

 ilecsys



Fans, Heating & Lighting



WHY ARE ENCLOSURE FANS USEFUL?

The protection of electrical components is paramount to the efficient and safe running of an enclosure or cabinet used to control systems and processes. The safest way to ensure the smooth running of equipment is to utilise a high quality cooling fan. The use of a fan will allow higher volumes of air to travel through the enclosure. Not only will it help with keeping your enclosure at a stable temperature but will also aid in the control and dissipation of condensation.

For advise on fan selection contact us for further information or email your enquiry to sales@ilecsys.co.uk

NEED HELP CHOOSING THE CORRECT AIR CONDITIONING UNIT?

IT ALL SEEMS A BIT CONFUSING!

WILL MY UNIT COME CHARGED WITH HFC GAS?

WHAT UNIT WILL BEST SUIT MY APPLICATION?

WHAT COOLING CAPACITY WILL I REQUIRE?

Choosing the correct air conditioning unit can sometimes be confusing. For help in selecting the correct unit for your application or if you have any technical questions.

Why not contact us on **01844 397300** or email us your enquiry to sales@ilecsys.co.uk

Ventilation

Air Vents
Air Vents & Draining Devices106

Fans, Filters & Guards
Axial Fans, Filters & Guards107
Filter Fans108-113



Air Conditioning

Air Conditioners
Cosmotec Surface Mount Conditioners . .114
Cosmotec Recessed Conditioners115



Heating

Panel Heaters
Stego HGK047/HG140116
Stego CSK/CS/CSF up to 400W117
Stego CR/CS up to 1000W118
Stego HVI up to 700W119
Stego CS030/130 up to 1200W120
StegoJet Fan121



Regulators

Thermostats
Stego Thermostats122

Hygrostat & Hygrotherm
Stego Hygrostat123
Stego Hygrotherm123



Lighting & DIN Rail Sockets

DIN Rail Sockets
Stego DIN Rail Sockets124

Panel Lighting
Stego KL025124
Stego LED025125



At iLECSYS we offer a comprehensive range of products designed to manage the pressure, humidity and temperature inside the enclosure.



DA 284 Pressure Compensation Device - IP66

Pressure differentials may occur in enclosures with a high degree of protection due to temperature variances inside and outside the enclosure. In some cases, a vacuum may form within the enclosure, increasing the risk of penetration of dust and humidity through the door seal. This simple device compensates for pressure differences and maintains a high degree of protection IP66. A semi-permeable membrane permits air and humidity to exit the enclosure whilst outside humidity and dust are blocked by the membrane.

It is recommended two devices are fitted on opposite sides of the enclosure toward the top. Available in Plastic or Stainless Steel.

REF NO	Description	PRICE
28400.0-01	Plastic - 60mm diameter x 37mm (40mm diameter cut out required) Air permeability 1200l/h at a pressure difference of minimum 70mbar	6.67
28401.0-00	Stainless Steel - 58mm diameter x 31mm (40mm diameter cut out required) Air permeability 1200l/h at a pressure difference of minimum 70mbar	86.94
28406.0-00	Plastic - 17mm diameter x 15.8mm (12mm diameter cut out required) Air permeability 120l/h at a pressure difference of minimum 70mbar	5.02/PK 2



Air Vents		
REF NO	Description	PRICE
NSYCAG19LP	Air Vent - 19mm Diameter cut-out - IP45	2.34/Pk 2
NSYCAG33LP	Air Vent - 33mm Diameter cut-out - IP44	15.50/Pk 2
NSYCAG35LP	Air Vent - 35mm Diameter cut-out IP30/IP44	4.78
MB10564-II	Air Vent - IP44	8.25



NSYCAG35LP

NSYCAG33LP



NSYCAG19LP

MB10564-II

DD 084 Condensate Draining Device - IP66/IP67/IP69K

Mounted at the lowest point, this device utilises capillary action to eliminate condensation from the enclosure whilst preventing splash water outside the enclosure from entering. Water flow-through - approximately 200ml/h at a water column of 5mm

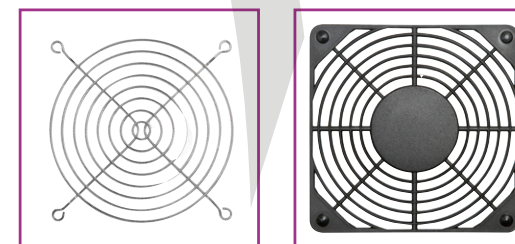
REF NO	Description	PRICE
08410.0-00	60mm diameter x 50mm (50mm diameter cut out required)	9.95

DA 084 Pressure Compensation Device - IP55

The DA 084 device allows a controlled change in pressure and prevents dust and water entering the enclosure according to IP55 provided it is mounted vertically. It is weatherproof and UV light resistant according to UL746C

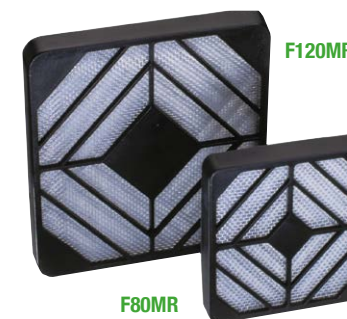
REF NO	Description	PRICE
08400.0-03	65mm diameter x 30.5mm (37mm diameter cut out required)	6.67

120mm x 120mm x 38mm Axial Fans		
REF NO	Description	PRICE
S128-2-HTS	Black die-cast aluminium frame with thermoplastic impeller - 230VAC Air volume - 156m³/hr Terminal connections	13.50
S128-1-HTS	As above but 110VAC	13.50
SD123824HB	Black plastic frame with thermoplastic impeller - 24VDC Air volume - 176m³/hr Wire connections	21.16
MGBMFG120	Metal finger guard	1.82
F120/MR	Plastic filter guard with filter mat & nylon mesh	7.02
G119P-2	Push-on, plastic moulded finger guard	5.27



MGBMFG120

G119P-2



F120MR

F80MR



S088-1-HWS

80mm x 80mm x 38mm Axial Fans		
REF NO	Description	PRICE
S088-2-HWS	Black die-cast aluminium frame with thermoplastic impeller - 230VAC Air volume - 41m³/hr Wire connections	11.90
S088-1-HWS	As above but 110VAC	12.04
SD802524HB	Black plastic frame with thermoplastic impeller - 24VDC Air volume - 65m³/hr Wire connections	14.36
MGBMFG80	Metal finger guard	1.82
F80/MR	Plastic filter guard with filter mat & nylon mesh	5.25
F80/MRC	EMC filter guard with filter mat wire mesh and EMC shield filter	11.96



S175-2-HWB

172mm x 150mm x 55mm Axial Fans		
REF NO	Description	PRICE
S175-2-HWB	Black die-cast aluminium frame with thermoplastic impeller - 230VAC 50/60Hz Air volume - 322m³/hr Wire connections, ball bearings	41.45
S175-1-HWB	As above but 110VAC	41.45
G172-10H	Metal finger guard	3.05

The RAL7035 guard and filter unit GRF25 (see following page) may also be used with the S175 fan

Fan Filter unit in RAL7035 to match in with standard enclosures. The housing is self-extinguishing ABS in accordance with UL94VO. Connection is with screw terminals and the protection rating is IP44.



GRV2500220

Type 1200 Filter Fans & Filter - RAL7035
130mmH x 130mmW x 65mmD

116mm x 116mm Panel Cut-out
External depth - 24mm; Internal depth - 41mm

REF NO	Description	PRICE
GRV1200220	Filter Fan unit - 230VAC - 43m ³ /h	64.29
GRV1200222	Filter Fan unit - 115VAC - 43m ³ /h	64.29
GRF12	Guard & Filter only	12.86
EMCFLT12	EMC Grille	25.86
AVAFAGSR12	Spare Filters (10)	15.71

Type 2500 Filter Fans & Filter - RAL7035
255mmH x 255mmW x 130mmD

226mm x 226mm Panel Cut-out
External depth - 40mm; Internal depth - 90mm

REF NO	Description	PRICE
GRV2500220	Filter Fan unit - 230VAC - 89m ³ /h	85.71
GRV2500222	Filter Fan unit - 115VAC - 89m ³ /h	85.71
GRF25	Guard & Filter only	27.14
EMCFLT25	EMC Grille	33.03
AVAFAGSR25	Spare Filters (10)	23.75

Type 2501 Filter Fans & Filter - RAL7035
255mmH x 255mmW x 130mmD

226mm x 226mm Panel Cut-out
External depth - 40mm; Internal depth - 100mm

REF NO	Description	PRICE
GRV2501220	Filter Fan unit - 230VAC - 200m ³ /h	117.14
GRV2501222	Filter Fan unit - 115VAC - 200m ³ /h	117.14
GRF25	Guard & Filter only	27.14
EMCFLT25	EMC Grille	33.03
AVAFAGSR25	Spare Filters (10)	23.75

Type 300A/300P Filter Fans & Filter - RAL7035
323mmH x 323mmW x 160mmD

294mm x 294mm Panel Cut-out
External depth - 40mm; Internal depth - 120mm

REF NO	Description	PRICE
GRV300A220	Filter Fan unit - 230VAC - 450m ³ /h - IN	200.00
GRV300A222	Filter Fan unit - 115VAC - 450m ³ /h - IN	200.00
GRV300P220	Filter Fan unit - 230VAC - 450m ³ /h - OUT	200.00
GRV300P222	Filter Fan unit - 115VAC - 450m ³ /h - OUT	200.00
GRF30	Guard & Filter only	38.57
EMCFLT30	EMC Grille	40.43
AVAFAGSR30	Spare Filters (10)	30.00

GUARDS & FILTERS



The fan part on the Type 1200 and Type 2500 can be reversed so that air can either be drawn from the enclosure or into the enclosure. The fan on Type 300 cannot be reversed. Select Type A to draw air into the enclosure and Type P to draw air from the enclosure.



GSV2000220

Kryos³ Filter Fans & Filter - RAL7035
119mmH x 119mmW x 57.5mmD

92mm x 92mm Panel Cut-out
External depth - 10.3mm; Internal depth - 47.2mm

REF NO	Description	PRICE
GSV1000220	Filter Fan unit - 230VAC - 35m ³ /h	57.14
GSV1000203	Filter Fan unit - 115VAC - 35m ³ /h	57.14
GSV1000211	Filter Fan unit - 24VDC - 50m ³ /h	68.57
GSF10	Outlet Filter	11.43

Kryos³ Filter Fans & Filter Fan - RAL7035
152mmH x 152mmW x 75mmD

125mm x 125mm Panel Cut-out
External depth - 10.3mm; Internal depth - 64.7mm

REF NO	Description	PRICE
GSV1500220	Filter Fan unit - 230VAC - 67m ³ /h	64.29
GSV1500203	Filter Fan unit - 115VAC - 67m ³ /h	64.29
GSV1500211	Filter Fan unit - 24VDC - 67m ³ /h	72.86
GSF15	Guard & Filter only	12.86

Kryos³ Filter Fans & Filter - RAL7035
204mmH x 204mmW x 98mmD

177mm x 177mm Panel Cut-out
External depth - 10.3mm; Internal depth - 87.7mm

REF NO	Description	PRICE
GSV2000220	Filter Fan unit - 230VAC - 108m ³ /h	72.86
GSV2000203	Filter Fan unit - 115VAC - 108m ³ /h	72.86
GSV2000211	Filter Fan unit - 24VDC - 108m ³ /h	88.57
GSF20	Outlet Filter	21.43

The Kryos³ Filter Fans can be mounted on enclosures with a thickness of 0.8mm to 3mm. The fans can be quickly adapted to change the air flow from push to pull on all models. They all offer IP54 protection.

Kryos³ Filter Fans & Filter - RAL7035
250mmH x 250mmW x 118mmD

223mm x 223mm Panel Cut-out
External depth - 10.3mm; Internal depth - 107.7mm

REF NO	Description	PRICE
GSV2500220	Filter Fan unit - 230VAC - 190m ³ /h	101.43
GSV2500203	Filter Fan unit - 115VAC - 190m ³ /h	101.43
GSV2500211	Filter Fan unit - 24VDC - 230m ³ /h	240.00
GSV2501220	Filter Fan unit - 230VAC - 270m ³ /h	142.86
GSV2501203	Filter Fan unit - 115VAC - 270m ³ /h	142.86
GSF25	Outlet Filter	27.14

Kryos³ Filter Fans & Filter - RAL7035
318mmH x 318mmW x 135mmD

291mm x 291mm Panel Cut-out
External depth - 10.3mm; Internal depth - 128.7mm

REF NO	Description	PRICE
GSV3000220	Filter Fan unit - 230VAC - 500m ³ /h	200.00
GSV3000203	Filter Fan unit - 115VAC - 500m ³ /h	200.00
GSV3001220	Filter Fan unit - 230VAC - 700m ³ /h	264.29
GSV3001203	Filter Fan unit - 115VAC - 700m ³ /h	264.29
GSF30	Outlet Filter	38.57

Kryos³ Filter Fans & Filter - RAL7035
318mmH x 318mmW x 160.5mmD

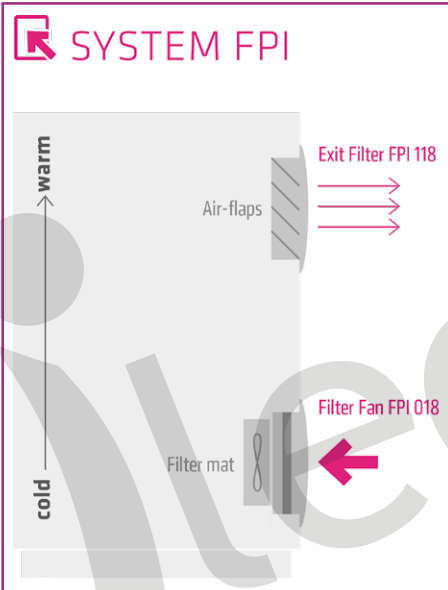
291mm x 291mm Panel Cut-out
External depth - 10.3mm; Internal depth - 150.2mm

REF NO	Description	PRICE
GSV3002220	Filter Fan unit - 230VAC - 850m ³ /h	321.43
GSV3002203	Filter Fan unit - 115VAC - 850m ³ /h	410.00
GSV3002262	Filter Fan unit - 230VAC - 850m ³ /h	391.43
GSF30	Outlet Filter	38.57

The fan part on Kryos³ fans is reversible to allow air to be drawn into or drawn out from the enclosure

The IP54 Filter Fan Plus series uses a new air-flap outlet technology for the air outlet which significantly increases the air flow within the enclosure. Depending on the application there are two systems available. A ratchet mechanism is used for fixing the fan to the enclosure which provides a highly stable and rapid installation catering for panel thickness from 1mm to 4mm.

1. The FPI system is a standard installation with a filter fan in the lower part of the enclosures ensuring fresh air is drawn into the enclosure. For this method a filter fan and exit filter are selected.
2. The FPO is a new system where the exit filter fan is located in the upper part of the enclosure drawing hot air out. An intake filter is situated at the bottom of the enclosure taking in cooler air.



Stego FPI-018 - 152mm x 152mm Fan - IP54

124mm x 124mm Panel Cut-out
External depth - 25mm; Internal depth - 66mm

REF NO	Description	PRICE
01871.0-30	Filter Fan unit - 230VAC; 19W; 52m³/h free flow; 42m³/h with filter mat	51.00
01871.9-30	Filter Fan unit - 115VAC; 18W; 62m³/h free flow; 51m³/h with filter mat	51.00
11871.0-00	Air-Flap Exit Filter FPI-118	18.50



Stego FPI-018 - 120mm x 120mm Fan - IP54

92mm x 92mm Panel Cut-out
External depth - 22mm; Internal depth - 66mm

REF NO	Description	PRICE
01870.0-30	Filter Fan unit - 230VAC; 12W; 19m³/h free flow; 13m³/h with filter mat	48.50
01870.9-30	Filter Fan unit - 115VAC; 12W; 23m³/h free flow; 16m³/h with filter mat	48.50
11870.0-00	Air-Flap Exit Filter FPI-118	16.30



Stego FPI-018 - 215mm x 215mm Fan - IP54

176mm x 176mm Panel Cut-out
External depth - 25mm; Internal depth - 117mm

REF NO	Description	PRICE
01872.0-30	Filter Fan unit - 230VAC; 45W; 170m³/h free flow; 139m³/h with filter mat	91.00
01872.9-30	Filter Fan unit - 115VAC; 38W; 204m³/h free flow; 187m³/h with filter mat	101.50
11872.0-00	Air-Flap Exit Filter FPI-118	25.30

Stego FPI-018 - 257mm x 257mm Fan - IP54

223mm x 223mm Panel Cut-out
External depth - 26mm; Internal depth - 147mm

REF NO	Description	PRICE
01873.0-30	Filter Fan unit - 230VAC; 64W; 305m³/h free flow; 272m³/h with filter mat	117.15
01873.9-30	Filter Fan unit - 115VAC; 81W; 332m³/h free flow; 293m³/h with filter mat	122.30
11873.0-00	Air-Flap Exit Filter FPI-118	33.30



Stego FPI-018 - 322mm x 322mm Fan - IP54

291mm x 291mm Panel Cut-out
External depth - 29mm; Internal depth - 160mm

REF NO	Description	PRICE
01874.0-30	Filter Fan unit - 230VAC; 95W; 433m³/h free flow; 373m³/h with filter mat	158.15
01874.9-30	Filter Fan unit - 115VAC; 90W; 394m³/h free flow; 339m³/h with filter mat	171.65
11874.0-00	Air-Flap Exit Filter FPI-118	50.65



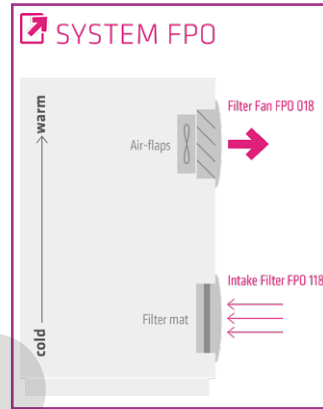
Normally Open Thermostats for Fans

REF NO	Description	PRICE
01141.0-00	KTS1141 Normally Open Thermostat Temperature Range 0 - 60°C	11.26
01143.0-00	KTS1143 Normally Open Thermostat Temperature Range -10 to +50°C	13.02
01116.0-00	STS11 Normally Open Thermostat Thumb wheel Operation, Small Hysteresis, High Switching Capacity, Temperature Range 0 - 60°C	14.68
01161.0-00	FTS011 Normally Open Preset Thermostat Switches on at 50°C and off at 40°C	7.07
01161.0-01	FTS011 Normally Open Preset Thermostat Switches on at 60°C and off at 50°C	7.07
01161.0-02	FTS011 Normally Open Preset Thermostat Switches on at 35°C and off at 25°C	7.07
01172.0-00	ZR011 Dual Thermostat Normally Open/ Normally Closed Temperature Range 0 - 60°C	16.85
01175.0-00	ZR011 Dual Thermostat Normally Open/ Normally Closed Temperature Range -10 to +50°C on NC 20 to +80°C on NO	18.44



The Stego FPO is a new system where the exit filter fan is located in the upper part of the enclosure drawing hot air out. An intake filter is situated at the bottom of the enclosure taking in cooler air.

The ClimaSys fans comprise of an axial motor, protective housing and a filter designed to retain dust particles. The filter can be replaced during operation without the risk of contact with the fan.



01883.0-00

01880.0-00

Stego FPO 018 - 257mm x 257mm Fan - IP54

223mm x 223mm Panel Cut-out
External depth - 26mm; Internal depth - 147mm

REF NO	Description	PRICE
01883.0-00	Filter Fan unit with Fan Flaps - 230VAC; 64W; 305m³/h free flow; 272m³/h with exit filter	125.40
01883.9-00	Filter Fan unit with Fan Flaps - 115VAC; 81W; 332m³/h free flow; 293m³/h with exit filter	135.00
11883.0-30	In-take Filter Grill with mat FPO-118	24.00

Stego FPO 018 - 322mm x 322mm Fan - IP54

291mm x 291mm Panel Cut-out
External depth - 29mm; Internal depth - 160mm

REF NO	Description	PRICE
01884.0-00	Filter Fan unit with Fan Flaps - 230VAC; 95W; 727m³/h free flow; 413m³/h with exit filter	166.60
01884.9-00	Filter Fan unit with Fan Flaps - 115VAC; 90W; 703m³/h free flow; 391m³/h with exit filter	180.00
11884.0-30	In-take Filter Grill with mat FPO-118	39.20



Stego FPO 018 - 120mm x 120mm Fan - IP54

92mm x 92mm Panel Cut-out
External depth - 22mm; Internal depth - 72mm

REF NO	Description	PRICE
01880.0-00	Filter Fan unit with Fan Flaps - 230VAC; 12W; 24m³/h free flow; 15m³/h with exit filter	50.65
01880.9-00	Filter Fan unit with Fan Flaps - 115VAC; 12W; 32m³/h free flow; 19m³/h with exit filter	50.65
11880.0-30	In-take Filter Grill with mat FPO-118	14.50

Stego FPO 018 - 152mm x 152mm Fan - IP54

124mm x 124mm Panel Cut-out
External depth - 25mm; Internal depth - 75mm

REF NO	Description	PRICE
01881.0-00	Filter Fan unit with Fan Flaps - 230VAC; 19W; 97m³/h free flow; 47m³/h with exit filter	53.15
01881.9-00	Filter Fan unit with Fan Flaps - 115VAC; 18W; 117m³/h free flow; 58m³/h with exit filter	53.15
11881.0-30	In-take Filter Grill with mat FPO-118	16.50

Stego FPO 018 - 215mm x 215mm Fan - IP54

176mm x 176mm Panel Cut-out
External depth - 25mm; Internal depth - 117mm

REF NO	Description	PRICE
01882.0-00	Filter Fan unit with Fan Flaps - 230VAC; 45W; 263m³/h free flow; 137m³/h with exit filter	95.90
01882.9-00	Filter Fan unit with Fan Flaps - 115VAC; 38W; 313m³/h free flow; 166m³/h with exit filter	106.25
11882.0-30	In-take Filter Grill with mat FPO-118	19.40



NSYCVF38M230PF

ClimaSys Filter Fans & Filter - RAL7035 137mm High x 117mm Wide - IP54

92mm x 92mm Panel Cut-out
External depth - 13mm; Internal depth - 49mm

REF NO	Description	PRICE
NSYCVF38M24DPF	Filter Fan unit - 24VDC - 58m³/hr	116.79
NSYCVF38M230PF	Filter Fan unit - 230VAC - 38m³/hr	80.25
NSYCVF38M115PF	Filter Fan unit - 115VAC - 38m³/hr	91.27
NSYCAG92LPF	Outlet Filter	18.42



NSYCVF85M24DPF

ClimaSys Filter Fans & Filter - RAL7035 170mm High x 150mm Wide - IP54

125mm x 125mm Panel Cut-out
External depth - 15mm; Internal depth - 62mm

REF NO	Description	PRICE
NSYCVF85M24DPF	Filter Fan unit - 24VDC - 80m³/hr	158.80
NSYCVF85M230PF	Filter Fan unit - 230VAC - 85m³/hr	95.46
NSYCVF85M115PF	Filter Fan unit - 115VAC - 79m³/hr	111.13
NSYCAG125LPF	Outlet Filter	24.24



NSYCVF165M230PF

ClimaSys Filter Fans & Filter - RAL7035 268mm High x 248mm Wide - IP54

223mm x 223mm Panel Cut-out
External depth - 18mm; Internal depth - 104mm

REF NO	Description	PRICE
NSYCVF165M24DPF	Filter Fan unit - 24VDC - 190m³/hr	275.19
NSYCVF165M230PF	Filter Fan unit - 230VAC - 165m³/hr	103.02
NSYCVF165M115PF	Filter Fan unit - 115VAC - 165m³/hr	132.42
NSYCAG223LPF	Outlet Filter	27.50



NSYCVF560M230PF

ClimaSys Filter Fans & Filter - RAL7035 336mm High x 316mm Wide - IP54

291mm x 291mm Panel Cut-out
External depth - 18mm; Internal depth - 160.5mm

REF NO	Description	PRICE
NSYCVF560M230PF	Filter Fan unit - 230VAC - 562m³/hr	155.89
NSYCVF560M115PF	Filter Fan unit - 115VAC - 562m³/hr	198.58
NSYCVF850M230PF	Filter Fan unit - 230VAC - 931m³/hr	197.25
NSYCVF850M115PF	Filter Fan unit - 115VAC - 931m³/hr	215.35
NSYCAG291LPF	Outlet Filter	31.94



The Protherm surface mount and semi-recessed air conditioning units have been designed for indoor use. All Protherm A/C units come charged with Tetrafluoroethane (HFC) gas.



CVE Surface Mounted Indoor Air Conditioning Units

REF NO	Description	PRICE
CVE03002200000	230VAC - 1Ph - 50/60Hz Cooling Capacity: 360-380W L35/L35 443mmH x 324mmW x 206mmD	1348.57
CVE03U12030000	110VAC - 1Ph - 60Hz UL Approved Cooling Capacity: 380W L35/L35 443mmH x 324mmW x 206mmD	1487.14
CVE05002208000	230VAC - 1Ph - 50/60Hz Cooling Capacity: 550-580W L35/L35 642mmH x 314.5mmW x 223mmD	1380.00
CVE05U12038000	110VAC - 1Ph - 60Hz UL Approved Cooling Capacity: 580W L35/L35 642mmH x 314.5mmW x 223mmD	1480.00
CVE08002208000	230VAC - 1Ph - 50/60Hz Cooling Capacity: 850-900W L35/L35 642mmH x 314.5mmW x 223mmD	1487.14
CVE08U12038000	110VAC - 1Ph - 60Hz UL Approved Cooling Capacity: 900W L35/L35 642mmH x 314.5mmW x 223mmD	1580.00
CVE11002208000	230VAC - 1Ph - 50/60Hz Cooling Capacity: 1100-1150W L35/L35 913mmH x 413mmW x 248mmD	1885.71
CVE11U12038000	110VAC - 1Ph - 60Hz UL Approved Cooling Capacity: 1150W L35/L35 913mmH x 413mmW x 248mmD	2137.14

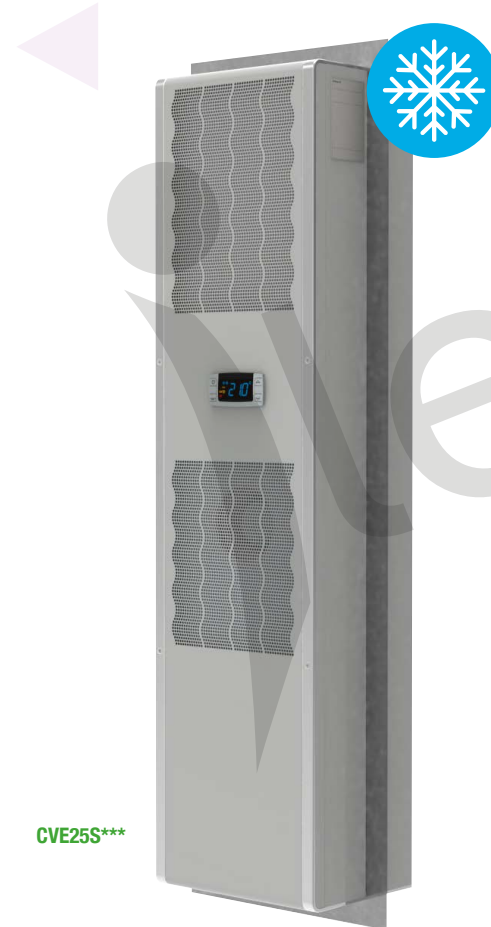
Cooling Capacity is a measure of the air conditioner's ability to remove heat. The L35/L35 figure quoted is an industry benchmark (EN14511-2) where the first L35 is the temperature of the enclosure 35°C and the second L35 is the ambient temperature. The cooling capacity will vary when the desired temperature and ambient temperature vary.

REF NO	Description	PRICE
CVE15002208000	230VAC - 1Ph - 50/60Hz Cooling Capacity: 1500-1600W L35/L35 913mmH x 413mmW x 248mmD	2031.43
CVE15U12038000	110VAC - 1Ph - 60Hz UL Approved Cooling Capacity: 1600W L35/L35 913mmH x 413mmW x 248mmD	2337.14
CVE20002208000	230VAC - 1Ph - 50/60Hz Cooling Capacity: 2100-2200W L35/L35 1005mmH x 413mmW x 263mmD	2428.57
CVE20U12038000	110VAC - 1Ph - 60Hz UL Approved Cooling Capacity: 2200W L35/L35 1005mmH x 413mmW x 263mmD	2985.71



REF NO	Description	PRICE
CVE30002208000	230VAC - 1Ph - 50/60Hz Cooling Capacity: 2100-2200W L35/L35 1219mmH x 514mmW x 347.5mmD	3262.80
CVE40002208000	230VAC - 1Ph - 50/60Hz Cooling Capacity: 4000-4100W L35/L35 1219mmH x 514mmW x 347.5mmD	3415.71
CVE40002618000	400VAC/50Hz; 460VAC/60Hz - 3Ph Cooling Capacity: 3950-4050W L35/L35 1219mmH x 514mmW x 347.5mmD	3921.43
CVE60002618000	400VAC/50Hz; 460VAC/60Hz - 3Ph Cooling Capacity: 5600-5950W L35/L35 1219mmH x 514mmW x 347.5mmD	5605.71

REF NO	Description	PRICE
CVE0700S208000	230VAC - 1Ph - 50/60Hz Cooling Capacity: 800-850W L35/L35 550mmH x 279mmW x 286mmD	2695.71
CVE1500S208000	230VAC - 1Ph - 50/60Hz Cooling Capacity: 1500-1600W L35/L35 950mmH x 400mmW x 304mmD	2880.00
CVE2500S208000	230VAC - 1Ph - 50/60Hz Cooling Capacity: 2550-2750W L35/L35 1580mmH x 400mmW x 305mmD	4135.71



CVE25S***

Also Available
Top Mounted Air Conditioning Units
Air Conditioning Units for Outdoor Use
Please contact us for details

The SLIM-IN have been designed for total recessed mounting. The units come complete with digital thermostat ECB, integrated filter and general alarm contacts and remote control as standard. All Protherm A/C Units come charged with Tetrafluoroethane (HFC) gas.



REF NO	Description	PRICE
EVE05A32207000	230VAC - 1Ph - 50/60Hz Cooling Capacity: 550-550W L35/L35 957mmH x 315mmW x 212mmD	1580.00
EVE05U32037000	115VAC - 1Ph - 60Hz UL Approved Cooling Capacity: 550W L35/L35 957mmH x 375mmW x 212mmD	2210.00
EVE10A32207000	230VAC - 1Ph - 50/60Hz Cooling Capacity: 1000-1150W L35/L35 957mmH x 315mmW x 212mmD	1658.57
EVE10U32037000	115VAC - 1Ph - 60Hz UL Approved Cooling Capacity: 1150W L35/L35 957mmH x 375mmW x 212mmD	2492.86
EVE14A32207000	230VAC - 1Ph - 50/60Hz Cooling Capacity: 1400-1500W L35/L35 1665mmH x 454mmW x 197mmD	2443.71
EVE14U32037000	115VAC - 1Ph - 60Hz UL Approved Cooling Capacity: 1500W L35/L35 1665mmH x 454mmW x 197mmD	3394.29
EVE20A32207000	230VAC - 1Ph - 50/60Hz Cooling Capacity: 2000-2200W L35/L35 1665mmH x 454mmW x 197mmD	2730.00
EVE20U32037000	115VAC - 1Ph - 60Hz UL Approved Cooling Capacity: 2200W L35/L35 1665mmH x 454mmW x 197mmD	3628.87
EVE30A32207000	230VAC - 1Ph - 50/60Hz Cooling Capacity: 3000-3200W L35/L35 1665mmH x 454mmW x 197mmD	3628.57
EVE30A32617000	400VAC/50Hz; 460VAC/60Hz - 3Ph Cooling Capacity: 3000-3200W L35/L35 1665mmH x 496mmW x 237mmD	4024.29

Stego are renowned, worldwide for the "heating, cooling, temperature and humidity control" of electronic enclosures.

Due to fluctuating temperatures condensation can form in enclosures. This can lead to serious malfunctions or, worst case, to component failure. Convection heaters protect against low temperatures, thus preventing the formation of condensation. Furthermore fan heaters provide air circulation and ensure constant temperatures in enclosures.

The heaters incorporate PTC (Positive Temperature Coefficient) semiconductor technology, which reduces heating power (W) with increasing ambient temperature.

HGK 047 Series 10-30W

The HGK 047 heater has a PTC element which means that the output of the heater will vary according to the ambient temperature. The heater is supplied with a 500mm lead and is suitable for mounting on DIN Rail.

REF NO	Heating Capacity at 20°C	Dimensions (mm) W x H x D	PRICE
120-240V AC/DC			
04700.0-00	10W	25 x 52 x 50	17.29
04701.0-00	20W	25 x 60 x 50	19.71
04702.0-00	30W	25 x 70 x 50	20.91
110-120V AC/DC			
04700.9-00	10W	25 x 52 x 50	19.01
04701.9-00	20W	25 x 70 x 50	21.68
04702.9-00	30W	25 x 100 x 50	23.01



04702.0-00

HG 140 Series - Semiconductor - 15 - 150W

The HG 140 heater is suitable for mounting on DIN Rail. The aluminium profile heater body design has a chimney effect and distributes the heat evenly. Pressure clamp connectors save time and simplify installation. VDE + UL FILE NO. E150057

REF NO	Heating Capacity at 20°C	Dimensions (mm) W x H x D	PRICE
120-240V AC/DC			
14000.0-00	15W	70 x 104 x 60	25.55
14001.0-00	30W	70 x 140 x 60	26.16
14003.0-00	45W	70 x 140 x 60	26.16
14005.0-00	60W	70 x 179 x 60	33.47
14006.0-00	75W	70 x 179 x 60	39.31
14007.0-00	100W	70 x 179 x 60	40.23
14008.0-00	150W	70 x 259 x 60	51.82



14007.0-00

Normally Closed Thermostats for Heaters

REF NO	Description	PRICE
01140.0-00	KTO1140 Normally Closed Thermostat Temperature Range 0 - 60°C	11.26
01142.0-00	KTO1142 Normally Closed Thermostat Temperature Range -10 to +50°C	13.02
01115.0-00	ST011 Normally Closed Thermostat Thumbwheel Operation, Small Hysteresis, High Switching Capacity, Anti frost Setting. Temperature Range 0 - 60°C	14.68
01160.0-00	FTO011 Normally Closed Preset Thermostat Switches on at 5°C and off at 15°C	7.07
01160.0-01	FTO011 Normally Closed Preset Thermostat Switches on at 15°C and off at 25°C	7.07
01172.0-00	ZR011 Dual Thermostat Normally Open/ Normally Closed Temperature Range 0 - 60°C	16.85
01175.0-00	ZR011 Dual Thermostat Normally Open/ Normally Closed Temperature Range -10 to +50°C on NC 20 to +80°C on NO	18.44

CSK 060 Series - Touch Safe - 10 - 20W

The CSK 060 has a low surface temperature. It conforms to Class II with its double insulated plastic casing. Suitable for mounting on DIN Rail. VDE + UL File No. E150057

REF NO	Heating Capacity at 20°C	Dimensions (mm) W x H x D	PRICE
120-240V AC/DC			
06040.0-00	10W	38 x 98 x 75	16.88
06030.0-00	20W	38 x 98 x 75	17.51



06030.0-00

CS 060 Series - Touch Safe - 50 - 150W

The CS 060 has a low surface temperature. It conforms to Class II with its double insulated plastic casing. Suitable for mounting on DIN Rail. VDE + UL File No. E150057

REF NO	Heating Capacity at 20°C	Dimensions (mm) W x H x D	PRICE
120-240V AC/DC			
06000.0-00	50W	60 x 110 x 90	30.10
06010.0-00	100W	60 x 110 x 90	43.49
06020.0-00	150W	60 x 150 x 90	49.99



06000.0-00

CSF 060 Series - Semiconductor - 50-150W Integrated Thermostat

The CSF 060 has a low surface temperature. It conforms to Class II with its double insulated plastic casing. Suitable for mounting on DIN Rail. The CSF 060 has an in built preset thermostat. VDE + UL File No. E150057

REF NO	Heating Capacity at 20°C	Switch On/Off Temp °C	Dimensions (mm) W x H x D	PRICE
120-240V AC/DC				
06001.0-00	50W	5/15	60 x 133 x 90	35.56
06002.0-00	50W	15/25	60 x 133 x 90	35.56
06011.0-00	100W	5/15	60 x 133 x 90	48.94
06012.0-00	100W	15/25	60 x 133 x 90	48.94
06021.0-00	150W	5/15	60 x 173 x 90	62.40
06022.0-00	150W	15/25	60 x 173 x 90	62.40



02810**

CS 028/CSL 028 Series Semiconductor Fan Heater 150 - 400W

The CS 028/CLS 028 conforms to Class II with its double insulated plastic casing. Versions for either DIN Rail mounting or Screw Fixing. UL File No. E150057. VDE on 230V Models

REF NO	Heating Capacity at 20°C	Mounting Option	Dimensions (mm) W x H x D	PRICE
120V AC				
02800.9-00	150W	DIN Rail	75 x 65 x 90	60.49
02811.9-00	250W	DIN Rail	90 x 85 x 111	71.24
02810.9-00	400W	DIN Rail	90 x 85 x 111	78.66
02800.9-01	150W	Screw	75 x 65 x 90	60.49
02811.9-01	250W	Screw	90 x 85 x 111	71.24
02810.9-01	400W	Screw	90 x 85 x 111	78.66
240VAC				
02800.0-00	150W	DIN Rail	75 x 65 x 90	60.49
02811.0-00	250W	DIN Rail	90 x 85 x 111	71.24
02810.0-00	400W	DIN Rail	90 x 85 x 111	78.66
02800.0-01	150W	Screw	75 x 65 x 90	60.49
02811.0-01	250W	Screw	90 x 85 x 111	71.24
02810.0-01	400W	Screw	90 x 85 x 111	78.66



The CSF028 range includes a 250W and 400W version with in-built thermostat. For full details of this product please visit our website, www.ilecsys.co.uk

CR 030 Fan Heater - 950W - Integrated Thermostat or Hygrostat - 168m³/Hour

This compact high performance fan heater prevents formation of condensation and frost and provides an evenly distributed interior air temperature in enclosures with electric / electronic components. The plastic housing provides double insulation and acts as protection against contact. The fan heater is available with integrated thermostat or preset hygrostat for temperature or humidity control. The CR 030 is designed as a stand alone unit for the bottom of the enclosure. For screw fixing the fan heater CR 130 is recommended.

VDE + UL File No. E234324

REF NO	Heating Capacity at 20°C	Dimensions (mm) W x H x D	PRICE
230V AC			
03051.0-00	950W with Thermostat Temp Range 0 - 60°C	145 x 100 x 168	128.95
03051.0-02	950W with Hygrostat 65% RH, factory-set	145 x 100 x 168	184.22
120V AC			
03059.9-00	950W with Thermostat Temp Range 0 - 60°C	145 x 100 x 168	128.95



WITHOUT THERMOSTAT



WITH THERMOSTAT

CS 032/CSF 032 Fan Heater - 1000W - With or Without Built Thermostat - 63m³/Hour

The CS 032/CSF 032 Fan Heater has a compact and slim design and weighs only 0.5kg. Mounting is by screw fixing (M5) or onto 35mm DIN Rail.

VDE + UL File No. E234324

REF NO	Heating Capacity at 20°C	Dimensions (mm) W x H x D	PRICE
230V AC for DIN Rail			
03209.0-00	1000W	66 x 88 x 153	150.38
03201.0-00	1000W with Thermostat Switches off at 25°C Switches on at 15°C	66 x 88 x 153	161.52
03202.0-00	1000W with Thermostat Switches off at 15°C Switches on at 5°C	66 x 88 x 153	161.52
120V AC for DIN Rail			
03209.9-00	1000W	66 x 88 x 153	150.38
03201.9-00	1000W with Thermostat Switches off at 25°C Switches on at 15°C	66 x 88 x 153	161.52
03202.9-00	1000W with Thermostat Switches off at 15°C Switches on at 5°C	66 x 88 x 153	161.52
230V AC for Screw Mount			
03209.0-01	1000W	66 x 120 x 153	150.38
03201.0-01	1000W with Thermostat Switches off at 25°C Switches on at 15°C	66 x 120 x 153	161.52
03202.0-01	1000W with Thermostat Switches off at 15°C Switches on at 5°C	66 x 120 x 153	161.52
120V AC for Screw Mount			
03209.9-01	1000W	66 x 120 x 153	150.38
03201.9-01	1000W with Thermostat Switches off at 25°C Switches on at 15°C	66 x 120 x 153	161.52
03202.9-01	1000W with Thermostat Switches off at 15°C Switches on at 5°C	66 x 120 x 153	161.52

HVI 030 Space Saving Heater with Fan - 500 - 700W 150m³/Hour

This latest space-saving high-performance heater from Stego prevents formation of condensation and frost and provides an evenly distributed interior air temperature in enclosures with electric / electronic components. The fan-heaters are available with two different mounting options; screw fixing or with a new and unique twist clip mounting option. Both allow for quick and easy installation of the heater. VDE, UL Submitted.

REF NO	Heating Capacity at 20°C	Dimensions (mm) W x H x D	PRICE
230V AC for DIN Rail			
03084.0-00	500W Fan Heater	127 x 89 x 169	132.61
03083.0-00	600W Fan Heater	127 x 89 x 169	137.91
03082.0-00	700W Fan Heater	127 x 89 x 169	148.52
120V AC for DIN Rail			
03084.9-00	500W Fan Heater	127 x 89 x 169	132.61
03083.9-00	600W Fan Heater	127 x 89 x 169	137.91
03082.9-00	700W Fan Heater	127 x 89 x 169	148.52



03084.0-00

REF NO	Heating Capacity at 20°C	Dimensions (mm) W x H x D	PRICE
230V AC for Screw Fixing			
03084.0-01	500W Fan Heater	127 x 89 x 169	132.61
03083.0-01	600W Fan Heater	127 x 89 x 169	137.91
03082.0-01	700W Fan Heater	127 x 89 x 169	148.52
120V AC for Screw Fixing			
03084.9-01	500W Fan Heater	127 x 89 x 169	132.61
03083.9-01	600W Fan Heater	127 x 89 x 169	137.91
03082.9-01	700W Fan Heater	127 x 89 x 169	148.52



03084.0-01



01160.0-00



01140.0-00

Normally Closed Thermostats for Heaters

REF NO	Description	PRICE
01140.0-00	KTO1140 Normally Closed Thermostat Temperature Range 0 - 60°C	11.26
01142.0-00	KTO1142 Normally Closed Thermostat Temperature Range -10 to +50°C	13.02
01115.0-00	ST011 Normally Closed Thermostat Thumb wheel Operation, Small Hysteresis, High Switching Capacity, Anti-frost Setting. Temperature Range 0 - 60°C	14.68
01160.0-00	FTO011 Normally Closed Preset Thermostat Switches on at 5°C and off at 15°C	7.07
01160.0-01	FTO011 Normally Closed Preset Thermostat Switches on at 15°C and off at 25°C	7.07
01172.0-00	ZR011 Dual Thermostat Normally Open/ Normally Closed Temperature Range 0 - 60°C	16.85
01175.0-00	ZR011 Dual Thermostat Normally Open/ Normally Closed Temperature Range -10 to +50°C on NC 20 to +80°C on NO	18.44

01172.0-00



01115.0-00

CS 030 Fan Heater - 1200W - With or Without Integrated Thermostat - 160m³/Hour

This compact high performance fan heater is the big brother of the CR 030. The CS 030 is designed as a stand alone unit for the bottom of the enclosure. The plastic housing provides double insulation and acts as protection against contact. For screw fixing the fan heater CS 130 is recommended.

VDE + UL File No. E150057³

REF NO	Heating Capacity at 20°C	Dimensions (mm) W x H x D	PRICE
230V AC			
03060.0-00	1200W with Thermostat Temp Range 0 - 60°C	145 x 120 x 168	165.80
03060.0-01	1200W	145 x 120 x 168	147.38



03060.0-00

CS 130 Fan Heater - 1200W - With or Without Integrated Thermostat - 160m³/Hour

The CS 130 is identical in specification to the CS 030. However, this unit can mount of 35mm DIN rail or can screw fix (M6)

REF NO	Heating Capacity at 20°C	Dimensions (mm) W x H x D	PRICE
230V AC			
13060.0-00	1200W with Thermostat Temp Range 0 - 60°C	145 x 120 x 168	165.80
13060.0-01	1200W	145 x 120 x 168	147.38



13060.0-00



01160.0-00



01140.0-00

Normally Closed Thermostats for Heaters

REF NO	Description	PRICE
01140.0-00	KTO1140 Normally Closed Thermostat Temperature Range 0 - 60°C	11.26
01142.0-00	KTO1142 Normally Closed Thermostat Temperature Range -10 to +50°C	13.02
01115.0-00	ST011 Normally Closed Thermostat Thumbwheel Operation, Small Hysteresis, High Switching Capacity, Anti-frost Setting. Temperature Range 0 - 60°C	14.68
01160.0-00	FTO011 Normally Closed Preset Thermostat Switches on at 5°C and off at 15°C	7.07
01160.0-01	FTO011 Normally Closed Preset Thermostat Switches on at 15°C and off at 25°C	7.07
01172.0-00	ZR011 Dual Thermostat Normally Open/Normally Closed Temperature Range 0 - 60°C	16.85
01175.0-00	ZR011 Dual Thermostat Normally Open/Normally Closed Temperature Range -10 to +50°C on NC 20 to +80°C on NO	18.44

01172.0-00



01115.0-00



DS 013 Door Switch

The door switch monitors the position of enclosure doors and is available in 3 versions. It can be used for switching a light on when opening a door (NC) or to activate a fan when closing a door (NO). The version with a changeover contact (CO) can be used as a normally closed and/or normally open contact. The wide mechanical adjustment range of the door switch offers versatile use. The housing is adjustable within a 35mm range and the screw flange, with a slotted hole, offers an additional 21mm. The switching travel of the switch itself is another 8mm



REF NO	Type	Dimensions (mm)	PRICE
Maximum Switching Capacity - 250V, 10A			
01350.0-00	Door Switch with Changeover Contact	87 x 64 x 30	22.25
01351.0-00	Door Switch with Normally Closed Contact	87 x 64 x 30	22.25
01352.0-00	Door Switch with Normally Open Contact	87 x 64 x 30	22.25

SJ019 StegoJet

The StegoJet is a compact, powerful fan. It allows precise cooling of heat sources with the air flow preventing formation of heat pockets. It's design offers a maximum rotation range with an air output in almost any direction. The dual clip system allows four different positions on a DIN rail and the hinge in the housing can be moved in a 40 Degree angle. The air flow at the air outlet can also be directed in a 45 Degree angle and the air duct can be turned 360 Degrees.

IP20/II Double Insulated



01925.0-00

REF NO	Type	Dimensions (mm)	PRICE
100-240VAC 50/60Hz			
01925.0-00	StegoJet - Clip Fixing	132 x 75 x 60	65.00
01925.0-01	StegoJet - Screw Fixing	132 x 75 x 60	65.00

The compact Smart Sensor CSS 014 offers a 'plug and play' product for monitoring installations, including remote monitoring, which allows an immediate response to unwanted changes. The sensor electronically records temperature and humidity and converts the measured data into a standardized analog 4 to 20 mA signal. The converted value signals can be utilized or further processed by a control or monitoring unit, e.g. a PLC controller. The control unit interprets the signal and initiates appropriate measures.



01400.2-00

CSS 014 Smart Sensor

Temperature Range:	-40 to +60 °C (-40 to +140 °F) ±1K tolerance
Humidity Range:	0 to 100 % RH ±4% tolerance
Max. Power Consumption:	1.8 W (typically 0.4 W)
Connection:	IEC M12 round plug connector, Clip for 35 mm DIN rail and M5 screw fixing
Mounting:	Light Grey Plastic to UL94 V-0, 140 x 40 x 38 mm
Casing:	Weight: Approx. 50 g
Dimensions:	Voltage DC 24V (DC 12 – 30 V)
Weight:	Ingress Protection: IP20
Voltage:	Approvals: VDE and UL File No. E500143 (acc. to IEC 61010-1/ DIN EN 61010-1)
Ingress Protection:	
Approvals:	

REF NO	Description	PRICE
01400.2-00	Smart Sensor CSS 014	125.00

KTO 011 Thermostat - Normally Closed

Normally Closed Thermostat
Dimensions: 60mmH x 33mmW x 43mmD
Switching Capacity 10 (2) A at 250VAC

REF NO	Description	PRICE
01140.0-00	KTO1140 Normally Closed Thermostat Temperature Range 0 to +60°C VDE Approved	11.26
01142.0-00	KTO1142 Normally Closed Thermostat Temperature Range -10 to +50°C VDE + UL Approved E164102	13.02
01159.0-00	KTO1159 Normally Closed Thermostat Temperature Range +20 to +80°C VDE + UL Approved E164102	13.02
01146.9-00	KTO1146 Normally Closed Thermostat Temperature Range 0 to +60°C VDE + UL Approved E164102	13.02



KTS 011 Thermostat - Normally Open

Normally Open Thermostat
Dimensions: 60mmH x 33mmW x 43mmD
Switching Capacity 10 (2) A at 250VAC

REF NO	Description	PRICE
01141.0-00	KTS1141 Normally Open Thermostat Temperature Range 0 to +60°C VDE Approved	11.26
01143.0-00	KTS1142 Normally Open Thermostat Temperature Range -10 to +50°C VDE + UL Approved E164102	13.02
01158.0-00	KTS1158 Normally Open Thermostat Temperature Range +20 to +80°C VDE + UL Approved E164102	13.02
01147.9-00	KTS1147 Normally Open Thermostat Temperature Range 0 to +60°C VDE + UL Approved E164102	13.02

All mechanical thermostats have a thermostatic bimetal sensor element and snap action contacts. Normally Closed devices have a Red dial and are used for regulating heaters. Normally Open devices have a Blue dial and are used for regulating fans or heat exchangers or for switching signal devices where the temperature limit has been exceeded.

All units mount onto TS35 DIN Rail

STO 011 Thermostat - Normally Closed

This mechanical thermostat with a Normally Closed Contact is a two state regulator with small hysteresis.
Dimensions: 70mmH x 33mmW x 42mmD
Switching Capacity 10 (2) A at 250VAC

REF NO	Description	PRICE
01115.0-00	STO1115 Normally Closed Thermostat Temperature Range 0 to +60°C. VDE Approved	14.68



STS 011 Thermostat - Normally Open

This mechanical thermostat with a Normally Open Contact is a two state regulator with small hysteresis.
Dimensions: 70mmH x 33mmW x 42mmD
Switching Capacity 10 (2) A at 250VAC

REF NO	Description	PRICE
01116.0-00	STS1116 Normally Open Thermostat Temperature Range 0 to +60°C. VDE Approved	14.65

ZR 011 Dual Thermostat

The ZR 011 has Normally Open and Normally Closed contacts in one casing with separate adjustable temperatures (01176.0-00 has 2 x Normally Open Contacts)
Dimensions: 67mmH x 50mmW x 46mmD
Switching Capacity 10 (2) A at 250VAC

REF NO	Description	PRICE
01172.0-00	ZR011 Dual Thermostat Normally Open/Normally Closed Temperature Range 0 to 60°C	16.85
01175.0-00	ZR011 Dual Thermostat Normally Open/Normally Closed Temperature Range -10 to +50°C on NC 20 to +80°C on NO	18.44
01176.0-00	ZR011 Dual Thermostat 2 x Normally Open Contacts Temperature Range 0 to 60°C	18.44



FTO 011 Tamper-Proof (Pre-Set) Thermostat - Normally Closed

Normally Closed Thermostat
Dimensions: 47mmH x 33mmW x 33mmD
Switching Capacity 5 (1.6) A at 250VAC

REF NO	Description	PRICE
01160.0-00	FTO 011 Normally Closed Preset Thermostat Switches on at 5°C and off at 15°C	7.07
01160.0-01	FTO 011 Normally Closed Preset Thermostat Switches on at 15°C and off at 25°C	7.07



FTS 011 Tamper-Proof (Pre-Set) Thermostat Normally Open

Normally Open Thermostat
Dimensions: 47mmH x 33mmW x 33mmD
Switching Capacity 5 (1.6) A at 250VAC

REF NO	Description	PRICE
01161.0-00	FTS 011 Normally Open Preset Thermostat Switches on at 50°C and off at 40°C	7.07
01161.0-01	FTS 011 Normally Open Preset Thermostat Switches on at 60°C and off at 50°C	7.07
01161.0-02	FTS 011 Normally Open Preset Thermostat Switches on at 35°C and off at 25°C	7.07

ETR 011 Electronic Thermostat

The electronic thermostat which has a small hysteresis is used for controlling heating and cooling equipment. The thermostat registers the surrounding air and can switch both inductive and resistive loads via a relay with changeover contacts
Dimensions: 64.5mmH x 42mmW x 38mmD
Switching Capacity 8 (1.6) A at 250VAC

REF NO	Description	PRICE
01131.0-00	ETR 011 Electronic Thermostat with changeover contact. Temperature Range -20 to 60°C	38.04



EFR 011 Electronic Hygrostat

The electronic hygrostat senses the relative humidity in an enclosure and turns on a heater at the set point, which will help to prevent condensation forming. The LED integrated in the adjustment knob is lit when the connected heater is in operation.
Dimensions: 64.5mmH x 42mmW x 38mmD
Switching Capacity 8 (1.6) A at 250VAC

REF NO	Description	PRICE
01245.0-00	EFR 011 Electronic Hygrostat with changeover contact. Setting Range 40-90% Relative Humidity	37.09
01246.0-00	EFR 011 Electronic Hygrostat with changeover contact. Relative Humidity pre-set at 65%	37.09



EFR 012 Electronic Hygrotherm

The electronic hygrotherm senses the ambient temperature and the relative humidity in an enclosure and turns on a heater (or a fan) at the set point, which will help to prevent condensation forming. The LED integrated in the adjustment knob is lit when the connected heater is in operation.
Dimensions: 77mmH x 60mmW x 43mmD
Switching Capacity 8 (1.6) A at 250VAC

REF NO	Description	PRICE
01230.0-00	EFR 012 Electronic Hygrotherm with changeover contact. Setting Range 40-90% Relative Humidity Temperature Range 0 to 60°C	86.75



SD 035 Sockets without Fuse

The DIN rail mounted electric socket can be quickly fitted and connected in enclosures permitting the use of auxiliary products such as inspection lamps, measuring devices etc. The unit is available with or without a fuse and in all major world socket standards.

Operating Voltage: 250VAC Maximum
 Nominal Current: 16A Maximum (without fuse)
 Fuse Holder with Fuse: 6.3A - 5 x 20mm Fuse
 Fixing: Clip for TS35 DIN Rail
 Dimensions: 92mmH x 62mmW x 48mmD

REF NO	Description	PRICE
03500.0-01	German socket without fuse	8.27
03501.0-01	French socket without fuse	10.36
03502.0-01	Swiss socket without fuse	15.45
03503.0-01	UK socket without fuse	12.40
03504.0-01	USA / Canada socket without fuse	14.50
03505.0-01	Italian socket without fuse	16.45

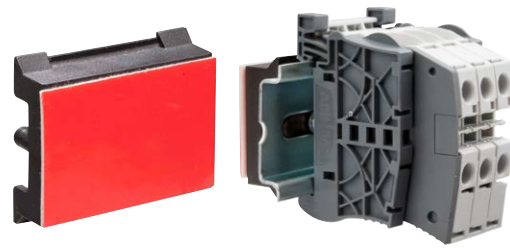


SD 035 Sockets with Fuse

REF NO	Description	PRICE
03500.0-00	German socket with fuse	11.77
03501.0-00	French socket with fuse	13.35
03502.0-00	Swiss socket with fuse	18.76
03503.0-00	UK socket with fuse	16.02
03504.0-00	USA / Canada socket with fuse	19.07
03505.0-00	Italian socket with fuse	18.57



03503.0-01



Stegofix

STEGOFIX is a self adhesive plastic unit with adhesion power which will bear a continuous load of 200gms and 500gms after a period of 24hrs. The high performance industrial adhesive bond is also non-aging and designed with high safety tolerances. The mounting surface, which may be smooth metals, lacquered surfaces, plastics (other than polyethylene, polypropylene and rubber), must be dry and free from dust, oil, separating agents and other contamination. It has a temperature range of 30°C to 55°C. Thermostats or HGK heaters may be directly mounted on STEGOFIX. For use with wider heaters or other items, DIN rail may also be fixed using STEGOFIX

REF NO	Description	PRICE
09510.0-01	Stegofix Adhesive Pad	6.37

KL 025 Compact Lamp

The Stego compact lamp KL025 is specially designed for use within switch and control cabinets. The rear face is magnetic enabling the lamp to be positioned and repositioned securely. The IP20 lamp can also be mounted onto TS35 DIN Rail

Lamp Type: Compact Fluorescent lamp with integral starter
 Power Consumption: 11W (Equivalent to a 75W incandescent bulb)
 Luminosity: 900 LM
 Service Life: 5,000 Hours
 Connections: 3 Pole Screw terminal 2.5mm² with cable clamp
 Dimensions: 355mmL x 65mmW x 70mmD

REF NO	Description	PRICE
02500.0-07	230V AC Lamp without Socket Class II Double Insulated	37.50
02510.0-00	230V AC Lamp with UK Socket Class I Earthed	40.18
02505.9-01	110V AC Lamp without Socket Class II Double Insulated	45.26



02510.0-00

02500.0-07



LED 025 LAMP WITH ON/OFF LIGHT SWITCH

LED 025 Lamp Series

The LED 025 is suitable for all types of panels and enclosures, especially where space is at a premium. They are available with powerful nonslip rubberised magnets allowing them to be quickly positioned in any steel enclosure. Alternatively, there is a version that can be mechanically fixed. The power output allows up to 10 lamps to be connected to each together. Connections between lamps and to the main power source is easy with snap lock connectors. Lamps are IP20 and Class II Double Insulated.

Lamp Type: 6500K LED
 Power Consumption: 5W Maximum
 Luminosity: 290Lm at 120°
 Service Life: 60,000 Hours at 20°C
 Connections: 2 Pole Connector with Snap Lock
 Dimensions: 351mmL x 36mmW x 32mmD

REF NO	Description	PRICE
02540.0-01	LED 025 Lamp; Screw Fixing 100-240VAC 50/60Hz; On/Off Light Switch	36.95
02540.1-01	LED 025 Lamp; Screw Fixing 24-48VDC; On/Off Light Switch	59.23
02541.0-01	LED 025 Lamp; Screw Fixing 100-240VAC 50/60Hz; PIR Movement Sensor	78.79
02541.1-01	LED 025 Lamp; Screw Fixing 24-48VDC; PIR Movement Sensor	95.10
02540.0-00	LED 025 Lamp; Magnet Fixing 100-240VAC 50/60Hz; On/Off Light Switch	42.38
02540.1-00	LED 025 Lamp; Magnet Fixing 24-48VDC; On/Off Light Switch	64.67
02541.0-00	LED 025 Lamp; Magnet Fixing 100-240VAC 50/60Hz; PIR Movement Sensor	81.51
02541.1-00	LED 025 Lamp; Magnet Fixing 24-48VDC; PIR Movement Sensor	97.81



LED 025 LAMP WITH PIR MOVEMENT SENSOR

Accessories for LED025

REF NO	Description	PRICE
244356	2 x 1.5mm ² AC Power connection cable with one open end and one white female connector - 2M	7.07
244360	2 x 1.5mm ² DC Power connection cable with one open end and one blue female connector - 2M	7.07
244358	1 Metre Extension Cable for Daisy chaining LED025 - AC	7.45
244362	1 Metre Extension Cable for Daisy chaining LED025 - DC	7.45
264057	AC Female connector - White	3.81
264058	AC Male connector - White	3.43
264059	DC Female connector - Blue	3.81
264060	DC Male connector - Blue	3.43



264058

264057

244358

