

Project Profile : Five integrated services centres

- **Client:**
Ashe / Leicester City Council
- **Location:**
Leicester
- **Lifespan:**
40 + years
- **Completion date:**
August 2011
- **Size:**
120 m²
- **Project cost:** Typically £220 k
(excluding ground works)



At the end of August, the Fordingbridge team were delighted to hand over five new buildings to Leicester City Council. These Integrated Services Centres located around the city, are part of the 'One Leicester' commitment to investing in Leicester's children and young people.

They will improve the availability of services provided by the Council and partner agencies, to work in a coordinated way to meet the additional needs of children and young people aged 13 to 19.

LCC gave us a tight time scale to take the buildings from design to completion. Fordingbridge were able to provide a full design and build service, taking the project through the planning process to hand over. The construction of each building took just twelve weeks with all five buildings staggered over a six month period.

The five 120 m² buildings have identical plans and elevations to include a meeting room, consultation rooms, reception and office space for both permanent and temporary staff.

“ The quality of the build and value for money means that we would definitely consider using Fordingbridge again for future projects. They were very friendly, helpful, approachable, and acted professionally providing guidance to us in the delivery process and helping us maintain our deadlines by adjusting their programme when required. The team listened to us and negotiated very well addressing our needs (as per our specifications, including variations effectively.

”
Vicky Wibberly,
Interim Head of Service Capital at
Leicester City Council

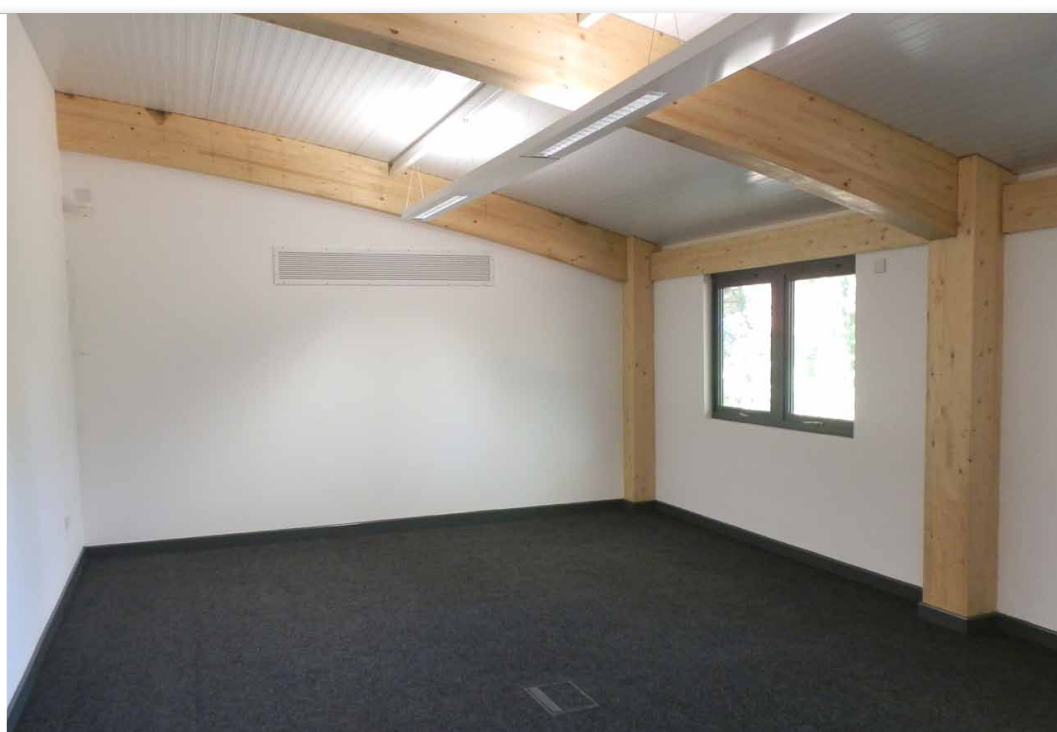


At Fordingbridge we offer a turnkey solution taking your project from concept to completion...

- Initial consultation
- Feasibility
- Design & Planning
- Construction
- Completion

Simplicity in Construction

We use a tried and tested construction method, with standardised components manufactured off site. The minimal use of wet trades means buildings can be occupied within weeks rather than months.



Sustainable, energy efficient & cost effective.

At Fordingbridge we believe that all buildings should be intrinsically sustainable no matter what the size, use or budget. Here are a few design aspects that ensure that our buildings are not only welcoming places for our clients but are also extremely energy efficient and cost effective:

- Curved sustainably sourced FSC laminated timber frame. Timber makes a great natural structural material with an excellent strength to weight ratio.
- Low maintenance, highly insulated composite wall and roof panels, minimise heat loss from the building. Our construction teams pay particular attention to sealing the buildings for air tightness to avoid warm air escaping.
- Fordingbridge use argon filled double glazing with a low emission coating as standard in all of our buildings. This provides an exceptionally low U-Value, meaning very little heat can escape from the building.
- Natural ventilation: a passive ventilation system and opening windows provide enough fresh air to remove the need for mechanical ventilation.
- An underfloor heating system supplied via an air source heat pump, provides heating with an extremely low energy demand.

EPC- Energy Performance Certificate

A

All our buildings achieve an 'A' rated EPC

B

C

D

E

F

G