

Project Profile : Sustainable nursery building

- **Client:**
Warings
- **Location:**
Lakeside North Harbour, Portsmouth
- **Lifespan:**
40 + years
- **Completion date:**
September 2012
- **Size:**
264 m²
- **Project cost:** Typically £480 k
(excluding ground works)



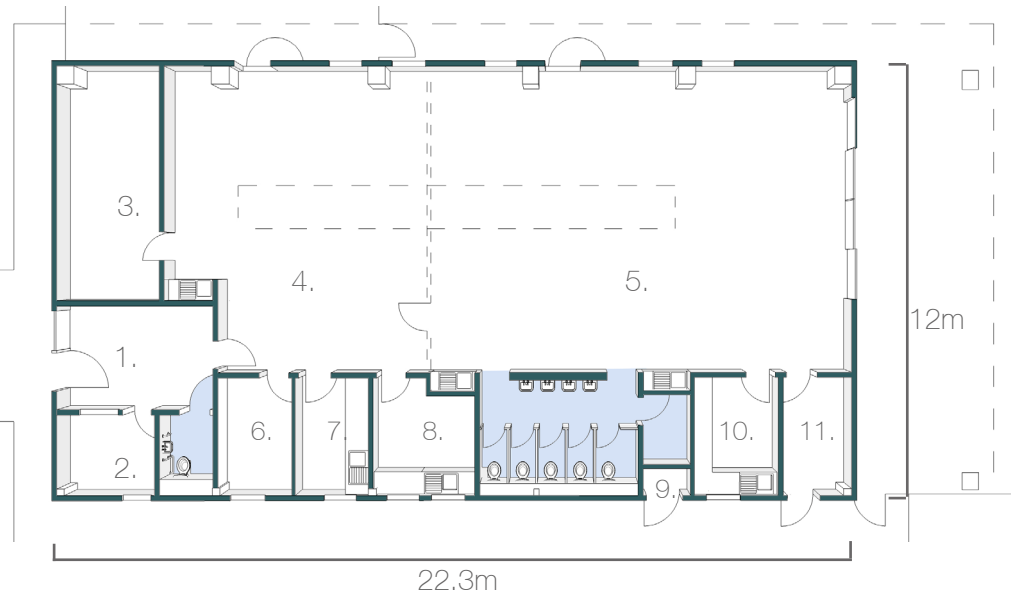
In collaboration with Thorpe Wheatly Architects, Fordingbridge plc delivered a sustainable day nursery for a new office development site in Portsmouth.

The nursery features a large main play space for up to 60 children from 0-5 years of age, in addition to a number of ancillary spaces such as a training room, staff room and sleep room.

Sustainably sourced glulam timber arches span the entire width of the building and a wildflower meadow roof and colour coordinated windows animate the building envelope.

A stylish tensile kite canopy marks the entrance to the nursery, and a larger full width canopy provides sheltered play in the garden space.

Externally the building is horizontally timber clad with a matching fence enclosing both soft play and turfed play space.



1. Reception
2. Office
3. Sleep room
4. 1-2 year playspace
5. Main playspace
6. Office/training room
7. Changing area
8. Kitchen
9. Laundry room
10. Kitchen with cooking facilities
11. Refuse store



At Fordingbridge we offer a turnkey solution taking your project from concept to completion...

- Initial consultation
- Feasibility
- Design & Planning
- Construction
- Completion



Simplicity in Construction

We use a tried and tested construction method, with standardised components manufactured off site. The minimal use of wet trades means buildings can be occupied within weeks rather than months.

EPC- Energy Performance Certificate

A

All our buildings achieve an 'A' rated EPC

B

C

D

E

F

G

Sustainable, energy efficient & cost effective.

At Fordingbridge we believe that all buildings should be intrinsically sustainable no matter what the size, use or budget. Here are a few design aspects that ensure that our buildings are not only welcoming places for our clients but are also extremely energy efficient and cost effective:

- Curved sustainably sourced FSC laminated timber frame. Timber makes a great natural structural material with an excellent strength to weight ratio.
- Low maintenance, highly insulated composite wall and roof panels, minimise heat loss from the building. Our construction teams pay particular attention to sealing the buildings for air tightness to avoid warm air escaping.
- Fordingbridge use argon filled double glazing with a low emission coating as standard in all of our buildings. This provides an exceptionally low U-Value, meaning very little heat can escape from the building.
- Natural ventilation: a passive ventilation system and opening windows provides enough fresh air to remove the need for mechanical ventilation.
- An underfloor heating system supplied via an air source heat pump, provides heating with an extremely low energy demand.