

Project Profile : Sustainable visitor centre

- **Client:**
The Wey & Arun Canal Trust
- **Location:**
Loxwood, West Sussex
- **Lifespan:**
40 + years
- **Completion date:**
January 2012
- **Size:**
38 m²
- **Project cost:** Typically £95 k
(excluding ground works)

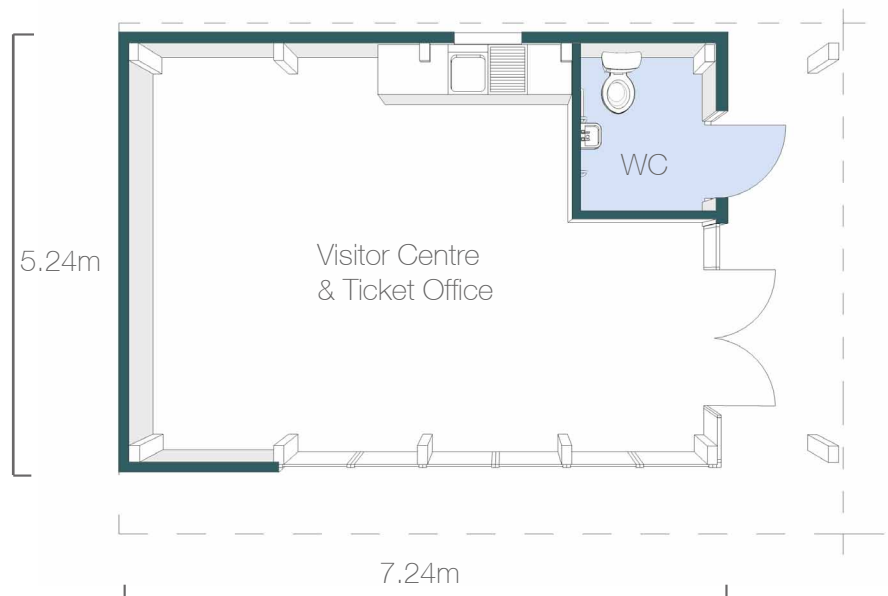


This visitor centre was commissioned by the Wey & Arun Canal Trust to act as a vital information and resource centre to help raise awareness of the WACT's aim; working to achieve the restoration of a navigable link between London and the sea.

The centre, located alongside the canal also acts as a ticket office for the Trust's successful boat trips held throughout the year.

The Wey & Arun Canal Trust approached us for an inspiring modern building that would be sensitive to its rural surroundings as well as energy and cost effective. Fordingbridge were able to offer a design and build solution.

The building is constructed using a sustainable glu-laminated timber frame, highly insulated walls, triple glazed windows and external timber cladding. The building also has a green sedum roof to encourage wildlife and biodiversity.



At Fordingbridge we offer a turnkey solution taking your project from concept to completion...

- Initial consultation
- Feasibility
- Design & Planning
- Construction
- Completion



Simplicity in Construction

We use a tried and tested construction method, with standardised components manufactured off site. The minimal use of wet trades means buildings can be occupied within weeks rather than months.

EPC- Energy Performance Certificate



Sustainable, energy efficient & cost effective

At Fordingbridge we believe that all buildings should be intrinsically sustainable no matter what the size, use or budget. Here are a few design aspects that ensure that our buildings are not only welcoming places for our clients but are also extremely energy efficient and cost effective:

- Curved sustainably sourced FSC laminated timber frame. Timber makes a great natural structural material with an excellent strength to weight ratio.
- Low maintenance, highly insulated composite wall and roof panels, minimise heat loss from the building. Our construction teams pay particular attention to sealing the buildings for air tightness to avoid warm air escaping.
- Fordingbridge use argon filled triple glazing with a low emission coating as standard in all of our buildings. This provides an exceptionally low U-Value, meaning very little heat can escape from the building.
- Natural ventilation: a passive ventilation system and opening windows provides enough fresh air to remove the need for mechanical ventilation.
- An underfloor heating system supplied via an air source heat pump, provides heating with an extremely low energy demand.