

## Contact Us



**GAME Engineering Ltd**  
Witham St Hughs Business Park  
Witham St Hughs  
Lincoln LN6 9TW

Tel: +44 (0)1522 868021  
Fax: +44 (0)1522 868027

[sales@game-engineering.com](mailto:sales@game-engineering.com)  
[www.game-engineering.com](http://www.game-engineering.com)

GAME Engineering Ltd is a company registered in England and Wales with company number 1872121. VAT Number: 416 1838 57

### Directors

**Mr Peter Ablewhite**  
Managing Director  
[pablewhite@game-engineering.com](mailto:pablewhite@game-engineering.com)

**Mr Tony Kirk**  
Business Development Director  
[tkirk@game-engineering.com](mailto:tkirk@game-engineering.com)

### Engineering

**Mr David Burkitt**  
Project Engineering Director  
[dburkitt@game-engineering.com](mailto:dburkitt@game-engineering.com)

**Mr Stewart Brown**  
Project Manager  
[sbrown@game-engineering.com](mailto:sbrown@game-engineering.com)

**Mr Justin Ward**  
Project Manager  
[jward@game-engineering.com](mailto:jward@game-engineering.com)

**Mr Adrian Wellington**  
Project Sales Manager  
[awellington@game-engineering.com](mailto:awellington@game-engineering.com)

**Mr Darren Kirk**  
Project Sales Engineer  
[dkirk@game-engineering.com](mailto:dkirk@game-engineering.com)

**Mr Richard Chubb**  
Project Manager (Engineering)  
[rchubb@game-engineering.com](mailto:rchubb@game-engineering.com)

### Marketing

**Mrs Karen Jacklin**  
Marketing Manager  
[kjacklin@game-engineering.com](mailto:kjacklin@game-engineering.com)

**Peter Corlett**  
Marketing  
[pcorlett@game-engineering.com](mailto:pcorlett@game-engineering.com)

### Health & Safety

**Mr Peter Stow**  
Health & Safety Advisor  
[pstow@game-engineering.com](mailto:pstow@game-engineering.com)

# GAME

MATERIALS PROCESSING & HANDLING ENGINEERS



Our Experience is your Guarantee



## GAME Engineering Ltd



**GAME Engineering Ltd is a privately owned company based in Lincoln. We are leading materials processing and handling engineers with 25 years experience in providing processing, handling, storage and bespoke solutions to clients.**

We have a unique and proven ability to deliver innovative, imaginative and real world solutions to our customers and have built our hard earned reputation by consistently completing successful projects while at the same time developing excellent working relationships with our clients.

**GAME Engineering Ltd work within a diverse range of industry sectors, offering expertise in:**

- Pet Food
- Animal Feed
- Biomass Handling & Fuel Generation
- Bulk Storage Systems
- Construction & Aggregate
- Grain & Seed
- Pet Food
- Waste Recycling

GAME originally focussed on the resale, installation and re-conditioning of second hand feed milling equipment, and over the first 10 years of business GAME quickly progressed to specialists within the animal feed and grain industries, with in-depth knowledge and experience in turnkey design and plant solutions. The people who work at GAME are passionate individuals who take pride in the work that they

do, and the company has been built on hard work and dedication through the relationships built and nurtured internally and externally with clients in all the areas they specialise in.

**Clients benefit from:**

- Extensive target industry knowledge
- Bespoke design & manufacturing
- Innovative solutions to fit within existing plant, lines and buildings
- State of the art CAD design skills
- Extensive experience of turnkey project engineering and management
- Principal contractor services with project managers who are experienced at managing other contractors and other equipment manufacturers
- Site installation and on-site construction
- Our own installation teams

We'll offer impartial advice. And, because we're independent, we'll manufacture the best solution to fit your budget. We think through the implications of proposed solutions to ensure you maximize the return on your investment.

In 2010, GAME were appointed distributors for the specialist bin supplier SCE, Silo Construction Engineering Limited of Belgium, to bring SCE's range of single and twin skin bins to the market in the United Kingdom and throughout Ireland.

**Our Experience Is Your Guarantee**



## Custodial Division

**The GAME Custodial division are experts with a reputation of offering practical solutions, innovative design, manufacturing and installation services to its clients.**

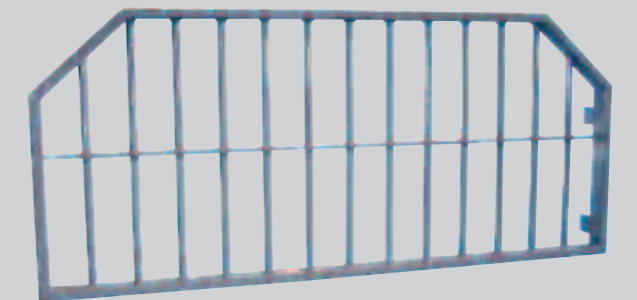
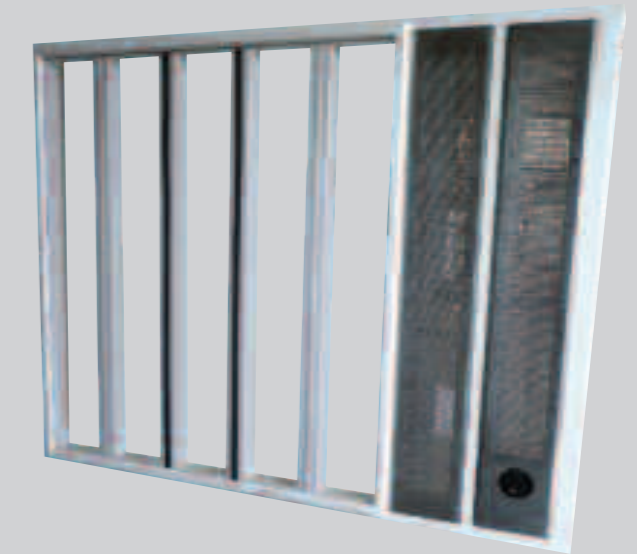
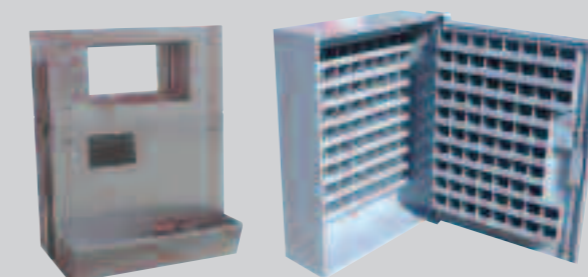
Over the years, GAME has acquired a wealth of knowledge and experience in numerous sectors, enabling strong customer relationships to be formed.

**“GAME has been a very useful and flexible Subcontractor. Kier have used them on both major refurbishment and new build projects and they have always exceeded expectations.”**  
Quantity Surveyor, Kier Southern

**Clients benefit from:**

- Deep knowledge of the security industry
- Design and bespoke manufacture
- Innovative solutions to fit within existing facilities
- State of the art CAD design skills
- Principal contractor services
- Site installation and on-site construction
- Our own qualified and 100% CSCS certified installation teams
- With a purpose built manufacturing facility on-site, complete with fabrication workshops and painting booth
- GAME are able to fully control and monitor the items produced. The close proximity of the workshop and CAD team results in a seamless process where communication can be very hands on if required.

GAME has Ministry of Justice approval for the manufacture and installation of enhanced security grilles, grille gates, and high security cell doors and windows. All GAME's specialist prison services installation teams have Home Office Security Clearance and Safety Competence Passport Certification.



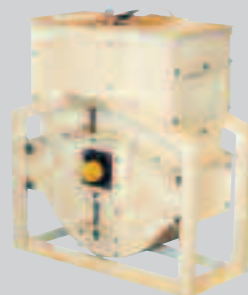
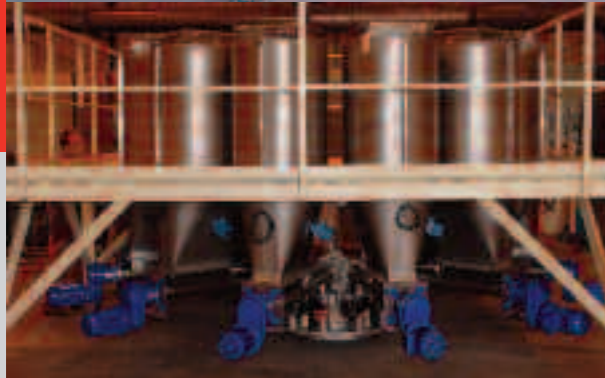
**GAME offer expertise in the following industry sectors:**

- HM Prisons & YOI
- Immigration Removal Centres
- Police
- Customs & Excise/Crown Prosecution Services
- Secure Hospitals
- Banks/Cash Houses
- Turf Accountants
- Enhanced Residential Security

**Grille Gates Cell Doors Blast Resistant Window Cell Observation Window Key Safe Security Cages Anti-Ligature Ventilation Grille Ballestrades Link Bridges & Gantries Arm Barriers Fire Resistant Glass Staircases Security Gates Timber Core Steel Door Mesh Window Grille Key Chute Pedestrian Turnstiles Access Ladders Radiator Cover Security Glazing Pharmacy Hatch Drug Dispense Hatch Smoke Detector**

**GAME**  
PRISON APPROVED SECURITY ENGINEERS

## Products



From humble beginnings twenty five years ago, **GAME** originally specialised in the resale and installation of used and reconditioned feed milling equipment but quickly expanded into designing projects requiring new machinery. This led to the company manufacturing their own range which can be found in a variety of industries from pet food producers through to conveying and handling systems in aggregates and plaster board manufacturers. **GAME** has also supplied special purpose equipment to de-aerate powder in Asia.

### Our range of equipment includes:

- GPM Paddle Blade Mixers
- Divertor Valve
- Ribbon Blade Mixers
- Material Recycling Facilities (MRF's)
- Micro-Ingredient Facilities
- Rotary Sifters
- Self Clean Elevator Boot
- Slides
- WEEE Workbench
- Bespoke Fabrications

## Our Clients

Our clients benefit from comprehensive policies on health and safety, as we operate a **SAFE (Safety Awareness For Everyone) Policy** - so we take responsibility for the health and safety of everyone, including your staff, who may be affected in any way by our work.

- NEBOSH qualified Health and Safety Advisor
- CPCS Appointed Persons (lifting operations) to manage our own crane lifts
- SMSTS (5 day) qualified Project Managers
- CITB Site Safety Plus qualified Supervisors
- CSCS cards for all site operatives
- CCNSG Safety Passports
- CPCS qualified Telehandler drivers
- Rigging, slinging and banksman training
- IPAF licences (access platforms)
- PASMA (portable scaffolds)
- 3/4 day first aid training

We also have a working knowledge of the governing legislation and health and safety requirements for a variety of industry sectors operating a comprehensive Quality Management Standard. Our health and safety schemes include Food Safety Passport Certification, and Safety Passport Competence Schemes, and we work to CDM Regulations, meeting HSE standards.

### We are members of:

- SHAPA - Solids Handling & Processing Association
- CHAS - Contractors Health & Safety Assessment Scheme
- RoSPA - Royal Society for the Prevention of Accidents
- CSCS - Construction Skills Certification Scheme

Throughout projects a continual all-risks assessment and analysis approach is adopted, which starts with an initial project risk assessment to identify key risk areas (whether they be commercial, safety, health, environmental etc.). The necessary control measures and subsequent actions can then be identified and will cascade down through the project teams and be implemented to suit the needs of the project.

As a typical cross section, besides trade and professional qualifications, our personnel have the following safety and competence training which we actively maintain:

Back this up with our commitment to continual improvement and the level of support and advice that our site teams can call upon and we offer a service that you can rely upon to get the job done safely, on time and at cost.





## Pet Food

**GAME Engineering** are recognised as one of the market leaders in building new pet food extrusion plants as well as major plant extensions. With a team of highly professional engineers **GAME** can understand the changes in the ever stringent legislation and are able to implement these into our client's production facilities.

GAME takes pride in being able to meet and exceed their client's requirements and being able to offer services to design, construct, upgrade, refurbish, extend or improve the processing facilities in the pet food sector.

### Past Projects:

- New Production Plant
- Extra Extrusion Line
- Relocate and Install Packing Machinery
- Transfer Routes to Packing
- Process & Packaging Extruder Plant
- Bird Seed Intake & Cleaning and Robotic Palletising

"Wagg Foods has enjoyed a long and fruitful relationship with GAME Engineering and long may it continue. The engineers at GAME have the experience and professionalism we require to complete our projects with minimum disruption to the rest of the plant."

**George Page, Production Director at Wagg Foods**

### Clients that GAME has worked with in the Pet Food sector include:

- Alpha Feeds Ltd
- Burgess Pet Care
- Crown Pet Foods Ltd
- Delta Premium Petfoods
- John Pointon & Sons Ltd
- Mars Horsecare UK Ltd
- Duke's & Botley Agriculture Ltd
- Gablestock Ltd
- JE Haiths Ltd
- Kennelpak Ltd
- Wagg Foods Ltd



## Waste Recycling

**GAME Engineering Ltd** is regarded as one of the UK's leading materials processing & handling engineers, and have been actively providing materials handling and storage solutions to the Waste Recycling sector for many years.

All of the projects completed for clients are bespoke, meeting the individual specifications and requirements of the client.

### Past projects include:

- WEEE Process Line
- Plastics Auto Sorting System with Colour Separation
- Skip Waste Sorting Line
- Materials Recycling Facility (MRF)
- Steel & Aluminium Can Sorting Plant
- WEEE Shredding Line

That's why, after 20 years in the industry, many of the leading recycling companies and power generators are turning to GAME for their knowledge of providing project based solutions.

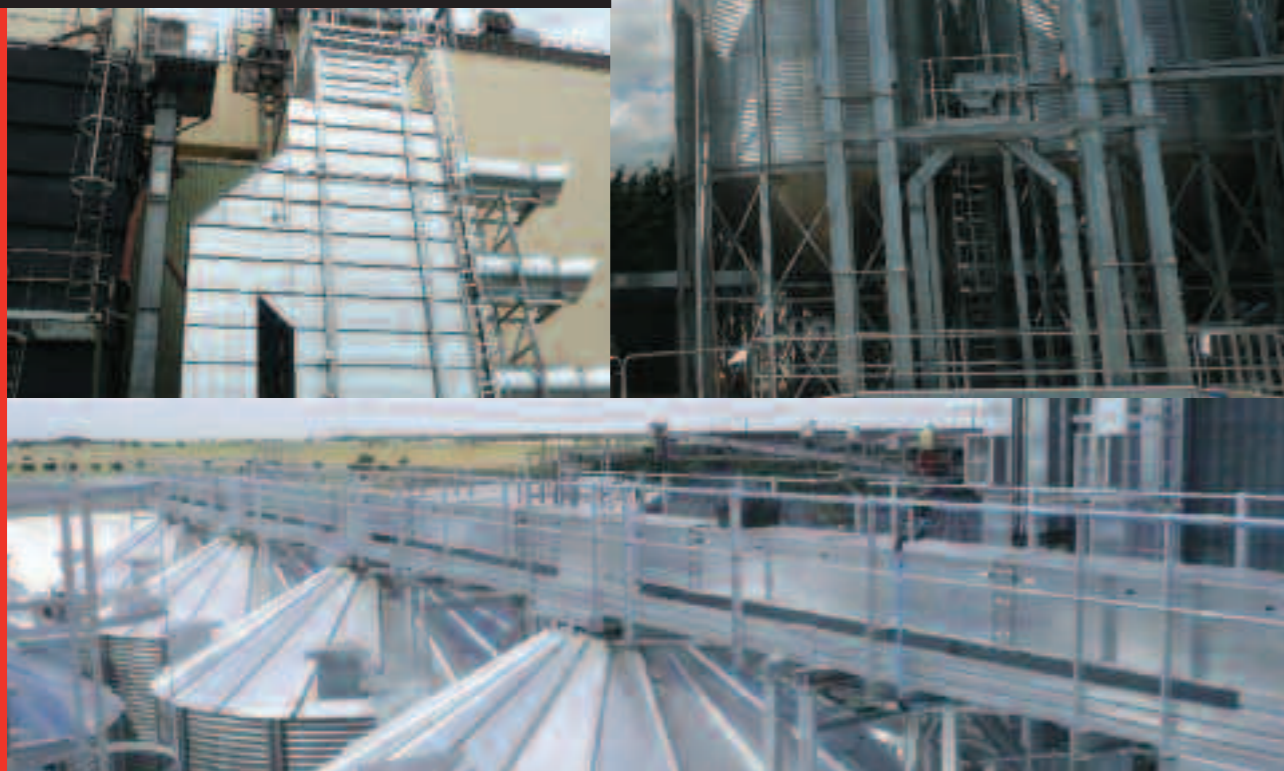
'GAME designed and built a Waste Processing Plant in keeping with the development plans of the John Wade Group at Aycliffe Quarry. Their remit was to provide a system that would interface with existing waste processing equipment, to deal with the need for greater waste sorting and separation. The build quality was excellent and the whole installation was seamless. Many more projects are being considered at Aycliffe Quarry and GAME will be at the top of our list of suppliers' **Operations Manager, John Wade Group**

### Clients that GAME has worked with in the Waste Recycling sector include:

- Crumb Rubber Ltd
- Greenstar Environmental Ltd
- JEWade & Sons Ltd
- Specialist Computer Centres Plc



## Grain & Seed



**GAME Engineering Ltd has been working in the Grain & Seed sector since its formation in 1986, originally focussing on the design, manufacture and installation of milling equipment.**

Specialising in these sectors, GAME has amassed a wealth of knowledge, experience and capabilities which have been implemented into a variety of projects.

The expertise that GAME hold in turnkey solutions and CAD Design, means they can offer services to design, construct, upgrade, refurbish, extend or improve processing facilities.

### Past projects include:

- Cereals Intake & Transfer System
- Bird Seed Intake and Cleaning
- Seed Plant Production
- Colour Sorter Installation
- Grass Seed Pre-Cleaner Installation
- Linseed Seed Treating Plant
- Seed Cleaning Plant Upgrade

“A vital area for any production business is to have confidence or trust in the engineering company you employ to undertake either installation work or routine maintenance, knowing it will be completed by pre-agreed deadlines. Game Engineering has certainly proved that they can meet this requirement again and again, which is one of the main reasons we have entrusted installing a new cleaning line to them in the past, as well as routine maintenance and again this year installing new equipment for ourselves. They have also provided engineering solutions to problems we have asked them to solve” **Masstock Arable (UK) Ltd – Kevin Woodman, Production Manager**

### Clients that GAME has worked with in the Grain & Seed sector include:

- Advanta Seeds UK Ltd
- Barenburg (UK) Ltd
- Cargill Plc
- Johnston & Jeff Ltd
- Masstock Arable (UK) Ltd
- Simpsons Malt Ltd
- Nickerson (UK) Ltd
- Openfield Agriculture Ltd
- WoldGrain Ltd

## Animal Feed



**GAME Engineering Ltd is regarded as one of the UK's leading materials processing & handling engineers specialising in the animal feed sector. GAME has a team of highly professional engineers who understand the changes in the ever stringent legislation and are able to implement these into the client's production facilities.**

GAME's ability to meet and exceed the requirements of feed manufacturers results in them offering services to design, construct, upgrade, refurbish, extend or improve the processing facilities in animal feed mills.

### Past projects include:

- Pellet Press & Conditioning Installation
- Micro-Ingredients Additives System
- New Production Plant
- Liquid Coating System
- Raw Material Storage System
- Cooling Systems
- Screening Systems
- Upgrading Pellet Lines

“GAME Engineering are one of the very few contractors who offer a truly cost effective overall package who can be trusted to deliver the project.” **Lindsay Sharp National Engineering Manager - ABN**

### Clients that GAME have worked with in the Animal Feed sector include:

- AB Agri Ltd
- BOCM Pauls Ltd
- Dengie Crops Ltd
- Humphrey Feeds Ltd
- I' Anson Brothers Ltd
- Sun Valley Feeds Ltd

In 2010, GAME were appointed distributors for the specialist bin supplier SCE, Silo Construction Engineering Limited of Belgium, to bring SCE's range of single and twin skin bins to the market in the United Kingdom and throughout Ireland.

Working closely with SCE and with other sub contractors, GAME Engineering can offer a design and build service for twin and single skin bins including erection, installation of conveyors, feeders and other process machinery. Civil engineering, electrical engineering and control can be provided within the turnkey packages.



## Biomass Handling & Fuel Generation

**GAME Engineering Ltd is regarded as one of the leading materials processing and handling engineers specialising in the Biomass Handling and Fuel Generation sector. Working with some of the key players in the power industry, GAME design, manufacture and install solutions in Biomass, Renewable and Alternative Fuels sector.**

With a team of highly professional engineers who understand the changes in the ever stringent legislation, GAME can implement these into their client's production facilities.

The expertise that GAME hold in turnkey solutions and CAD Design, means that they have fast become leaders in innovative Biomass Handling solutions offering services to design, construct, upgrade, refurbish, extend or improve processing facilities.

### Past Projects:

- Bio-Fuels Storage Area and Feed System
- Wood Pelleting Production Plant
- Wood Chip Intake System



- Wood Pellet (Biomass) Fuel Production
- Biomass Platform Design & Detail
- Straw Pelleting Plant
- Biomass Intake & Storage
- Repairs of Fire Damaged Equipment
- Wood Pelleting & Briquetting Facility
- Power Station Fly Ash System

"Game Engineering provided a wood chip handling system and storage chamber. Game took on board the design of all facets of this wood chip intake and transfer distribution system, manufacturing all required equipment, controls and access walkways and installed all the plant and equipment. They proved themselves up to the job and able to respond to a fast track programme to ensure the plant was operational on time." **CMB Engineering Ltd - Alan Thomson, Contracts Engineer**

### Clients that GAME has worked with in the Biomass Handling & Fuel Generation sector include:

- CMB Engineering Ltd
- Drax Power Ltd
- Edgar F. Shepherd
- Verdo Renewables Ltd
- RWE Npower Plc
- Southern Electric Contracting Ltd
- Wood Energy Ltd

05

## Construction & Quarrying

**GAME Engineering Ltd is regarded as one of the UK's leading materials processing & handling engineers. With a team of highly professional engineers GAME can understand the changes in the ever stringent legislation and are able to implement these into the client's production facilities.**

GAME prides themselves in being able to meet and exceed requirements by offering services to design, construct, upgrade, refurbish, extend or improve processing facilities.

### Past Projects include:

- Sand Packing Line
- Screed Product Line
- Batch Plant Refurbishment
- Gypsum & Limestone Intake Upgrade
- Cement Return System Upgrade
- Screw Conveyor System
- Sand/Water Screening
- New Transfer Systems
- Sand Elevator Replacement
- 30TPH Rotary Sifter for Plasterboard Production

"GAME kept us informed of everything that was going on. The plant is exactly what we needed and wanted and we are very please with the results."

**Site Manager, Hanson Packed Products**

### Clients that GAME has worked with in the Construction & Quarrying sector include:

- Beatson Clarke Plc
- British Gypsum
- Cemex
- Clugston Construction Ltd
- Hanson Packed Products
- Knauf Plasterboard
- Lafarge Cement UK
- Omya UK
- Pilkington
- Tarmac Central Ltd



06