



rail infrastructure  
and public realm



SUNDERLAND STATION –  
LOWER GROUND PLATFORMS

Steel Line Ltd  
415 Petre Street  
Sheffield  
South Yorkshire  
S4 8LL

t +44 (0) 114 231 7330  
f +44 (0) 114 256 0330  
[colin.campbell@steelline.co.uk](mailto:colin.campbell@steelline.co.uk)

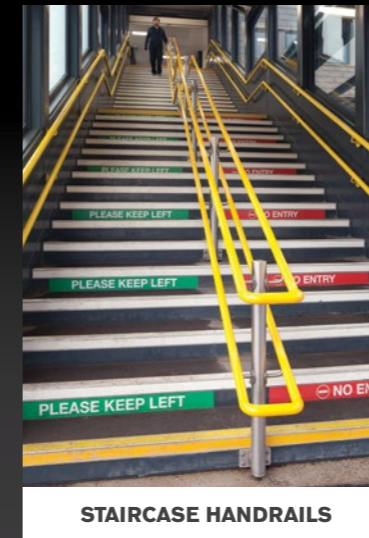
# rail infrastructure



STEEL LINE



STANDUP SEATS



STAIRCASE HANDRAILS



BALUSTRADES



PERCH BENCHES

## INTRODUCTION

### An Introduction to Steel Line Products.

Steel Line chose to specialise in the fabrication of stainless steel and it has proven to be an eminently suitable material for rail infrastructure and public realm furniture.

The company is a specialist stainless steel fabricator, expert in designing and engineering durable, yet elegant public realm furniture and balustrading/handrails for robust public areas such as rail stations, transport interchanges and town centres.

A comprehensive product range is manufactured at the company's Sheffield factory comprising:

- Seats, benches and perch benches.
- Bollards, static, removable and fold-down.
- Cycle stands, root fixed, base plated and bespoke designs.
- Litter bins, floor, wall and post fixed.
- Tree grilles and guards.
- LBP and fingerposts, signage.
- Architectural metalwork and bespoke client designs.

Two specific furniture designs which have already been installed and proven their value in rail stations and shopping centres are the Metro and Standup ranges. They have been engineered as whole life cost products (35+ years) to assist in meeting the rail industry's objective of reducing operational and maintenance costs in line with European competitors.

With a comprehensive range of balustrading and handrailing options, including DDA designs, Steel Line is an ideal partner to fit out station platforms and access stairways in any infrastructure project including concourse areas to the station frontage.

Steel Line is an approved supplier to East Coast Main Line, East Midlands Trains and has accreditations from Linkup Engage Reg. 092727 and Constructionline 148455.

## silently robust

Ensuring people can move quickly and safely through a bustling train station is something that any train station manager should give important consideration to. Steel Line is able to design and install a wide range of stair balustrade and handrail products to suit any environment.



## BALUSTRADES & HANDRAILS

### Handrails

Steel Line's stainless steel handrails are generally wall mounted and made from 42/48mm dia tube. They can be produced in a variety of lengths and heights and can be built to specification dependent on the project. The option of powder coating handrails to comply with certain parts of the DDA is also offered.

A simple hoop style range of handrail/barrier rail is available in 48mm dia and 42mm dia tube. As well as being mainstays of UK train stations, these are also popular in swimming pools, car parks and supermarkets.

Steel Line also design and manufacture staircases in a single, multi-level or spiral form. These can be in mild or stainless steel with options for tread design, including durbar plate, tray style or with supports to take wooden treads.

### Balustrades

Manufactured in stainless steel and brass, a wide range of balustrade options are available to designers and architects in terms of baluster profile and infill panels.

Glass, mesh, perforated sheet, tension wire and tubular mid-rails are amongst the most popular whilst a choice of polished finishes is offered in brushed satin or mirror.

All stainless steel systems are manufactured to comply with the relevant British Standards, BS3049, BS5395 Part III and BS6180.

Stainless steel balustrades can be ordered on a supply only or supply and fix basis. On site, the various sections can either be sleeve jointed and secured with tamper proof screws or welded together with the joints dressed and polished out.

## made to measure

Our range of Metro Seats and Benches is one of two product ranges engineered and manufactured by Steel Line designed to offer whole life cost investment of 35+ years.

Metro is a heavy-duty yet cosmetically attractive range of public realm furniture. The seating products are ideal for rail and bus stations, airports and shopping centres.



## METRO SEATS AND BENCHES

### Metro Seats

Our Metro seat has been specifically designed for use in high-traffic areas where seating needs to be comfortable but of rugged construction and resistant to corrosion, graffiti and vandalism. Smoothly polished welds and surfaces that can resist even the most sustained abuse, are just two of the design elements that set our products apart.

Available in a variety of sizes, with or without armrests. Contrary to standard industry practice Metro armrests are stove enamelled stainless steel, not powder-coated. This gives far greater resistance to casual vandalism and because the armrests are mechanically fixed, they can be removed and re-coated if required.

See website [www.metroandstandup.co.uk](http://www.metroandstandup.co.uk)

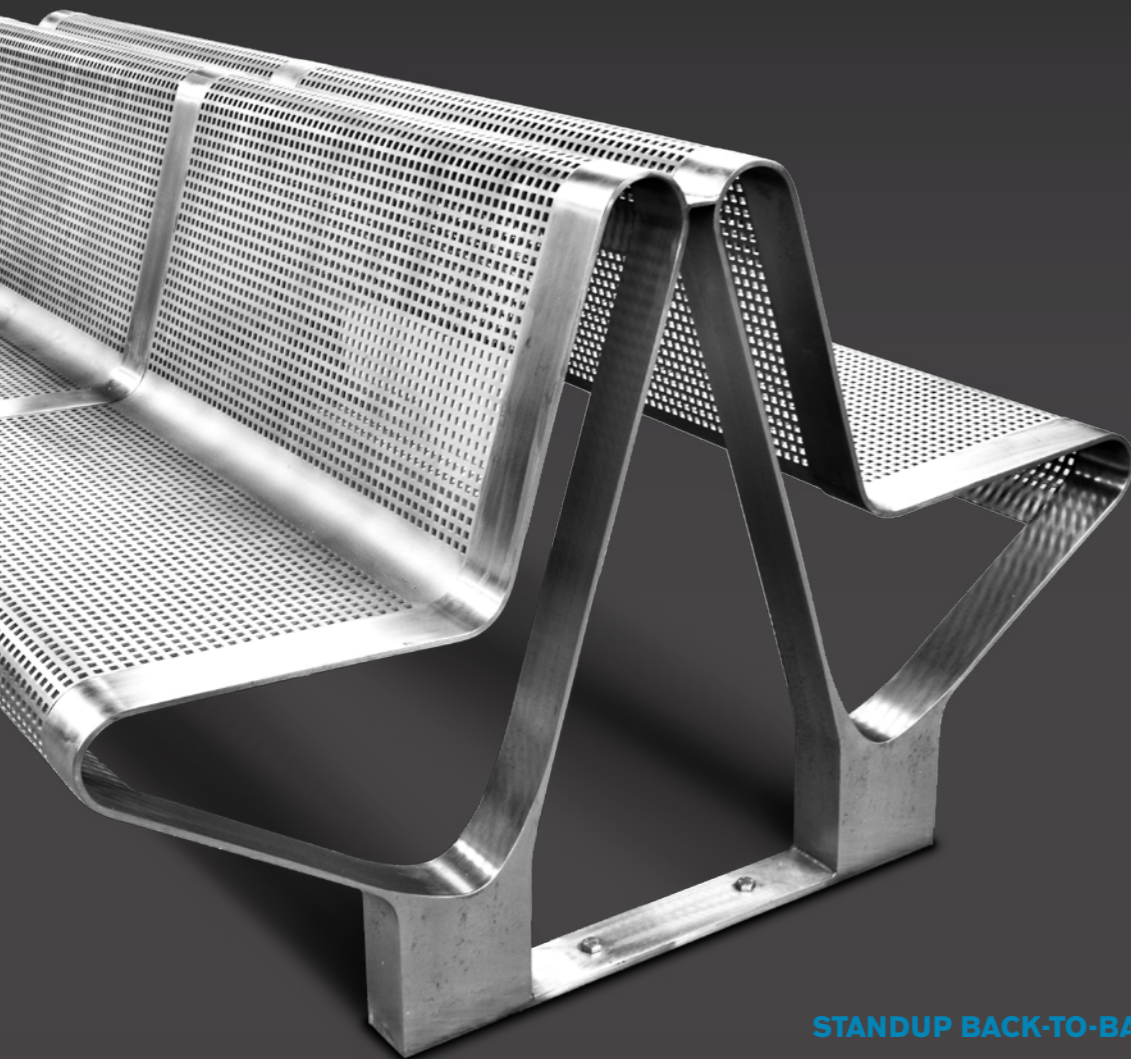
### Metro Benches and Perches

Our stainless steel Metro benches and perches are robustly constructed, comfortable and aesthetically pleasing. Perfect for use in bus and train stations, as well as underground platforms. Again available in a range of sizes to suit site conditions and footfall capacity.



## made to measure

Standup is a robust yet strikingly elegant range of contemporary stainless steel public realm furniture particularly suited for demanding environments such as railway stations and concourses, transport interchanges and shopping centres where traditional seating may not be possible.



STANDUP BACK-TO-BACK SEAT



## STANDUP SEATING PRODUCTS

### Standup Seats

Despite its toughness, the design is one of sculptured refinement, with no visible welds. The satin polished framework contrasts with bead blasted (optional) perforated panels and the curved and flat sections are blended seamlessly. Resistant to corrosion, graffiti and vandalism.

The design principles of the seat are mirrored in the manufacture of the bench and perch products.

See website [www.metroandstandup.co.uk](http://www.metroandstandup.co.uk)

### Standup Benches and Perches

Standup is a product range engineered and manufactured by Steel Line to offer whole life cost investment. The benches and perches have an indeterminable lifespan if maintained, and are resistant to graffiti, corrosion and vandalism. A one off investment in public realm regeneration offering substantial long term cost savings over alternative materials.

The seats, benches and perches are available in both S304 and S316 grades of stainless steel with a satin polish, each product being finished to the highest possible standard.

# street furniture



STEEL LINE



BOLLARDS



CYCLE STANDS



BALUSTRADES & HANDRAILS



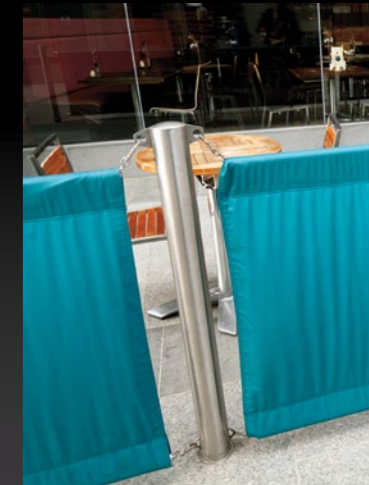
LITTER BINS



SEATS & BENCHES



PLANTERS



ALFRESCO SCREENS

## INTRODUCTION

**Steel Line public realm products:  
Expertly crafted to work in harmony  
with the urban environment.**

Our vast experience and knowledge of metal fabrication has led to the creation of our extensive range of street furniture; a variety of public realm items that are not just exquisitely crafted, but constructed to offer unparalleled levels of robustness and durability.

Steel Line started life in 1979 as a bespoke stainless steel and special metals fabricator manufacturing handrails for trains, buses and boats. Since then the company has grown and expanded through consistent development and innovation until now, we are able to provide a wide variety of products for large scale urban regeneration/public realm developments

Our attention to detail and ability to deliver quality products to demanding deadlines has seen our work feature in some of the UK's most successful public realm developments including:

- The widely publicised and successful regeneration of Sheffield City Centre (ongoing).
- The refurbishment of Sunderland Station lower ground platforms.
- Regeneration of Bromsgrove Town Centre (ongoing).
- East Croydon Station Footbridge renewal.
- M20 J9 footbridge balustrading.
- Centrale Shopping Centre, Croydon.
- Middlesbrough Transporter Bridge.
- Reinvigoration of 44 stations and halts for Nexus (ongoing).
- Leicester Square, London.
- Crossrail Canary Wharf (on going).
- Barnsley Town Centre (on going).



## simply robust

Manufactured to order and available in a wide range of designs, sizes and finishes, our static, fold-down and removable stainless steel bollards are designed to withstand the toughest of urban environments.



## BOLLARDS

### Fixed Static Bollards

Steel Line offers a bespoke manufacturing service to all its clients and is able to manufacture a number of fixed static bollard designs. One-off or batch production capacity is available whilst the only limitations are physical size and weight.

Fixed static bollards can be supplied in various lengths; from 76mm to 254mm in diameter with flat, domed or angle faced tops as standard. Special and bespoke tops are also available and satin polish finish is standard across the range. However we also offer mirror polished and bead blasted options.

### Removable and Fold-Down Bollards

Like our range of fixed static bollards, Steel Line is also able to design and manufacture a wide variety of removable and fold-down bollards.

Available in either large batches or simply made to order, they can be supplied in various lengths from 76mm to 114mm in diameter with flat, domed and angle faced tops as standard. Special and bespoke tops are also available upon request. Satin polish finish is standard across the range.



## simple elegance

Our range of cycle stands are made to order and blend seamlessly with urban environments. Available in a wide range of sizes and with finishes to suit any requirement, Steel Line's cycle stands have formed an important part of successful urban building and regeneration projects for nearly 20 years.

SHEFFIELD CITY CENTRE STANDS



## CYCLE STANDS

### Sheffield Cycle Stands

This is a simple hoop product that can be manufactured to various lengths and heights. The most popular size is 750mm wide x 1100mm high including an allowance of 300mm for submerged fix.

Alternatively, base plates can be fitted for bolting down into concrete. Standard tube diameter is 48mm x 2.5mm wall thickness with a satin polish finish.

### Motorbike Parking Stands

A robust and larger variant of our standard cycle racks that can accommodate both motorbikes and scooters using 101 dia tube.

We can produce the motorbike parking stands in either singular or larger batch orders. All motorbike stands are satin polished and can be submerged fix or bolted to concrete foundations through baseplates.

### Millenium Stand

As the name suggests this elegant cycle stand was designed for the year 2000 and has maintained it's popularity ever since. Generally root fixed rather than baseplated, the stand is 975W x 800H and manufactured in 60 dia stainless steel tube.

### Bespoke Cycle Stands

Steel Line is well-versed and experienced in designing and manufacturing bespoke cycle stands for private or public projects.

The product above is installed in Cardiff City Centre and was part of a larger project to refurbish the Capital Tower building.



## chic efficiency

Our litter bins are ergonomically designed to withstand a tough and demanding existence. Available in 45-125 litre capacities.

SHEFFIELD CITY CENTRE STANDS



## LITTER BINS

### Perforated Litter Bins

An angle top open bin of 60 litre capacity with a perforated mid-section and 400mm-wide body. The body is secured to legs for submerged fix by 10mm spacers. The standard finish is satin polish.

### Cello Bin

The Cello design has a 100 litre capacity with a patterned stainless steel door in contrast to the rest of the panels.

The body is tapered and can be powder coated to create an even greater contrast with the front opening door. An inner liner is provided.

### Promenade Bin

In a flat bar design with flared top and internal liner, there are two capacities of 80 or 100 litres. The base is four-times drilled for bolting into concrete and the standard finish is satin polish.

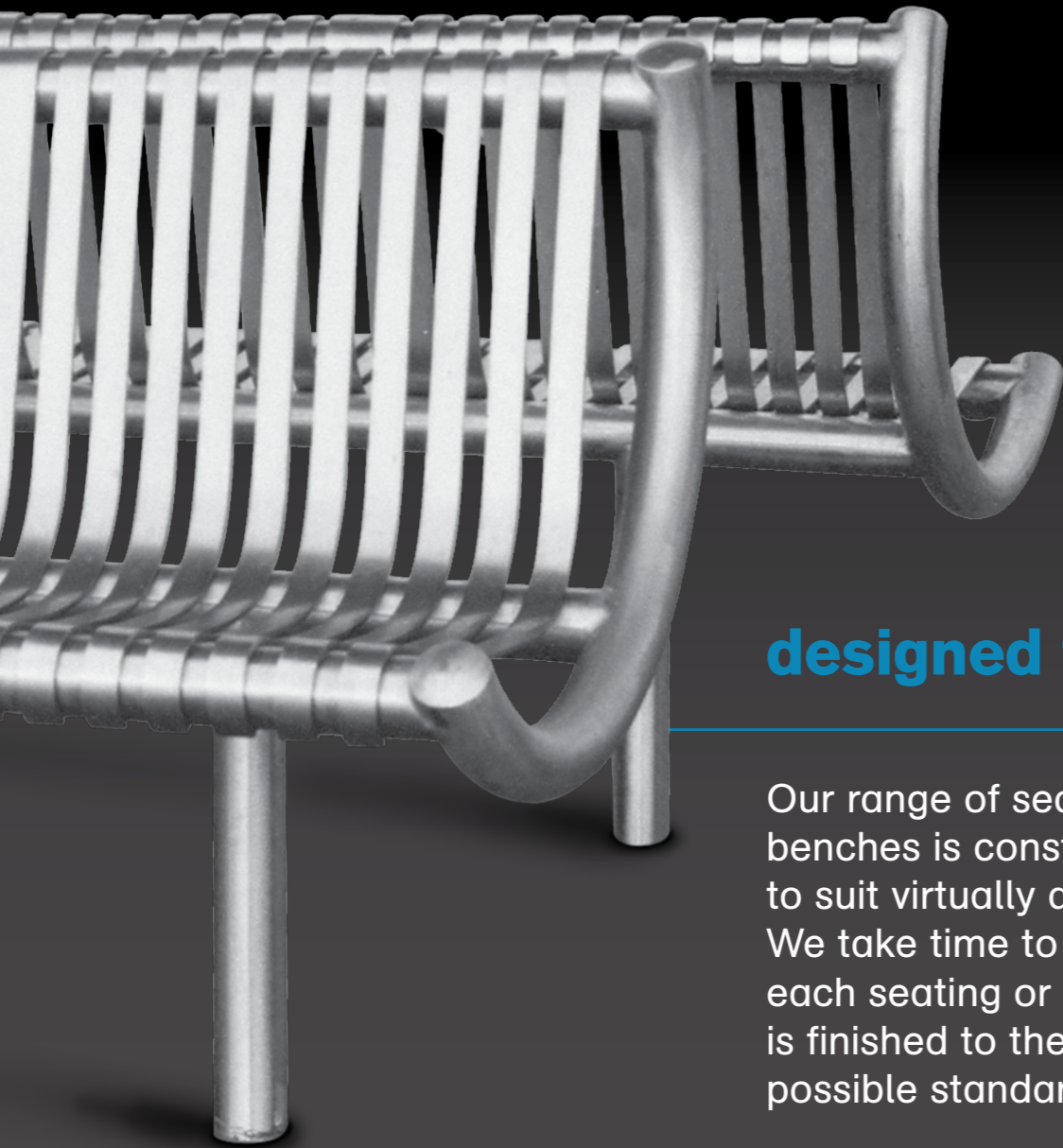
### Science Bin

With a 45 litre capacity this is our most popular bin. It has featured in a number of urban regeneration and new-build projects.

With a stylish design and tapered body, a twin-lock rear door secures the liner whilst the top and base are in 3mm thick material to withstand even persistent vandalism.

The base is four times drilled for bolting into concrete and the standard finish is satin polish. The Science Bin is also available with an ashtray and cigarette stub.

**PROMENADE SEAT**  
AS INSTALLED IN BLACKPOOL



## designed to last

Our range of seats and perch benches is constructed to suit virtually any environment. We take time to ensure that each seating or bench product is finished to the highest possible standard.

By choosing Steel Line's range of seating, you are making a one-off investment that will remain functional and appealing for years to come.



## SEATS & BENCHES

### Metro Seating Range

Our beautifully constructed Metro products are designed to give you the best of both worlds: Bespoke designs offering comfort, and rugged construction that will remain impervious to corrosion, graffiti and vandalism.

Smooth welds and highly polished surfaces that resist even the most sustained abuse are just two of the design elements that set our products apart. Due to its rugged construction, Metro is a popular railway station platform product currently used by East Coast Main Line and Nexus and also under consideration for several other schemes. It is a tried and tested product range.

See website [www.metroandstandup.co.uk](http://www.metroandstandup.co.uk)

### Marine Seat and Bench

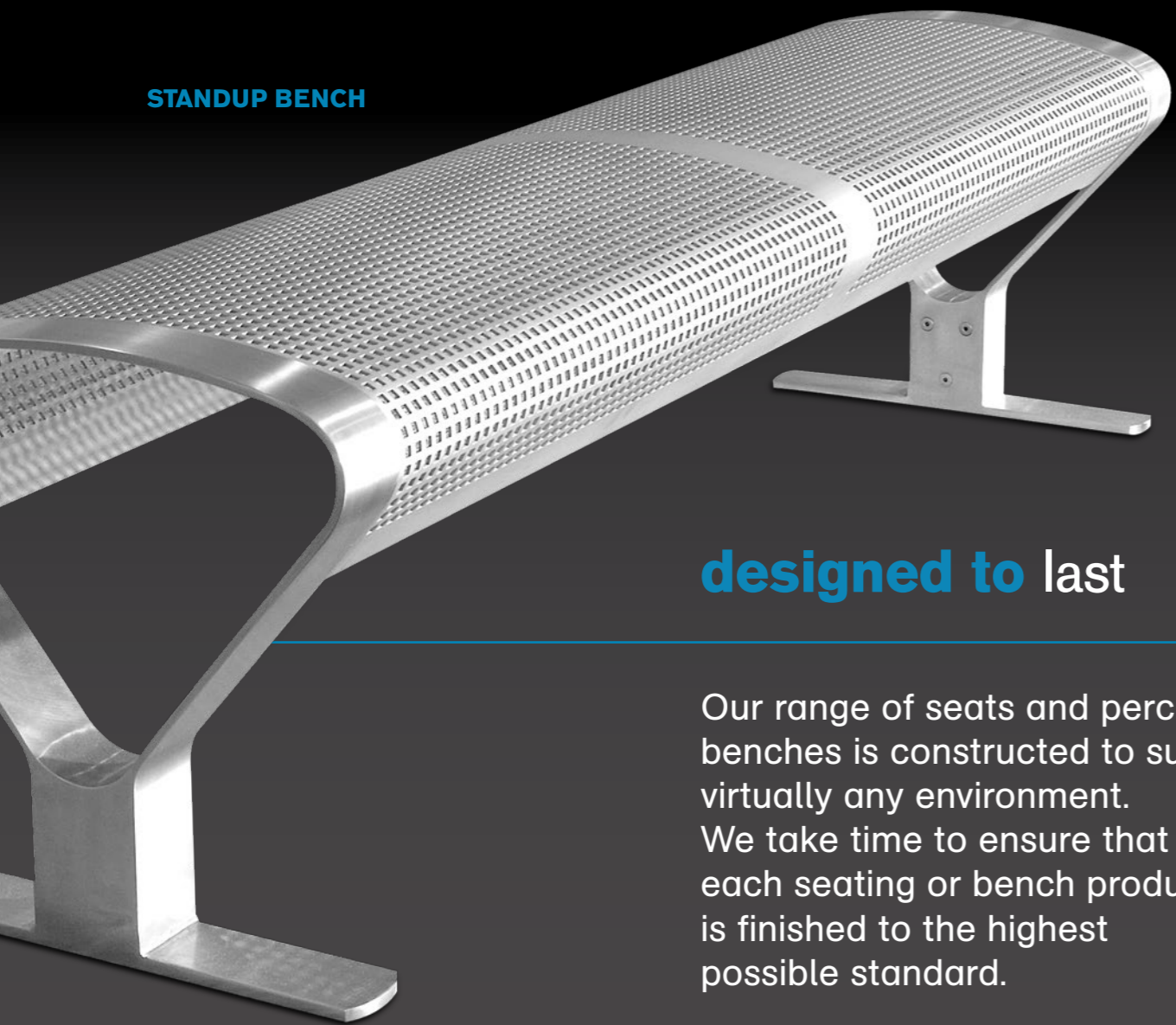
The Marine has a 48 dia tubular framework with flat bar infill rails providing a smooth seating surface.

Armrests are optional and can be welded centrally or at the ends as required.

The Marine is a budget product offering stainless steel seating at a very competitive price.

Curved versions are available (see overleaf).

STANDUP BENCH



**designed to last**

Our range of seats and perch benches is constructed to suit virtually any environment. We take time to ensure that each seating or bench product is finished to the highest possible standard.

By choosing Steel Line's range of seating, you are making a one-off investment that will remain functional and appealing for years to come.



## SEATS & BENCHES

### Standup Seating Range

The refined construction of our Standup products is designed to give you the best of both worlds: unique designs offering comfort, and rugged construction that will remain resistant to corrosion, graffiti and vandalism.

Hidden welds and highly polished surfaces that resist even the most sustained abuse are just two of the design elements that set our products apart. We have the ability to design, produce and install our seating items in a timely and efficient manner, with a proven track record in providing urban seating for public realm projects throughout the UK.

See website [www.metroandstandup.co.uk](http://www.metroandstandup.co.uk)

### Promenade Seat and Bench

The Promenade is aptly named due to the large quantity installed on Blackpool's south promenade. The design utilises a 60mm dia tubular framework and the flat bar infills are broken up with two wider feature straps.

Curved versions are available as shown above.



## civic enhancement

Steel Line produce post and hoop sign frames including large base posts (LBPs). They can be supplied with backing plates and the actual sign required or just simply with lugs for the client to provide his own sign details. A few of our most recent installations are shown on this page.



## SIGNAGE

### Road Signage Hoop and Post Signs

The company manufacture a wide range of stainless steel hoops and posts used for road signs, country parks and public realm in a variety of designs and tube diameters. The posts can also be used for lighting columns and up-market traffic lights mounted on cranked posts. Normal installation is a submerged fix but some of the smaller items can be bolted to concrete foundations.

### Fingerposts

This is a longstanding method of wayfinding around town centres and seaside promenades. Traditionally the first types were made in cast iron but over the years the style and material used has been selected to blend in with the environment. Increasingly stainless steel and aluminium are being selected for contemporary street and sea scapes. Steel Line manufacture both types with a choice of etching solid fingers as shown above or sandwiching a coloured plate between two plates with laser cut letters.

The fingers can be fixed or made with adjustable collars, so old ones can be replaced with new ones as a town or city centre regenerates.



**exceptional** craftsmanship

Along with mainstream street furniture, Steel Line is able to offer a range of stainless steel planters that can be used to spruce up urban landscapes.

They can also be used for restricting vehicular access within pedestrian areas either permanently or temporarily.



## PLANTERS

### Circular Planters

Our circular stainless steel planters are made from stainless sheet or tubular construction to the client's specific dimensions.

The main body is on a short plinth with a 50mm wide safe edge round the top perimeter whilst the standard finish is either satin or bright polish in both S304 and S316 stainless steel grades.

### Rectangular Planters

Our rectangular stainless steel planters are not offered in any standard sizes; but made to order against client's specific dimensional requirements.

Steel Line's designs put the main body on a plinth with a 50mm wide safe edge round the top perimeter, whilst the standard finish is either satin or bright polish in both S304 and S316 stainless steel grades.



CARDINAL PLACE, VICTORIA, LONDON



POST SOCKET

INFILL WHEN POST REMOVED

## relaxing **ambience**

Steel Line's alfresco screens are solidly secured into ground sockets giving the seated clients security and some privacy. When the sockets are removed an infill tube is dropped in to avoid any trip hazard for the general public. We also produce posts with heavy baseplates which can be moved around in more flexible locations. Screens are usually supplied by the client, but Steel Line can also include these if requested.

## ALFRESCO SCREENS

### Static Screens

The static position stainless steel posts are secured into the ground socket by twisting the post into a slot. The reverse operation removes the post and an infill is twisted into position in its place.

The 89mm dia uprights are in a satin polish finish and the top and bottom cross tubes which slide through loops in the material connect with the post lugs by safety hooks (see photo). The screens are quickly assembled and demounted at closing time.

### Movable Screens

Baseplated posts are manufactured when the location is flexible and the screens can be positioned in different formats. These are weighted mild steel but clad with stainless to maintain the uniformity of finish for the installation.



**RAMP AND BALUSTRADE TO FOOTBRIDGE –  
M20 JUNCTION 9**



## GENERAL

Steel Line is often approached to manufacture bespoke fabrications, including client's own design products.

Here on this page we illustrate some of these items that have been produced in recent times. As well as stainless steel, the company fabricates brass and bronze metalwork.

The Sheffield City Centre products which feature throughout these pages were all designed and engineered in collaboration with the City council's appointed artist/designer.



**WYTHENSHAW HOSPITAL OBELISK**



**HANDRAIL TO GRANITE SEATS**



**TROLLEY PARKS**