

PLACE LANE TIME

| | | | | |
|---------|----|----|----|----|
| Ω OMEGA | 00 | 00 | 00 | 00 |
| Ω OMEGA | 00 | 00 | 00 | 00 |
| Ω OMEGA | 00 | 00 | 00 | 00 |
| Ω OMEGA | 00 | 00 | 00 | 00 |
| Ω OMEGA | 00 | 00 | 00 | 00 |
| Ω OMEGA | 00 | 00 | 00 | 00 |

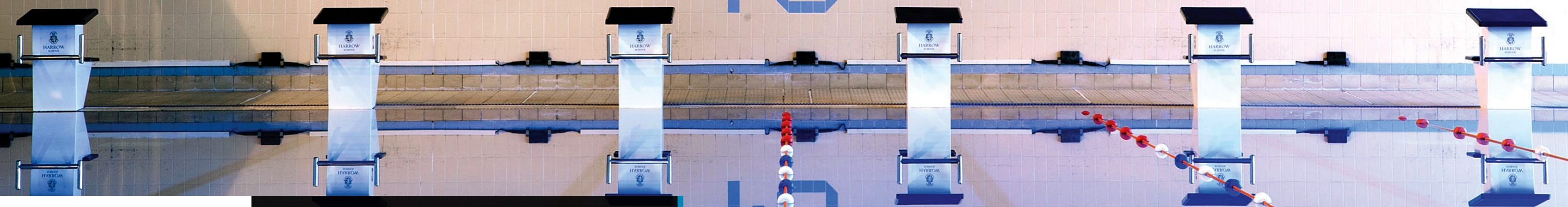
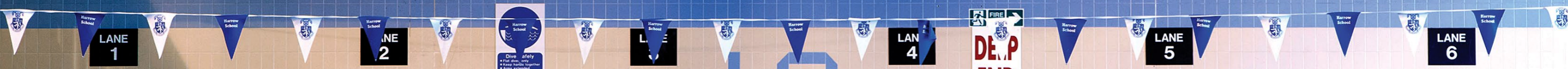




STEEL LINE

swimming pool

15:32

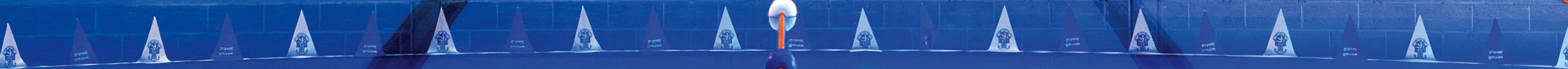
Waterfly

148455

Steel Line Ltd
415 Petre Street
Sheffield
South Yorkshire
S4 8LL

t +44 (0) 114 231 7330
f +44 (0) 114 256 0330
colin.campbell@steelline.co.uk



swimming pool



STEEL LINE



STRUCTURAL GLAZED BALUSTRADE TO SEATING AREA



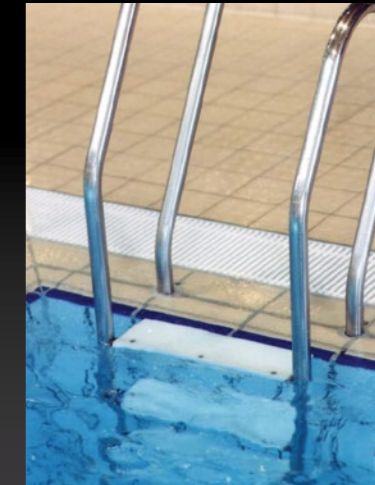
METALWORK



COMPETITION EQUIPMENT



LIFE SAVING EQUIPMENT



ACCESS



FIXINGS

INTRODUCTION

**Steel Line Stainless Steel products:
Expertly crafted to work in harmony
with the urban environment.**

Steel Line has been fitting out swimming pools, leisure centres and health clubs for over 20 years. Their expertise in fabricating stainless steel pool hall metalwork, access stairs with balustrades and handrails, together with competition equipment to UK and international standards, is unrivalled in the industry.

Due to the aggressive environment in pool halls exacerbated by chlorine and ozones in the atmosphere, only mirror polished S316L marine grade stainless steel is used for our products.

The mirror polish finish gives the best resistance to contamination and is easily cleaned. A cleaning and maintenance regime is provided by the company.



elegant design

Steel Line is the ideal partner to manufacture and install all the handrails, balustrades and architectural metalwork, including external street furniture for a new or refurbished leisure centre.



POOL HALL METALWORK

Handrail to Post and Glass Connections

A typical balustrade design with glass infill panels used on staircases and around staircase voids in leisure centres. This is a common feature in swimming pool halls and is polished to a smooth satin finish.

Lean Bar

We can also offer an additional design option to the upper floor spectator seating area. Slightly tiered above the seating, there are standing areas for “leaning” on.

Spectator Seating Balustrade

Our balustrades can either be a post and infill design where the seating area is on a raised platform at ground floor level in the pool hall or an upper floor installation with a structural glazed balustrade; usually with 48/60mm diameter rebated tube as a capping.

Infill and structured glass panels are ideal in this environment as they are so easy to keep clean.



aesthetically robust

Over 35 years manufacturing experience in stainless steel metalwork means our products are crafted and polished to an immaculate mirror finish. Any stainless steel barrier rails, step handrails or bespoke items required together with mild steel staircases can also be manufactured.



POOL HALL METALWORK

Pool Steps Handrail

Generally manufactured in 38/42mm dia tube these are tailor made to suit the pool design and as an option to the disabled/elderly stainless steel steps shown in the Access section.

The gently sloping rail also assists young children entering the water and the design is particularly popular in learner pools.

Pool Barrier Rails

Generally manufactured using 42/48mm dia tube they are usually produced with stainless steel infill bars or glass panels.

They are positioned in locations requiring user separation, for example main and learner pools and are particularly useful outside changing room entrances to stop anyone running out and jumping straight into the pool.



COMPETITION EQUIPMENT

Stay Ahead of the Game

A full range of competition equipment is manufactured at our Sheffield factory. Our Olympic-standard adjustable footrest starting blocks were introduced in 2013 to supplement the existing range of ASA blocks. These are produced with tube frame or pedestal supports.

Racing lane line trolleys in various sizes, false start and backstroke warning sets (including posts and installation sockets), together with all the necessary fixings for the starter blocks and lane lines are also manufactured and displayed on the following pages.

STARTING BLOCKS

Starting Blocks | In Detail



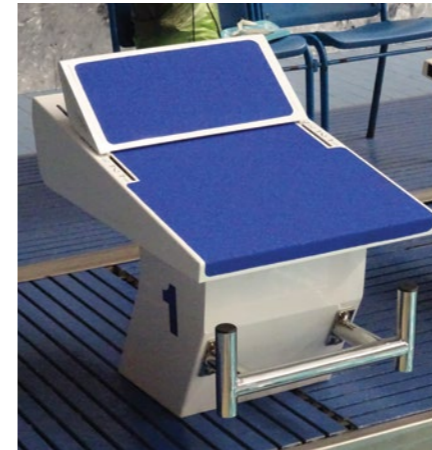
Olympic Standard Adjustable Footrest Starting Block/Hanging Backstroke Bar

Top manufactured from stainless steel sheet with slots at either side for adjustment of the footrest into 5 positions.

The top is powder-coated with blue non-slip fabric glued to the front and footrest. Support pedestal also powder-coated white with 38mm hanging backstroke bar. The pedestal front is perforated with internal bracket for a speaker whilst the top is suitable for fitting a relay judging platform timing systems. Large numbers on 3 sides. Supplied separately with 4nr M10 fixings for securing through an internal flange.

Dimensions

- 750mm Length
- 500mm Width
- 400mm Height



Olympic Standard Adjustable Footrest Starting Block/Front Fixed Backstroke Bar

Top manufactured from stainless steel sheet with slots at either side for adjustment of the footrest into 5 positions.

The top is powder-coated with blue non-slip fabric glued to the front and footrest. Support pedestal also powder-coated white with 38mm front fixed backstroke bar. The pedestal front is perforated with internal bracket for speaker whilst the top is suitable for fitting relay judging platform timing systems. Large numbers on 3 sides. Supplied separately with 4nr M10 fixings for securing through an internal flange.

Dimensions

- 750mm Length
- 500mm Width
- 400mm Height



Deck Level Adjustable Footrest Starting Block/Tube Frame

Top manufactured from stainless steel sheet with slots at either side for adjustment of the footrest into 5 positions.

The top is powder-coated with blue non-slip fabric glued to the front and footrest. Support frame and backstroke bar in mirror polished 38mm dia tube. Bottom cross straps positioned to suit pool edge (deck level) or line up with existing fixing positions, thereby avoiding the need to re-drill the edge tiles.

Dimensions

- 750mm Length
- 485mm Width
- 600mm Height

STARTING BLOCKS

Starting Blocks | In Detail

superb products



Standard/Freeboard Adjustable Footrest Starting Block Tube Frame

Top manufactured from stainless steel sheet with slots at either side for adjustment of the footrest in 5 positions. Top powder-coated white with blue non-slip fabric glued to the front and footrest. Support frame and backstroke bar in mirror polished 38mm dia tube. Bottom cross strap positioned to suit pool edge (freeboard) or to line up with existing fixing position thereby avoiding the need to re-drill the edge tiles.

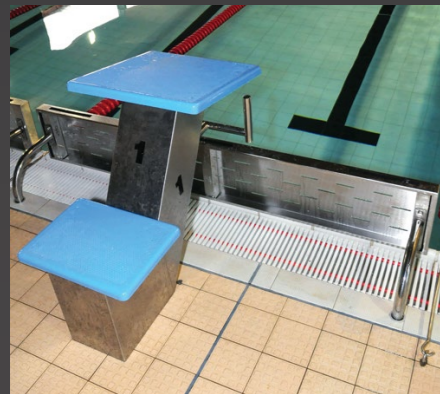
Dimensions • 750mm Length • 485mm Width • 400mm Height



European Standard Deck Level Starting Block

Manufactured from stainless steel, consisting of a fabricated sheet body with a satin polish or powder-coated finish (standard colour). The pedestal is 700mm high. After removing the top, the block is secured into M10 holdfasts through an internal base flange using screwed eyebolts. Turning boards can be supplied GRP clad with an inner stainless steel frame or produced in S316 grade stainless steel throughout. They can be secured to the pool edge through pinch sockets or fixed back to the pedestal itself by turning board bracket.

Dimensions • 700mm Length • 500mm Width • 700mm Height



European Standard Turning Board

Manufactured in glass reinforced plastic clad onto a stainless steel frame or completely fabricated in stainless steel and fixed to the pool edge by tubular brackets. The board is then secured into pinch sockets or fixed back to the pedestal by a turning board bracket.

Dimensions • 2400mm Length • 60mm Width • 300mm Height



Standard and Deck Level Starting Block with Turning Board and Bracket

The ASA 'family' of Standard and Deck Level starting blocks complete with Turning Board and Bracket. Staple products for competition pools until the introduction of the Footrest/Trackstart Block.



ASA Deck Level 500 Starting Block

Designed to meet the needs of the ASA competitive start award and also meet the minimum height requirement under FINA F2.7 Starting Platforms. 38mm tubular framework with white glass fibre anti-slip top. Other colours are available.

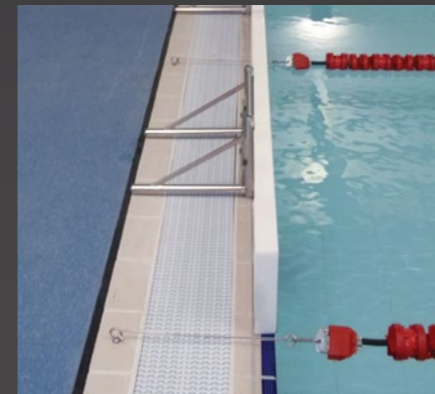
Dimensions • 590mm Length • 455mm Width • 500mm Height



ASA Freeboard 500 Starting Block

Designed for freeboard pools with a maximum of up to 250mm distance from the pool edge to water level. The height of the block is determined by this distance to make an overall height of 500mm. 38mm tubular framework with white glass fibre anti-slip top. Other colours are available.

Dimensions • 538mm Length • 455mm Width • Variable Height



Turning Board Bracket For Deck Level Pools

Turning board brackets complete with boards are installed at the opposite end of the starting positions in deck level pools.

To hold turning boards in a deck level pool. 38mm tubular stainless steel framework with 2 holdfast positions for securing to the pool edge.

Dimensions • 400mm Length • 485mm Width • 280mm Height



Stainless Steel Turning Board

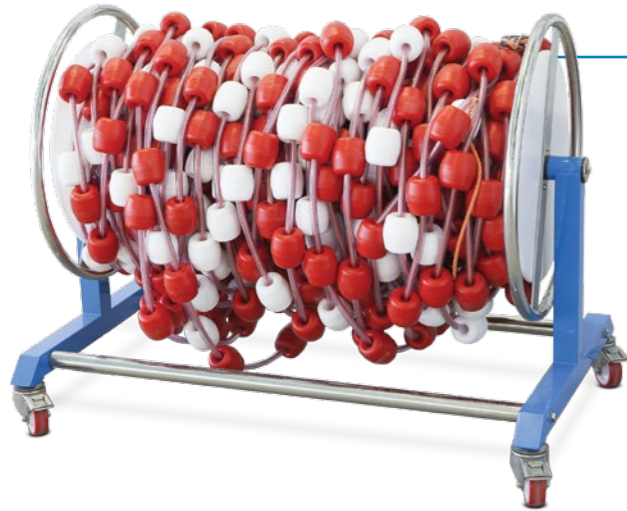
As an option to the standard glass reinforced plastic design. Exactly same dimensions with a patterned front panel.

Dimensions • 1900mm Length • 60mm Width • 300mm Height

COMPETITION EQUIPMENT

Competition Equipment | In Detail

timeless simplicity



Training Lane Trolley

Manufactured in 25mm and 38mm dia mirror polished tube to hold 5 x 25m of training lanes with floats. Bottom frame powder-coated blue.

950L x 700W x 900H mounted on castors (2 braked).

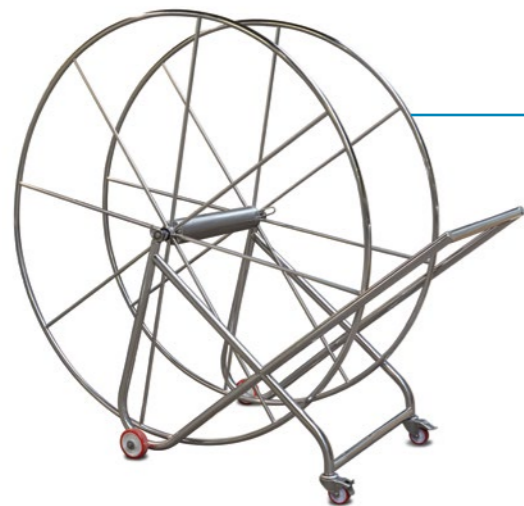


Racing Lane Trolley Standard and Jumbo

Manufactured in 25mm and 38mm dia mirror polished tube with central 101 dia tube to carry 4" and 6" liner.

Will hold 3 x 25m of 6" lines and 5 x 25m of 4" lines. 1720L x 1250W x 1430H. Bottom frame powder-coated blue and mounted on stainless braked castors with non-marking treads.

There is a Jumbo version of this trolley which accepts 5 x 25m of 6" lines and 8 x 25m of 4" lines. 2460L x 1270W x 1524H.



Narrow System Reel and Trolley and Heavy Duty Carrier

Manufactured in 25mm and 38mm dia mirror polished tube. Each standard reel holds 50m of 4" lines or 25m of 6". 485W x 1290 dia.

Heavy duty holds 50m of 6" lines 485W x 1750 dia. Trolley width is 725W.

The system is designed to operate in limited access situations with single door apertures. You can have as many single reels as is practical and one trolley to manoeuvre them.



Backstroke Warning Set

Consists of 4 nr 38mm dia x 2000L poles with loops and 2 sets of bunting which varies according to the pool width.

Complete with 4 open sockets and infills. Can be ordered complete or individual parts as required.



False Start

Consists of 2 nr 38mm dia x 2000L poles with loops, 2 open sockets and infills, and a length of 12mm dia rope. It requires two operators.

Can also be supplied as a semi-automatic system requiring one operator.



Water Polo Goals

Set of two for a 25m pool, consisting of deep and shallow end for fixing into pool surround.

38mm dia folding tubular frame (for ease of storage) with white plastic goalposts to international requirements. Complete with nets.

refined quality

LIFE SAVING EQUIPMENT

A number of poolhall options for lifeguard stations are available in tubular stainless steel construction with plastic chairs.

The pool edge chair offers uninterrupted views over the complete water surface with the back legs being secured into holdfasts. Steel Line has been producing lifeguard chairs for more than 20 years.



Pool Edge Lifeguard Chair

Manufactured in 38mm dia mirror polished stainless steel tube, the floor fixed chairs are designed to be installed as close to the pool edge as possible so the lifeguard has complete visibility to all areas of the pool.

The floor fixed chair is 1175W x 565D x 2110H with ladder access from either side and the plastic seat position 1875mm from floor level. A narrow grab rail is welded to the front frame to provide a standing position for the lifeguard. The platform area is covered with non-slip blue surface. Two hooks are provided for safety/rescue equipment. Two brackets are provided on the rear legs for securing into floor fixed holdfasts with screwed eyebolts which are supplied with the chair.



Pedestal Lifeguard Chair

Manufactured with a 89mm dia x 3mm wall mirror polished pillar on a base plate 4 x drilled for M12 studding. Side mounted/dismount by anti-slip rigidised stainless steel treads welded to 38mm dia stringers. Platform fabricated with hollow section frame and stainless steel sheet clad with blue non-slip material. Plastic swivel chair bolted to top of tube. 750W x 1000D x 2100H.

Small Lifeguard Chair

Manufactured in 38mm dia mirror polished tube, this chair is accessed by 2 front steps. It is free standing and is therefore positioned as near to the pool edge as is safe and practical. The chair is 560W at front x 850 at the back, 1000D and 1300H. The plastic seat position is 1050H.



Standard Lifeguard Chair

Manufactured in 38mm dia mirror polished tube, this chair is accessed by the front ladder. It is free standing and is therefore positioned as near to the pool edge as is safe and practical. The chair is 560W at front x 850 at the rear, 1200D and 2000H. The plastic seat position is 1750H.

Wall Mounted Chair

Manufactured in 38mm dia mirror polished tube, this chair has drilled flanges for fixing to the floor and wall and is accessed by a front ladder. The chair is 560W front and back x 1220D and 2750H. The plastic seat position is 2500H.





ACCESS

Steel Line manufactures a comprehensive range of stainless steel ladders and steps to aid entering and leaving the pool.

For built-in steps there are a number of functional, yet occasionally artistic grabrail designs selected by architects to enhance the cosmetic finish of the pool hall.

Ladder treads are offered in anti-slip patterned stainless steel or in machined plastic and both are fully welded to the stringers.



Swimming Pool Access Ladders

A range of ladders for deck level and freeboard pools is manufactured in 38, 42 and 48mm stainless steel tube with 2-6 treads as a standard.

Bespoke ladders are manufactured for special applications such as survival training pools.



Grab Rails With Built-In Stainless Steel Steps

Especially used in pools with movable floors, these steps are manufactured from S316 stainless steel rigidised anti-slip sheet with a mirror/bright polished finish.

Designed to flush fit within the recess leaving no gaps for user entrapment.

Mainly for new builds, these steps provide a cost conscious solution to casting concrete recesses with steps, which then need time consuming tiling.

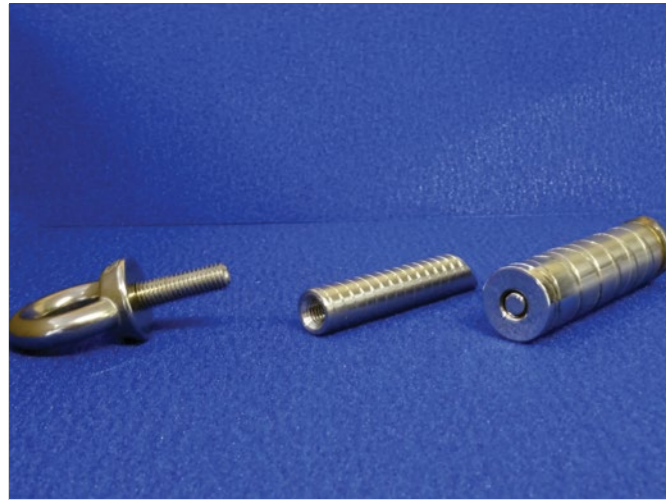
The steps do not need to be removed whilst operating the moving floor, and are complemented with 'P' shaped grab rails, leaving plenty of room for the pool cover to operate without any obstacles.



Disabled/Elderly Access Steps

Manufactured in 38mm stainless steel tube with either rigidised metal or plastic grooved treads. Two widths are available either 490 or 960mm. The ladder height depends on the depth of the shallow end of the pool.

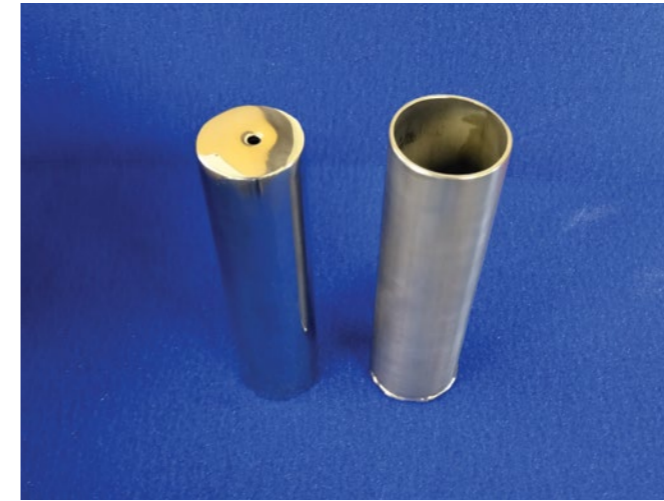
There are specific tolerances for the tread spacing which are determined by the depth of the shallow end. Dry side, the two rear legs are dropped into open sockets and the steps can therefore be easily removed as required.



Standard and Springloaded Holdfasts with Eyebolt Fixing

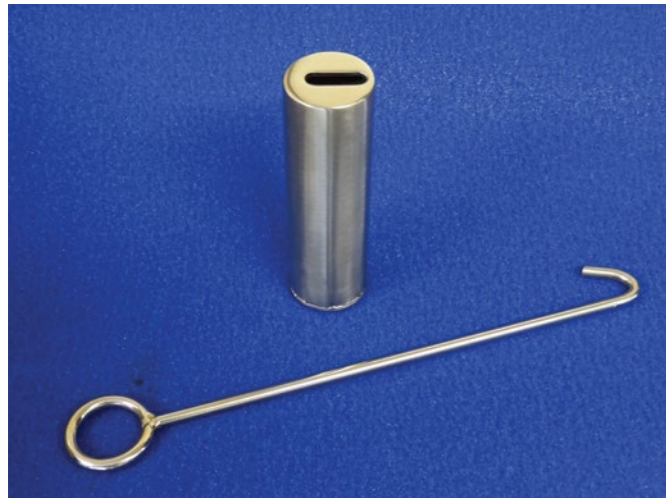
Versatile fixing system which can be used for starting blocks, turning boards and lane lines. Generally M10 size. Holdfasts are grouted into pool wall/floor and the eyebolt secures the product/lane line hook.

The springloaded cover variant covers the hole instead of a screw fixing.



Open Socket with Infill

For 38mm or 48mm diameter tube. Generally used for backstroke warning poles with flags and false start sets. The backstroke set requires 4 poles and the false start 2.



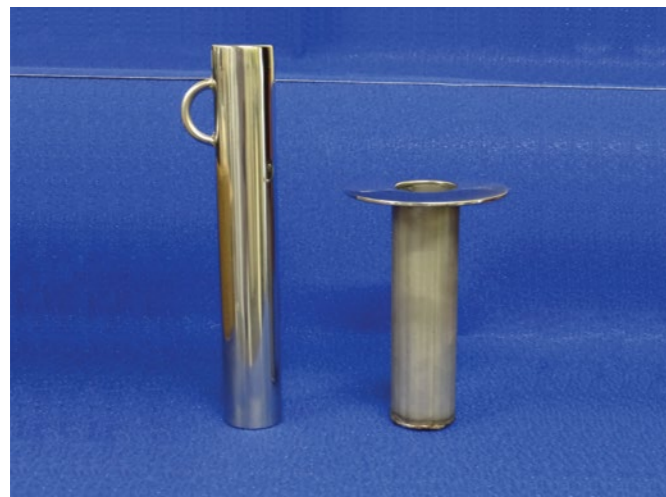
Slotted Socket with Lane Line Hook Adapter

An alternative to holdfast and the lane line post. The 38mm dia socket can be left permanently poolside and the hook adapter filled when the lanes are being sent out.



Pinch Socket with Fixing and Infill

Pinch sockets are used for access ladders and built-in steps grabrail installations for 38mm and 42mm dia tube. The screw fixing in the socket means the ladder/grabrail leg can be secured without fear of being pulled out when someone leaves the pool.



Post Lane Line Fixing with Flanged Socket

38mm dia tube fixing for 4" or 6" lane lines to hook onto. The flanged socket gives a neat/cosmetic appearance to the installation.