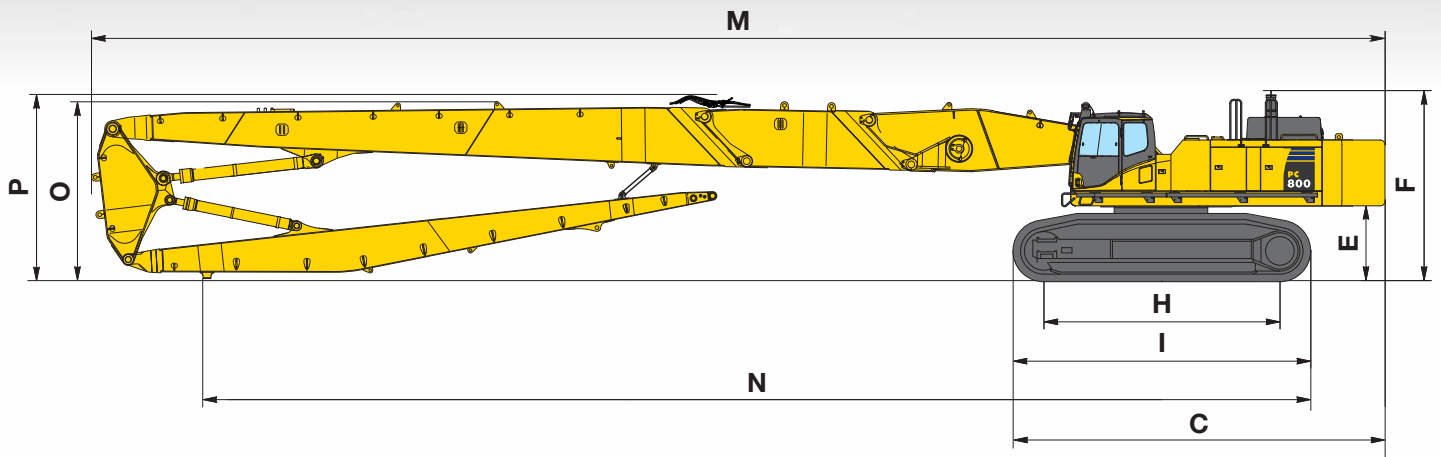


# KOMATSU



## Hydraulic Excavator **PC800LC-8** High Reach Demolition Specification

ENGINE POWER  
370 kW / 496 HP @ 1.800 rpm

OPERATING WEIGHT  
89.470 - 106.065 kg

ATTACHMENT TOOL WEIGHT  
max. 2.400 kg

# Specifications

## ENGINE

Model ..... Komatsu SAA6D140E-5  
 Type..... Common rail direct injection, water-cooled,  
 cooled EGR, turbocharged, after-cooled diesel  
 Engine power  
 at rated engine speed ..... 1.800 rpm  
 ISO 14396 .....370 kW / 496 HP  
 ISO 9249 (net engine power) .....363 kW / 487 HP  
 No. of cylinders ..... 6  
 Bore x stroke.....140 x 165 mm  
 Displacement..... 15,24 ltr  
 Fan drive type.....Hydraulic

## HYDRAULIC SYSTEM

Type ..... Open-center load-sensing system  
 Additional circuits ..... Additional hydraulic function,  
 2 double acting circuits plus 1 drain line  
 Number of selectable working modes ..... 2  
 Main pump ..... Variable capacity piston pump  
 Pumps for ..... Boom, arm, bucket, swing, and travel circuits  
 Maximum pump flow..... 2 x 494 ltr/min  
 Fan drive pump ..... Variable capacity piston pump  
 Attachment rotate/cab tilt pump ..... Fixed displacement gear pump  
 Hydraulic motors:  
 Travel..... 2 x axial piston motor with parking brake  
 Swing ..... 2 x axial piston motor with swing holding brake  
 Relief valve settings  
 Implement circuits .....320 bar  
 Travel circuit .....350 bar  
 Swing circuit .....290 bar  
 Heavy lift circuit .....350 bar  
 Pilot circuit .....30 bar

## UNDERCARRIAGE

Construction ..... Hydraulically assisted variable undercarriage  
 Track assembly  
 Type ..... Fully sealed  
 Shoes (each side) ..... 51  
 Tension.....Hydraulic  
 Rollers  
 Track rollers (each side) ..... 9  
 Carrier rollers (each side) ..... 3

## OPERATING WEIGHT (APPR.)

Triple grouser shoes	HIGH REACH		MEDIUM REACH		EXCAVATION BOOM	
	Operating Weight	Ground pressure	Operating Weight	Ground pressure	Operating Weight	Ground pressure
610 mm	105.425 kg	1,57 kg/cm <sup>2</sup>	102.120 kg	1,52 kg/cm <sup>2</sup>	89.470 kg	1,33 kg/cm <sup>2</sup>
710 mm	106.065 kg	1,36 kg/cm <sup>2</sup>	102.760 kg	1,32 kg/cm <sup>2</sup>	90.110 kg	1,15 kg/cm <sup>2</sup>

Operating weight, including specified work equipment. High reach and medium reach includes attachment weight of 2.400 kg. Excavation boom equipment includes 3,6 m arm and 3.575 kg bucket. All include operator, lubricant, coolant, full fuel tank.

## SWING SYSTEM

Type ..... Hydraulic motor  
 Swing reduction ..... Planetary gear  
 Swing circle lubrication ..... Grease-bathed  
 Swing lock ..... Oil disc brake  
 Swing speed (excavation boom) ..... 6,8 rpm  
 Swing speed (high reach boom) ..... 2,1 rpm

## DRIVES AND BRAKES

Steering control ..... 2 levers with pedals  
 Drive method ..... Fully hydrostatic  
 Travel motor ..... Axial piston motor, in-shoe design  
 Reduction system ..... Planetary double reduction  
 Max. drawbar pull ..... 57.000 kg  
 Gradeability ..... 70%  
 Max. travel speeds  
 Lo / Hi ..... 2,8 / 4,2 km/h  
 Service brake ..... Hydraulic lock  
 Parking brake ..... Oil disc brake

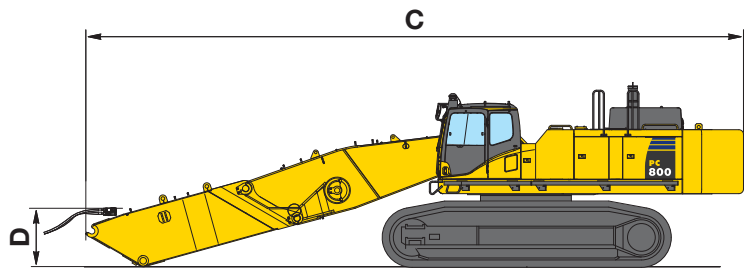
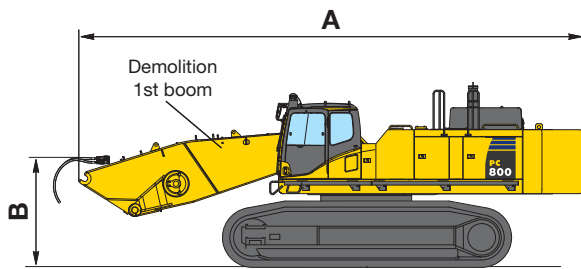
## SERVICE REFILL CAPACITIES

Fuel tank ..... 980 ltr  
 Radiator ..... 100 ltr  
 Engine oil ..... 58 ltr  
 Swing drive ..... 2 x 24,5 ltr  
 Hydraulic tank ..... 470 ltr  
 Final drive (each side) ..... 20 ltr  
 PTO case ..... 6 ltr

## ENVIRONMENT

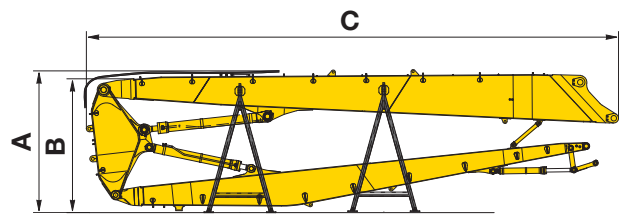
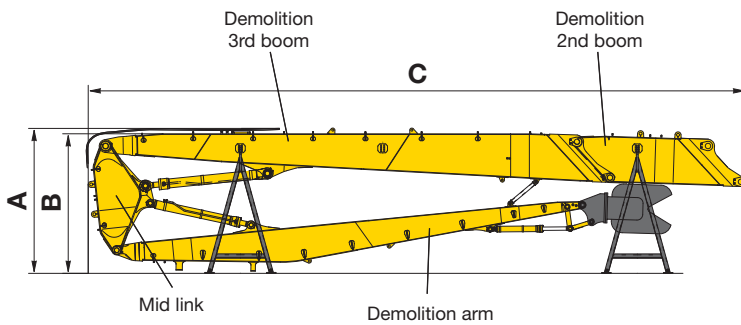
Engine emissions ..... Fully complies with EU Stage IIIA and EPA Tier III exhaust emission regulations  
 Noise levels  
 LwA external ..... 108 dB(A) (2000/14/EC Stage 2)  
 LpA operator ear ..... 73 dB(A) (ISO 6396 dynamic test)  
 Vibration levels (EN 12096:1997)\*  
 Hand/arm ..... ≤ 2,5 m/s<sup>2</sup> (uncertainty K = 0,20 m/s<sup>2</sup>)  
 Body ..... ≤ 0,5 m/s<sup>2</sup> (uncertainty K = 0,04 m/s<sup>2</sup>)  
 \* for the purpose of risk assessment under directive 2002/44/EC, please refer to ISO/TR 25398:2006.

# Transport Dimensions



## MACHINE DIMENSIONS

A	Transport length	11.070 mm
B	Maximum boom height (to top of hose)	2.395 mm
	Transport weight	75.145 kg
C	Transport length	14.405 mm
D	Maximum boom height (to top of hose)	1.270 mm
	Transport weight	78.480 kg



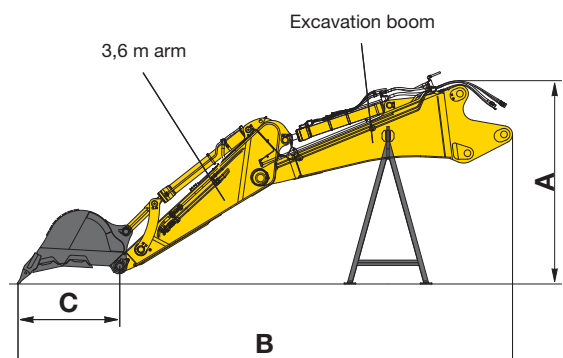
## EQUIPMENT

	HIGH REACH BOOM	MEDIUM REACH BOOM	
A	Transport height (to top of hose)	3.870 mm	3.745 mm
B	Transport height (to top of boom)	3.730 mm	3.535 mm
C	Transport length	17.560 mm	14.060 mm
	Support weight	1.050 kg	1.050 kg
	2nd boom weight	3.310 kg	-
	3rd boom weight	9.050 kg	9.050 kg
	Mid link weight	3.330 kg	3.330 kg
	Arm weight	3.985 kg	3.985 kg
	Transport weight	20.725 kg	18.500 kg

## EQUIPMENT

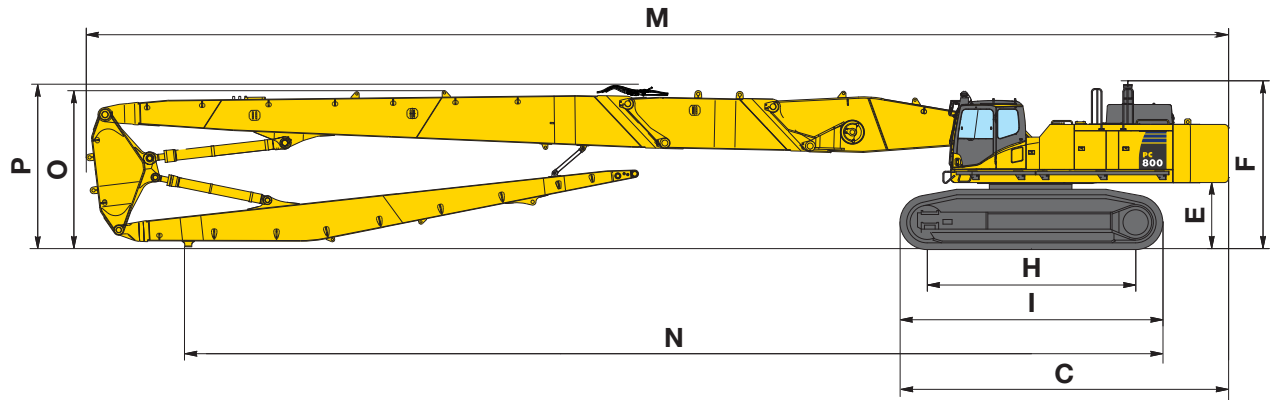
### EXCAVATION BOOM

A	Transport height (to top of hose)	4.405 mm
B	Transport length	10.715 mm
C	Tip radius	2.205 mm
	Support weight	525 kg
	Excavation boom weight	6.300 kg
	Arm weight	4.595 kg
	Bucket weight	3.575 kg
	Transport weight	14.995 kg

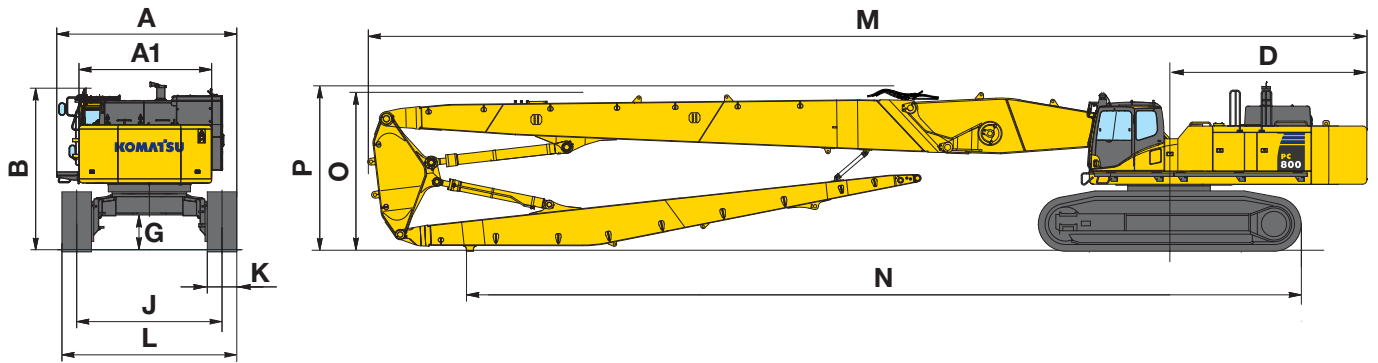


# Transport Dimensions

## HIGH REACH DEMOLITION



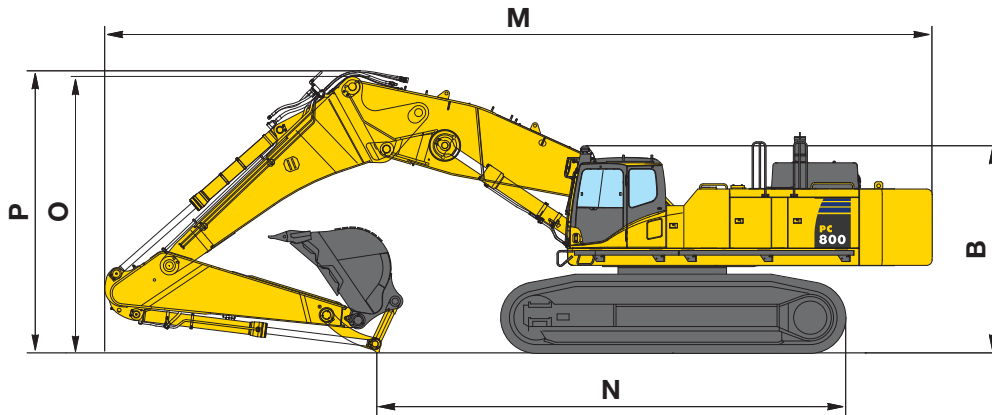
## MEDIUM REACH DEMOLITION



MACHINE DIMENSIONS		HIGH REACH	MEDIUM REACH
A	Overall width (including catwalk) <sup>1)</sup>	4.335 mm	4.335 mm
A1	Overall width of upper structure	3.195 mm	3.195 mm
B	Overall height of cab	3.795 mm	3.795 mm
C	Overall length of basic machine	7.910 mm	7.910 mm
D	Tail length	4.745 mm	4.745 mm
E	Clearance under counterweight	1.600 mm	1.600 mm
F	Machine tail height	4.040 mm	4.040 mm
G	Ground clearance	840 mm	840 mm
H	Tumbler centre distance	5.020 mm	5.020 mm
I	Track length	6.330 mm	6.330 mm
J	Track gauge <sup>2)</sup>	2.800 - 3.520 mm	2.800 - 3.520 mm
K	Track shoe width	610, 710 mm	610, 710 mm
L	Overall track width with 610 mm shoes <sup>2)</sup>	3.410 - 4.130 mm	3.410 - 4.130 mm
	Overall track width with 710 mm shoes <sup>2)</sup>	3.510 - 4.230 mm	3.510 - 4.230 mm
M	Transport length	27.510 mm	24.010 mm
N	Length on ground (transport)	23.560 mm	20.060 mm
O	Overall height (to top of boom)	3.805 mm	3.710 mm
P	Overall height (to top of hose)	3.915 mm	3.820 mm

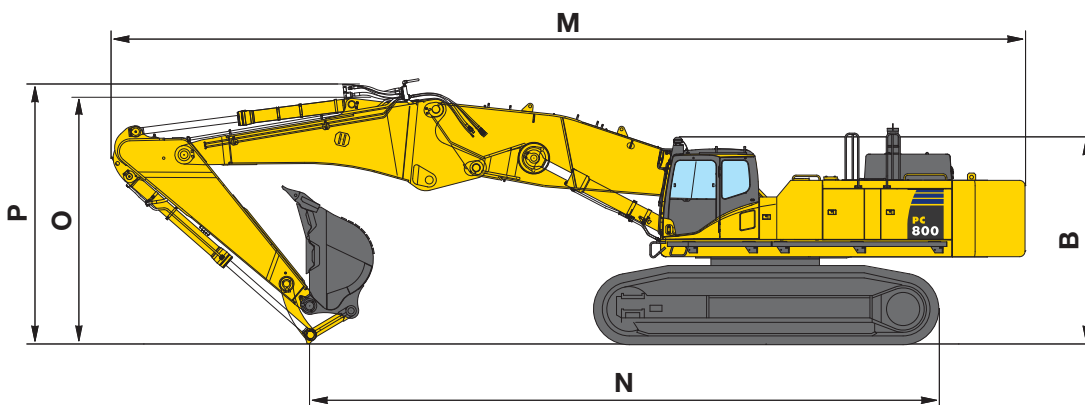
1) Overall width of upper structure excludes handrails and mirrors.  
 2) Undercarriage in retracted - extended position.

## EXCAVATION BOOM - BENT POSITION



ARM LENGTH		3,6 m
M	Overall transport length	15.160 mm
N	Transport length	8.590 mm
B	Transport height (to top of cab, with FOPS)	3.795 mm
O	Transport height (to top of boom)	5.060 mm
P	Transport height (to top of hose)	5.170 mm
Transport weight		89.470 kg

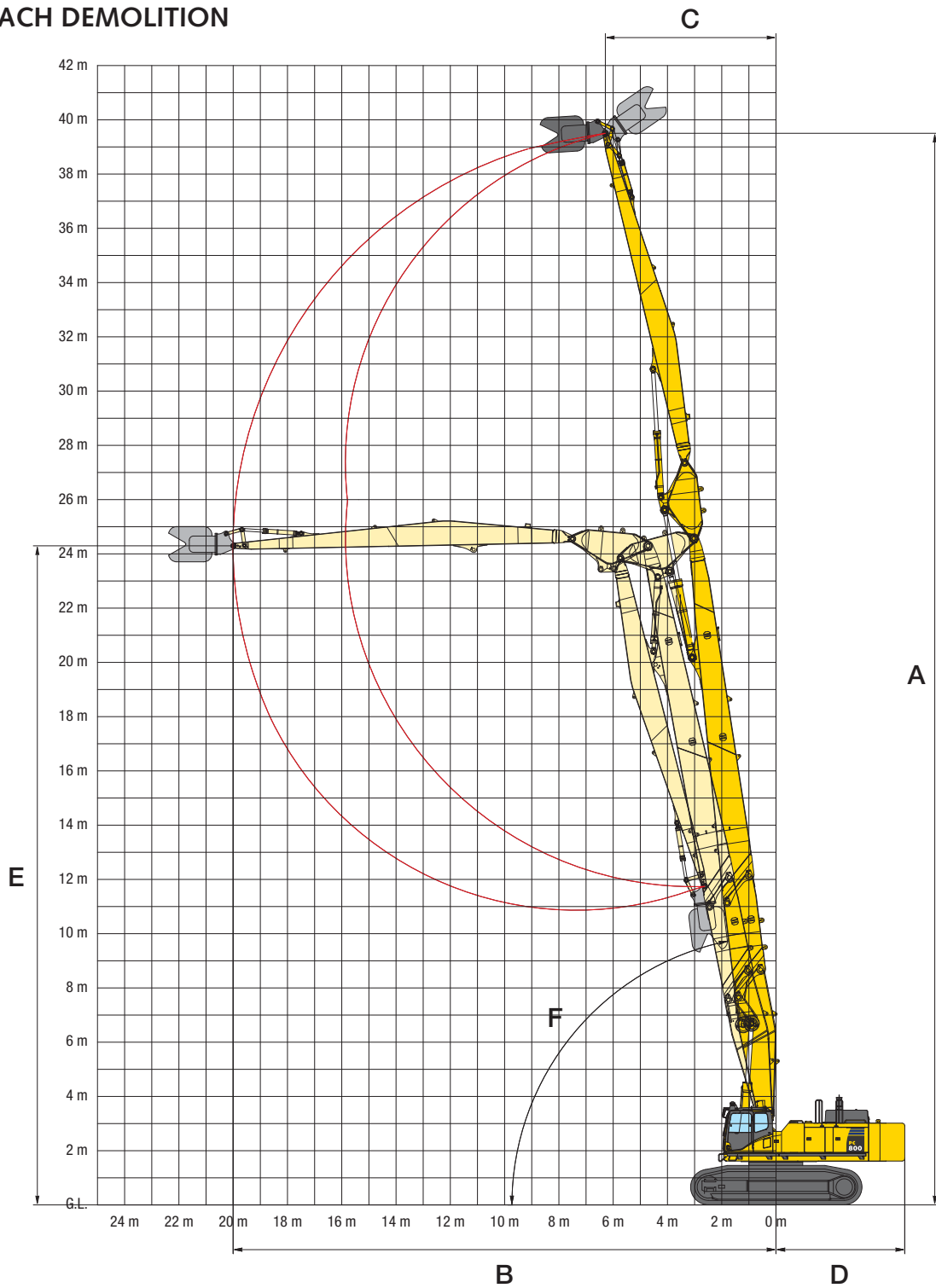
## EXCAVATION BOOM - STRAIGHT POSITION



ARM LENGTH		3,6 m
M	Overall transport length	16.760 mm
N	Transport length	11.540 mm
B	Transport height (to top of cab, with FOPS)	3.795 mm
O	Transport height (to top of boom)	4.765 mm
P	Transport height (to top of hose)	4.765 mm
Transport weight		89.470 kg

# Working Range

## HIGH REACH DEMOLITION



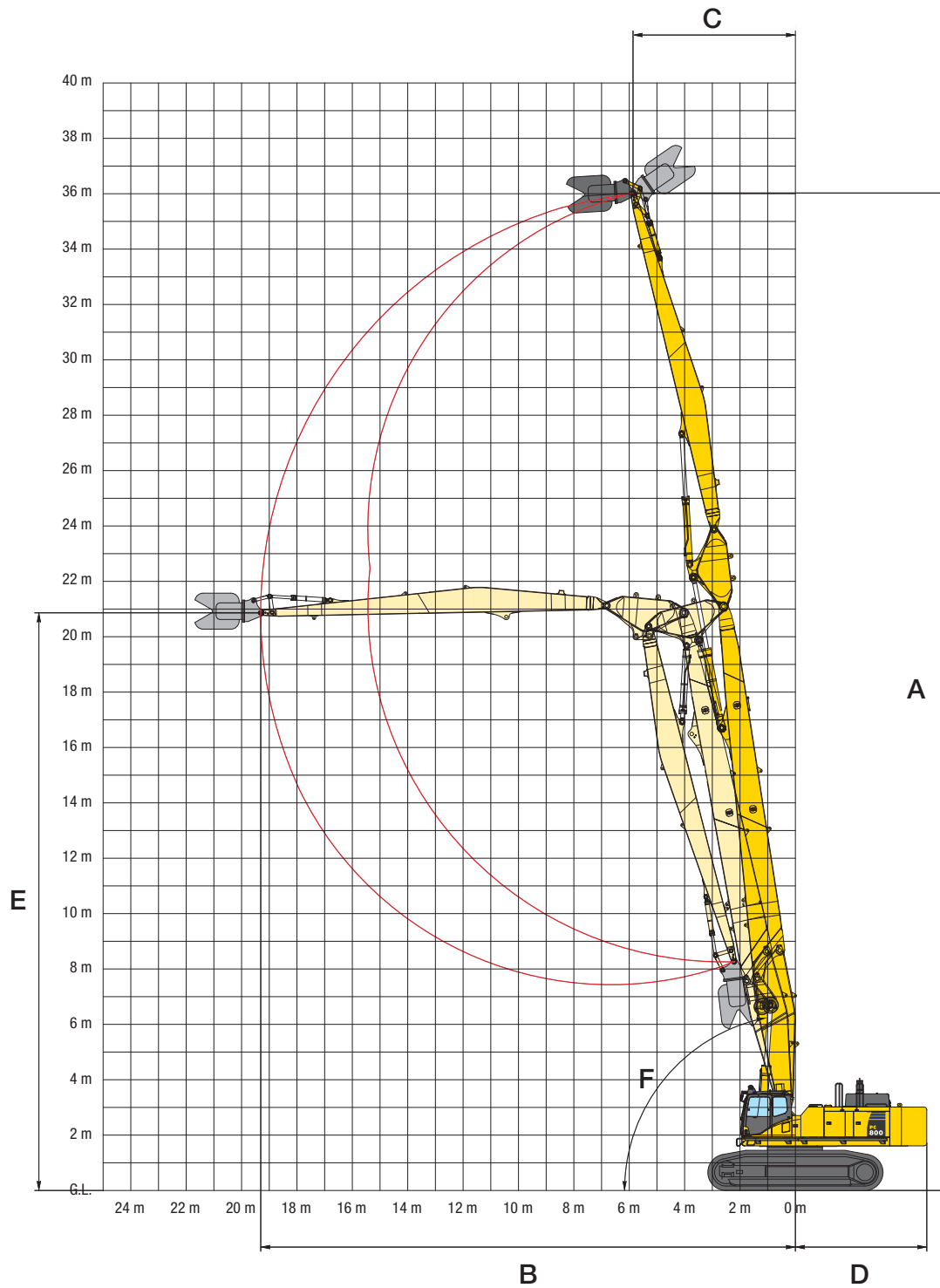
### HIGH REACH DEMOLITION

A	Max. working height (to pin at arm end)	39.500 mm
B	Max. forward reach	20.000 mm
C	Min. swing radius of arm end pin (max. height)	6.285 mm
D	Tail swing radius	4.745 mm
E	Height at max. reach	24.295 mm
F	Min. boom angle from ground at max. height	76°

For operator and jobsite safety, Komatsu recommend that high reach demolition machines work in line with the trackframe where ever possible.



## MEDIUM REACH DEMOLITION



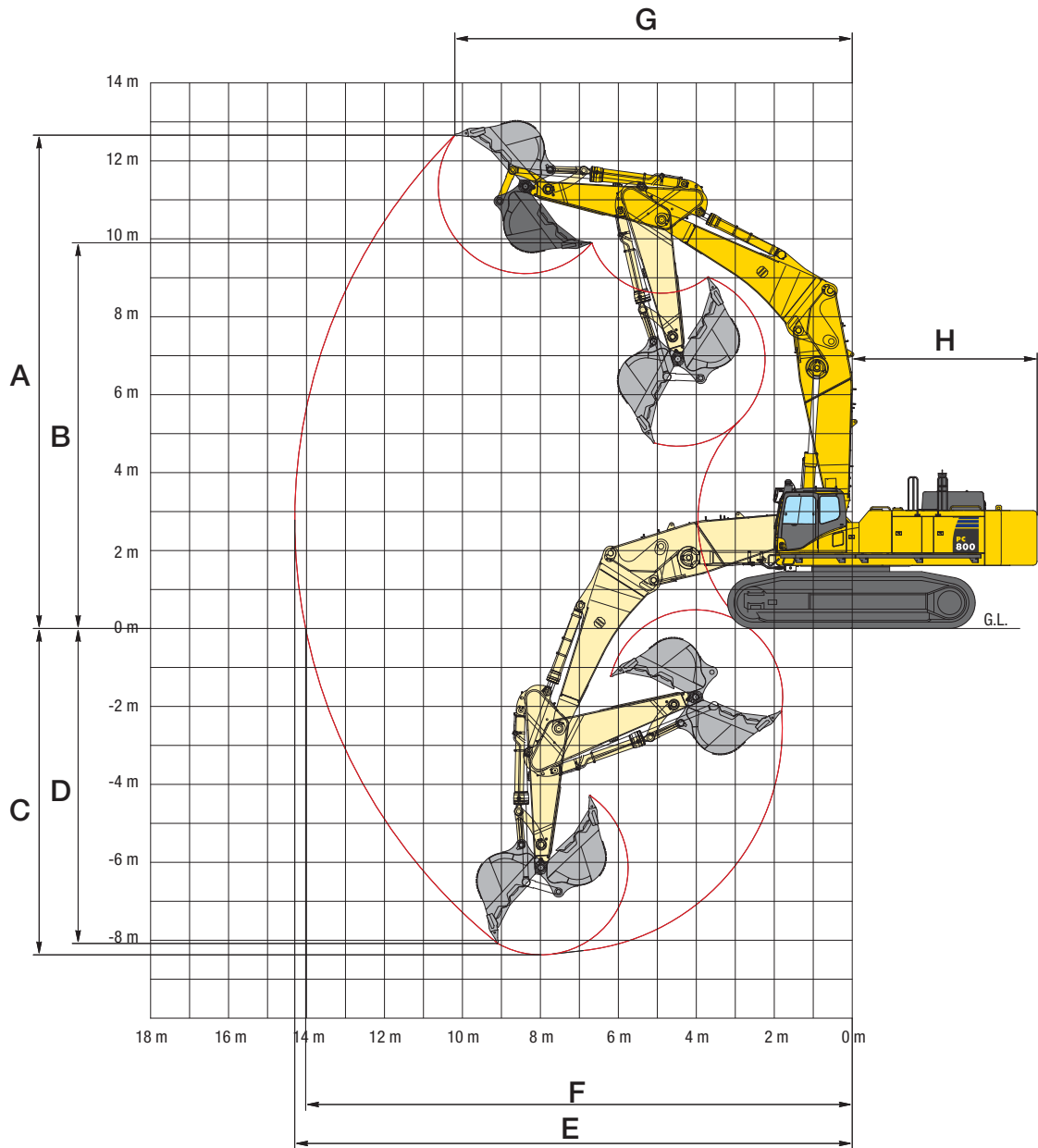
### MEDIUM REACH DEMOLITION

A	Max. working height (to pin at arm end)	36.025 m
B	Max. forward reach	19.310 m
C	Min. swing radius of arm end pin (max. height)	5.865 m
D	Tail swing radius	4.745 m
E	Height at max. reach	20.865 m
F	Min. boom angle from ground at max. height	78°

For operator and jobsite safety, Komatsu recommend that high reach demolition machines work in line with the trackframe where ever possible.

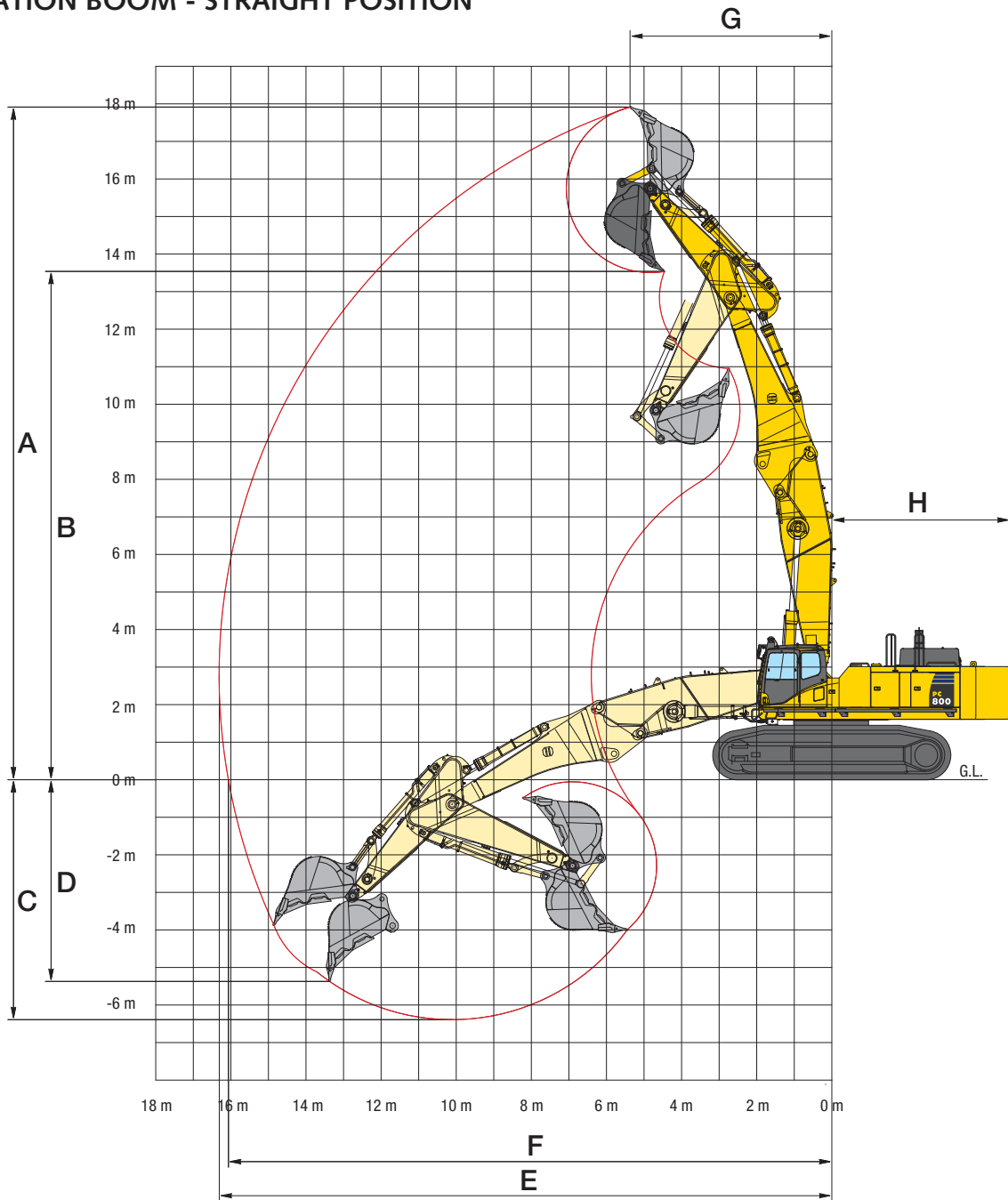
# Working Range

## EXCAVATION BOOM - BENT POSITION



ARM LENGTH	3,6 m
A Max. digging height	12.660 mm
B Max. dumping height	9.890 mm
C Max. digging depth	8.375 mm
D Max. vertical wall digging depth	8.080 mm
E Max. digging reach	14.300 mm
F Max. digging reach at ground level	14.020 mm
G Min. swing radius (bucket loaded)	10.195 mm
H Tail swing radius	4.745 mm

## EXCAVATION BOOM - STRAIGHT POSITION



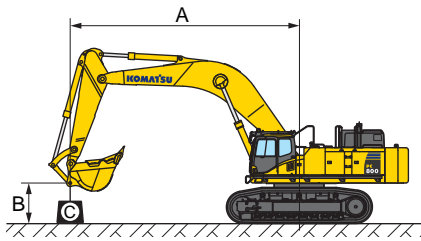
### ARM LENGTH

**3,6 m**

A	Max. digging height	17.915 mm
B	Max. dumping height	13.540 mm
C	Max. digging depth	6.390 mm
D	Max. vertical wall digging depth	5.370 mm
E	Max. digging reach	16.310 mm
F	Max. digging reach at ground level	16.065 mm
G	Min. swing radius (bucket loaded)	5.370 mm
H	Tail swing radius	4.745 mm

# Lifting Capacity

## PC800LC-8



A – Reach from swing center

B – Bucket hook height

C – Lifting capacities, including bucket, bucket linkage and cylinder

– Rating over front

– Rating over side

– Rating at maximum reach

When removing bucket, linkage or cylinder, lifting capacities can be increased by their respective weights.

## EXCAVATION BOOM - BENT POSITION

Lifting capacity with 3.600 mm arm, 610 mm shoes and 3.575 kg bucket

A				12,0 m		10,5 m		9,0 m		7,5 m		6,0 m		4,5 m	
B															
10,5 m	kg	*8.200	*8.200												
9,0 m	kg	*8.150	*8.150			*8.400	*8.400	*13.400	*13.400						
7,5 m	kg	*8.400	*8.400			*12.800	10.400	*14.250	*14.250						
6,0 m	kg	*8.950	7.100			*13.500	9.750	*15.500	13.650	*18.550	*18.550	*23.700	*23.700	*34.400	*34.400
4,5 m	kg	*9.700	6.150	10.900	6.400	*14.350	8.950	*16.900	12.350	*20.900	17.250	*28.050	24.800		
3,0 m	kg	9.850	5.550	10.400	5.900	13.650	8.200	18.150	11.150	*23.000	15.250	*31.450	21.300		
1,5 m	kg	9.500	5.200	9.900	5.450	12.900	7.450	17.000	10.100	23.200	13.750	*28.650	19.300		
0,0 m	kg	9.550	5.100			12.300	6.900	16.150	9.300	22.050	12.750	*30.950	18.400		
-1,5 m	kg	10.000	5.350			11.900	6.550	15.650	8.800	21.500	12.200	*31.650	18.100	*21.900	*21.900
-3,0 m	kg	11.100	6.000			11.750	6.400	15.400	8.600	21.300	12.050	*29.700	18.150	*29.800	*29.800
-4,5 m	kg	13.250	7.350					15.500	8.700	*21.400	12.200	*26.700	18.500	*33.150	32.700
-6,0 m	kg	*15.100	10.150							*17.850	12.700	*22.200	19.200		

## EXCAVATION BOOM - STRAIGHT POSITION

Lifting capacity with 3.600 mm arm, 610 mm shoes and 3.575 kg bucket

A				13,5 m		12,0 m		10,5 m		9,0 m		7,5 m		6,0 m		
B																
15,0 m	kg	*16.550	*16.550												*19.850	*19.850
13,5 m	kg	*13.050	*13.050									*19.400	*19.400			
12,0 m	kg	*11.450	10.100							*19.000	15.200	*19.400	*19.400			
10,5 m	kg	*10.600	7.500					16.050	10.400	*19.200	15.050	*20.250	*20.250	*18.900	*18.900	
9,0 m	kg	10.050	5.850			11.500	7.000	15.800	10.150	*19.850	14.450	*24.050	20.850	*27.700	*27.700	
7,5 m	kg	8.650	4.750			11.300	6.800	15.250	9.650	*20.700	13.500	*25.650	19.100			
6,0 m	kg	7.700	4.000	8.050	4.300	10.900	6.400	14.500	8.950	19.450	12.300					
4,5 m	kg	7.100	3.500	7.850	4.100	10.400	5.950	13.700	8.200	18.150	11.100					
3,0 m	kg	6.750	3.200	7.600	3.850	9.950	5.500	12.950	7.500	17.000	10.050					
1,5 m	kg	6.650	3.100	7.300	3.600	9.500	5.100	12.200	6.850	16.150	9.300					
0,0 m	kg	6.750	3.150	7.100	3.400	9.200	4.800	11.900	6.500	15.600	8.800					
-1,5 m	kg	7.150	3.400			9.000	4.600	11.600	6.300	15.350	8.550	*18.950	12.050			
-3,0 m	kg	*6.400	3.900			*8.900	4.550	11.350	6.050	*14.150	8.500	*15.400	12.150			

Lifting capacity table is published for guidance only, the machine is not intended for use as a crane.

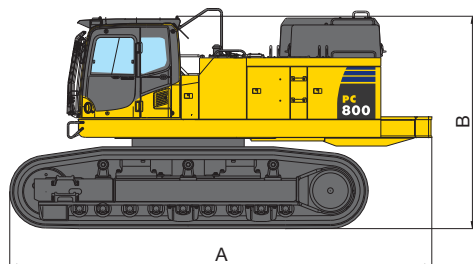
Lifting capacities are stated in kg, on the tip of the arm, for machine on firm, level supporting surface.

The weight of any attachment used should be deducted from the values shown, to calculate payload.

Indicated loads are based on ISO 10567 standard and do not exceed 75% of tipping or 87% of hydraulic capacity (indicated by \*).

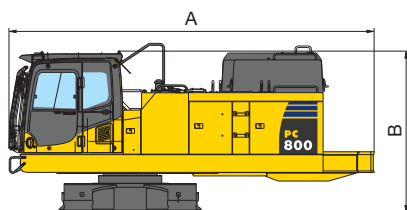
Lifting capacity of the machine is limited by machine stability, hydraulic capacity and maximum permissible load of the attachment.

# Transport Dimensions Breakdown



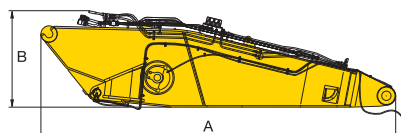
## BASE MACHINE

A	Length	7.450 mm
B	Height	3.750 mm
	Overall width	3.585 mm
	Weight	51.565 kg



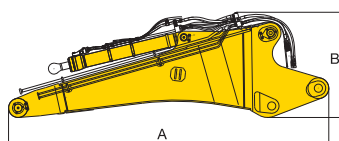
## BASE MACHINE W/O UNDERCARRIAGE

A	Length	6.440 mm
B	Height	2.850 mm
	Overall width	3.265 mm
	Weight	26.035 kg



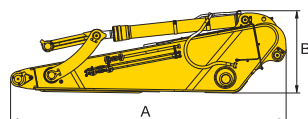
## DEMOLITION 1st BOOM

A	Length	6.090 mm
B	Height	1.660 mm
	Overall width	1.390 mm
	Weight	6.480 kg



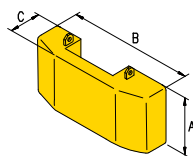
## EXCAVATION BOOM

A	Length	5.700 mm
B	Total height	1.875 mm
	Overall width	1.080 mm
	Weight	6.300 kg



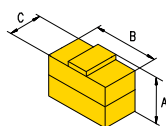
## EXCAVATION ARM

A	Length	4.775 mm
B	Height	1.425 mm
	Overall width	925 mm
	Weight	4.595 kg



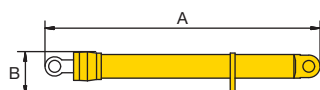
## COUNTERWEIGHT

A	Height	1.400 mm
B	Width	3.195 mm
C	Length	1.330 mm
	Weight	12.070 kg



## ADDITIONAL COUNTERWEIGHT

A	Height	1.400 mm
B	Width	1.640 mm
C	Length	760 mm
	Weight	8.070 kg



## BOOM CYLINDERS

A	Length	3.265 mm
B	Width	650 mm
C	Height	550 mm
	Weight (2x)	1.060 kg

# Hydraulic Excavator

## PC800LC-8 High Reach Demolition Specification

### Standard and Optional Equipment

#### ENGINE

Komatsu SAA6D140E-5, 370 kW turbocharged common rail direct injection diesel engine, EU Stage IIIA compliant	●
Radiator & oil cooler with fly net	●
Automatic engine warm-up system	●
Engine overheat prevention system	●
Cooling fan: remote hydraulically driven variable speed, reversible	●
Auto-deceleration function	●
Engine ignition can be password secured on request	●
Alternator 24 V/75 A	●
Starter motor 24 V/11 kW	●
Batteries 2 × 12 V/240 Ah	●

#### UNDERCARRIAGE

Track frame undercovers	●
LC undercarriage	●
610, 710 mm wide double grouser shoes	○
Extra additional track roller guard (2 per side is std.)	○
Full length track roller guards	○

#### HYDRAULIC SYSTEM

Electronic Open-centre load sensing (E-OLSS) hydraulic system	●
Pump and engine mutual control (PEMC) system	●
Working mode selection system (power mode, economy mode)	●
In-line filter for hydraulics	●
Adjustable PPC wrist control levers with 3 button controls for arm, boom, bucket and swing	●
Heavy lift mode	●
2 mode boom control	●
Two additional service valves (full flow)	●
One additional service valve (1/2 flow)	●
Drain circuit for hydraulic attachment rotation motors	●

#### LIGHTING SYSTEM

Additional cab roof lights	●
Beacon	●

#### CABIN

Demolition Safety SpaceCab™, with ISO 10262 level 2 FOPS guards and roof screen wash/wiper, safety glass windows, pull-up type front window with locking device, fixed roof window with wiper and washer, removable lower window, front window wiper	●
Tilting cab, with control equipment, hydraulic power hoses and cab raise cylinders	●
PPC pedal for high reach demolition mid link	●
PPC pedal for attachment operation (crush/rotate)	●
Heated air suspension seat with lumbar support, height adjustable arm rests and retractable seat belt	●
Automatic climate control system	●
12 Volt power supply	●
Beverage holder and magazine rack	●
Hot and cool box	●
Radio	●

#### SAFETY EQUIPMENT

Electric horn	●
Working range indicator alarm	●
Lockable fuel cap and covers	●
Audible travel alarm	●
Boom, mid link and arm safety valves	●
Arm safety valve (excavation arm)	●
Battery main switch	●
Step light with timer	●

#### DRIVES AND BRAKES

Hydrostatic, 2-speed travel system with automatic shift and planetary gear type final drives, and hydraulic travel and parking brakes	●
PPC control levers and pedals for steering and travel	●

#### SERVICE AND MAINTENANCE

Automatic fuel line de-aeration	●
Double element type air cleaner with dust indicator and auto dust evacuator	●
KOMTRAX™ - Komatsu satellite monitoring system	●
Multi-function colour monitor with equipment management monitoring system (EMMS)	●
Toolkit and spare parts for first service	●

#### WORK EQUIPMENT

Demolition first boom: Includes demolition first boom, fitted with hydraulic pipework, with quick connectors, suitable for operation of high reach demolition work equipment and operation of rotating crusher attachment	●
Two-mode boom control	●
Excavation arm assembly: Includes bucket cylinder and piping, bucket linkage, 3,6 m standard arm, with 2 additional dual flow proportional service circuits (by pedal), with drain circuit for hydraulic attachment rotation motors	○
Excavation boom: Includes two position excavation boom (bent/straight) to fit onto demolition first boom. Associated pipework for excavation arm cylinder and bucket cylinder. Quick connectors to suit demolition first boom. With pipework suitable for operation of excavation equipment and rotating crusher attachment	○
Demolition second boom: Includes demolition extension boom (3,5 m) fitted with hydraulic pipework, with quick connectors, suitable for operation of high reach demolition work equipment and operation of rotating crusher attachment	○
Demolition third boom: Includes demolition third boom, mid link, high reach demolition arm, demolition attachment linkage. Fitted with hydraulic pipework, with quick connectors, suitable for operation of high reach demolition work equipment and operation of rotating crusher attachment	○
Komatsu buckets	○

#### OTHER EQUIPMENT

Heavy duty revolving frame with 9 mm heavy duty demolition under covers and side guard protection	●
Additional counterweight. To fit into main demolition counterweight when high reach demolition equipment is installed. Removable for excavation operations. Included with any high reach boom equipment	●
Remote greasing for swing circle and pins	●
Standard colour scheme and decals	●
Parts book and operator manual	●
Biodegradable oil for hydraulic system	○
Customised paint	○

Further equipment on request

- standard equipment
- optional equipment

# KOMATSU

**Komatsu Europe International NV**  
Mechelsesteenweg 586  
B-1800 VILVOORDE (BELGIUM)  
Tel. +32-2-255 24 11  
Fax +32-2-252 19 81  
[www.komatsu.eu](http://www.komatsu.eu)

Your Komatsu partner:

UESS15400 03/2011

Materials and specifications are subject to change without notice.

**KOMATSU** is a trademark of Komatsu Ltd. Japan.