

# KOMATSU

## WA470-6

ENGINE POWER  
204 kW / 274 HP @ 2.000 rpm

OPERATING WEIGHT  
24.000 kg

BUCKET CAPACITY  
4,1 - 6,0 m<sup>3</sup>

**WA**  
**470**

W  
H  
E  
E  
L  
L  
O  
A  
D  
E  
R



**WA470-6**

# WALK-AROUND

The WA470-6 wheel loader is the perfect choice for applications that demand high productivity. With Komatsu's advanced power-train technology and a high-performance engine that delivers high power and torque at low revs, the WA470-6 exceeds industry expectations for this class of wheel loader. Whatever the job, the WA470-6 can handle it with excellent fuel efficiency – thanks to its outstanding tractive force and Closed-centre Load Sensing System (CLSS) hydraulics. Moreover, the new SpaceCab™ offers unrivalled operator comfort and an excellent view of the bucket and wheels. Reliability, economy, safety and ease of service – the WA470-6 sets new standards in all areas.

### ***Exceptional driver comfort***

- Two-door SpaceCab™
- Excellent all-round view
- Automatic transmission with mode selection and variable shifting points
- Electronic, short-stroke levers (option)
- Large armrest and adjustable console
- Fully adjustable steering column
- Air conditioning and CD-radio
- Climate control (option)
- Deluxe heated, air-suspended seat

### ***Outstanding productivity***

- CLSS hydraulics with variable-displacement pumps
- Superior dumping height and reach
- Long wheel base
- Torque converter lock-up



### ***Diverse and flexible***

- Comprehensive range of attachments for a wide variety of uses

**ENGINE POWER**

204 kW / 274 HP @ 2.000 rpm

**OPERATING WEIGHT**

24.000 kg

**BUCKET CAPACITY**4,1 - 6,0 m<sup>3</sup>**Easy maintenance**

- Equipment Management and Monitoring System (EMMS)
- Centralised oil and fuel filter arrangement
- Gull-wing doors for easy ground-level access
- Cab-controlled reversible fan
- Automatic central lubrication system
- Komtrax™ Komatsu tracking system

**High reliability and long service life**

- High-quality original Komatsu components
- Robust, torsionally rigid frame
- Maintenance-free, fully hydraulic, wet-disc service and parking brakes
- Sealed DT wiring harness connectors



**ecot3**

ecology & economy - technology 3

**Komatsu SAA6D125E-5**

engine with high pressure common rail injection delivers ample power in a fuel efficient way. The engine meets EU Stage IIIA and EPA Tier III emissions regulations.

# NEW ECOT3 ENGINE

The WA470-6's new Komatsu SAA6D125E-5 engine features higher torque, better performance at low speed, excellent throttle response and advanced electronics. The result is unequalled productivity and the lowest fuel consumption. The engine develops 204 kW (274 HP) at just 2.000 rpm and delivers 1.360 Nm of torque at just 1.400 rpm. It is designed and manufactured by Komatsu to the highest engineering and quality standards (including the Komatsu-manufactured electronic components) guaranteeing the highest reliability and durability no matter what the challenge.

## Heavy duty HPCR system (High Pressure Common Rail fuel injection)

A high pressure pump pumps fuel into an accumulator chamber or 'Common Rail'. An ECU (electronic control unit) then optimizes fuel injection from the common rail into the engine cylinders. This improves engine power and fuel efficiency, reducing emission and noise levels.

## New combustion system

Our new combustion system optimises combustion timing and ignition. Thanks to extensive computer simulations and analyses, its specially designed combustion chamber reduces NOx and particulates emissions, fuel consumption and noise levels.

## Heavy-duty cooled EGR system

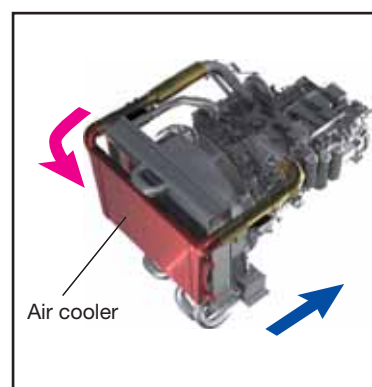
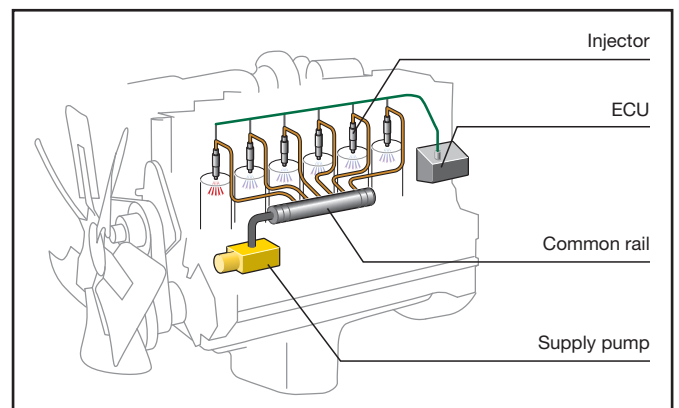
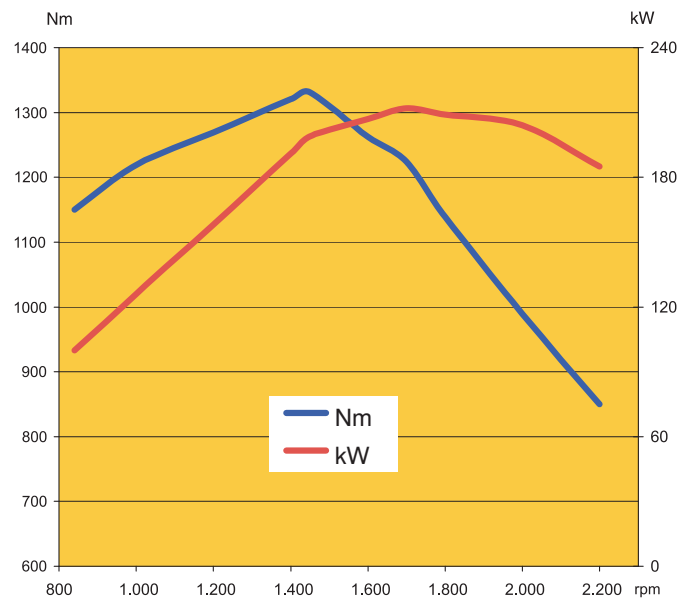
Cooled exhaust gas returned to the cylinders prevents nitrogen and oxygen bonding during combustion, reducing NOx emissions, lowering thermal stress and improving fuel efficiency.

## Electronic control system

Komatsu's electronic control system monitors the vehicle performance, optimising emissions, fuel efficiency and noise levels, even under extreme conditions.

## Air-to-air charge air cooling system

By cooling the compressed air supplied by the turbo-charger to the cylinders, this system optimises combustion efficiency, reduces emissions and improves engine performance.



# OUTSTANDING PRODUCTIVITY



## Advanced machine design

The WA470-6 features the ideal combination of a highly efficient drive line, powerful hydraulics and excellent stability. Its outstanding rimpull makes it easy to penetrate even the densest materials and enables higher productivity in V-shaped loading. With the powerful hydraulic system, filling the bucket is as fast and efficient as possible. Meanwhile, the high stability ensures the machine is safe to operate even when the loaded material is unexpectedly heavy. Furthermore, the boom suspension system, which is fitted as standard, minimizes spillage when transporting the material. This reduces costs and extends the lifetime of the bearings and bushings.



## Precision control with ease

The WA470-6 features variable-displacement pumps on both the hydraulic and steering systems. These pumps deliver the exact amount of oil required, dramatically improving fuel efficiency. Komatsu's CLSS hydraulics enables extremely precise control of the work equipment, and ensures that the bucket, boom and hydraulically driven attachments can all move smoothly at the same time.



## Faster load & carry with optional torque converter lock-up

The torque converter lock-up system delivers unbeatable productivity and fuel efficiency in load & carry and short distance transport applications. The operator can engage the system from 3rd to 4th gear. It noticeably increases travel speed, particularly when going uphill, thanks to the larger tractive force. At the same time, it eliminates converter losses significantly reducing fuel consumption.

# EXCELLENT STABILITY AND MANOEUVRABILITY



## Wide tread and long wheelbase

A 2.300 mm wide tread and a long wheel base of 3.450 mm give the WA470-6 outstanding stability – enough to handle rough terrain and fast load & carry cycles with the minimum spillage and maximum comfort. With 37° steering articulation to both sides, the WA470-6 is extremely manoeuvrable in tight spaces for faster loading cycles.

## Superior dumping height and reach

The long lifting frame allows an enormous dumping height of 3.085 mm and a reach of 1.280 mm that is just as impressive (with 4,5 m<sup>3</sup> universal bucket, measured to the cutting edge). With this working range, loading high-sided semi-trailers with a payload of 28 tonnes becomes child's play.



# SIMPLE & CONVENIENT OPERATION

## Smooth ergonomic hydraulic control

The new pilot control levers are designed as finger tip control levers for precise and fatigue-free control of the loading process. The position of the levers and the location of the entire console can be adjusted to suit any operators' preferred height and reach. EPC equipment is also available as optional equipment for controlling the working hydraulic system. Apart from the electronic pilot control of the finger levers, EPC offers a modulating function for slowing and stopping bucket movements when lowering, that is vibration-free. Furthermore, the upper and lower boom cut out position can be pre-set with a switch that ensures major ease of operation for the operator when work is constantly changing such as in loading lorries. As a third feature, EPC equipment has a semiautomatic excavating function for simple filling buckets.



Electronic, short-stroke levers (option)

## Multi-function lever (option)

A multi-function lever with integrated forward/reverse switch is also available as optional equipment. The servo-assisted multi-function lever ensures the simplest and most comfortable operation of the equipment. Simultaneously, the driver can change between forward and reverse direction with the rocker switch. The multi-function lever is the right choice for earth moving jobs.



## Intelligent gas pedal

Our innovative new thrust-sensing gas pedal automatically helps the operator match the timing of gear shifts to the load. In heavy-duty work, requiring high rimpull and maximum acceleration, the operator tends to press heavily on the gas pedal. The machine anticipates this and shifts up gears as late as possible. In light-duty work, where fuel consumption is a major factor, the operator will intuitively press the gas pedal lightly. Again, the machine anticipates this – and shifts up gears as early as possible to achieve the best fuel efficiency.



## New and easy-to-use joystick steering (option)

A new joystick steering system is available as optional equipment, and ensures that steering can be wrist operated easily and conveniently in loading operations. This system allows you to change the direction of travel and gear shifting with push buttons on the joystick. And you may pre-select the steering speed in 2 stages, depending upon whether fast V-loading or precise load & carry is required.



# THE SPACECAB™



## **Perfect driving convenience and the best all-round visibility**

The cabin is the largest in its class and offers you unparalleled driving convenience comparable to that of a passenger car. The large frameless windscreen, ensures an optimum view of the bucket and tyres, and the slanted rear end also gives an excellent view towards the rear. The cabin is mounted on viscose shock absorbers guaranteeing an interior noise level of only 72 dB(A), one of the lowest in this class. That together with air conditioning as standard ensures the operator's well-being just as much as the air-cushioned multi-adjustable premium drivers seat with seat heater and lumbar support. The easy-to-work hydraulic operating controls on the multi-adjustable hydraulic console makes it possible to operate the wheel loader conveniently and ergonomically. The operator's well-being is ensured over long and productive hours.



## **Safe, convenient access**

For easy and safe entry, the WA470-6 includes an access ladder with self-cleaning, anti-slip steps inclined forward at 8° on both sides of the cabin. The cab doors are hinged at the rear of the cab for the widest opening angle – even the right-side door can be fully opened.



Air conditioner

Deluxe heated, air-suspended seat



Hot and cool box

Fully adjustable steering column



CD radio

Sliding window



12 Volt power supply (option)

Storage compartment



Wide, multi-adjustable armrest

Cup holder



# SIMPLE AND FAST MAINTENANCE

## **EMMS (Equipment Management and Monitoring System)**

This completely new type of monitoring system is clearly structured and easy to read because it is directly in the operator's field of view. If there is a malfunction, it immediately displays the details in the chosen national language and in plain text in the display field. This system not only has an error memory and a self-diagnosis function, but also a service interval display. This significantly simplifies service work and the operator is notified on time of the regular oil and filter changes. The operator and customer-service engineer are constantly informed about the optimum machine state so that problems don't even occur in the first place.



## **Quick-reverse hydraulic fan**

A push-button switch in the cab allows the operator to run the radiator fan in reverse for working in dusty environments. This can be easily done while the machine is in operation and without needing to stop the engine.



## **Automatic reversing function**

To further reduce cleaning times, the machine can be equipped with an automatic reversible fan that can be set to clean at intervals between 10 minutes and 2 hours.



## **KOMTRAX™ Komatsu Tracking System**

The Komatsu Tracking System, KOMTRAX™, provides a revolutionary new way to monitor your equipment, anytime, anywhere. It lets you pinpoint the precise location of your machines and obtain real-time machine data. Using GPS transmitter and satellite technology, it's designed to be future proof and will meet your demands today and tomorrow.





### Designed to save time

With long service intervals and best-in-class accessibility, the WA470-6 reduces the time and money you need to suspend on maintenance. A gas spring helps the operator open and close each gull-wing side door for easy daily servicing.

### Simple and convenient access to service

The service doors are designed as gull-wing doors. They allow you convenient and safe access to the daily service points from the ground.



### Centralised filter arrangement

With all filters collected into a centralised arrangement, the down time for servicing is reduced to a minimum.

### External fluid drains

All fluids can be drained through externally mounted valves for easy maintenance and reduced spillage.

### Centralised lubrication system as standard

The centralised lubrication system reduces the daily service work to the absolute minimum. Its robust piping with protective equipment in all areas ensures consistent lubrication amounts, operating reliability and electronic monitoring with a malfunction signal in the cabin. This increases the machine's service readiness and service life while lowering repair and service costs.



### Customer service and spare parts supply

When you buy a Komatsu construction machine, you buy a lot more than just the product alone. Our service support accompanies you throughout the entire life of your wheel loader. Programs for preventative maintenance are just as much a part of what we offer as the complete range of dealer service and repair programmes. And, if there is a malfunction, Komatsu's close-knit network of dealers and excellent parts service ensures you minimum downtime.



# BUCKETS AND ATTACHMENTS



## Universal bucket

This type of bucket is impressive because of its excellent penetration and loosening properties and its good material holding properties.

This universal bucket can be equipped with flush mount adapters and interchangeable teeth.



## Earthmoving bucket

The earthmoving bucket with a one-piece bucket bottom is suited both for earthworks and loading cohesive material. The slanted sides give powerful penetration.

It is equipped either with flush mount adapters and interchangeable teeth or also with a rear removable edge.



## Stock pile bucket

The stock pile bucket is the right solution for handling loose and relatively light materials. The straight sidewalls ensure a high bucket capacity, the rear edge makes levelling and cleaning up jobsites easy. This stock pile bucket can be equipped with flush mount adapters and interchangeable teeth or a bolt-on cutting edge.



## Maximum dumping height with high-lift

The dumping height and reach can be increased for special jobs with the optional high-lift lifting frame. You may increase dumping height by approximately 515 mm (with 4,1 m<sup>3</sup> universal bucket).



## Hydraulic quick coupler

The WA470-6 can change attachments in a matter of seconds with a market compatible or HD wedge type quick coupler. With the wedge type quick coupler, featuring a unique and innovative design, the offset to the original connection points is reduced to a minimum. Thus, lifting forces remain almost the same compared to a direct mounted bucket.



## A comprehensive range of attachments

The log grapple: With its sturdy structure and its great hydraulic power and a special tilting cylinder, the WA470-6 is also perfectly suited to work in the timber industry. The robust design of the lifting frame and axles ensures maximum durability.

# SPECIFICATIONS



## ENGINE

Model ..... Komatsu SAA6D125E-5  
 Type ..... Common rail direct injection, water-cooled, turbocharged, after-cooled, cooled EGR diesel  
 Engine power  
 at rated engine speed ..... 2.000 rpm  
 ISO 14396 ..... 204 kW / 274 HP  
 ISO 9249 (net engine power) ..... 203 kW / 272 HP  
 Max. torque / engine speed ..... 1.360 Nm / 1.400 rpm  
 No. of cylinders ..... 6  
 Bore x stroke ..... 125 x 150 mm  
 Displacement ..... 11,04 ltr  
 Fan drive type ..... Hydraulic  
 Lubricating system ..... Gear pump, water-cooled oil cooler, piston cooling nozzles  
 Filter ..... Main-flow filter with water separator  
 Air-filter type ..... Dry-air filter with automatic dust emission and preliminary purification including a dust display



## TRANSMISSION

Type ..... Automatic powershift transmission  
 Torque converter ..... One-stage, one-phase, 3-element

Speeds in km/h (with 26.5 R25 tyres)

GEAR	1st	2nd	3rd	4th
Forwards	6,3	12,1	21,7	34,9
with torque converter lock-up	-	-	22,5	39,0
Reverse	6,7	12,8	23,0	39,0
with torque converter lock-up	-	-	24,0	40,0



## CHASSIS AND TYRES

System ..... 4-wheel drive  
 Front axle ..... Komatsu HD axle, semi-floating, (LSD-differential optional)  
 Rear axle ..... Komatsu HD axle, semi-floating, 26° swing angle (LSD-differential optional)  
 Differential ..... Straight bevel gear pair  
 Final drive ..... Planetary gear in an oil bath  
 Tyres ..... 26.5 R25



## ENVIRONMENT

Engine emissions ..... Fully complies with EU Stage IIIA and EPA Tier III exhaust emission regulations  
 Noise levels  
 LwA external ..... 107 dB(A) (2000/14/EC Stage 2)  
 LpA operator ear ..... 72 dB(A) (ISO 6396 dynamic test)  
 Vibration levels (EN 12096:1997)\*  
 Hand/arm ..... ≤ 2,5 m/s<sup>2</sup> (uncertainty K = 0,38 m/s<sup>2</sup>)  
 Body ..... ≤ 0,5 m/s<sup>2</sup> (uncertainty K = 0,13 m/s<sup>2</sup>)  
 \* for the purpose of risk assessment under directive 2002/44/EC, please refer to ISO/TR 25398:2006.



## BRAKES

Operating brakes ..... Hydraulically actuated, wet multi-disc brakes on all wheels  
 Parking brake ..... Wet multi-disc  
 Emergency brake ..... Uses the parking brake



## HYDRAULIC SYSTEM

Type ..... Komatsu CLSS (Closed Centre Load Sensing System)  
 Hydraulic pump ..... Variable piston pump  
 Working pressure ..... 350 bar  
 Maximum pump flow ..... 242 ltr/min  
 No. of hydraulic/bucket cylinders ..... 2/1  
 Type ..... Double-action  
 Bore diameter x stroke  
 Boom cylinder ..... 140 x 764 mm  
 Bucket cylinder ..... 160 x 575 mm  
 Hydraulic cycle with rated load bucket filling  
 Raise time ..... 6,0 s  
 Lowering time (empty) ..... 3,7 s  
 Dumping time ..... 1,4 s



## STEERING

System ..... Articulated frame steering  
 Type ..... Completely hydraulic power steering  
 Steering angle to either side ..... 37°  
 Steering pump ..... Variable piston pump  
 Working pressure ..... 250 bar  
 Pumping capacity ..... 195 ltr/min  
 No. of steering cylinders ..... 2  
 Type ..... Double-action  
 Bore diameter x stroke ..... 90 x 441 mm  
 Smallest turn (outer edge of the tyre 26.5 R25) ..... 6.990 mm



## CABIN

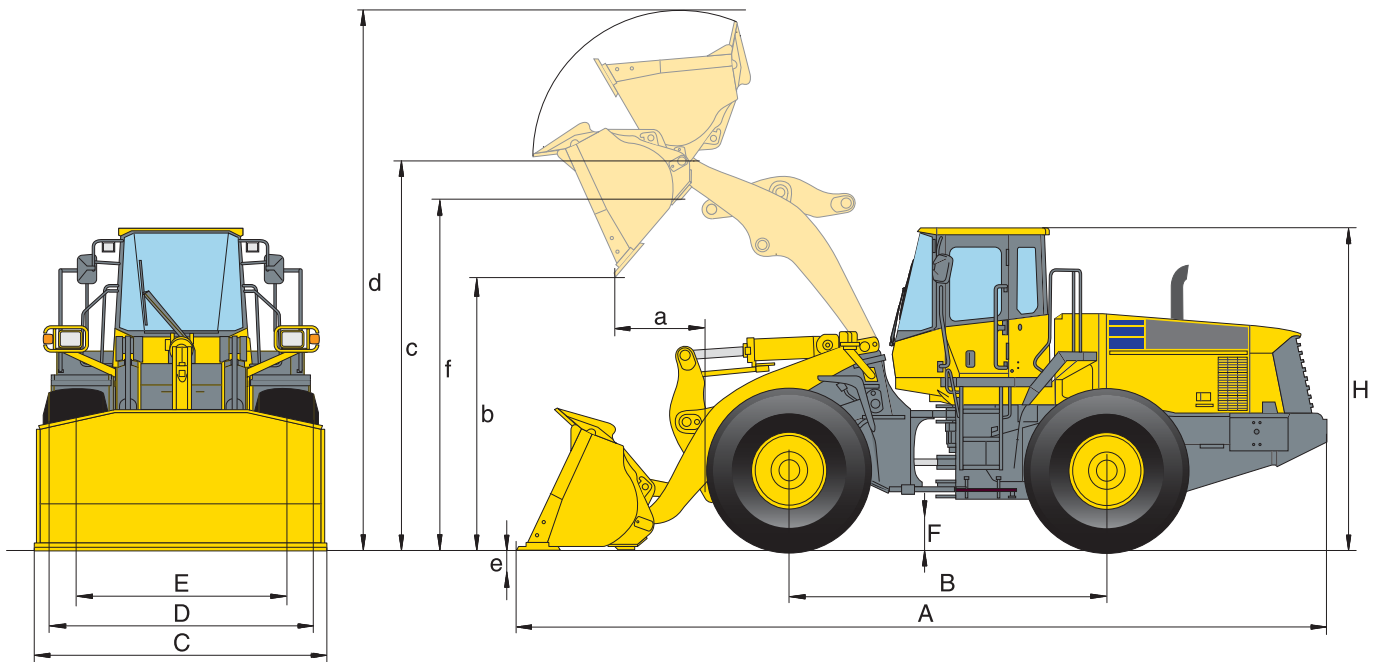
Two-door SpaceCab™ in conformity with ISO 3471 with ROPS (roll over protective structure) in conformity with SAE J1040c and FOPS (falling object protective structure) in conformity with ISO 3449. The air-conditioned pressurised cabin is mounted upon hydrobearings and is noise dampened.



## SERVICE REFILL CAPACITIES

Cooling system ..... 60 ltr  
 Fuel tank ..... 413 ltr  
 Engine oil ..... 38 ltr  
 Hydraulic system ..... 173 ltr  
 Front axle ..... 60 ltr  
 Rear axle ..... 56 ltr  
 Torque converter and transmission ..... 54 ltr

# DIMENSIONS AND PERFORMANCE FIGURES

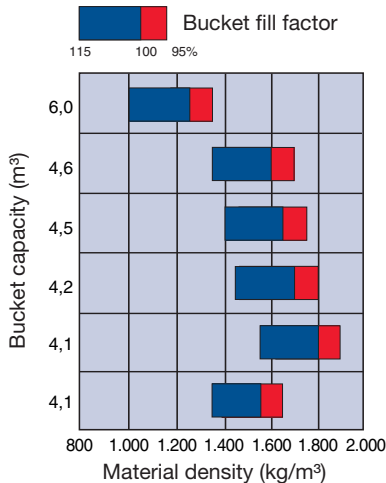


**Measurements and working specifications**

Bucket type		Universal					Earthmoving		Light material
		with teeth	with BOC	w/o teeth	with teeth	with BOC	with teeth	with BOC	with BOC
<b>Bucket capacity (heaped, ISO 7546)</b>	<b>m<sup>3</sup></b>	<b>4,1</b>	<b>4,25</b>	<b>4,5</b>	<b>4,5</b>	<b>4,65</b>	<b>4,2</b>	<b>4,35</b>	<b>6,0</b>
Sales code	3946	C02	C03	C11	C12	C13	C42	C45	C21
Material density	t/m <sup>3</sup>	1,8	1,7	1,65	1,6	1,55	1,7	1,65	1,2
Bucket weight	kg	2.015	2.090	1.923	2.085	2.162	2.187	2.257	2.305
Static tipping load, straight	kg	18.505	18.275	18.650	18.430	18.180	18.285	18.035	18.490
Static tipping load, 37° articulated	kg	16.510	16.300	16.660	16.440	16.200	16.300	16.060	16.465
Break-out force hydraulic	kN	194	183	194	193	183	192	181	167
Lifting capability hydr. at ground level	kN	232	230	232	232	230	231	229	228
Operating weight (without add. counterw.)	kg	23.060	23.140	22.970	23.130	23.210	23.235	23.305	23.350
Turning radius at corner of tyres	mm	6.990	6.990	6.990	6.990	6.990	6.990	6.990	6.990
Turning radius at bucket edge	mm	7.670	7.625	7.665	7.745	7.700	7.675	7.630	7.765
a Reach at 45°	mm	1.465	1.315	1.280	1.465	1.315	1.480	1.330	1.460
b Dump height at 45°	mm	2.900	3.010	3.085	2.900	3.010	2.885	2.995	2.935
c Hinge pin height	mm	4.335	4.335	4.335	4.335	4.335	4.335	4.335	4.335
d Height top edge of bucket	mm	5.975	5.975	5.975	5.975	5.975	5.950	5.950	6.265
e Digging depth	mm	125	155	125	125	155	125	155	105
f Max. loading height at 45°	mm	4.025	4.025	4.025	4.025	4.025	4.020	4.020	4.065
A Overall length, bucket grounded	mm	9.230	9.070	8.970	9.230	9.070	9.250	9.090	9.190
B Wheelbase	mm	3.450	3.450	3.450	3.450	3.450	3.450	3.450	3.450
C Bucket width	mm	2.995	3.000	3.160	3.165	3.170	2.995	3.000	3.250
D Width over tyres	mm	2.975	2.975	2.975	2.975	2.975	2.975	2.975	2.975
E Track width	mm	2.300	2.300	2.300	2.300	2.300	2.300	2.300	2.300
F Ground clearance	mm	505	505	505	505	505	505	505	505
H Overall height	mm	3.470	3.470	3.470	3.470	3.470	3.470	3.470	3.470

All measurements with tyres 26.5 R25. Details of dumping heights and reach to cutting edge or bolt-on cutting edge.

Change in data caused by:	Add. counterweight (rear)	Heavy counterweight (rear)	Tyres 26.5 R25 XLD D1A L4	Tyres 26.5 R25 XMINE D2 L5
Operating weight	+ 400 kg	+ 1.085 kg	+ 392 kg	+ 1.124 kg
Static tipping load, straight	+ 1.020 kg	+ 2.620 kg	+ 294 kg	+ 840 kg
Static tipping load, 37° articulated	+ 890 kg	+ 2.290 kg	+ 265 kg	+ 760 kg
Overall length (A)	+ 165 mm	+ 123 mm	-	-
Reach at 45°	-	-	- 35 mm	- 29 mm
Dump height at 45°	-	-	+ 35 mm	+ 45 mm
Width over tyres	-	-	+ 17 mm	+ 45 mm
Overall height (H)	-	-	+ 35 mm	+ 45 mm



- Light materials bucket**  
Ideal for industrial use such as loading lightweight recycling materials or wood chips or shavings
- Stock pile bucket**  
Loading loosened or broken material
- Universal/Earth-moving bucket**  
Ideal for road-building or earthworks, or for load & carry uses
- Heavy-Duty bucket**  
Loading and loosening of particularly abrasive materials
- Rock bucket**  
Loading blasted and particularly abrasive material
- Universal/Earth-moving bucket (high-lift mount)**  
Ideal for road-building or earthworks, or for load & carry uses

	Stockpile			Heavy Duty		Rock		Universal (High-lift)* w/o teeth
	w/o teeth	with teeth	with BOC	with teeth	with BOC	Straight edge with teeth	Spade nose with BOC	
	<b>4,6</b>	<b>4,6</b>	<b>4,9</b>	<b>4,1</b>	<b>4,25</b>	<b>4,1</b>	<b>4,1</b>	<b>4,1</b>
	C43	C44	C71	C36	C37	C65	C66	C01
	1,55	1,55	1,45	1,75	1,65	1,75	1,7	1,55
	2.267	2.422	2.543	2.388	2.450	2.586	2.785	1.865
	18.165	17.950	17.730	18.055	17.835	17.950	17.480	16.105
	16.180	15.970	15.760	16.060	15.860	15.940	15.495	14.290
	182	182	176	195	184	179	147	189
	229	229	229	231	230	235	222	195
	23.315	23.470	23.590	23.435	23.500	23.635	23.835	24.290
	6.990	6.990	6.990	6.990	6.990	6.990	6.990	6.990
	7.615	7.695	7.645	7.665	7.625	7.715	7.720	7.830
	1.350	1.535	1.355	1.460	1.310	1.325	1.545	1.455
	3.015	2.835	2.970	2.905	3.015	2.975	2.755	3.600
	4.335	4.335	4.335	4.335	4.335	4.335	4.335	4.850
	5.980	5.980	5.980	5.950	5.950	5.915	5.915	6.485
	125	125	155	125	155	170	170	265
	4.020	4.020	4.020	4.020	4.020	4.020	4.020	4.530
	9.065	9.325	9.130	9.225	9.065	9.115	9.430	9.740
	3.450	3.450	3.450	3.450	3.450	3.450	3.450	3.450
	2.990	2.995	3.170	2.995	3.000	3.170	3.170	2.990
	2.975	2.975	2.975	2.975	2.975	2.975	2.975	2.975
	2.300	2.300	2.300	2.300	2.300	2.300	2.300	2.300
	505	505	505	505	505	505	505	505
	3.470	3.470	3.470	3.470	3.470	3.470	3.470	3.470

Typical material density – loose (in kg/m³)	
Basalt .....	1.960
Bauxite, Kaolin .....	1.420
Earth, dry, ex store .....	1.510
Earth, wet, excavated.....	1.600
Gypsum, broken.....	1.810
Gypsum, crushed.....	1.600
Granite, broken.....	1.660
Limestone, broken.....	1.540
Limestone, crushed.....	1.540
Gravel, unscreened .....	1.930
Gravel, dry .....	1.510
Gravel, dry, 6-50 mm.....	1.690
Gravel, wet, 6-50 mm.....	2.020
Sand, dry, loose .....	1.420
Sand, damp.....	1.690
Sand, wet .....	1.840
Sand and clay, loose.....	1.600
Sand and gravel, dry .....	1.720
Sandstone .....	1.510
Slate .....	1.250
Slag, broken .....	1.750
Stone, crushed .....	1.600
Clay, natural.....	1.660
Clay, dry .....	1.480
Clay, wet.....	1.660
Clay and gravel, dry .....	1.420
Clay and gravel, wet.....	1.540

\* with add. counterweight (rear + sides)

# WHEEL LOADER

## STANDARD EQUIPMENT

- |  |  |  |   |
|--|--|--|---|
| <ul style="list-style-type: none"> <li>• Komatsu SAA6D125E-5 turbocharged common rail direct injection diesel engine, EU Stage IIIA/EPA Tier III compliant</li> <li>• Torque converter lock-up</li> <li>• Alternator 50 A/24 V</li> <li>• Starter motor 11 kW/24 V</li> <li>• Batteries 143 Ah/2 × 12 V</li> <li>• Counterweight</li> <li>• Electronically controlled, load stabiliser (ECSS) 2nd generation</li> <li>• Hydrostat-driven radiator fan with reversing function</li> <li>• 2-spool main control valve</li> <li>• PPC fingertip control, two levers</li> <li>• Central automatic lubrication</li> <li>• Fully hydraulic brake system</li> </ul> | <ul style="list-style-type: none"> <li>• Engine cooling fluid corrosion resistor</li> <li>• Water separator</li> <li>• Heavy-duty axles</li> <li>• Electronically controlled ECMV automatic transmission with mode selector and variable transmission cut-off</li> <li>• Working mode selection system</li> <li>• Komtrax™ Komatsu tracking system</li> <li>• EMMS (Equipment Management Monitoring System) with self-diagnostic function and maintenance display</li> <li>• SpaceCab™ ROPS/FOPS hyper viscous mounted cab with two doors, tinted</li> </ul> | <p>safety glass windows, front window wiper with intermittent feature, rear window wiper, sun visor, cigarette lighter, ashtray, luggage shelf, floor mat, hot and cool box, heated rear window, vertically and horizontally adjustable steering column, rear view mirror</p> <ul style="list-style-type: none"> <li>• Air-suspended, heated seat with seat belt (EU standard)</li> <li>• Air conditioning</li> <li>• CD-radio</li> <li>• 2 halogen main headlights</li> <li>• 2 spotlights at front and rear</li> <li>• Reversing light</li> <li>• Horn</li> <li>• Handrails on left/right</li> <li>• Front fenders</li> <li>• External fluid drains</li> </ul> | <ul style="list-style-type: none"> <li>• Emergency steering system</li> <li>• Vandalism protection</li> </ul> <p>The WA470-6 is equipped in accordance with the safety regulations of the machinery guidelines 89/392 EWG ff and EN474.</p> |
|--|--|--|---|

## OPTIONAL EQUIPMENT

- |   |  |   |  |
|---|--|---|--|
| <ul style="list-style-type: none"> <li>• High-lift equipment</li> <li>• Add. counterweight 400 kg</li> <li>• Heavy counterweight 1.085 kg for log grapple applications</li> <li>• 3-spool main control valve</li> <li>• Limited-slip differential (LSD) front and rear</li> <li>• Hydrostat-driven radiator fan with automatic reversing function</li> <li>• Joystick steering with integrated F/R transmission function, 2-stage</li> <li>• Tyres 26.5 R25 L2 - L5</li> <li>• Universal bucket 4,1 m<sup>3</sup></li> <li>• Universal bucket 4,25 m<sup>3</sup></li> <li>• Universal bucket 4,5 m<sup>3</sup></li> <li>• Universal bucket 4,65 m<sup>3</sup></li> <li>• Earthmoving bucket 4,2 m<sup>3</sup></li> <li>• Earthmoving bucket 4,35 m<sup>3</sup></li> </ul> | <ul style="list-style-type: none"> <li>• Stock pile bucket 4,6 m<sup>3</sup></li> <li>• Stock pile bucket 4,9 m<sup>3</sup></li> <li>• Heavy-duty bucket 4,1 m<sup>3</sup></li> <li>• Heavy-duty bucket 4,25 m<sup>3</sup></li> <li>• Light material bucket 6,0 m<sup>3</sup></li> <li>• Rock bucket 4,1 m<sup>3</sup></li> <li>• High dump bucket</li> <li>• Log grapples</li> <li>• Special buckets</li> <li>• Various tooth systems, BOC, segments, Komatsu Kmax/ KVX™ and other optional bucket accessories are available on request</li> <li>• Hydraulic quick coupler</li> <li>• Batteries 180 Ah/2 × 12 V</li> <li>• PPC control, 1-lever (Multi-function lever)</li> </ul> | <ul style="list-style-type: none"> <li>• Electronic 2-lever control (EPC) including:             <ul style="list-style-type: none"> <li>- Bucket stop modulation</li> <li>- Boom stop pre-setting</li> <li>- Semiautomatic dig function</li> </ul> </li> <li>• Filling tool for central lubrication system</li> <li>• Climate control</li> <li>• 12 Volt power supply</li> <li>• Sun roller blind</li> <li>• Back-up alarm</li> <li>• Beacon light</li> <li>• Roof rail</li> <li>• Additional lights front and rear</li> <li>• Cold area kit (engine and cab pre-heating)</li> <li>• Turbo II pre-filter</li> <li>• Electronic anti-theft lock</li> <li>• Full rear fenders</li> <li>• Battery main switch</li> </ul> | <ul style="list-style-type: none"> <li>• Fire extinguisher</li> <li>• Biodegradable oil for hydraulic system</li> <li>• Special paintwork</li> <li>• Anti-corrosion specification</li> <li>• Waste-handler specification</li> <li>• Tool-set</li> </ul> <p>Further equipments on request</p> |
|---|--|---|--|



**Komatsu Europe International NV**  
 Mechelsesteenweg 586  
 B-1800 VILVOORDE (BELGIUM)  
 Tel. +32-2-255 24 11  
 Fax +32-2-252 19 81  
 www.komatsueurope.com