

# KOMATSU

PRELIMINARY

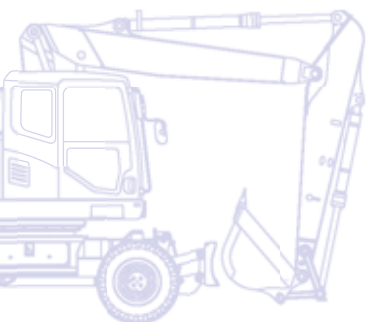
**PW**  
**180**



**KOMTRAX™**

Hydraulic Wheeled Excavator

## **PW180-7** **Fixed cab elevation**



ENGINE POWER  
116 kW / 156 HP @ 2.000 rpm

OPERATING WEIGHT  
19.500 kg

MAX. HORIZONTAL REACH  
8.500 mm

# Hydraulic Wheeled Excavator

## PW180-7 Fixed cab elevation

### ENGINE

Model ..... Komatsu SAA6D107E-1  
Type ..... Common rail direct injection, water-cooled,  
emissionised, turbocharged, after-cooled diesel  
Engine power  
at rated engine speed ..... 2.000 rpm  
ISO 14396 ..... 116 kW/156 HP  
ISO 9249 (net engine power) ..... 109 kW/146 HP  
No. of cylinders ..... 6  
Bore x stroke ..... 107 x 124 mm  
Displacement ..... 6,69 ltr  
Batteries ..... 2 x 12 V/120 Ah  
Alternator ..... 24 V/60 A  
Starter motor ..... 24 V/5,5 kW

### OPTIONAL EQUIPMENT

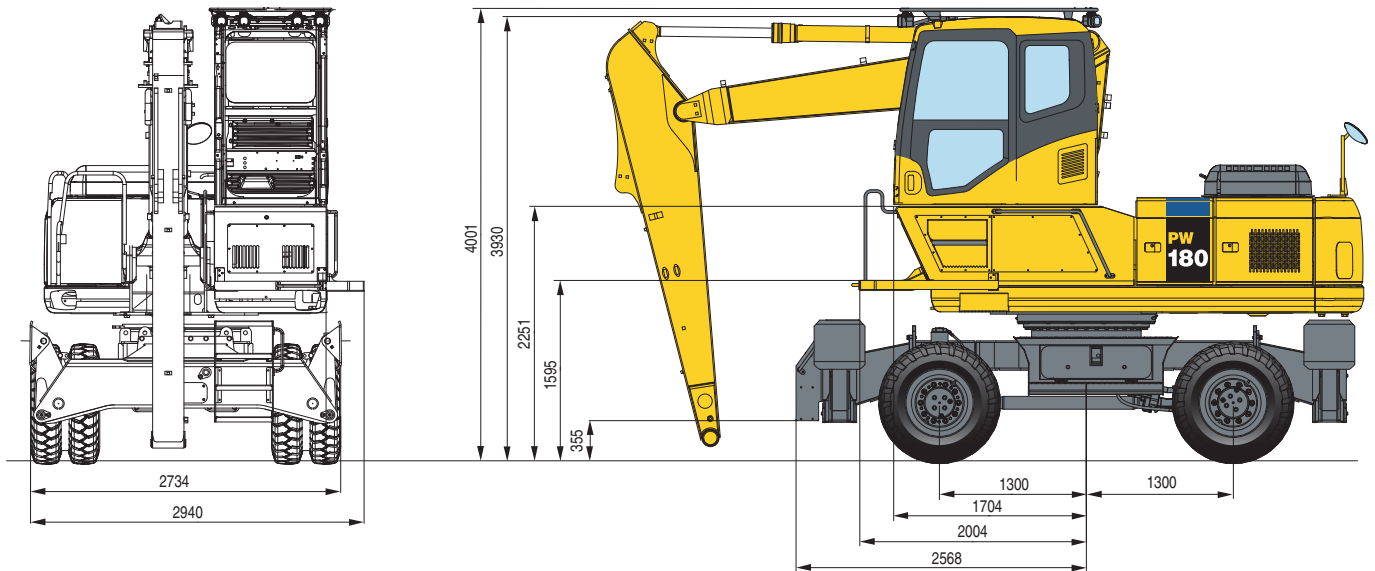
Tyres ..... Solid tyres 10.00-20 for industrial applications  
Air filter type ..... Turbo II double element type with monitor panel  
dust indicator and auto dust evacuator  
Cooling ..... Special "Cleanfix" type cooling fan  
with automatic fan blade adjustment  
and automatic cleaning program  
Sealed alternator ..... 24 V/80 A

### HYDRAULIC SYSTEM

Type ..... HydraMind. Closed-centre system with load sensing  
and pressure compensation valves  
Main pump ..... Variable displacement piston pump supplying  
boom, arm, bucket, swing and travel circuits  
Maximum pump flow ..... 252 ltr/min  
Relief valve settings  
Implement ..... 380 bar  
Travel ..... 380 bar  
Swing ..... 280 bar  
Pilot circuit ..... 37 bar

### WORK EQUIPMENT

Max. height (pin) ..... 9.130 mm  
Max. reach (pin) ..... 8.500 mm  
Max. depth (pin) ..... 4.850 mm  
Min. swing radius ..... 3.510 mm  
Max. lifting capacity ..... 7.925 kg  
Outriggers front and rear ..... standard



– PRELIMINARY VERSION. ALL DATA NON-BINDING. –