



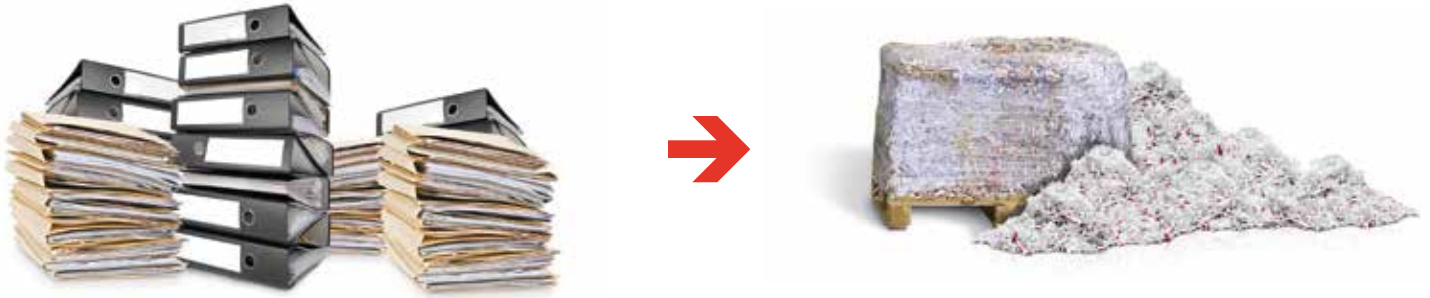
HSM shredder baler systems

for industrial and professional data shredding

Misuse of data causes millions in damages!

Dealing with files and documents is something you do on a daily basis and everyone is very conscious of the need to act responsibly. However, data leaks increasingly occur which could be detrimental to the reputation of government offices, institutions and companies or lead to financial loss. These risks can be avoided with professional document shredders

which are exactly tailored to your requirements and shred your files reliably. This is ensured by HSM quality with its sophisticated cutting unit technology and tried-and-tested around the world. HSM stands for experience, expertise and quality, in other words we want to make you and your company to feel secure.



HSM – the professionals for high security!

HSM offers the largest range of document shredders for all areas of application. In the large shredder sector, countless government offices, personnel departments and banks have been equipped with HSM machines during the company history of 45 years. All HSM customers base their trust in HSM security on the following:

- outstanding product quality
- user-oriented technology and innovation
- the link between expertise in document shredding and in volume reduction of materials through the baling press company division
- first-class HSM service

HSM quality “Made in Germany”

HSM has always adhered to quality principles, whether in development and construction, production, project planning or service. All HSM plants are certified according to DIN EN ISO 9001 and work towards the creation of long-lasting products that retain the value of the HSM brand long into the future.

The clear belief in German production is a part of the responsibility that comes with being an integral part of the regional community. In HSM manufacturing plants, motivated and highly-skilled professionals are dedicated to securing the longterm success of HSM.





The key points of first-class service

Customer service

- 1 year warranty period on the use of HSM systems in a single shift operation or 6 months in a multi-shift operation.

Consulting and training

- Individual advice on products by our staff – on the phone, by e-mail or on-site
- HSM as your partner for individual project planning – for systems which are directly tailored to your requirements.
- Advice on data protection in companies and government offices.
- Advice on various financing models.
- Service support and advice on spare part requirements.

After-Sales-Service

- Worldwide support for the punctual delivery of spare parts and service order processing.
- Specially agreed HSM service contracts including regular maintenance and inspections.

Consumable materials

- HSM provides you with everything you need for continuous use: reusable plastic bags, special cutting unit oil, cardboard boxes and polyester tape.

High security with small strips and particles.

Security levels in accordance with DIN 66399.

The document shredders from the HSM shredder press combinations, Duo and TriShredder series make your confidential documents and personal data illegible – at different security levels. A DIN standard defines five security levels which ensures a high level of security from level to level.

Security level P-2 (strips): For internal/in-house documents that are to be rendered illegible, such as computer print-outs or unusable photocopies.

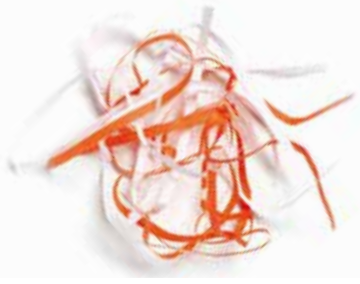
Security level P-3 (particles): For confidential documents, such as personal-related data and documents.

Security level P-4 (particles): For particularly sensitive and confidential data subject to a higher level of confidentiality such as balance sheets, personnel data or medical reports.

Security level P-5 (particles): For highly confidential information of crucial importance to a person, company or institution.

Security level P-2

Strip cut, max. 6 mm



Security level P-3

Particle cut, max. 320 mm²



Security level P-4

Particle cut, max. 160 mm²



Security level P-5

Particle cut, max. 30 mm²

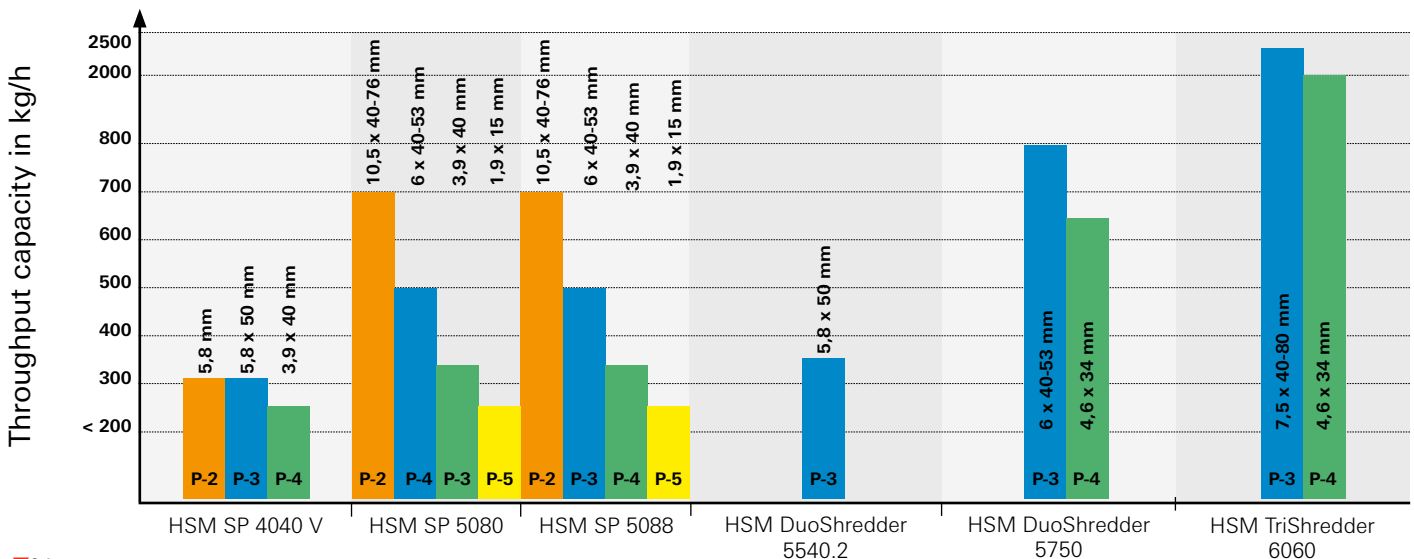


Select the shredder system that is right for you.

When selecting the shredder press combination or the Duo or TriShredder, the following criteria must be considered:

- What are the security requirements? (security levels)
- How much material will be shredded per hour? (throughput capacity in kg / h)

You can select a suitable HSM machine in the product finder below. It is always essential to pay attention to quality when purchasing a machine. For instance, the cutting rollers made of solid steel, a well-designed drive and the high level of user safety – all product features you can find in every HSM machine.





HSM SP 4040 V



SP 4040 V: View from the rear with the door open.

HSM shredder baler combinations. The result: compact security.

HSM SP 4040 V

- Combination device (FA 400.2 and KP 40V): especially compact and space-saving vertical design for high loading and easy operation.
- Material intake via loading table and electric conveyor belt.
- Document shredder with keypad for continuous and reverse operation, as well as automatic reverse in the event of a paper jam.
- Shredding and pressing conducted simultaneously.
- Integrated, manual oiler for the cutting unit (particle cut version only).
- Press with modern control unit and removal trolley for box or waste bag (standard equipment: 5 boxes, 5 plastic bags, bag holder).
- Display to indicate "bale ready".

Dimensions of the machine (W x D x H) in mm	1090 x 2030 x 1970		
Cutting size in mm	5,8	5,8 x 50	3,9 x 40
Security level DIN 66399	P-2 / O-2 / T-2 / E-2	P-3 / O-2/ T-3 / E-2	P-4 / O-3 / T-4 / F-1
Cutting capacity* 80g/m2 in sheets	104	96	80
Throughput capacity* 80g/m2 in kg/h	320 - 265		
Working width in mm	428		
Motor power kW	4 (document shredders)		
Motor power kW	2,2 (baling press)		
Pressing power in kN	44		
Bale weight in kg	25 - 35		
Bale (W x H x L) in mm	600 x 500 x 400		

* DIN A4

All technical data and dimensions are approximate values. Technical and design modifications reserved.



HSM SP 5080



HSM combined shredder baler machines

HSM SP 5080

- Extremely high-performance conveyor belt document shredder combined with convenient, space-saving baling press (FA 500.3 and KP 80).
- Material intake via large loading table and electric conveyor belt.
- Multi-functional operating and display element for continuous and reverse operation, as well as automatic reversing for paper jams.
- Modern PLC press control unit with multi-language display and convenient menu navigation. Automatic photoelectric control of the pressing process.
- Shredding and pressing conducted simultaneously.
- Integrated, automatic oiler for the cutting unit.
- Material compressed directly in the waste bag (standard equipment: 5 plastic bags).
- Display to indicate operating status and “bale ready”
- Integrated emergency-stop rail on the table for more safety.

Dimensions of the machine (W x D x H) in mm	1168 x 2398 x 1795				
Cutting size in mm	10,5x40-76	7,5x40-76	6x40-53	3,9x40	1,9x15
Security level DIN 66399	P-2 / O-2 / T-2 / E-2	P-3 / O-2 / T-3 / E-2	P-3 / O-2 / T-3 / E-2	P-4 / O-3 / T-4 / E-3 / F-1	P-5 / O-4 / T-5 / E4 / F-2
Cutting capacity* 80g/m ² in sheets	510-550	425-470	340-380	180-200	90-100
Throughput capacity* 80g/m ² in kg/h	700	600	500	330	250
Working width in mm	500				
Motor power kW	7,5	7,5	7,5	7,5	5,5 + 4
Motor power kW	4 (baling press)				
Pressing power in kN	80				
Bale weight in kg	40 - 80				
Bale (W x H x L) in mm	570 x 490 x 800				

* DIN A4

All technical data and dimensions are approximate values. Technical and design modifications reserved.



HSM SP 5088



Operating element FA 500.3

HSM SP 5088

- Extremely high-performance conveyor belt document shredder combined with baling press (FA 500.3 and KP 88).
- Material intake via large loading table and electric conveyor belt.
- Keypad for continuous and reverse operation, as well as automatic reverse in the event of a paper jam.
- PLC press control unit with multi-language display and convenient menu navigation.
- Automatic photoelectric control of the pressing process.
- Shredding and pressing conducted simultaneously.
- Automatic oiler for the cutting unit.
- Press with filling hatch / inspection hatch for adding non-sensitive material or boxes separately.
- Manual, 3-fold strapping with continuous polyester strapping. Standard equipment with polythene bag attachment (standard equipment: 5 plastic bags).
- Display to indicate "bale ready".

Dimensions of the machine (W x D x H) in mm	1246 x 3222 x 1795				
Cutting size in mm	10,5x40-76	7,5x40-76	6x40-53	3,9x40	1,9x15
Security level DIN 66399	P-2/O-2/ T-2/E-2	P-3/O-2/ T-3/E-2	P-3/O-2/ T-3/E-2	P-4/O-3/ T-4/E-3/F-1	P-5/O-4/ T-5/E-4/F-2
Cutting capacity* 80g/m2 in sheets	510-550	425-470	340-380	180-200	90-100
Throughput capacity* 80g/m2 in kg/h	700	600	500	330	250
Working width in mm	500				
Motor power kW	7,5	7,5	7,5	7,5	5,5 + 4
Motor power kW	4 (baling press)				
Pressing power in kN	85				
Bale weight in kg	70 - 90				
Bale (W x H x L) in mm	500 x 500 x 400-950				

* DIN A4

All technical data and dimensions are approximate values. Technical and design modifications reserved.



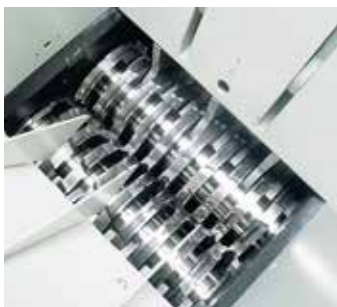
HSM DuoShredder 5540.2

HSM multiple stage shredder systems – security for large amounts of files

HSM DuoShredder 5540.2

The HSM DuoShredder 5540.2 is a two-stage shredder system for fully automatic document disposal. Depending on the paper quality, loading and downstream systems, it can achieve a throughput of up to 350 kg per hour. In combination with an HSM baling press, you can expand the HSM DuoShredder 5540.2 into a complete disposal system. We recommend the following baling press models: HSM KP 100.1 and HSM KP 88.1.

- Sturdy loading hopper with built-in overloading protection to control the shredder and the conveyor belt.
- Stage 1: pre-shredding using a two-shaft system for improved material intake.
- Light barrier monitors filling level between stages 1 and 2 to prevent overloading.
- Stage 2: fine shredding using a two-shaft system.
- Optionally available with material collection trolley for solo operation, volume approx. 320 litres.
- Optionally available with electrohydraulic pre-compactor to remove jams in the hopper; the material to be shredded is automatically pushed against the cutting rollers.
- Maximum speed due to optimum way the coordination of the cutting units has been designed, economical start-up operation and overload protection through a frequency inverter.



Cutting unit stage 1: Pre-shredder



Cutting unit stage 2: downstream shredder

Cutting size in mm	1 st stage: 20 x 155 2 nd stage: 5,8 x 50
Security level DIN 66399	P-3 / O-2 / T-3 / E-2
Cutting capacity in kg/h	up to 350
Working width in mm	400
Motor power kW	Stage 1 = 4 / Stage 2 = 5,5
Dimensions of the machine (W x D x H) in mm	1421 x 832 x 2500mm

All technical data and dimensions are approximate values. Technical and design modifications reserved.

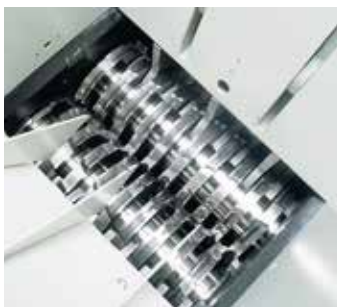


HSM DuoShredder 5750

HSM DuoShredder 5750

Two-stage, fully automatic document disposal system. Depending on the type of material, it can achieve an efficient throughput of up to 800 kg per hour. In combination with an HSM baling press, you can expand the HSM DuoShredder 5750 into a complete disposal system. We recommend the following baling press models: HSM KP 100.1, HSM KP 88.1 and other fully automatic presses.

- Sturdy loading hopper with built-in overloading protection to control the shredder and the conveyor belt.
- Stage 1: pre-shredding using a four-shaft system consisting of two intake shafts and two cutting shafts.
- Light barrier monitors filling level between stages 1 and 2 to prevent overloading.
- Stage 2: fine shredding using a two-shaft system.
- Light barrier monitors filling level after stage 2 to prevent overloading.
- Robust frame construction with service and maintenance doors.
- Optionally available with material collection trolley for solo operation, volume approx. 320 litres.
- Maximum speed due to the optimum coordination of the cutting unit. Designed with economical start up operation and overload protection through a frequency inverter.



Cutting unit stage 1: Pre-shredder



Cutting unit stage 2: downstream shredder

Cutting size in mm	1 st stage: 20 x 155 2 nd stage: 6 x 40-53	1 st stage: 20 x 155 2 nd stage: 4,6 x 34
Security level DIN 66399	P-3/O-2/T-3/E-2	P-4/O-3/T-4/E-3/F-1
Cutting capacity in kg/h	up to 800	up to 650
Working width in mm	500	500
Motor power kW	Stage 1 = 2 x 5,5 / Stage 2 = 7,5	
Dimensions of the machine (W x D x H) in mm	1940 x 1430 x 3900	

All technical data and dimensions are approximate values. Technical and design modifications reserved.



HSM TriShredder 6060

HSM multiple stage shredder systems

HSM TriShredder 6060

HSM TriShredder-6060-3-stage shredding unit with three cutting units and a throughput of up to 2500 kg/h at security level P-3. In combination with a baling press, you can expand the HSM TriShredder 6060 into a complete disposal system.

- Robust loading hopper for passing material from the conveyor belt to the HSM V 600 pre-shredder.
- Light barriers for system control.
- Stage 1: pre-shredding using a four-shaft system consisting of two intake shafts and two cutting rollers.
- Stages 2 and 3: fine shredding using a two-shaft system.
- Modern PLC control unit for integrated control of all system components.
- Optionally available with extension mechanism for 2nd and 3rd shredder stage for setting the required particle size.
- Maximum speed due to optimum way the coordination of the cutting units has been designed, economical start-up operation and overload protection through a frequency inverter.

Cutting size in mm	1 st stage: 25 x 160-200 2 nd stage: 10,5 x 40-76 2 nd stage: 7,5 x 40-80	1 st stage: 25 x 160-200 2 nd stage: 10,5 x 40-76 2 nd stage: 4,6 x 34
Security level DIN 66399	P-3 / O-2 / T-3 / E-2	P-4 / O-3 / T-4 / E-3 / F-1
Cutting capacity in kg/h	up to 2.500	up to 2.000
Working width in mm	650	650
Motor power in kW	1 st stage: 2 x 11	2 nd stage: 2 x 7,5 3 rd stage: 2 x 7,5
Dimensions of the machine (W x D x H) in mm	1940 x 1430 x 3900	

All technical data and dimensions are approximate values. Technical and design modifications reserved.

Technical data

Model	HSM SP 4040 V			HSM SP 5080				HSM SP 5088			
	Strips	Particle		Particle cut				Particle cut			
Cutting size in mm	5.8	5.8x50	3.9x40	10.5x40-76	6x40-53	3.9x40	1.9x15	10.5x40-76	6x40-53	3.9x40	1.9x15
Security level DIN 66399 *	P-2	P-3	P-4	P-2	P-3	P-4	P-5	P-2	P-3	P-4	P-5
Cutting performance** 80 g/m ² in sheets	104	96	80	510-550	340-380	180-200	90-100	510-550	340-380	180-200	90-100
Throughput capacity in kg/h DIN A4 80g/m ²	320	320	265	700	500	330	250	700	500	330	250
Cutting speed in mm/s	210	230	230	210				210			
Working width in mm	428			500				500			
Motor in kW (document shredder)	4.0			7.5		5.5 + 4		7.5		5.5 + 4	
Motor in kW (baling press)	2.2			4.0				4.0			
Voltage / frequency	3 x 400 V / 50 Hz			3 x 400 V / 50 Hz				3 x 400 V / 50 Hz			
Pressing power in kN	44			80				85			
Max. bale size in mm (W x D x L)	600 x 500 x 400			570 x 490 x 800				500 x 500 x 400-950			
Bale weight in kg (depending on material)	25 - 35			40 - 80				70 - 90			
Hourly output in bales/boxes (depending on material)	6-8			8-10	6-8	4-6	3-5	8-9	6-7	4-5	3-4
Machine dimensions in mm (W x D x H)	1090 x 2030 x 1970			1168 x 2398 x 1795				1246 x 3222 x 1795			
Machine weight in kg	737			1,350	1,350	1,350	1,480	1,660	1,660	1,660	1,790

* for medium paper ** max. per cycle

Model	HSM DuoShredder 5540.2	HSM DuoShredder 5750		HSM TriShredder 6060		
	Working width in mm	500		650		
Security level DIN 66399	P-3 / O-2 / T-3 / E-2	P-3 / O-2 / T-3 / E-2	P-4 / O-3 / T-4 / E-3 / F-1	P-3 / O-2 / T-3 / E-2	P-4 / O-3 / T-4 / E-3 / F-1	
Particle size after stage 1 (mm)	20 x 155	20 x 155	20 x 155	25 x 160 - 200	25 x 160 - 200	
Particle size after stage 2 (mm)	5.8 x 50	6 x 40 - 53	4.6 x 34	10.5 x 40 - 76	10.5 x 40 - 76	
Particle size after stage 3 (mm)	-	-	-	7.5 x 40 - 80	4.6 x 34	
Throughput in kg/h (depending on material)	up to 350	up to 800	up to 650	up to 2.500	up to 2.000	
Motor in kW	Stage 1 = 4 / Stage 2 = 5.5	Stage 1 = 2 x 5.5 / Stage 2 = 7,5		Stage 1: 2 x 11 Stage 2: 2 x 7,5 Stage 3: 2 x 7,5		
Voltage / frequency	3 x 400 V / 50 Hz		3 x 400 V / 50 Hz		3 x 400 V / 50 Hz	
Dimensions of machine (W x D x H) in mm*	1421 x 832 x 2500		1900 x 1200 x 3300		1940 x 1430 x 3900	
Machine weight in kg*	1,150		2,500		4,000	

* depending on version supplied for project

Explanations of the technical data:

Cutting type	The material is shredded into either strips or particles.
Cut size	Dimension of the strips or particles of the shredded material (depending on the paper quality).
Security levels	In accordance with DIN 66399
Cutting power*	The max. number of sheets (DIN A4, 80 g/m ²), fed lengthways, with the motor cold and cutting unit oiled, which can be cut on one cycle.
Throughput	Max. volume that can be shredded in one hour.
Cutting speed	This is calculated on the basis of the external diameter and speed of the cutting rollers in idle operation.
Working width	Maximum effective width of the feed opening.
Motor	Power consumption of the document shredder motor at maximum cutting capacity* (see above) Power consumption of the press motor in normal operation.
Voltage / frequency	Three-phase/alternating current power supply.
Pressing power	Piston cylinder surface multiplied by the maximum hydraulic pressure (theoretical value).
Bale size	The length/height of the bales varies according to the expansion force of the compressed material.
Bale weight	The bale weight varies depending on the type, moisture and condition of the compressed material and the bale length or height.
Hourly throughput	The hourly output depends on the type and quantity of the material to be pressed and on the number of persons loading the machine.
Dimensions of the machine	External dimensions of the machine when set up for operation.
Machine weight	Net weight of the machine without packaging and loaded material and with no optional equipment.

HSM – the company

Cutting. Shredding. Compressing.



Since 1971, HSM has been pursuing a clear strategy – a consistent commitment to quality “Made in Germany”. This product and service quality is the key to success in both the office technology and environmental technology business sectors. As a specialist for products and services for data protection as well as technologies for optimising logistics and recycling processes, HSM is one of the world’s leading providers.

Enquire now! We are always glad to help.

Head office in Germany:

HSM GmbH + Co. KG · Austraße 1-9 · 88699 Frickingen / Germany
Tel. +49 7554 2100-0 · Fax +49 7554 2100-160
info@hsm.eu · www.hsm.eu

E-Mail / hotline:

Gratis Hotline
DE, AT, BE, NL, LU, IT
Tel. 00800 44 77 77 66
Fax 00800 44 77 77 67

HSM Vertrieb Deutschland
Deutschland@hsm.eu

HSM Vertrieb Österreich
Austria@hsm.eu

HSM Vertrieb Schweiz
Schweiz@hsm.eu

HSM Verkoop België, Nederland,
Luxemburg
Benelux@hsm.eu

HSM Salgs Support Danmark
Danmark@hsm.eu

HSM Commerciale Italia
Italia@hsm.eu

HSM subsidiaries:

HSM Técnica de Oficina
y Medioambiente, España, S.L.U.
C/Tona
Nave nº 15 “El Lago”
Pol. Ind. Monguit
08480 L’Ametlla del Vallès
Barcelona
Espana (Spain)
Tel. +34 93 8617187
Fax +34 93 8463417
Spain@hsm.eu
www.hsm.eu

HSM France SAS
Parc de Genève
240, Rue Ferdinand Perrier
69800 Saint-Priest
France
Tél. +33 472 210580
Fax +33 472 517481
France@hsm.eu
www.hsm.eu

HSM of America LLC
419 Boot Road
Downingtown
PA 19335
USA
Tel. +1 484 237-2308
+1 800 613-2110
Fax +1 484 237-2309
customerservice@hsm.us
info@hsm.us
www.hsm.us

HSM (UK) Ltd.
14 Attwood Road / Zone 1
Burntwood Business Park
Burntwood · Staffordshire
WS7 3GJ
United Kingdom
Tel. +44 1543 272-480
Fax +44 1543 272-080
info@hsmuk.co.uk
www.hsm.eu

HSM Polska Sp. z o.o.
ul. Emaliowa 28
02-295 Warsaw
Polska (Poland)
Tel. +48 22 862-2369
Fax +48 22 862-2368
Handlowy@hsm.eu
www.hsm.eu