

# Energy loss in a food factory

---



---

**Company**      A Food Manufacturer      Tester:  
Testo

---

**Device**      testo 882      Serial No.: 2528031  
Lens:      Standard 32°

---

**Customer**      Technical Manager      Measuring Site:  
Site

---

**Task**      Thermal Survey

# Energy loss in a food factory

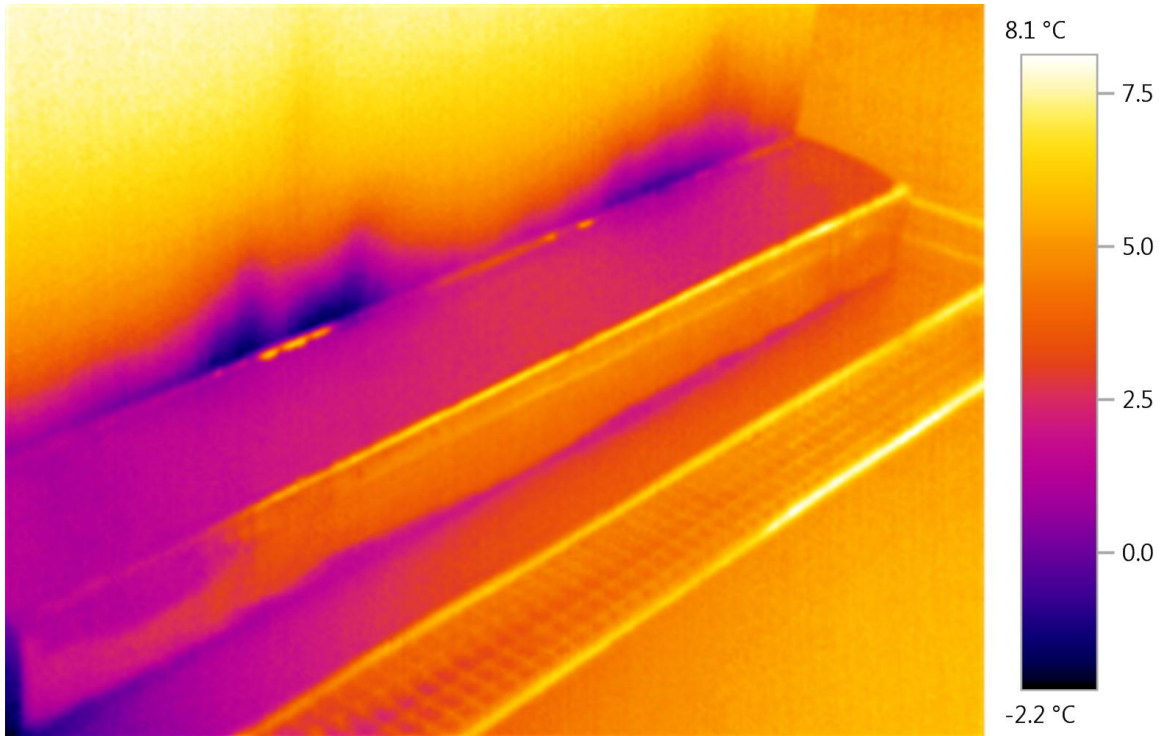
**File:** External Chiller Wall with Faulty Seal.BMT

**Date:** 07/06/2011

**lens type:** Standard 32°

**lens serial no.:** 20338216

**Measuring Time:** 21:55:18



**Picture parameters:**

**Emissivity:** 0.95

**Refl. temp. [°C]:** 20.0



# Energy loss in a food factory

**File:** Chiller Door - Innefective Seal - Top Left.BMT

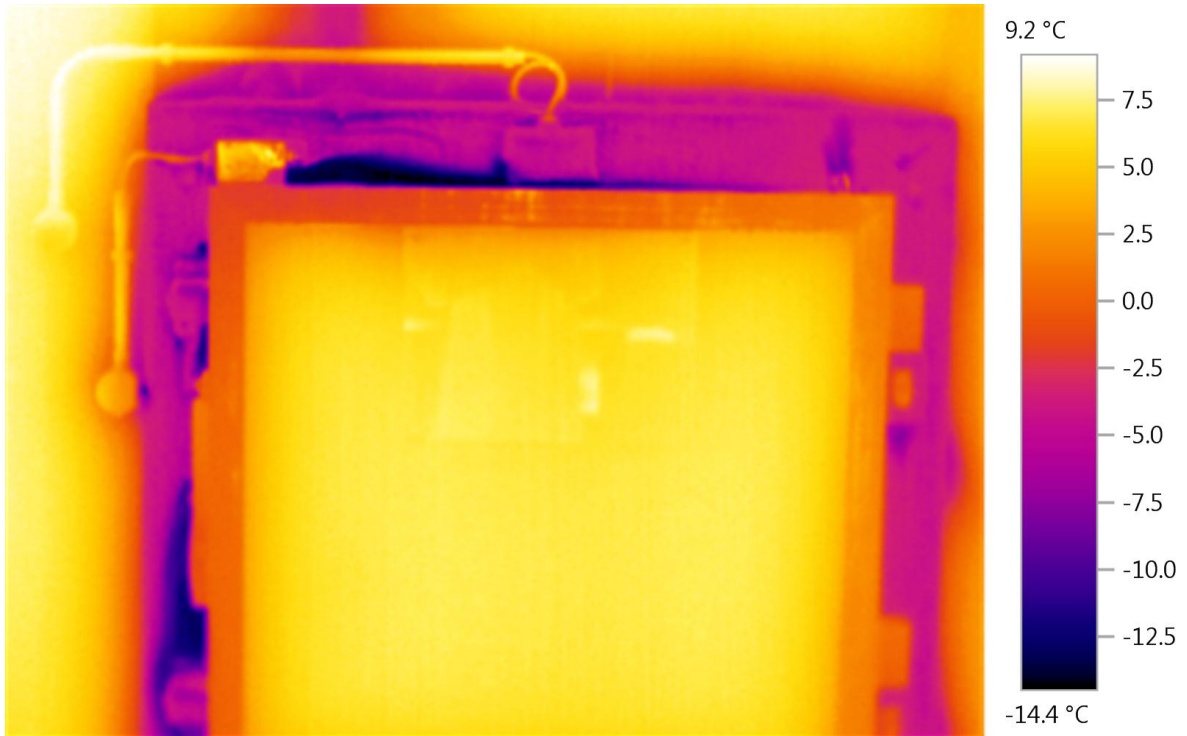
**Date:** 07/06/2011

**lens type:** Standard 32°

**lens serial no.:** 20338216

**Measuri** 21:52:34

**ng Time:**



**Picture parameters:**

**Emissivity:** 0.95

**Refl. temp. [°C]:** 20.0



# Energy loss in a food factory

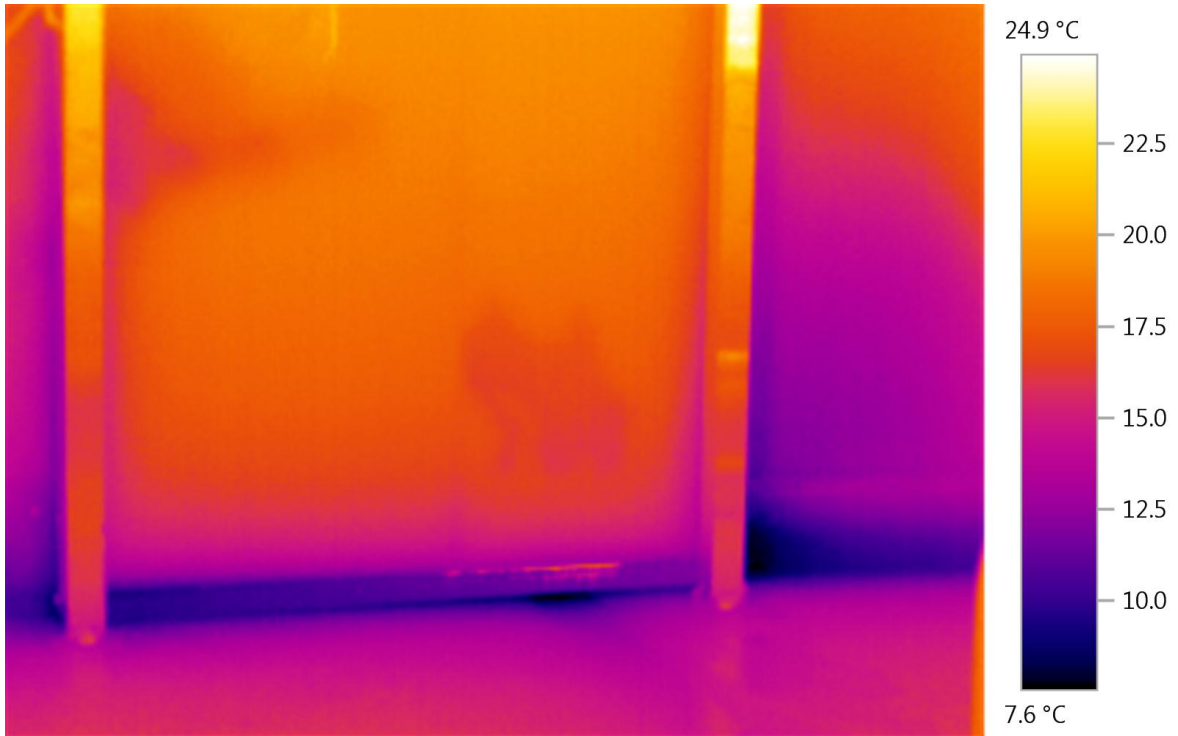
**File:** Feezer Door - Cold Air Escaping Bottom Left.BMT

**Date:** 07/06/2011

**lens type:** Standard 32°

**lens serial no.:** 20338216

**Measuring Time:** 21:26:46



**Picture parameters:**

**Emissivity:** 0.95

**Refl. temp. [°C]:** 20.0



# Energy loss in a food factory

File: Freezer Door 3.BMT

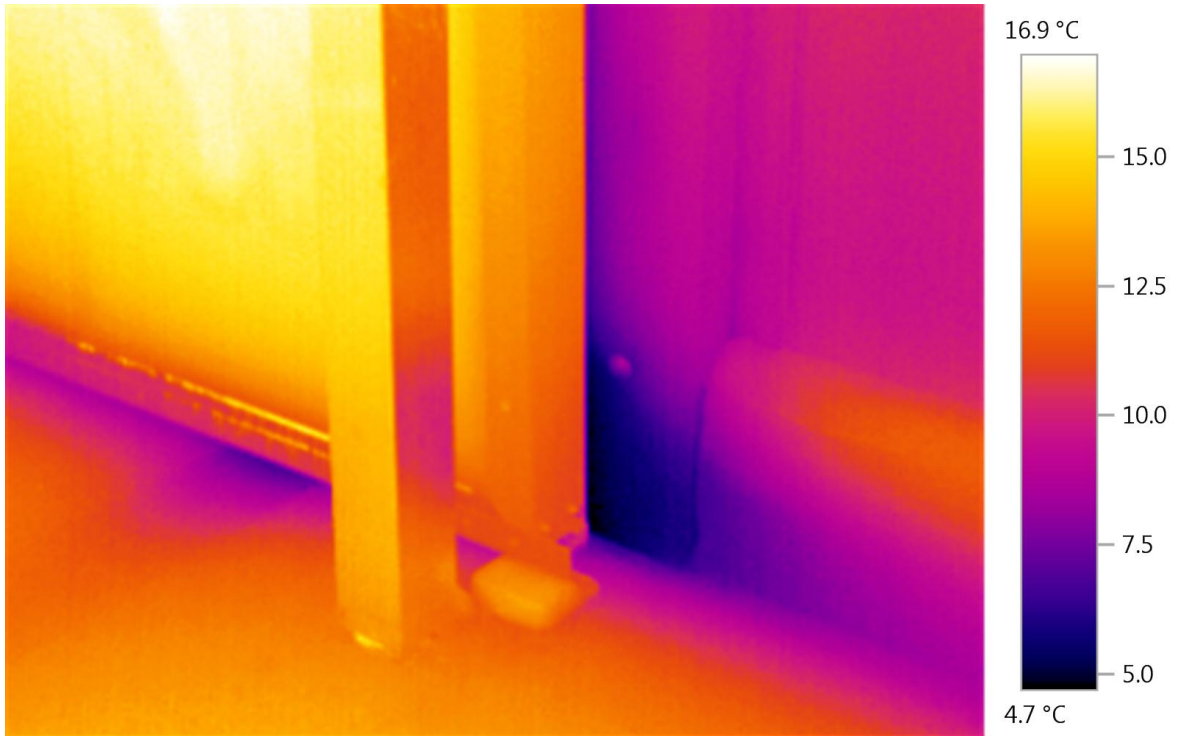
Date: 07/06/2011

lens type: Standard 32°

lens serial no.: 20338216

Measuring Time: 21:25:14

ng Time:



Picture parameters:

Emissivity: 0.95

Refl. temp. [°C]: 20.0



---

## Review:

The report clearly show area's where energy is being lost through defective seals.

---

29/10/2013 ,

\_\_\_\_\_  
Testo