

E X C L U S I V E S A F E T Y

TORTEROLO & RE

ARMOUR-PLATED DOORS

pininfarina LINE

TORTEROLO & RE MAKES ITS DEBUT INTO THE WORLD OF DESIGN

Dream, Wave and Shield, conceived in collaboration with Pininfarina, make armoured doors enter the world of design. This exclusive collection represents, as a matter of fact, an important stage in the stylistic evolution of the armoured door, because it reinvents the concept of safety through an ideal relationship between shape and function. In this way, Dream, Wave and Shield achieve the same perfect synthesis between formal research and structural techniques that, since the early nineteen hundreds, has characterized the project elaboration and realization of a great amount of common use objects, many of which, although produced in series, are today displayed in the showcases of the Museum of Modern Art in New York.

THEY FURNISH PROTECTION, THEY TRASMIT EMOTIONS

Design means innovation both from a technological perspective and in terms of production processes, along with a symbolic solution. Therefore – each with technical peculiarities and distinct styles – Dream, Wave and Shield express the highest contents in terms of security with essential shapes, materials and colours, all capable of communicating emotions and aesthetical pleasure. Pure and essential lines, fluid fittings, uncommon colours and materials: through traits that anticipate the future, without ignoring the roots derived from the present, their esthetical language – new in the sector – is gifted with features that transcend the mere functions of defence from intrusion, thus representing something that is, by far, more symbolic.

DESIGN BY PININFARINA

Dream, Wave and Shield are designed by Pininfarina, who claims seventy five years of leadership in the world of style, in project elaboration and in car production, with a history rich with success in the unremitting quest to combine functionality and imagination. The ideal partner, not only because of it's predominant role in modern design, but also for its ability to elaborate every product characteristic that facilitates the engineering and production processes, therefore finding structural and constructive solutions.

"The line, the shape, must become substantial, living material, and in that evolution the obstacles are numerous and of various nature": Pinin Farina used to make this statement referring to cars, but the concept can be easily transferred to armoured doors too, where fundamental structural elements must blend with imagination in a functional manner: this is how hinges become imperceptible to sight, how door handles are integrated into sinuous folds, and how volumes are softened by colour.

// *The line must become substantial,
living matter* //

(Pinin Farina)

TORTEROLO & RE

ARMOUR-PLATED DOORS

pininfarina



dream



wave



shield



*Sections and folds like
the profile of a sports
car ...
a soft arch cuts the
colour.*

Sections and folds resemble the profile of a sports car, and the colours – ranging from red and yellow to shiny metallized Indian blue, to metallized opaque metallic silver – enrich their charm. A soft arch – half-moon shaped – retraces the smooth surface longitudinally, imprinting the colour: the leaf acquires a three dimensional form in a plastic play of volumes. The distinctive features of the Pininfarina design are also visible in the aluminium integrated door handle.

d r e a m



dream STANDARD DOOR

Creative but also classical: on the outside the "Dream" panel displays its very personal traits, while internally the door appears soberly smooth, always in the same colour, with the Daytona handle.

STANDARD EQUIPMENT:

- Security lock with gear movement.
- Security cylinder with magneto-mechanical coding activated from internal side with a knob.
- Shiny Chrome high resistance hinges adjustable in height and width.
- Double sheet in galvanized steel structure.
- Internal cut-proof vertical supports.
- Draught excluder.
- Door retainer.
- Internal thermo acoustic insulation made of fire-proofing material.
- Fixed rectangular pins that enter in the frame at the closing of the door leaf.
- Soft seal in the internal folded sheet for air, dust and noise insulation.
- Frame and false frame in 20/10 ribbed steel sheet, adjustable in height and in width.
- "Daytona" interior door handle in shiny or mat chrome.
- Standard net span: 209 x 89,5 cm.

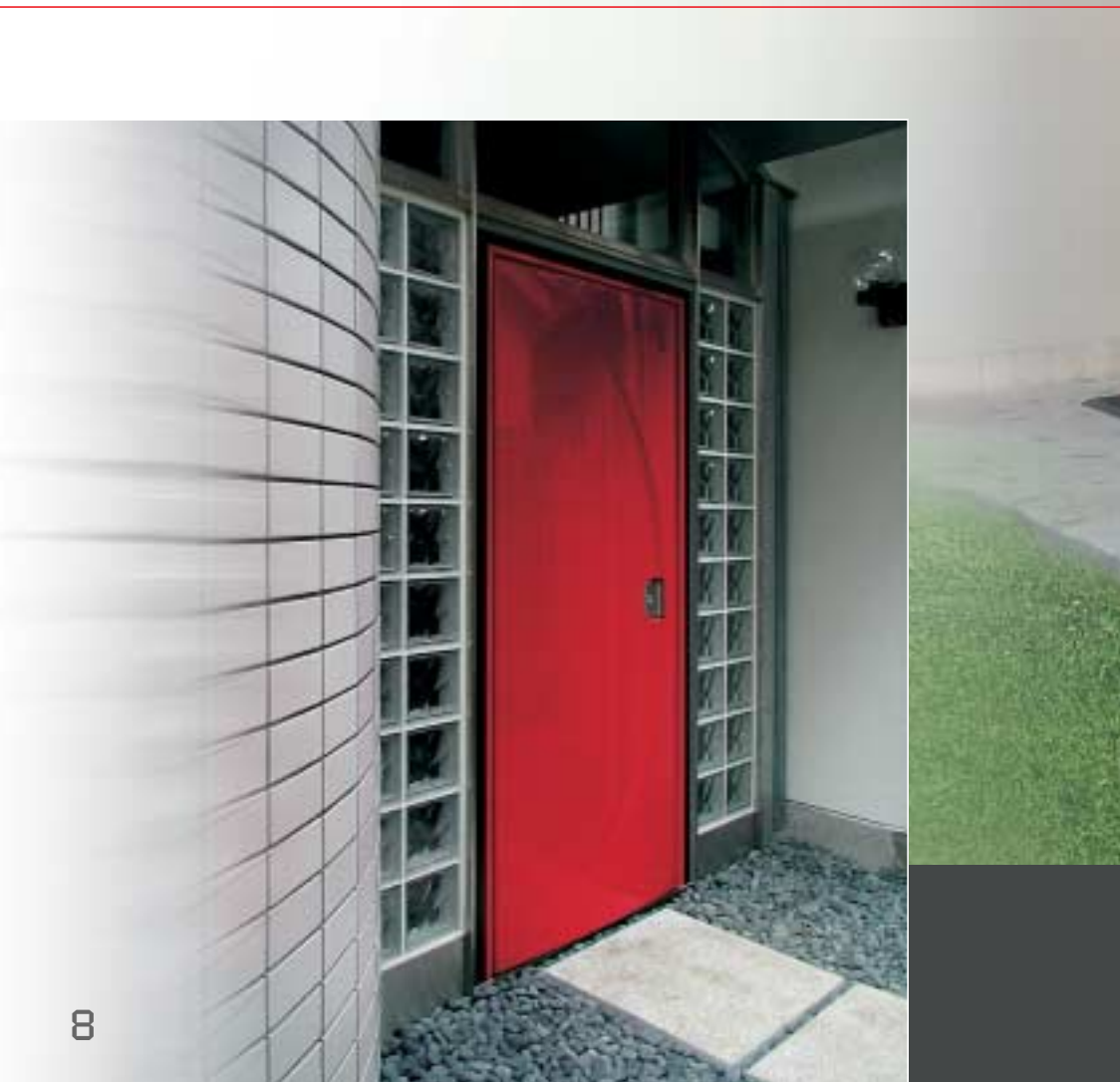


dream DOOR

The "Dream" panel on the outside of the door accentuates its strong personality, making it an essential design piece.

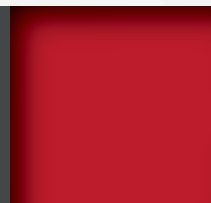
dream ENTRANCE

In addition to the fanlight, various kinds of lateral fixed parts can be applied and combined with armoured glass – metal structure with standard steel lacquering, or in the same colour as the door – on one or both sides of the door.



d r e a m COATINGS LACQUERED IN SCRATCH-PROOF POLYESTER PLATING.

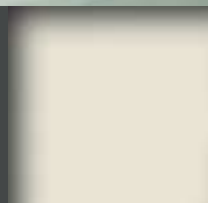
As audacious as the bright metallized Indian blue, as reassuring as the metallized bright anthracite grey, as refined as the metallized opaque silver, or as inconfundable as the Ferrari red and yellow, the colours are essential elements of the Dream armoured door.



SHINY FERRARI RED



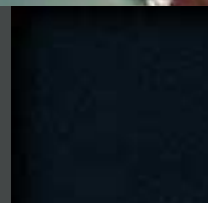
SHINY FERRARI YELLOW



SHINY PEARL WHITE



SHINY METALLIZED INDIAN BLUE



SHINY METALLIZED ANTHRACITE GREY



OPAQUE METALLIZED SILVER



*A soft reflection of
light ...
a wave swells
a calm
sea of colour...*



A rigorously smooth surface curled by a luminous light beam. In the Wave armoured door, it is the door handle that captures the attention first: unconventional and uncommon in its form and dimension, it resembles a metallic wave in a sea of colour. From blue to metallized grey, from yellow or Ferrari red to the metallized silver. The harshness of the metal is softened by the flexible arched movement, and the handle is transformed – as a rational and traditional emblem of door – into an innovative element of charm.

w a v e

w a v e DOOR

STANDARD EQUIPMENT:

- Security lock with gear movement.
- Security cylinder with magneto- mechanical coding activated from internal side with a knob.
- Shiny Chrome high resistance hinges adjustable in height and width.
- Double sheet in galvanized steel structure.
- Internal vertical cut-proof reinforcement.
- Draught excluder.
- Door retainer.
- Internal thermo acoustic insulation made of fire-proofing material.
- "Daytona" interior door handle in satin, shiny or mat chrome.
- Fixed rectangular pins that enter in the frame at the closing of the door leaf.
- Soft seal in the internal folded sheet for air, dust and noise insulation.
- Frame and false frame in 20/10 ribbed steel sheet, adjustable in height and in depth.
- Standard net span: 209 x 89.5 cm; 209 x 84.5 cm; 209 x 79.5 cm. On demand, the door is available with single or double leaves.

w a v e ENTRANCE

In addition to the fan-light, various kinds of lateral fixed parts can be applied and combined with armoured glass – metal structure at sight with standard metallized lacquering, or in the same colour as the door – on one or both sides of the door.

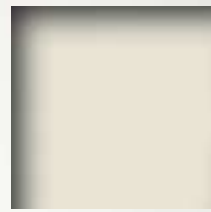




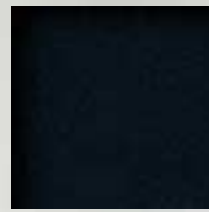
SHINY FERRARI RED



SHINY FERRARI YELLOW



SHINY PEARL WHITE



SHINY METALLIZED ANTHRACITE GREY



OPAQUE METALLIZED SILVER



SHINY METALLIZED INDIAN BLUE



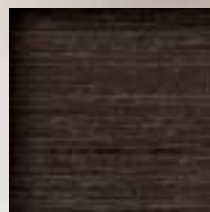
SHINY METALLIZED GREEN

Wave PANELS LACQUERED IN SCRATCH-PROOF POLYESTER OR IN THE WARM ESSENCES OF WOOD.

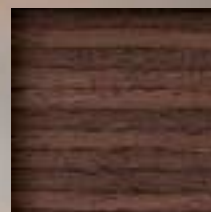
Between the panel and the door handle, an harmonic contrast takes form between the fluctuating motion of metal and the unperturbed planarity of the wing with its rich colours: from shiny Ferrari red to the soft tonalities of wood.



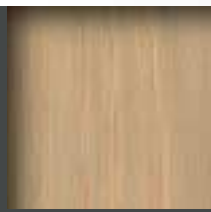
NATURAL "MILLERIGHE" WOOD



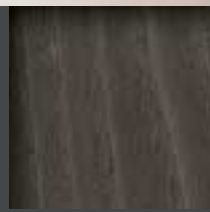
STAINED "MILLERIGHE" WOOD



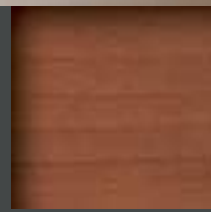
MULTILINE



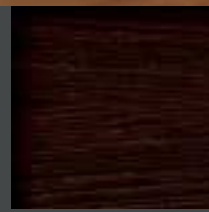
ASH TREE



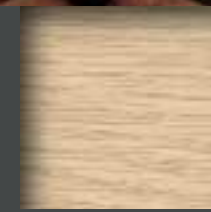
GREY QUARTZ ASH TREE



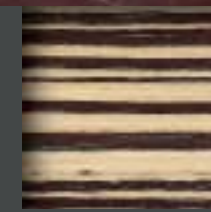
CHERRY



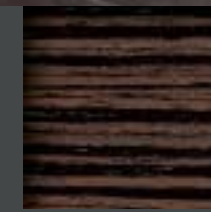
WENGÉ



WHITENED OAK



LIGHT ZEBBRANO



DARK ZEBBRANO





*The rigorous sobriety
of metal ...
the soft seduction
of fabric...*

The essential design highlights the absence of hinges, hidden by the aluminium bands positioned on both lateral side of the door. The formal simplicity also extends to the other functions of the door: the selvages disappear, the door handle seems to lean on the band and the intrusion of the door-retainer is reduced to a minimum. In contrast to the rigor of the outer metallic bands, is the seductive central panel, which lightens the severity of line through the use of seductive fabric – non flammable and tear-proof – in laminated “Millerighe” or in wood.

With its linear yet rich style, and the possibility to apply different panels, Shield offers infinite opportunities for expression.



shield DOOR

STANDARD EQUIPMENT:

- Security lock with gear movement.
 - Security cylinder with magneto-mechanical coding activated from internal side with a knob.
 - High resistance hinges adjustable in height hidden by side aluminium bands.
 - Double sheet in galvanized steel structure.
 - Internal vertical cut-proof reinforcements.
 - Draught excluder.
 - Door retainer.
 - Internal thermo acoustic insulation made of fire-proofing material.
 - Fixed rectangular pins that enter in the frame at the closing of the door leaf.
 - Internal and external door handle or central handle plus knob in silver aluminium.
 - Internal and external bands in natural aluminium.
 - Soft seal in the internal folded sheet for air, dust and noise insulation.
 - Frame and false frame in 20/10 ribbed steel sheet, adjustable in height and in depth. Frame lacquered in grey anthracite, sides in satin steel.
 - Standard net span: 209 x 89.5 cm; 209 x 84.5 cm; 209 x 79.5 cm.
- On demand, the door is available with a single leaf.

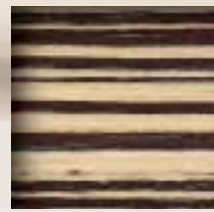




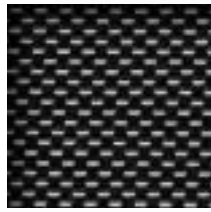
DARK GREY
"MILLERIGHE" LAMINATE



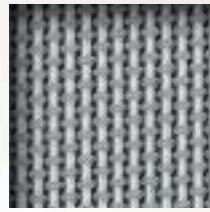
SILVER LIGHT GREY
"MILLERIGHE" LAMINATE



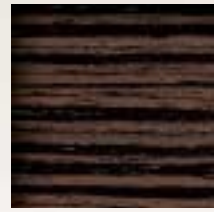
LIGHT ZEBBRANO



BLACK FABRIC



SILVER FABRIC



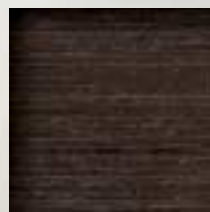
DARK ZEBBRANO

shield PANELS

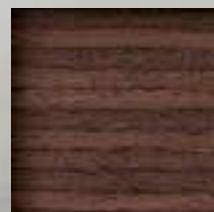
The natural aluminum of the metallic bands, serves as a basis for uniting panels of different types which remains the ideal border for the exclusiveness of the laminated "Millerighe", for the richness of the fabric, and for the expressiveness of wood, which is available in either horizontal or vertical grain.



NATURAL "MILLERIGHE"
WOOD



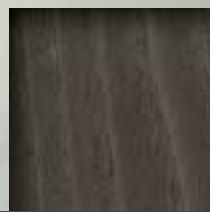
STAINED "MILLERIGHE"
WOOD



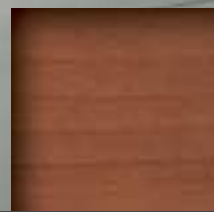
MULTILINE



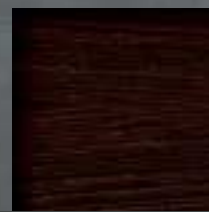
ASH TREE



GREY QUARTZ
ASH TREE



CHERRY



WENGÉ



WHITENED OAK





pininfarina

Innovative design, exclusive Safety

Avant-garde in design and in safety, the armored doors Dream, Wave and Shield offer a high degree of technical content, defined and created with absolute rigour. The safety production chain is a result of continuous research, and progresses with the careful selection of materials and components using the most advanced production processes in the sector.

Every construction detail is an active part of a broader process devised to solidly resist intrusion attempts, ranging from the structure of the double plated leaf in electro-galvanized steel with internal vertical reinforcements, to the frame and false frame in thick galvanized steel sheet, to the tear-proof plate that protects the safe lock, and to the robust adjustable hinges and fixed pins that can be inserted in the frame upon closure.

Necessary importance is also given to the aspect of comfort: the thermo acoustic insulation, is, in fact, guaranteed by the insulation of non-flammable material in the entire internal volume of the door, and a soft seal is placed in the folded plate for insulation against air, dust and noises.





SAFETY LOCK FOR EUROPEAN PROFILE CYLINDER WITH MAGNETO-MECHANIC ENCRYPTION.

FOR DREAM, WAVE AND SHIELD DOORS.

A small single key commands the clench, the three central sliding bolts and two double lateral pins, placed one in the upper area and one in the lower area.

The European profile safety cylinder represents a particular characteristic of the locking mechanism, furnished with special tear-proof and shatter-proof devices. A "cylinder cover" in tempered drill-proof steel – anchored to the interior of the door – renders every manipulation or extraction attempt vain.

This closing system is highly functional in case the key is lost, as it allows with a simple operation, to replace the sole cylinder instead of the whole safe lock. Furthermore, it offers the practicality of a key that comes in particularly reduced dimensions.

SAFETY LOCK FOR EUROPEAN PROFILE CYLINDER AND SECONDARY LOCK WITH CYLINDER.

SHIELD DOORS.

Activated by a European profile cylinder, the maximum protection is offered against manipulation and extraction attempts thanks to the "cylinder cover" in tempered drill-proof steel, anchored to the door interior. A small key commands three sliding bolts and a spring latch in the centre, a double lower pins, and a double upper pins. Should the keys be lost, it is sufficient to replace the cylinder instead of the entire lock.

The secondary safety lock, a cylinder, is activated by a key that commands not only the spring latch and the closure sliding bolt, but also blocks the main safety lock. In this way, the owner can allow discretionary access to collaborators or employees.

On demand, both cylinders may be programmed in order to allow the owner's key to activate both mechanisms, while allowing the service key to activate only one.





WAVE AND DREAM DOORS: BEAUTIFUL
IN REAL LIFE, SPECIAL EVEN IN
PHOTOGRAPH.

Red, yellow, blue, or?
Wave and Dream armoured door
collection is truly very special: here
is an example.



w a v e
d r e a m



**SHIELD DOOR: TEMPTATIONS IN WOOD
AND LAMINATED.**

What you see is a significant selection of Shield armoured door panels: it is easy to be captured by the variety of choices, but difficult to choose from available alternatives.



DREAM, WAVE AND SHIELD ARE THE FIRST ARMoured DOORS THAT
COMBINE THE MOST ADVANCED TECHNICAL CONTENTS WITH DESIGN.
TORTEROLO & RE AND PINIFARINA DEDICATE THEM TO ALL THOSE WHO
REQUIRE ASSURANCE AND LOVE TO LIVE IN STYLE, BECAUSE THEY
TRANSMIT EMOTIONS THROUGH SHAPES, MATERIALS AND COLOURS
THAT TRANSFORM SAFETY INTO PURE PLEASURE.

TORTEROLO & RE: EXCLUSIVE SAFETY.

TORTEROLO & RE

ARMOUR-PLATED DOORS

TORTEROLO & RE S.p.A. - 17017 Cosseria (SV) Italy - Via Cornareto, 180
Tel. +39 019 51 69 01 - Fax +39 019 51 70 97
www.torteroeloere.it - E-mail: info@torteroeloere.it