

Anteris® Operating Tables



Anteris® Key Features at a Glance



Double Security

All movements can also be performed manually by preselector lever and hydraulic foot pump, ensuring double security.

Hand Held Control

Hand-held control in “reverse mode” allows normal operation of the table in reverse positioning.



Memory Foam Pads

Prevents pressure ulcers and provides maximum patient comfort.

Disinfection-proof Gel Strips

Adhesive gel strips are easily sterilised, maintaining hygiene standards without constant replacement.





250kg Weight Capacity

An increased weight bearing capacity makes the Anteris table suitable for the vast majority of patients.

Choice of 3 or 4 Fully Powered Movements

Anteris 30 provides fully powered movements of High/Low, Lateral (left/right) and Trendelenburg/Reverse Trendelenburg positionings. Anteris 40 provides the same positioning, plus a fourth powered movement of the back section.



Longitudinal Shift (optional)

Flexibility in positioning of the table top, either to the left or right, allows for all operational procedures.

Kidney Bridge (optional)

Lifting 100mm from the bed, the unique Kidney Bridge caters for a variety of procedures.



Anteris® Model Selection



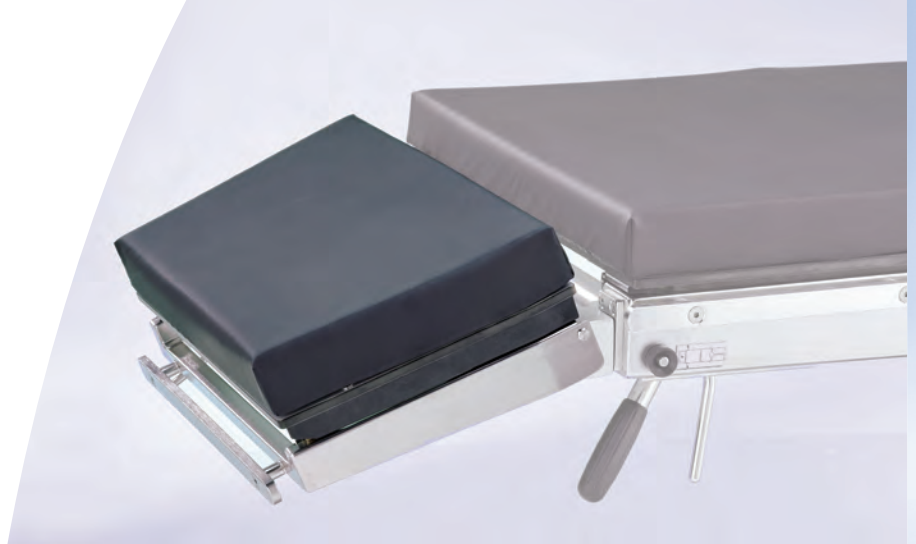
Powered Movements

Anteris 30 Models

Three electro-hydraulic adjustments by means of hand-held control.

- Height (Up/Down)
- Tilt (Left/Right)
- Trendelenburg and Reverse Trendelenburg

All movements also manually controllable.

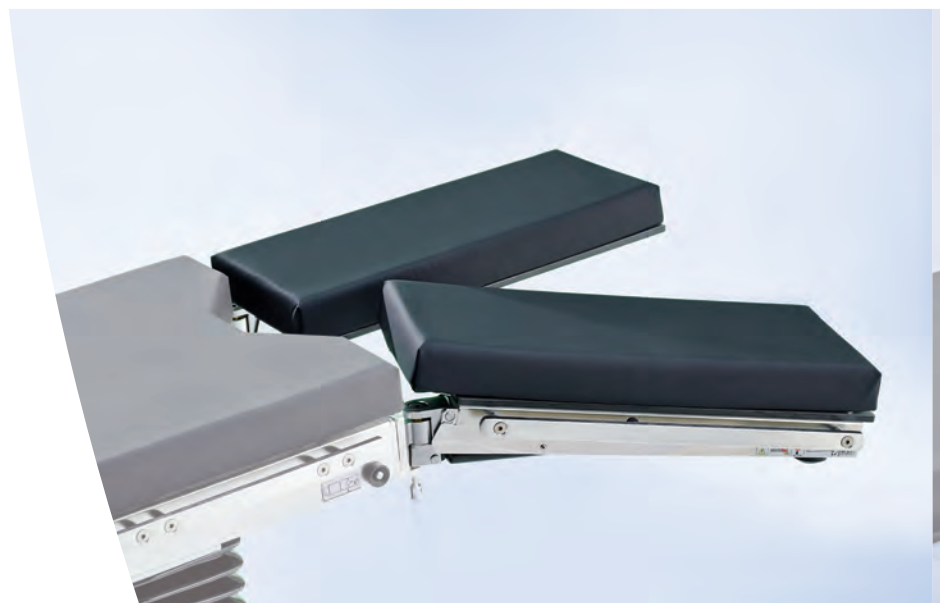
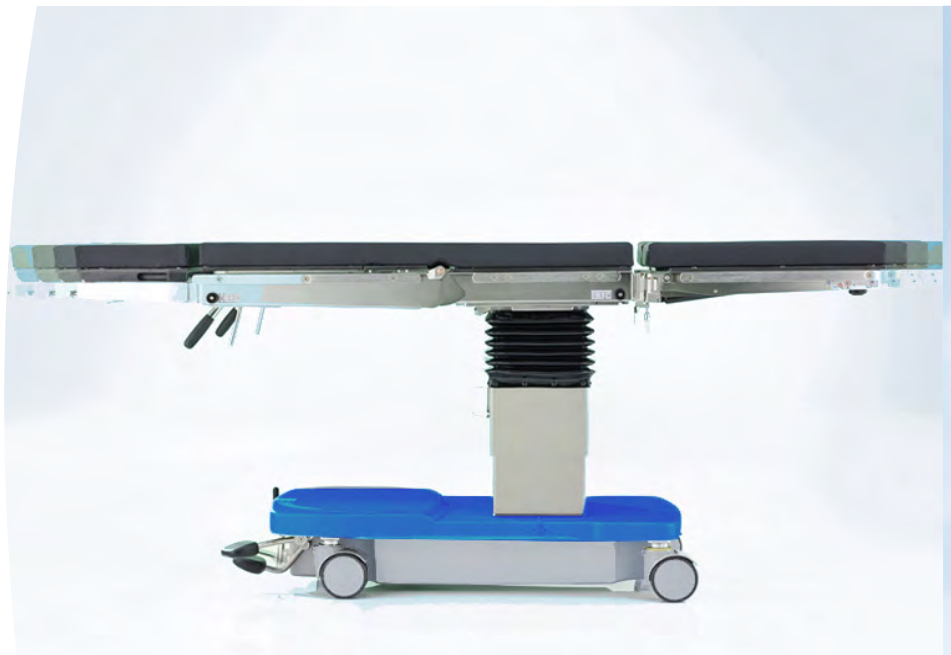


Anteris 40 Models

Anteris 40 has an additional electro-hydraulic adjustment by means of hand-held control.

- Back Section (Raise/Lower)

Movement also manually controllable.





Choose Head Selection

Mono Head Rest

Servo-assisted one-hand tilting.

Duo Head Rest

Double-adjustment, servo-assisted weight compensation.



Choose Options

Base Model - B

Base Operating Table with 3 or 4 electro-hydraulic movements.

Kidney Bridge - K

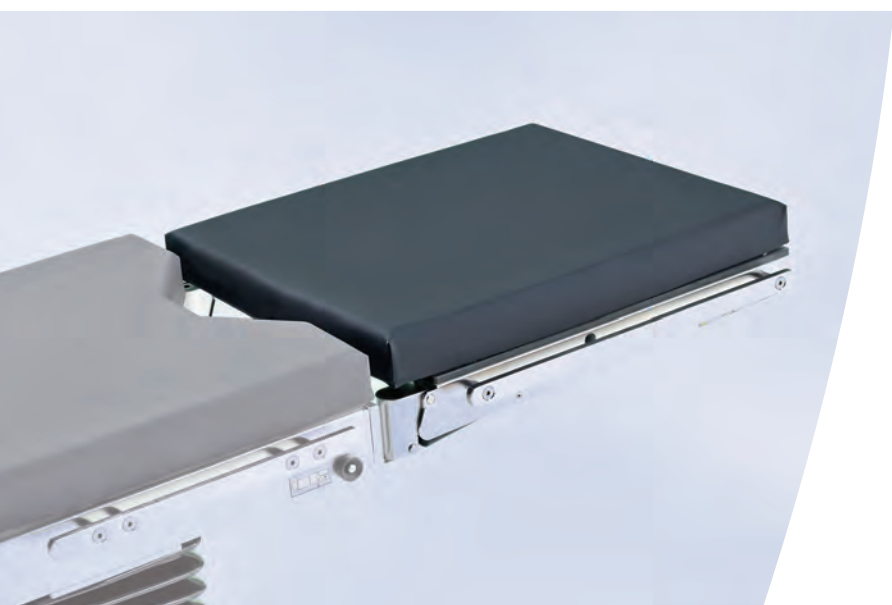
Operating Table with 3 or 4 electro-hydraulic movements & Kidney Bridge.

Longitudinal Shift - L

Operating Table with 3 or 4 electro-hydraulic movements & Longitudinal Shift.

Integrated (both) - I

Operating Table with 3 or 4 electro-hydraulic movements with Integrated Kidney Bridge and Longitudinal Shift.



Choose Single or Double Leg Section

Single Leg Section

One-piece leg section, servo-assisted tilting.

Double Leg Section

Manual swivelling and servo-assisted tilting with weight compensation.

Anteris® Technical Data



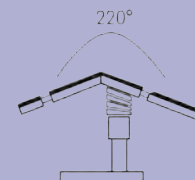
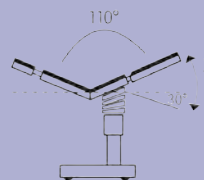
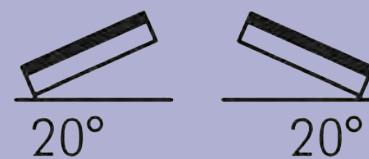
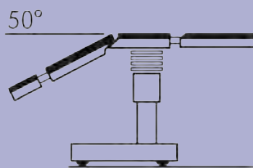
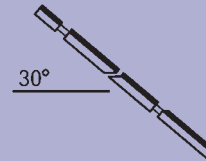
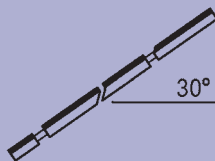
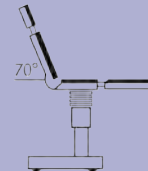
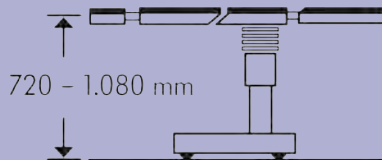
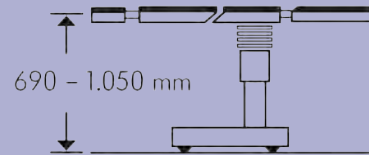
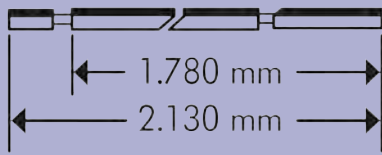
	30 30k	30L 30I	40 40K	40 40I
Overall length w/o head and leg sections	1,140 mm	1,140 mm	1,140 mm	1,140 mm
Overall length w/o head rest, with leg section	1,780 mm	1,780 mm	1,780 mm	1,780 mm
Overall length with head and leg sections	2,130 mm	2,130 mm	2,130 mm	2,130 mm
Width of table top	540 mm	540 mm	540 mm	540 mm
Total width	590 mm	590 mm	590 mm	590 mm
Base plate (length x width)	all models: 1,120 x 580 mm			
Diameter of the castors	125 mm	125 mm	125 mm	125 mm
Height adjustment range (w/o pads)	690 mm - 1,050 mm	720 mm - 1,080 mm	690 mm - 1,050 mm	720 mm - 1,080 mm
Trendelenburg	30°	30°	30°	30°
Reverse Trendelenburg	30°	30°	30°	30°
Lateral adjustment (L/R)	+/- 20°	+/- 20°	+/- 20°	+/- 20°
Longitudinal displacement	—	250 mm	—	250 mm
Back section	+ 70/- 50°	+ 70/- 50°	+ 70/- 50°	+ 70/- 50°
Leg plate(s)	+ 20/- 90°	+ 20/- 90°	+ 20/- 90°	+ 20/- 90°
Swivelling of leg plate	55°	55°	55°	55°
Head rest	+ 25/- 45°	+ 25/- 45°	+ 25/- 45°	+ 25/- 45°
Tilt of head section pad	25°	25°	25°	25°
Net weight incl. head and leg sections	210 kg	220 kg	215 kg	225 kg
Weight capacity*:				
Max. static load (up to)	250 kg	250 kg	250 kg	250 kg
Safe working load (up to)	185 kg	185 kg	185 kg	185 kg
Battery operation	●	●	●	●
External battery charger 90 – 264 V, 50 – 60 Hz	●	●	●	●

● standard equipment

* The weight capacity may vary depending on the patient's orientation and position on the table top.



Product Name	Description	Part No. for Ordering
Anteris 30B	Base Operating table with 3 electro-hydraulic movements	ANTERIS30B
Anteris 30K	Operating table with 3 electro-hydraulic movements & Kidney Bridge	ANTERIS30K
Anteris 30L	Operating table with 3 electro-hydraulic movements & Longitudinal Shift	ANTERIS30L
Anteris 30I	Operating table with 3 electro-hydraulic movements & with Integrated Kidney Bridge and Longitudinal Shift	ANTERIS30I
Anteris 40B	Base Operating table with 4 electro-hydraulic movements	ANTERIS40B
Anteris 40K	Operating table with 4 electro-hydraulic movements & Kidney Bridge	ANTERIS40K
Anteris 40L	Operating table with 4 electro-hydraulic movements & Longitudinal Shift	ANTERIS40L
Anteris 40I	Operating table with 4 electro-hydraulic movements & with Integrated Kidney Bridge and Longitudinal Shift	ANTERIS40I



Anteris® Functionality

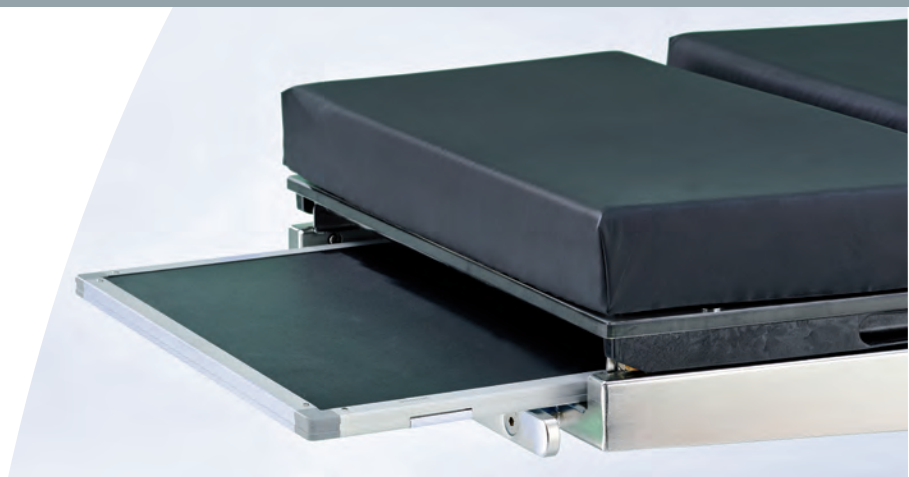


X-ray Cassette Access

Continuous rails for X-ray cassette insertion.

Reverse Mode

“Reverse Mode” allows for normal operation of the table when the patient is reverse positioned. The hand-held unit can also be equipped with an optional “Return-to-zero” function.



Battery Level Indicator

The hand held controller includes a live indication of the level of battery charge.

Foot Control (Optional)

Allows for full control of all electrical table functions.





Covered Castors

Castors have protective splash caps to encourage hygienic practice.

5 Wheel Mobile Base

Four easy-glide double castors with cap. A central brake and spring loaded fifth, directional castor in the centre of the base allows for easy movement in confined spaces.

Quickly Removable Head and Leg Plates

One-button removal and attachment of head and leg plates makes for simple patient positioning in reverse mode.



Battery Charger

Removable charger for electro-hydraulic tables. Damage resistant whilst remaining small and discreet.



Anteris® Positions



Kidney and thoracic surgery



Nailing of the upper arm



Laparoscopy



Neurosurgery



Arthroscopy



Urology



Neurosurgery



Gynaecology



MIS/Gynaecology



Spinal surgery



MIS/Cholecystectomy



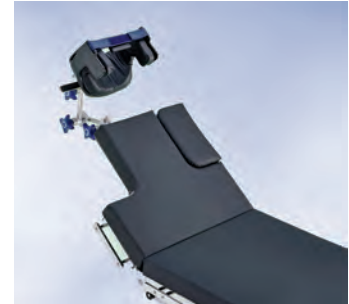
ENT/Gynaecology



Shoulder surgery



Struma



Accessories ref.
101.2790.1 +
101.0013.0 +
101.0187.0



Vascular surgery/ERCP



Gall bladder surgery



Fracture of neck of femur



Vascular surgery



Femoral shaft fracture



Tibial shaft fracture



UK Customs
Approved Exporter
Status GB 16164/13



Intertek



061

Anteris® Accessory Kits



General Surgery

2x	MA10125801	Head section
	MA10121701	Leg section
	MA10100190	Arm rest
	MA10101230	Wristlet
	MA10101770	Body restraint strap
	MA10100120	Anaesthetic frame
	MA10101110	Anaesthetic frame extension

Gynaecology

	MA10125801	Head section
	MA10121701	Leg section
2x	MA10101150	Leg support (Goepel type)
2x	MA10101460	Attachment clamp
	MA10100190	Arm rest
	MA10101230	Wristlet
	MA10100120	Anaesthetic frame
	MA10101110	Anaesthetic frame extension

Minimal invasive surgery/Laparoscopy

	MA10125801	Head section
	MA10121701	Leg section
	MA10100190	Arm rest
	MA10101230	Wristlet
2x	MA10101640	Leg restraint strap
	MA10100120	Anaesthetic frame
	MA10101110	Anaesthetic frame extension
2x	MA10101150	Leg support (Goepel type)
2x	MA10101460	Attachment clamp

Urology

	MA10125801	Head section
	MA10121701	Leg section
	MA10160101	Urology adapter
	MA10101820	Deep drain basin
	MA10101910	TUR Sieve
	MA10160200	Pair of elbow rests
2x	MA10101150	Leg support (Goepel type)
2x	MA10101460	Attachment clamp
	MA10100190	Arm rest
	MA10101230	Wristlet
	MA10100120	Anaesthetic frame
	MA10101110	Anaesthetic frame extension

Kidney and Thorax surgery

	Anteris	I models
	MA10125900	Head section
	MA10121701	Leg section
	MA10102030	Semi-circular cushion
3x	MA10101210	Bracket for body supports
2x	MA10101620	Back/buttock support
	MA10101750	Pubis/sacrum/sternum support
2x	MA10101920	Arm rest
	MA10101770	Body restraint strap
	MA10100120	Anaesthetic frame
	MA10101110	Anaesthetic frame extension



ENT	
Table model without gyn. cutout Variant 1	
MA10125801	Head section
MA10121801	Leg section
Variant 2 - Reverse-Mode Positioning	
MA10101550	Shaped head rest or
MA10101790	Shaped head rest
MA10101670	Connecting piece or
MA10101870	Connecting piece
MA10127801	Shoulder plate
additionally, for both variants	
2x MA10100190	Arm rest
MA10101770	Body restraint strap
optionally	
MA10164000	Foot control (RC models only)

Ophthalmology	
Patient positioning in reverse mode L table model without gyn. cutout	
MA10121801	Leg section
MA10100190	Arm rest
MA10127801	Shoulder plate
alternatively	
MA10127200	Universal adaptor
MA10101120	Supporting arm
MA10101790	Shaped head rest
optionally	
MA10164000	Foot control RC models only

Rectum surgery	
Variant 1 in lithotomy position	
MA10125801	Head section
2x MA10101150	Leg support (Goepel type)
2x MA10101460	Attachment clamp
2x MA10100190	Arm rest
MA10100100	Pair of shoulder supports
Variant 2 in prone position	
MA10125801	Head section
MA10121701	Leg supports with gyn. cutout
2x MA10100190	Arm rest
MA10120701	Knee/foot rest
MA10101780	Rectoscopy/ Buttocks support
2x MA10101460	Attachment clamp
MA10100120	Anaesthetic frame

Adiposity surgery	
Anteris 40 model	
MA10125801	Head section
MA10121701	Leg section
as an alternative for the leg section	
2x MA10101150	Leg support (Goepel type)
2x MA10101460	Attachment clamp
MA10101940	Extension plates (two-part set)
MA10102000	Extension plates (two-part set)
2x MA10100190	Arm rest
MA10120701	Knee/foot rest or
MA10102020	Foot rest (pair)
MA10100100	Pair of shoulder supports
2x MA10101640	Leg restraint strap

Anteris® Accessory Kits



Traumatology (fracture treatment of the lower limbs)

Table model without gyn. cutout	
MA10125801	Head section
MA10102700	Extension device with basic accessories: 2x extension bar supports 2x foot plates for adults 2x traction boots for adults 1x countertraction post for dorsal position
MA10103500	1 Countertraction post for lateral position
MA10152500	Mounting for extension device (except L-models)
MA10102510	Mounting arbor
MA10101380	Pad
MA10102900	Transport trolley or
MA10102210	Transport trolley
MA10102180	Transfer leg plates (pair)
MA10100190	Arm rest
MA10100120	Anaesthetic frame
MA10101370	Wristlet

Fractures of the femur and neck of the femur, additional access

MA10101150	Leg support (Goepel type)
MA10101460	Attachment clamp
MA10101930	Side rail extension

Traumatology (fracture treatment of the upper arm)

MA10125801	Head section
MA10121701	Leg section
MA10101360	Upper arm positioning device
MA10101460	Attachment clamp
MA10101520	Counteraction post for upper arm
MA10101460	Attachment clamp
MA10101630	Weinberger hand traction device
MA10101220	Upper arm positioning plate
MA10101170	Attachment clamp
MA10100190	Wristlet
MA10101770	Body restraint strap

Neurosurgery

MA10127801	Shoulder arthroscopy plate
MA10121701	Leg section
MA10101130	Doro Skull clamp adaptor
MA10101420	Doro Universal basic unit
MA10101270	Doro-Skull-Clamp alternatively
MA10101560	Doro shaped head rest
MA10100140	Cross-bar attachment
MA10127200	Universal adaptor
2x MA10100180	Attachment clamp
MA10100190	Arm rest



Vascular surgery	
	Anteris 40 L
	MA10125801 Head section
	MA10121701 Leg section
2x	MA10100190 Arm rest as an alternative for MA10121701
	MA10171510 Carbon plate
	MA10171530 Extension for carbon plate
2x	MA10171520 Side rail for carbon plate

Shoulder arthroscopy	
	MA10127901 Shoulder arthroscopy plate
	MA10121701 Leg section
	MA10100130 Head support
	MA10101670 Connecting piece
2x	MA10100190 Arm rest
	MA10101770 Body restraint strap

Fractures of the lower legs, additional access	
	MA10102800 Positioning device for the lower leg
	MA10101150 Leg support (Goepel type)
	MA10101460 Attachment clamp
	MA10101930 Side rail extension
	MA10101650 Kirschner wire device

Spinal surgery	
	MA10125801 Head section
	MA10121701 Leg section as an option
	MA10120701 Knee/foot rest
	MA10101780 Buttocks support
2x	MA10101460 Attachment clamp
	MA10100150 Cushion for prone position
2x	MA10100190 Arm rest
	MA10100120 Anaesthetic frame

Knee arthroscopy	
	MA10125801 Head section
	MA10121701 Leg section
	MA10102120 Knee arthroscopy positioning device
	MA10101460 Attachment clamp alternatively
	MA10105830 Knee arthroscopy positioning device
	MA10101640 Leg restraint strap
	MA10100190 Arm rest
	MA10100120 Anaesthetic frame
	MA10101230 Wristlet

Arm/Hand surgery	
	MA10125801 Head section
	MA10121701 Leg section
	MA10100701 Arm/hand operating table as an alternative for MA10100700
	MA10101080 Arm/hand operating table (radiolucent CFRP board)
	MA10100190 Arm rest
	MA10101770 Body restraint strap
	MA10100120 Anaesthetic frame



Brandon Medical Co Ltd, Elmfield Road, Morley, Leeds, LS27 0EL

T: +44 (0)845 1243 666 F: +44 (0)845 1243 667

T: +44 (0)113 2777 393 F: +44 (0)113 2728 844

E: enquiries@brandon-medical.com

www.brandon-medical.com



In line with the Brandon policy of progressive improvement, the right is reserved to alter specifications and/or pieces without notice.
Anteris is a trademark of Brandon Medical Co Ltd.

Brandon Medical, Quasar, HD-LED and Symposia are registered trademarks of Brandon Medical Co Ltd.