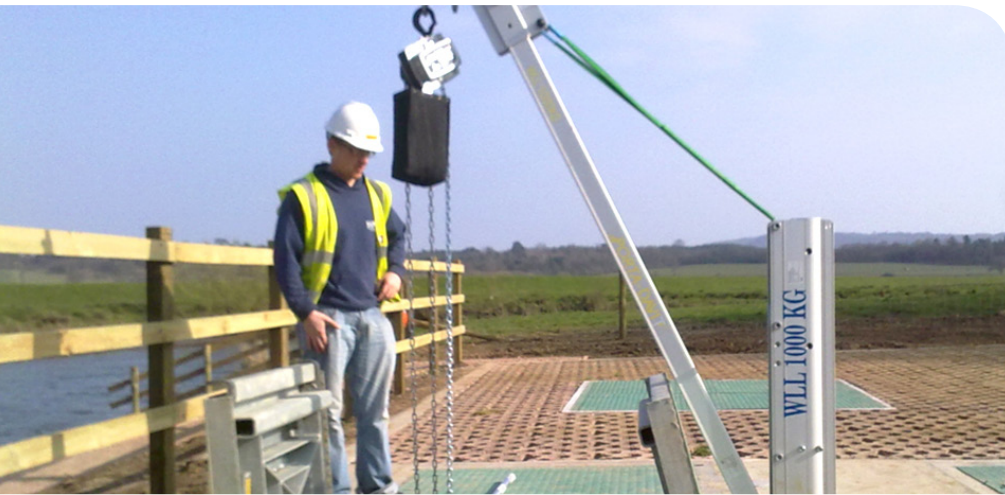


# CASE HISTORY



## Project Title

River Arun Abstraction Scheme, Hardham

## Client

Trant / Southern Water

## Sector

Water Treatment

## Product

PD1000 (customised)

## RIVER ARUN ABSTRACTION SCHEME



### CLIENT REQUIREMENTS

Southern Water is currently undertaking a significant investment programme designed to improve the quality and reliability of its mechanical and electrical infrastructure. The scheme, known as Asset Management Plan 5, involves hundreds of millions of pounds of expenditure at multiple sites, and calls for safe engineering works to be undertaken in potentially hazardous near-water locations.

As part of this programme, Southern Water – via its partner Trant Construction – is undertaking work to provide additional fresh water resources to address the issue of supply shortages during dry conditions. For such schemes to continue to operate successfully, maintenance of equipment such as pumps and motors is required, some of which can weigh up to 700kg and need to be lifted safely into position.



### REID LIFTING SOLUTION

There are inherent dangers when lifting heavy mechanical appliances, and these dangers are amplified when working within or near water. REID's solution to Trant and Southern Water was to provide a lifting system which met the requirements for safety and reliability without compromising in practicality – the adapted PORTA-DAVIT 1000 supplied by REID is easily stowed and transported, quick to assemble and can be carried within manual handling guidelines.

After supply of the initial PD1000, the client got back in touch with REID to highlight a change in the planned specifications of the working sites – in this case site modifications which meant that the crane jib would have to overreach covers on site. REID was able to modify its product to provide safe clearance without reducing the factor of safety required by the client's stringent health and safety standards.

**No. 1 in lightweight, portable, safe lifting solutions**

[www.reidlifting.com](http://www.reidlifting.com)

Reid Lifting Limited, Unit 1 Severnlink, Newhouse Farm Industrial Estate, Chepstow, Monmouthshire, NP16 6UN

T 01291 620796 | F 01291 626490 | E [enquiries@reidlifting.com](mailto:enquiries@reidlifting.com)



LIGHTWEIGHT | PORTABLE | SAFE

