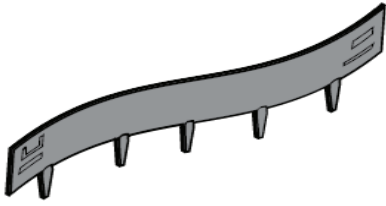


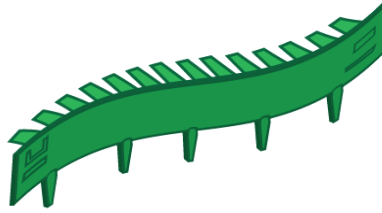
## The Range

### FLEXIBLE EDGE



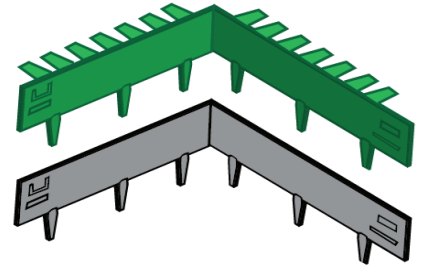
Perfect for delimiting flower beds, pathways and generally creating borders anywhere in your garden.

### ARTIFICIAL GRASS EDGE



Specifically designed for use with artificial grass, the welded tabs provide the perfect fixing solution and also help to secure underlay.

### 90° CORNER EDGE

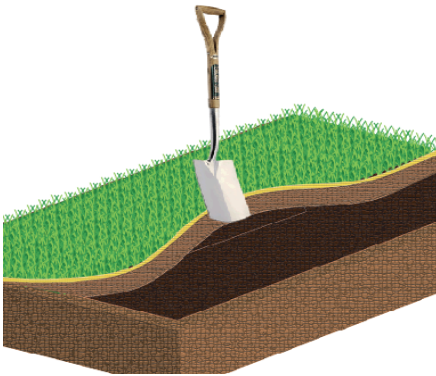


It is true all our edgings can be bent to create any angle, but for those perfectionists looking for a quick and easy way to get the job done this one's for you.



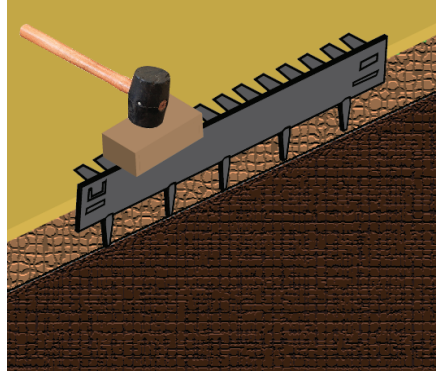
## Installation

### STEP 1



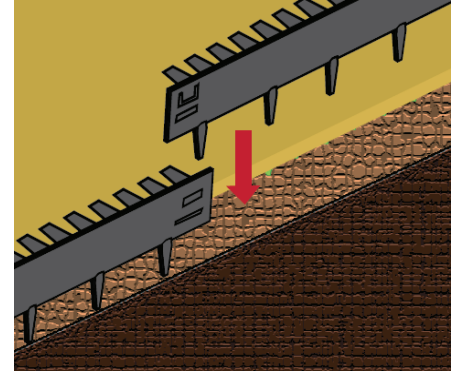
Using a hose or rope, make a guide for your edging to follow. If the ground is relatively soft you're good to go. If not, you may need to loosen the ground with a flat spade or pickaxe to ensure the edging can be installed without difficulty.

### STEP 2



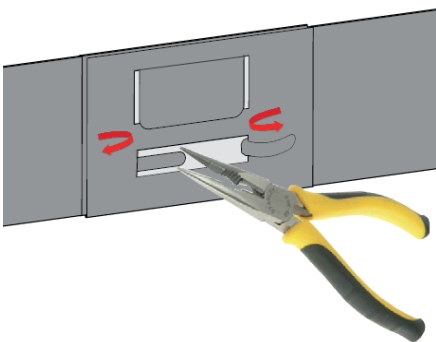
Starting at one end, tap the edging down using a wooden block and mallet. Ensure the edging remains vertical as it is driven into the ground. The edging should be driven down until the tabs are level with the sand sub-base or slightly below the optional CORE shockpad.

### STEP 3



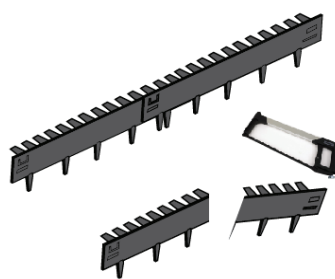
Before driving the whole edging into the ground connect the next edging. Try to maintain a continuous line along the top of the edgings when tapping them into the ground to prevent the connections from coming apart.

### STEP 4



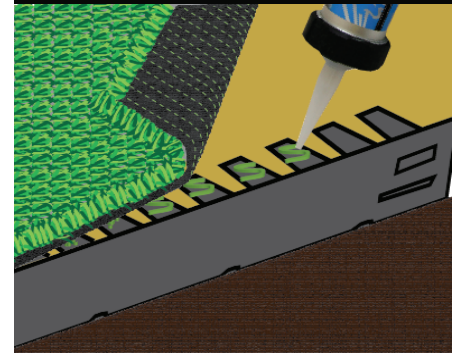
Connect the edgings by sliding the large tab on one edging down through the slit on the adjacent edging. Using a pair of thin nosed pliers, pull both thin tabs through the slit provided and rotate them back on themselves.

### STEP 5



If you end up with an edging that is too long, you can either overlap the last joint or cut the edging using a hacksaw. Be sure to use a metal file to smooth over the cut end and we recommend applying a metal primer paint to prevent rusting.

### STEP 6



Apply your adhesive directly onto the tabs, ensure you push the grass down firmly to achieve sufficient contact with the tab. Make sure the artificial grass is stuck all the way around the perimeter to prevent movement and creasing.