

Total refrigeration

www.totalrefrigeration.co.uk
Enhanced stock vouchers when you buy online!

Unilever freezer sales scheme 2010

Extra stock vouchers on selected freezers



Prices and stock vouchers valid until the 31st May 2010



Display Freezers

Ice cream freezers branded with the UK's number 1 selling luxury ice cream
(IRI, MAT July 2009)

A range of display freezers that are suitable for most retailing environments; the counter top is perfect for siting on serving areas, the Upright Vista for maximum visibility and capacity; or where floor space is a premium but high visibility and capacity is required then there is the Midi Vista that suits perfectly.

Ben & Jerry's Midi Vista



£929 ^{+VAT}

Plus vouchers for ice cream worth **£350** RRP[†]

Ben & Jerry's Upright Vista



£1,159 ^{+VAT}

Plus vouchers for ice cream worth **£420** RRP[†]

Ben & Jerry's Counter Top



£515 ^{+VAT}

Plus vouchers for ice cream worth **£300** RRP[†]

FREE
pavement sign with every Ben & Jerry's Display Freezer

Cows © Woody Jackson 1997

Model	Width (mm)	Depth (mm)	Height (mm)	No. of Shelves	Price £(Ex.VAT)	Ice Cream at RRP £(inc.VAT)	Vouchers Face Value Telephone	Vouchers Face Value On-line	Leasing Weekly £(Ex.VAT)
Ben & Jerry's Upright Vista	670	825	1960	5 + Base	£1159	£420	£250	£300	£9.37
Ben & Jerry's Midi Vista	620	590	1711	5 + Base	£929	£350	£200	£250	n/a
Ben & Jerry's Counter Top with lightbox	510	470	830	2 + Base	£515	£300	£150	£200	n/a

[†]Value of Ben & Jerry's ice cream at RRP from the ice cream stock vouchers when freezer is purchased online. For the avoidance of doubt, retailers are free to set their own retail prices. All freezer purchases made by cheque will receive a £50 stock voucher only.

Vista Chest Freezers

Big ice cream sales from classic style freezers

Research has shown that selling ice cream from a Wall's branded chest freezer rather than an unbranded one can increase sales by 39%*. With the increased vouchers on the Vista 12 and Vista 18 range there has never been a better time to buy one!

Vista 6

£359 +VAT

Plus vouchers for ice cream worth **£225** RRP†



FREE
pavement sign with every Wall's and Ben & Jerry's Vista Chest Freezer

Vista 12

£449 +VAT

Plus vouchers for ice cream worth **£450** RRP†



Vista 18

£539 +VAT

Plus vouchers for ice cream worth **£540** RRP†



Extra
ice cream stock vouchers on the Vista 12 & 18

Model	Width (mm)	Depth (mm)	Height (mm)	No. of Compartments	Price £(Ex. VAT)	Ice Cream at RRP £(inc. VAT)	Vouchers Face Value Telephone	Vouchers Face Value On-line	Leasing Weekly £(Ex. VAT)
Wall's Vista 6	680	650	880	6	£359	£225	£100	£150	n/a
Wall's Vista 12	1000	650	880	12	£449	£450	£250	£300	n/a
Wall's Vista 18	1500	650	880	18	£539	£540	£310	£360	n/a
Ben & Jerry's Vista 6	680	650	880	6	£359	£225	£100	£150	n/a
Ben & Jerry's Vista 12	1000	650	880	12	£449	£450	£250	£300	n/a

†Value of Wall's and Ben & Jerry's ice cream at RRP from the ice cream stock vouchers when freezer is purchased online. For the avoidance of doubt, retailers are free to set their own retail prices. *Research conducted IRI September 2007. All freezer purchases made by cheque will receive a £50 stock voucher only.

Maxivision II Range

Perfect ice cream display with the ultimate three tier freezer

The Maxivision II range of freezers are the ultimate in ice cream display freezers. With the fantastic rate of ice cream sales and its innovative aesthetic and technical features it is the ultimate ice cream selling machine.

A Maxivision II has been proven to sell on average 42% more ice cream than a non-Wall's chest freezer.** This demonstrates the importance of having a well sited, highly visible freezer in your store. The Wall's Maxivision II also boasts graphics showing the ingredients that help to make delicious Wall's ice cream, making the freezer more attractive to the modern shopper.

The Maxivision II is also available in a Slimline version to suit less spacious environments.



*Maxivision II is 22% more energy efficient than the Maxivision I and the Slimline Maxivision II is 24% more energy efficient than the Slimline Maxivision I (Source: Manufacturers test data, April 2008)

**Research conducted IRI September 2007

Annual ice cream sales of £10,000 could have been **£14,200** with a **Maxivision II**

Model	Width (mm)	Depth (mm)	Height (mm)	No. of Compartments	Price £(Ex.VAT)	Ice Cream at RRP £(inc.VAT)	Vouchers Face Value Telephone	Vouchers Face Value On-line	Leasing Weekly £(Ex.VAT)
Wall's Maxivision II	1266	875	1333	18	£1269	£600	£350	£400	£10.26
Wall's Slimline Maxivision II	816	875	1333	12	£1119	£600	£350	£400	£9.05
Ben & Jerry's Slimline Maxivision II	816	875	1333	12	£1119	£600	£350	£400	£9.05

†Value of Wall's and Ben & Jerry's ice cream at RRP from the ice cream stock vouchers when freezer is purchased online. For the avoidance of doubt, retailers are free to set their own retail prices. All freezer purchases made by cheque will receive a £50 stock voucher only.

FREE
pavement sign with
every Wall's and
Ben & Jerry's
Maxivision Freezer



Adjustable
dividers

Lid
seals

Low
maintenance
condenser

Clear
product
display

Extra
ice cream stock
vouchers on the
Maxivision II
Range

Long life
lights

Low energy
fan motor

£1,269^{+VAT}
Plus vouchers for
ice cream worth
£600 RRP[†]

£1,119^{+VAT}
Plus vouchers for
ice cream worth
£600 RRP[†]

£1,119^{+VAT}
Plus vouchers for
ice cream worth
£600 RRP[†]



Wall's
Maxivision II



Wall's Slimline
Maxivision II



Ben & Jerry's
Slimline
Maxivision II

Hawking Trolleys

The portable ice cream selling solution!

Simply plug a Hawking Trolley in overnight to freeze it down then unplug it and move it around to hot spots, such as queues waiting for rides to maximise your ice cream sales. They are available in Wall's or Ben & Jerry's branding, can be supplied with rough terrain wheels if requested and can run for up to 8 hours without power!!



Rough terrain wheeled version available at no extra charge. Please note the height of the Hawking Trolley will increase to 1050mm.



£699 +VAT

Plus vouchers for ice cream worth **£225** RRP[†]

Model	Width (mm)	Depth (mm)	Height (mm)	No. of Compartments	Price £(Ex.VAT)	Ice Cream at RRP £(inc.VAT)	Vouchers Face Value Telephone	Vouchers Face Value On-line	Leasing Weekly £(Ex.VAT)
Wall's Hawking Trolley Standard Wheels	770	710	960	n/a	£699	£225	£100	£150	n/a
Ben & Jerry's Hawking Trolley Standard Wheels	770	710	960	n/a	£699	£225	£100	£150	n/a

[†]Value of Wall's and Ben & Jerry's ice cream at RRP from the ice cream stock vouchers when freezer is purchased online. For the avoidance of doubt, retailers are free to set their own retail prices. All freezer purchases made by cheque will receive a £50 stock voucher only.

Cornetto Soft

Exceptional taste, satisfaction and huge profits

A freezer, cone holder and easy to use dispenser branded Cornetto Soft - perfect for those leisure locations where customers are looking for impulse hand held coned ice cream.

FREE
pavement sign with every Wall's Cornetto Soft Freezer



£459 +VAT

Plus vouchers for ice cream worth **£240** RRP[†]



Model	Width (mm)	Depth (mm)	Height (mm)	No. of Compartments	Price £(Ex.VAT)	Ice Cream at RRP £(inc.VAT)	Vouchers Face Value Telephone	Vouchers Face Value On-line	Leasing Weekly £(Ex.VAT)
Wall's Cornetto Soft	680	650	880	n/a	£459	£240	£100	£150	n/a

[†]Value of Cornetto Soft ice cream at RRP from the ice cream stock vouchers when freezer is purchased online. For the avoidance of doubt, retailers are free to set their own retail prices. Please note that the dispenser and cone holder remain the property of Unilever UK Limited. All freezer purchases made by cheque will receive a £50 stock voucher only.

Take Home Island Freezers

Wall or isle sited take home ice cream freezers

The perfect solution for take home ice cream in a range of models and sizes.

FREE
pavement
sign with
every Wall's
Take Home
Island
Freezer



Wall's TH-VT150



Wall's TH-SP125

From
£799 +VAT
Plus vouchers for
ice cream worth
£450 RRP[†]

From
£469 +VAT
Plus vouchers for
ice cream worth
£300 RRP[†]

Model	Width (mm)	Depth (mm)	Height (mm)	No. of Compartments	Price £(Ex. VAT)	Ice Cream at RRP £(inc. VAT)	Vouchers Face Value Telephone	Vouchers Face Value On-line	Leasing Weekly £(Ex. VAT)
Wall's Take Home VT150 Island Freezer	1558	978	753	n/a	£799	£450	£250	£300	n/a
Wall's Take Home VT200 Island Freezer	2058	978	753	n/a	£949	£450	£250	£300	n/a
Wall's Take Home VT250 Island Freezer	2558	978	753	n/a	£1099	£450	£250	£300	£8.89
Wall's Take Home SPH125G Island Freezer	1248	709	880	n/a	£469	£300	£150	£200	n/a
Wall's Take Home SPH150G Island Freezer	1498	709	880	n/a	£509	£300	£150	£200	n/a

[†]Value of Wall's and Ben & Jerry's ice cream at RRP from the ice cream stock vouchers when freezer is purchased online. For the avoidance of doubt, retailers are free to set their own retail prices. Please note that the TH-VT range is not supplied with baskets or dividers - contact Total Refrigeration Ltd for baskets/divider options and prices - and locks are not available. Baskets or dividers are not available for the TH-SP range. The TH-SP range has lockable lids as standard. All freezer purchases made by cheque will receive a £50 stock voucher only.

Unilever Back of House Storage Freezer

Branded back of house ice cream storage freezer

A freezer with solid lockable lids that runs on Hydrocarbon refrigerant - making it a more efficient back of house freezer than ones that run on older types of refrigerants.

From
£369 +VAT
Plus vouchers for
ice cream worth
£225 RRP[†]



Unilever 1.0m
Storage Freezer

Buy any Unilever branded freezer from this brochure and purchase a back of house storage freezer for only

£199 (+VAT)*

Model	Width (mm)	Depth (mm)	Height (mm)	No. of Compartments	Price £(Ex. VAT)	Ice Cream at RRP £(inc. VAT)	Vouchers Face Value Telephone	Vouchers Face Value On-line	Leasing Weekly £(Ex. VAT)
Unilever 1.0m Storage Freezer	1000	650	880	n/a	£369	£225	£100	£150	n/a
Unilever 1.5m Storage Freezer	1500	650	880	n/a	£429	£225	£100	£150	n/a

[†]Value of Wall's and Ben & Jerry's ice cream at RRP from the ice cream stock vouchers when freezer is purchased online. For the avoidance of doubt, retailers are free to set their own retail prices. *No ice cream stock vouchers are included in this offer including payment by cheque. Offer valid 31st May 2010 All freezer purchases made by cheque will receive a £50 stock voucher only (unless purchased on the £199 deal where no stock vouchers will be issued).

Carte D'Or Scooping Freezers

A range of premium scooping freezers with Carte D'Or branding

The Carte D'Or branded Edera 13 and 10 scooping freezers are exclusively available from Total Refrigeration Ltd. They can display 13 or 10 Carte D'Or Artiscoop tubs in their specially angled display for maximum visibility AND has a highly reflective rear cover so that the ice cream in the display can be seen over a distance. Both Edera's also have two thermostats - one in the display and one in the storage compartment - this allows ice cream to be stored and displayed at the recommended temperatures.

Price includes:

- collars
- cone holder
- scoop
- washpots



Carte D'Or Edera 10

From **£2,049**^{+VAT}
Plus vouchers for ice cream worth **£1,200** RRP[†]

Stylish Carte D'Or scooping freezers at an affordable price

The J9 and J7 Extra scooping freezers display 9 or 7 Carte D'Or Artiscoop pans and have a reflective mirror film on the rear cover to provide visibility of the ice cream from a distance - helping to drive that impulse purchase. There is also an illuminated product strip that strongly communicates the Carte D'Or brand.

Price includes:

- collars
- cone holder
- scoop
- washpots



Carte D'Or J9 Extra

From **£1,259**^{+VAT}
Plus vouchers for ice cream worth **£900** RRP[†]

Model	Width (mm)	Depth (mm)	Height (mm)	No. in Display	Price £(Ex.VAT)	Ice Cream at RRP £(inc.VAT)	Vouchers Face Value Telephone	Vouchers Face Value On-line	Leasing Weekly £(Ex.VAT)
Carte D'Or Edera 13	1770	860	1274	13 x 5.5 ltr	£2199	£1200	£350	£400	£17.79
Carte D'Or Edera 10	1420	860	1274	10 x 5.5 ltr	£2049	£1200	£350	£400	£16.57
Carte D'Or J9 Extra	1656	723	1224	9 x 5.5 ltr	£1439	£900	£250	£300	£11.64
Carte D'Or J7 Extra	1341	723	1224	7 x 5.5 ltr	£1259	£900	£250	£300	£10.18

[†]Value of Carte D'Or ice cream at RRP from the ice cream stock vouchers when freezer is purchased online. For the avoidance of doubt, retailers are free to set their own retail prices. All freezer purchases made by cheque will receive a £50 stock voucher only.

Carte D'Or Scooping Freezers

The Carte D'Or Top 7 - a high quality scooping freezer at a highly competitive price



The Carte D'Or Top 7 scooping freezer displays 7 Carte D'Or Artiscoop pans. It is the perfect freezer for those wishing to move up from an SP6 or would like to invest a little more capital into scooping but it not be a large outlay.

Price includes:

- collars
- cone holder
- scoop
- washpots

£1,119^{+VAT}

Plus vouchers for ice cream worth **£600 RRP**[†]

Carte D'Or Top 7



£649^{+VAT}

Plus vouchers for ice cream worth **£450 RRP**[†]

A compact Front of House scooping solution

A small, affordable scooping cabinet for smaller sites with limited space. Also perfect for sites new to 'scooping' who want to test its success with minimal investment.

Carte D'Or SP6

Price includes:

- collars
- cone holder
- scoop
- washpots
- lockable lids

FREE
pavement sign
with every
Carte D'Or
Scooping Freezer

Model	Width (mm)	Depth (mm)	Height (mm)	No. in Display	Price £(Ex.VAT)	Ice Cream at RRP £(inc.VAT)	Vouchers Face Value Telephone	Vouchers Face Value On-line	Leasing Weekly £(Ex.VAT)
Carte D'Or Top 7	1367	690	1175	7 x 5.5 ltr	£1119	£600	£150	£200	£9.05
Carte D'Or SP6	998	709	1335	6 x 5.5 ltr	£649	£450	£100	£150	n/a

[†]Value of Carte D'Or ice cream at RRP from the ice cream stock vouchers when freezer is purchased online. For the avoidance of doubt, retailers are free to set their own retail prices. All freezer purchases made by cheque will receive a £50 stock voucher only.

Cashing in on winter

% share of ice cream in Winter, convenience channel.



27% of Ice Cream sales occur in the winter months in convenience* even with the snow last winter. This means winter is the ideal time to extend the ice cream season and it is a fantastic opportunity for retailers to maximize their sales.

Nearly 50% of these sales are in ice cream tubs in particular in luxury ice cream.

* Ben & Jerry's Cookie Dough is the No.1 ice cream in Convenience*



* Ben & Jerry's 3 top selling lines (Cookie Dough, Phish Food & Choc Fudge Brownie) account for 22% of dessert ice cream sales in Winter*

* Wall's Cream of Cornish 500ml is great as an affordable treat or as an accompaniment with a hot dessert or fresh fruit



* Carte D'Or Vanilla is the No.1 premium dessert in Convenience*



* The Carte D'Or brand is growing at +16% year to date*

* Viennetta Vanilla is the No.1 Family Dessert ice cream*



* Viennetta is a recession busting family dessert - perfect for all occasions and perfect for Sunday Lunch & Christmas

Recommended 18 Basket Maxivision Planogram



Recommended 12 Basket Slimline Planogram



Recommend that you keep 40% of cabinet for impulse ice cream and stock the other 60% with Take Home ice cream**

Recommended range for Maxivision and Slimline. This range can boost your winter sales.

Magnum Temptation
Feast
Magnum Classic
Magnum White
Cornetto Strawberry

Ben & Jerry's 500ml Cookie Dough
Ben & Jerry's 500ml Phish Food
Ben & Jerry's 500ml Chocolate Fudge Brownie
Haagen Daaz 500ml Strawberry Cheesecake

Carte D'Or 1 litre Vanilla
Carte D'Or 1 litre Chocolate Inspiration
Wall's Viennetta
Wall's Cream of Cornish

* Source: IM, Total Convenience impulse, 24 w/e March 08 vs 24 w/e March 09 **These are only recommendations & you are free to stock any range in your cabinet

6 Simple Steps to Success

How to make ice cream work for you!

1. Type of Freezer

A Wall's branded freezer:

- ♥ Adds impact and high visibility
- ♥ A Maxivision has been proven to sell on average 42%* more ice cream than a non-Wall's chest freezer
- ♥ Faster sales means bigger profits

2. Point of Sale

- ♥ External point of sale such as a Wall's sign or a Wall's bin will trigger the thought of ice cream
- ♥ Internal point of sale such as product boards will point the shopper in the direction of the ice cream and help them decide what they want to buy



- ♥ Use pavement signs to help drive impulse purchases



3. Product Range

- ♥ Stock the best selling ice cream lines to ensure a high turnover of sales
- ♥ Ensure you have sufficient product in stock
- ♥ Clear and visible pricing
- ♥ Stick to the Planogram
- ♥ New products generate high volume

4. Freezer Location

- ♥ Place the freezer near the till to gain the most impulse purchases
- ♥ Shoppers need to see the product to trigger the impulse purchase!

5. Freezer Maintenance

- ♥ One reason only 57% of intended ice cream purchases go ahead is because of unappealing freezers**
- ♥ Provide a 10cm gap between the wall and the freezer to allow the air flow
- ♥ Do not fill the freezer up above the loadline as products will defrost
- ♥ Defrost the freezer on a regular basis to allow the temperature inside to regulate and keep ice cream frozen
- ♥ A neat, clean and well presented product sells

6. Stock ice cream all year round

- ♥ Did you know that 27% of ice cream sales occur in the winter months in convenience?***
- ♥ Make sure you stock a range of take home ice cream, such as Viennetta, to capitalise on these sales

*Research conducted IRI September 2007, Maxivision I
**CTP 2003
***Source: IRI, Total Convenience Impulse, 24 w/e March 08 vs 24 w/e March 09
†Header board not available for all freezers in range

Old Ice Cream Freezers

Do you have an old free on-loan Unilever ice cream freezer?

It could look like...



...and doesn't look as good as this

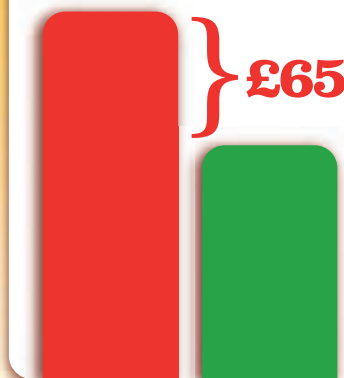
As well as losing out visually...

...did you know that you are losing money? The current Vista range of chest freezers are the most energy efficient ones we have ever sold.

On a like-for-like basis a Vista 12 costs £65 less to run per year than its old equivalent freezer.**

** Total Refrigeration test data 2009 - freezer model 29 VSL compared to Vista 12, electricity cost based on £0.13/KWh/24h

Electricity costs



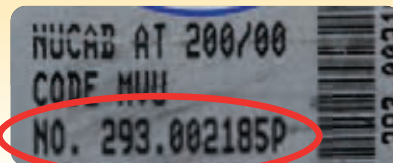
old equivalent freezer

Vista 12**

Did you also know

that if it is an old freezer that was supplied free of charge then we will **collect it and recycle it for free!**

Check the property plate on the reverse of your freezer to see if yours is eligible for a free collection, if the serial number is structured as shown here then it is a free on-loan freezer:



Trade your old free on-loan Unilever ice cream freezer in and get a Maxivision II or Slimline Maxivision II for only

£749 +VAT

This offer is valid for the first 100 orders only and no stock vouchers will be supplied as part of this offer.



Environment

'At Total Refrigeration we are committed to supporting the environment in any way we can. We strive to make our freezers more energy efficient and Ozone-friendly - we are planning on converting more of our range to use natural refrigerants in 2010.'

Dave Parkes, Managing Director

What are natural refrigerants?

R290 is known as Hydrocarbon and is a naturally occurring gas hence the term 'natural refrigerant'. It is non-Ozone depleting and does not produce greenhouse gases - making it an environmentally friendly refrigerant. An added advantage is that it is also more energy efficient than old refrigerants - not only does it cost less to run but it benefits the environment as well!



The Carbon Trust

Freezers that are on the Energy Technology List have this logo against them. This means that they have passed stringent tests and are energy efficient - saving you money on electricity costs. In addition, 100 per cent first-year Enhanced Capital Allowances (ECA) allow the full cost of an investment in designated energy-saving machinery to be written off against the taxable profits of the period in which the investment is made. The general rate of capital allowances for spending on plant and machinery is 20% a year on the reducing balance basis.



See www.eca.gov.uk for more details.

Woodland Trust

Total Refrigeration Limited are also actively supporting the Woodland Trust (Reg. Charity in England and Wales No. 294344; in Scotland No. SC038885) by planting a tree for every piece of refrigeration equipment recycled. Over 8,300 trees have been planted across the UK since the scheme began in 2006.



The team at Total Refrigeration has also been out with the Woodland Trust and helped to plant trees on a number of occasions. For more information on this please view the news page on our website: www.totalrefrigeration.co.uk/news



Disposal of refrigeration equipment

If you have a piece of refrigeration equipment that you no longer require we will be happy to provide you with a quote for the removal of this equipment from your site. It will then be disposed of correctly under the duty of care provisions of the UK environment protection legislation. For every piece of refrigeration equipment we collect and dispose of 97% of it is recycled.



Total Refrigeration Limited is a member of the Advantage Waste Brokers WEEE Producer Compliance Scheme and our WEEE Producer Compliance Scheme Membership Number is WEE/FC0255QV. Total Refrigeration take on the WEEE responsibility of refrigeration equipment we supply (from 13th August 2005) - this means that we will pay for the actual recycling of that equipment ensuring that it is disposed of correctly.

Collection & Disposal Charges

Model	Price £ (EX. VAT)
Unilever owned freezer	Free
Collection of non-Unilever owned freezer (at the same time as a new freezer delivery)*	£75.00
Collection only of non-Unilever owned freezer (not at the same time as a new freezer delivery)*	£125.00

*Size limit applies



Customer Information

All orders placed with us are subject to our terms and conditions which can be found at our website www.totalrefrigeration.co.uk Please familiarise yourself with these terms and conditions before placing your order.

Total Refrigeration have teamed up with Bibby Leasing to offer leasing for those Customers who wish to pay for equipment* over a period of months rather than paying the whole purchase price at the start.

- The initial outlay is minimal - as little as three months payments to start with.
- You choose the repayment period - from 2 to 4 years.
- Not paying the full amount at the start means that your capital can be used elsewhere.
- VAT is paid on each payment that is made monthly rather than added to the purchase price at the start - which can also be a significant sum.
- Whilst ice cream is being sold from the freezer the profits can contribute to the repayments rather than having to use saved capital.
- You know how much you need to pay each month which can help manage your budgets.
- Tax incentives on leasing - 40% can be claimed back per year on your tax bill as opposed to 25% when purchasing. The customer is advised to seek guidance and advice from their accountant.

Please note that leasing is only available for business use and is subject to status. Call for details. Prices shown for leasing in this brochure are based on the weekly equivalent charge over 3 years for businesses that have been trading for over 12 months, are correct at the time of going to print and are subject to change without notice. All lease facilities are underwritten by a customers individual circumstances at the time of proposal. For more information see www.bibbyfinancialservices.com

*Leasing is subject to a minimum order value of £1000. Business users only and written quotes upon request.

Redemption of your Unilever Ice Cream Voucher



- Where vouchers are supplied as part of the freezer price the appropriate vouchers will be sent by post to the customer along with their invoice for the sale.
- Invoices (and vouchers) are posted to the customer after the freezer has been delivered and paid for.
- Vouchers should be sent to the handling house in line with instructions clearly stated on the reverse of the voucher.
- Vouchers will be redeemed by the handling house and the cheque sent to the customer provided all terms & conditions are met.

Total Refrigeration One Stop Shop

Unilever UK Limited has developed, in conjunction with Total Refrigeration Limited, a 'One Stop Shop' facility for our retail and catering customers. In addition to supplying ice cream freezers at the leading edge of technology and environmental care Total Refrigeration Limited can offer customers additional warranty on freezer purchases, collection and disposal of redundant cabinets. Total Refrigeration Limited can offer a range of equipment, both standard and customised, covering a range of front and back of house requirements.

Freezer Warranty and Extended Warranty

- All freezers are sold with a 1 year full parts and labour warranty.
- An additional 2 years full parts and labour warranty can be purchased at the time of your freezer purchase:

Model	Additional Warranty Cost £(Ex. VAT)
Wall's Vista 6 / 12 / 18 Ben & Jerry's Vista 6 / 12 Ben & Jerry's Counter Top Unilever 1.0m / 1.5m Storage Freezer Wall's Cornetto Soft Wall's Take Home SP125G / SP150G	£66.00
Ben & Jerry's Midi Vista Ben & Jerry's Hawking Trolley Wall's Hawking Trolley Wall's Take Home VT150 Island Freezer Carte D'Or SP6	£99.00
Walls Maxivision II Wall's Slimline Maxivision II Wall's Take Home VT200 Island Freezer Wall's Take Home VT250 Island Freezer Ben & Jerry's Slimline Maxivision II Ben & Jerry's Upright Vista Carte D'Or Top 7 Carte D'Or J7 Extra	£143.00
Carte D'Or J9 Extra	£165.00
Carte D'Or Edera 10 / 13	£275.00

Warranty Exclusions

Total Refrigeration Ltd reserve the right to charge for faults not covered by the warranty. Exclusions are:

- Incorrect siting of the cabinet.
- Calls resulting from incorrect installation.
- Calls resulting from electrical supply, plug or fuse problems or use of electrical extension.
- Failures caused by water supply failure or other plumbing or drainage problems.
- Calls requiring adjustments to thermostats, timers, controllers or on/off switches.
- Defrosting cabinets or calls resulting from lids/doors not being closed.
- Lack of maintenance e.g. blocked condensers, blocked drains, filter changes etc.
- Exceeding the load level or incorrect product in the cabinet e.g. ice pops in freezers, warm drinks in chillers etc. as this may affect performance and increase operating costs.
- Lid, doors, glass sections, frames or cosmetic damage not notified at the time of delivery or installation.
- Replacement of seals/gaskets or light tube/lamp replacement.
- Operator misuse.
- Product or any other losses.

Please that warranty is not transferable.

For full terms and conditions of business and warranty terms and conditions please refer to our website www.totalrefrigeration.co.uk

On all new freezers you will be able to find a quick start guide attached to the rear of it.

Terms & Conditions

1. The Unilever Freezer Sales Scheme is made by Total Refrigeration Limited in conjunction with Unilever UK Limited.
2. This Freezer Sales Scheme is strictly whilst stocks last and may be withdrawn without notice. We reserve the right to alter prices without notification.
3. All items are subject to VAT at the current rate. All prices shown exclude VAT.
4. The Freezer Sales Scheme is only open to retailers in the U.K.
5. Prices include delivery to U.K. mainland only. Prices available on request for delivery outside the U.K. mainland.
6. Any freezer supported by vouchers cannot be exchanged for cash or any other goods other than those stated. Any vouchers lost or stolen cannot be replaced.
7. In the unlikely event of a breakdown neither Unilever UK Limited or Total Refrigeration Limited will be liable for any consequential loss or damage other than repair of the freezer if within the one year warranty, provided that the freezer has been well maintained, clean and is being operated in a suitable environment.
8. All new freezers are purchased with a one year parts and labour warranty.
9. The freezers in the Sales Scheme are suitable for the storage of frozen products and should not be used to freeze down products such as ice pops etc. as this may affect performance and increase operating costs.
10. Models shown are for illustrative purposes only. Please note freezer graphics may vary.
11. It is the retailer's responsibility to ensure that any products stored in the freezer are insured and the retailer should make their own arrangements.
12. Cancelled orders and abortive deliveries will incur a surcharge.
13. Title and equipment supplied by Total Refrigeration Limited will pass to the customer upon payment in full.
14. Prices quoted include standard delivery to an unrestricted ground floor UK mainland site.
15. Waste Electrical & Electronic Regulations (WEEE) - in accordance with the WEEE regulations Total Refrigeration is responsible for the final disposal of all equipment purchased on or after the 13th August 2005 - customers will be charged for the distribution costs at the time of collecting the unit.
16. For equipment purchased before 13th August 2005 Total Refrigeration will make a commercial charge on the customer which covers both the disposal of the unit(s) and the associated distribution costs.
17. Total Refrigeration Limited undertakes to either replace free of charge or to put in good working condition (at TRL's absolute discretion) any parts of the freezer, or the freezer itself, that becomes defective, at all times in accordance with the guarantee set out in TRL's Conditions of Business which can be found at www.totalrefrigeration.co.uk/terms.

Can we help?

0845 127 2527

Our Customer Service Team are here to help ALL customers. If you have a question about your freezer please feel free to call us.

For more information on Point Of Sale material please visit www.iceshop.co.uk

Total Refrigeration Limited, Unit 2A, East Tame Business Park, Rexcine Way, Talbot Road, Hyde, Cheshire, SK14 4GX
Tel: 0845 127 2527 Fax: 0161 366 7374 Email: sales@totalrefrigeration.co.uk www.totalrefrigeration.co.uk

Consumer Credit License number: 622837/1

Total Refrigeration Limited Registered in England & Wales No 562262 Registered office: Unilever House, Springfield Drive, Leatherhead, KT22 7GR