



Colours



Design, Consultancy, Supply, Project Management

Standard Colour Range

S+B have worked closely with specialist interior designers and combined this with our own practical experience gained from many thousands of educational, R&D and general industrial laboratory fit outs, in developing a standard colour range.



R&D Lab



6th Form Lab

The S+B range covers worktops, storage cabinetry carcasses, door and drawer fronts. We have determined the most cost efficient stock quantities to provide best value and best possible lead times for customers.

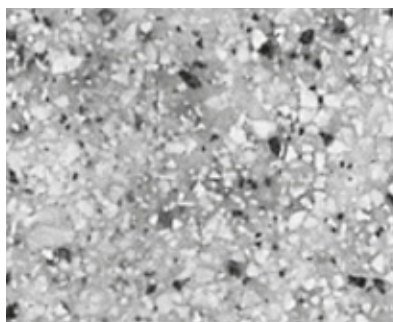
A wide range of alternatives are available, which depending on suppliers lead times, minimum order quantity requirements and any attendant waste factor considerations may or may not have implication to cost and or programme.

S+B is always prepared to discuss customers preferred colour matrix, which may not be covered within the standard range and will apply best endeavours to avoid implication to cost or programme or a least keep the implications to an absolute minimum.

This carefully developed range is designed to give customer choice, provide a serviceable, easy to clean and maintain system and at the same time provides a smart, modern environment with timeless, clean, crisp lines.

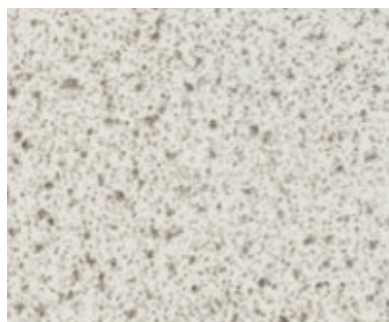
Worktops

Corian®



Sierra Dusk - Speckled Light Grey

Trespa Athlon

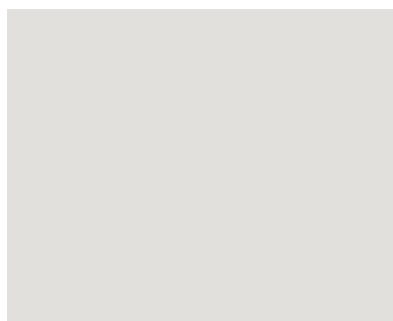


S0015 - Speckled Light Grey

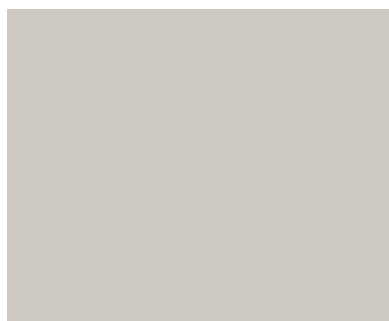
Post Formed Plastic Laminate



Maryland Clair - Speckled Light Grey



Pearl Grey - Plain Light Grey



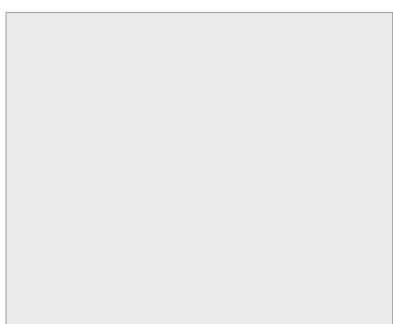
E002 - Plain Light Grey



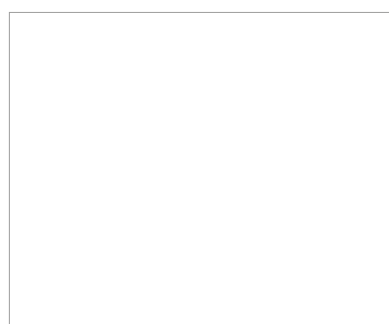
Gris Poloma - Plain Light Grey

* Polylab - supplied in speckled light grey.

Carcass



U112 - Light Grey



K101 - White

Door & Drawer Fronts

The standard door and drawer front options are greater in number than the colours available for carcasses, therefore when mixing the two, S+B recommends that edge banding be supplied the same colour as the carcass or a neutral light grey due to difficulty matching the full door and drawer front range with identical edge banding.

S+B will supply the following as standard unless otherwise discussed and agreed :

- Steel legs and fascia rails – epoxy powder coated light grey
- Label holders – full width, self coloured aluminium extrusion
- Handles – concealed for clean line with option for stainless steel D handles

The S+B standard range has been developed to provide choice and also to maximise order processing, purchasing, planning, manufacture, waste management and installation efficiency.

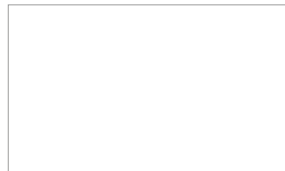
Alternatives are available which may or may not have implication to cost and or programme depending on supplier availability and minimum order quantity requirements. S+B will gladly discuss the alternatives and advise of any implication.



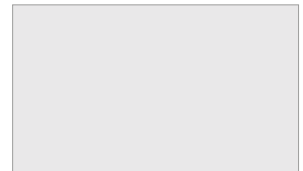
3401 - Pewter Grey



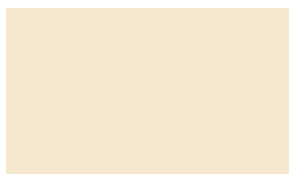
6469 - Sea Blue



K101 - White



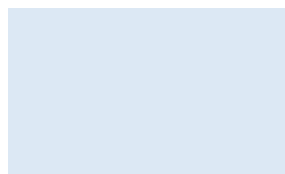
U112 - Light Grey



6465 - Cotton



6470 - Pine Green



0392 - Powder Blue



8180 - Quicksilver



6471 - Sunny Yellow



6472 - Rosso



3019 - Sea Jade



8183 - Royal Blue



D381 - Beech



D375 - Maple



6470 - Pine Green door fronts



Colour : 6472 - Rosso door fronts



8183 - Royal Blue door fronts



Colour : 3401 - Pewter Door fronts



S+B UK Labtec Street, Swinton.

Visit our website for more details - www.splusb.co.uk

Services: Design • Project Management • Manufacture • Installation
Products: Lab Engineering • Fume Cupboards • Educational Furniture
Markets: Healthcare • Research • Education • Food • Utilities and Industry



British made

Designed and Manufactured at our factory in Manchester.

Labtec Street, Swinton
Manchester M27 8SE

t: +44 (0)161 793 9333
f: +44 (0)161 728 9149

e: sales@splusb.co.uk
www.splusb.co.uk

