



miniecosmo

Body and Beauty Solutions

PORTABLE SYSTEM

4 IN 1

- Multipolar Resistive Radiofrequency
- TransDermal
- Cavitation
- Photobiostimulation

5 IN 1

- Multipolar Resistive Radiofrequency
- TransDermal
- Cavitation
- “Ondamass” - Shock Waves
- Photobiostimulation

4 IN 1

Multipolar Resistive Radiofrequency:

A non-invasive technique to reduce cellulite and skin laxity, by stimulating new collagen production. The result is a reduction in volume and a long-lasting skin-tightening effect, whilst giving the sensation of a warm massage.



Transdermal:

Uses modulated electrical currents to optimise body, face and breast treatments; by delivering active skin-care agents through the skin to the deeper target areas where they will have maximum effect. Effective for cellulite, muscle-toning, sebum-regulation and anti-ageing treatments.



Cavitation:

A non-invasive treatment for unsightly fat and cellulite reduction. Results in stimulation of the micro-circulatory system, increased muscle toning and a better absorption of anti-cellulite cream.



Included in Resistive Radiofrequency

Included in Transdermal

Photo Bio-Stimulation:

Use of LED (light source) of different wavelengths. It is increasingly used in the aesthetic field to complement other technologies and to improve numerous blemishes, using the different properties of the various wavelengths.

5 IN 1

“Ondamass” - Shock Waves:

“Ondamass” therapy results in substantial improvement to local blood circulation and also stimulates the production of collagen. It strengthens the Dermis and Epidermis. As a consequence, skin and connective tissue becomes more toned and compact, and regains its natural elasticity, giving visible, lasting improvements in skin texture.



OPTIONAL

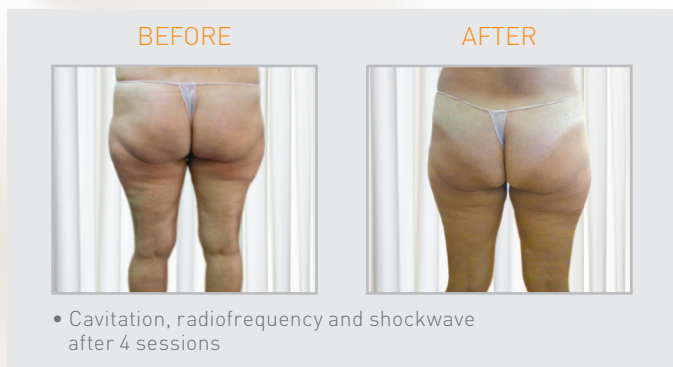
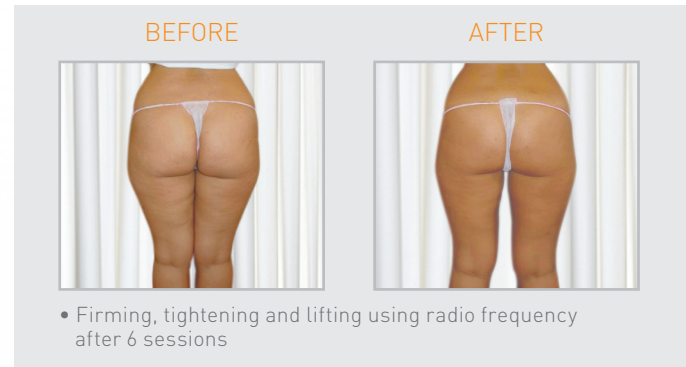
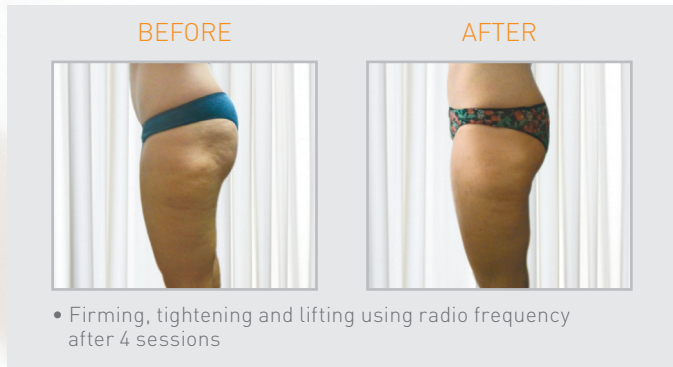
• minieCOSMO stand

• minieCOSMO suitcase

• Shock Waves “Ondamass”

TREATMENT:

- ANTI-AGEING
- SKIN REJUVENATION
- NON-INVASIVE FACE LIFT
- NON-SURGICAL GLUTEUS LIFT
- NON-SURGICAL ABDOMEN LIPOSUCTION
- LIFTING EFFECT
- BREAST TIGHTENING
- BEAUTY AND BODY
- FAT REDUCING
- ACNE AND ROSACEA
- STRETCH MARKS
- CELLULITE
- FIRMING AND TIGHTENING



ALL TREATMENTS WERE OPTIMISED USING ELITS WELLNESS COSMETIC RANGE

TECHNICAL DATA

Power: 230 Vac / 50 - 60 Hz
Power Fuses: 2 x 8 Amp 1 250V

Section Module
Dimensions - Weight: 37 x 37 x 28 cm - 15 Kg

Type of apparatus: BF class

Resistive Multipolar RadioFrequency

Output Frequency Bi-Polar HandPiece (2 Pole):	450 kHz +/- 10%
Output Frequency Tetra-Polar HandPiece (4 Pole):	820 kHz +/- 10%
Output Frequency Octa-Polar HandPiece (8 Pole):	1,00 Mhz +/- 10%
Maximum Output Voltage:	200 Vac
RF Power:	220 Watt

TransDermal

Wave Range Frequency:	from 1.600 Hz to 2.100 Hz
Maximum Output Voltage / Current:	60 Vac / 1,5 mAmp

Cavitation

Output Frequency:	36 - 40 kHz ± 10% with frequency sweep +/-0,5KHz
Ultrasound Peak:	105 Watt
OutPut Channel:	1
Number and Type of programs:	1. Fat - 2. Cellulite

Photobiostimulation R Y B

R: Red cool Light - 635 nm Maximum Output Power: 4,4 mW/cm2	450 kHz +/- 10%
Y: Yellow Cool Light - 590 nm Maximum Output Power 0,1 J/cm2	450 kHz +/- 10%
B: Blue Cool Light - 465 nm Maximum Output Power 24,7 mW/cm2	450 kHz +/- 10%
Applied Part: Class 1, type B	450 kHz +/- 10%

"OndaMass" – Shock Waves

Handpiece size:	diameter 38 mm
Maximum Force:	16 Newton Output: 3 levels
Work frequency:	3.5 Hz - 7.5 Hz - 11.0 Hz
Working:	Electromechanical Inductive



CE EAC

elits®
wellness
www.elitsgroup.it

ELITS srl - ITALY

distributed by:

Beehive Solutions Ltd

Tel. 020 8550 9108

E-mail: contact@aestheticmarket.co.uk

Web: www.aestheticmarket.co.uk