

Thoughts about Furniture

THiNKFURNiTURE™

New Broad Street House
New Broad Street
London
EC2M 1NH

Company Overview

Think Furniture was created in the spring of 2005 and became a limited company during 2006. Since its formation the company has charted a steady growth in both turnover and company size.

Working closely alongside its sister company, Think Interiors, the two companies offer their clients a full range of Interiors services coupled with an extensive furniture Portfolio.

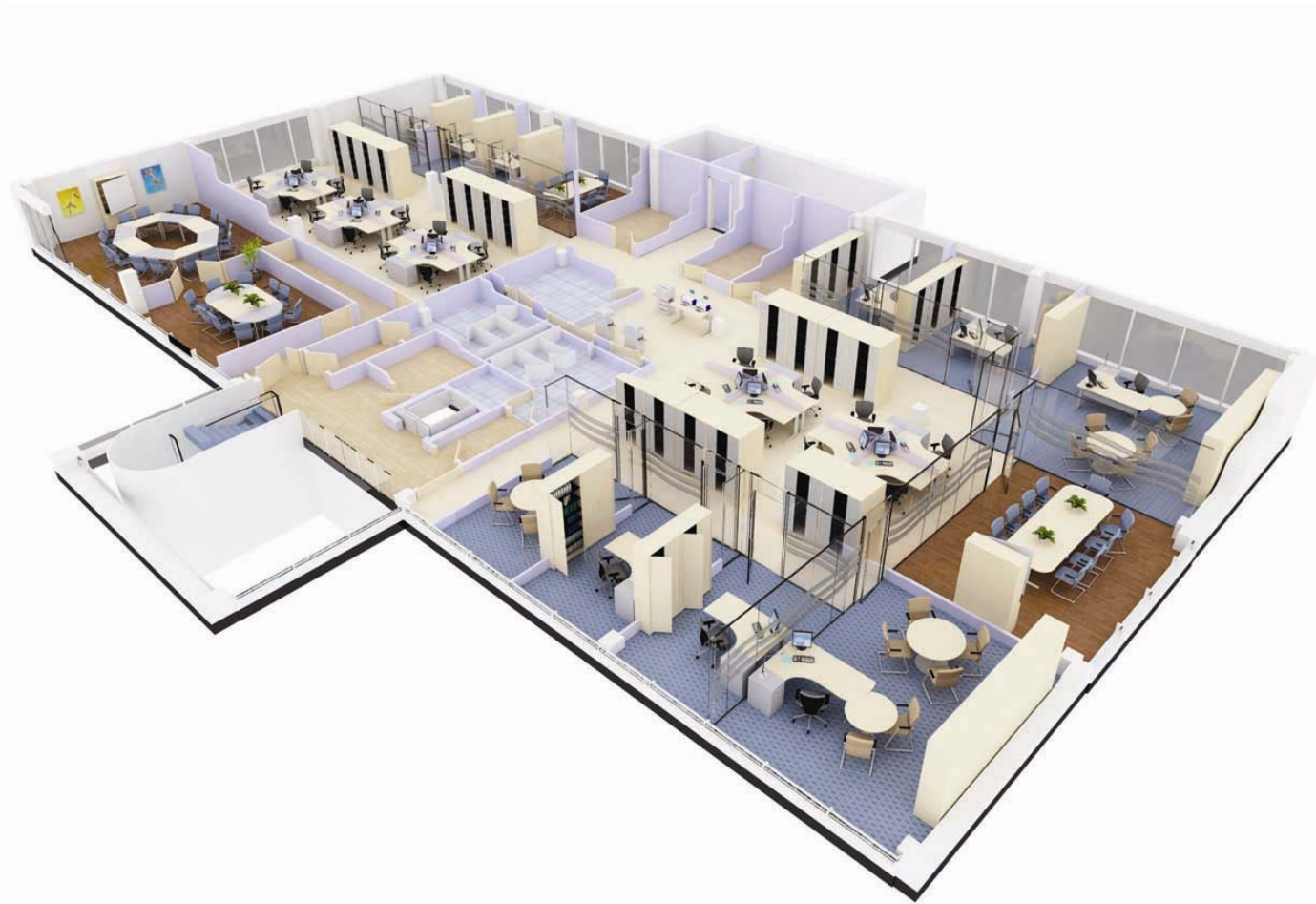
Think Furniture is an independent furniture provider. This ensures that we listen to our clients needs and then put forward proposals that fit perfectly with our clients brief, opposed to having to 'force feed' a particular solution because we are tied in to specific manufacturers. This freedom of choice gives us the competitive edge particularly on projects where deadlines or budgets are tight. We maintain close working relationships with our manufacturing partners to ensure our clients are offered good levels of service and can enjoy full product guarantee's and also continuity guarantee's (on specific ranges).

Aside from the actual supply and installation of Furniture we offer a range of 'value added' services to our clients. This provides you with the ability to make informed decisions and also gives peace of mind that the chosen scheme will work as you intend.

Please find enclosed a brief overview of our services which are available alongside our procurement options.

THiNKFuRNiTURE™

New Broad Street House
New Broad Street
London
EC2M 1NH



Design Ideas

THINKFURNITURE™

New Broad Street House
New Broad Street
London
EC2M 1NH

We help clients design, create and implement modern working environments.....



Initial impressions are very important to how your organization is perceived. Think Furniture can provide tailored solutions as well as more economic modular systems. We also consider the latest DDA Rulings to ensure Compliance and access for wheel chair users etc..



From Receptions

THINKFURNITURE™

New Broad Street House
New Broad Street
London
EC2M 1NH



The right working environment allows employees to be both productive and also helps minimise work related illness's such as bad backs etc...

Think Furniture offer a large portfolio of desk and work furniture from the very budget To the design led. We also offer free impartial advise of what will work for your environment and can offer full space planning facilities.



Working
Environments

THINKFURNITURE™

New Broad Street House
New Broad Street
London
EC2M 1NH



The office chair is probably the single most important aspect of the modern working environment as this directly impacts on the human being sitting upon it.

All chairs that we recommend have a synchro mechanism and can be fitted with a range of additional back support features. More importantly we take the time to visit our clients post installation to explain the chair functions and how it will help their posture.

Sitting comfortably
Task Chairs

THINKFURNITURE™

New Broad Street House
New Broad Street
London
EC2M 1NH



Boardrooms and meeting areas from the bespoke with AV and in built conference facilities to the small room set aside for internal meetings we have a large portfolio of different solutions



Boardrooms & Meeting Rooms

THiNKFuRNiTURE™

New Broad Street House
New Broad Street
London
EC2M 1NH



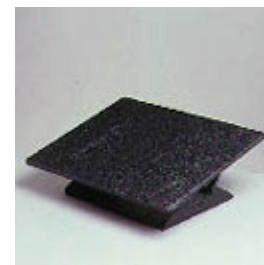
Storage systems that are fitted to wall space or can be freestanding and therefore flexible to move and re-configure. We can help create price comparables as well as conduct a storage audit to see how much capacity you currently have and how much is being effectively used.



Office Storage

THINKFURNITURE™

New Broad Street House
New Broad Street
London
EC2M 1NH



Active Ergonomics

THINKFURNITURE™

New Broad Street House
New Broad Street
London
EC2M 1NH



Design Led

Breakout and
Touchdown

THINKFURNITURE™

New Broad Street House
New Broad Street
London
EC2M 1NH

Summary

Think Furniture are an independent provider of furniture solutions. We have a large portfolio of manufacturing partners and work primarily with those companies who manufacture both ethically and to high standards (both in terms of manufacturing and also in terms of their environmental standards).

We offer our clients a consultative approach i.e. we prefer to listen to your needs first before providing any recommendations. We can also offer full CAD space planning and other services such as storage audits and ergonomic assessments.

Think Furniture have recently carried out furniture services for the following Companies :

Laird PLC, Pall Mall
Children's Investment Fund, West End
Bromley My Time, West Wickham
Terrapinn Media, Clerkenwell
G2 Speech (Healthcare company)
Charles Russell LLP , Solicitors
Mastertronic Software, Clerkenwell

We would welcome the opportunity to see if we could help with any of your future requirements'

Tony King

Director

THINKFURNITURE™

New Broad Street House
New Broad Street
London
EC2M 1NH