

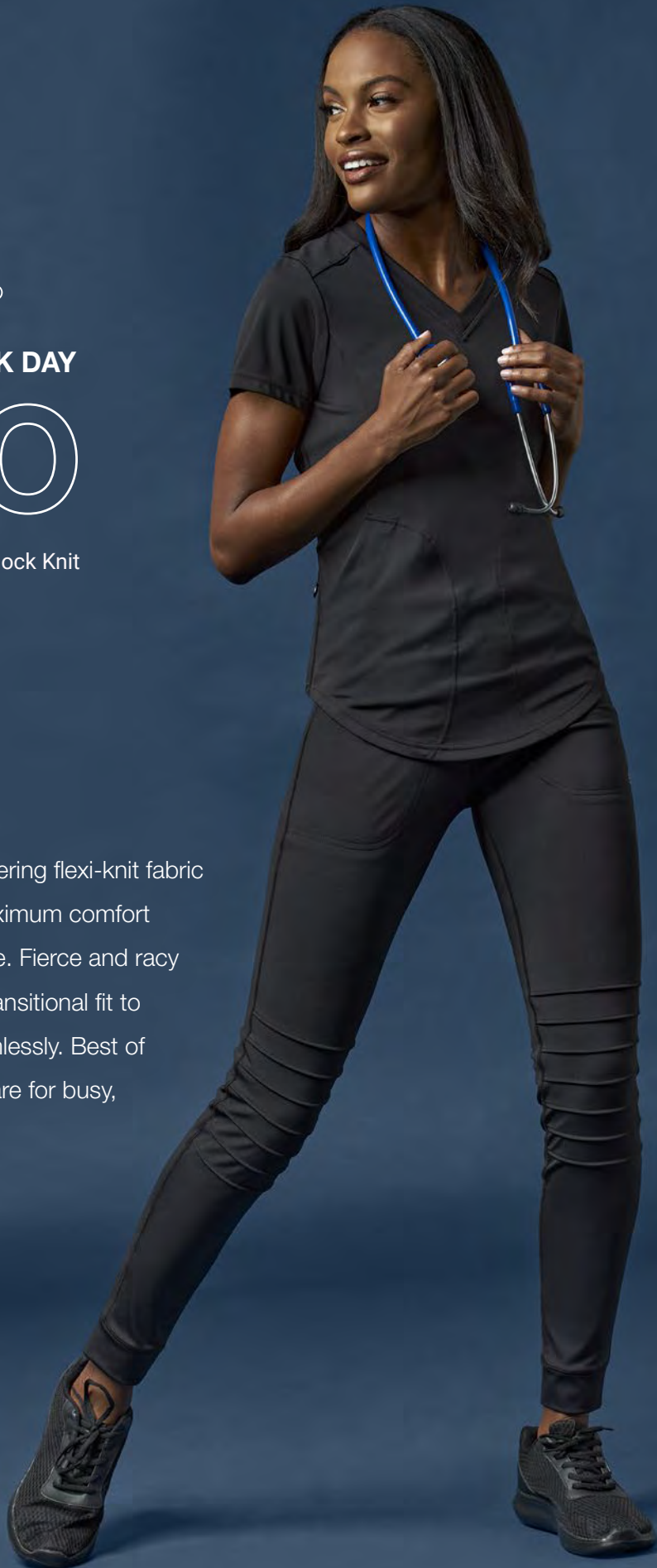


JUMP START YOUR WORK DAY

MOTO

85% Polyester / 15% Spandex Interlock Knit
Women's Modern Fit
Women's True-Plus Fit
Men's Modern Fit

MOTO features an incredibly flattering flexi-knit fabric that fits close to the body for maximum comfort and a sleek, polished appearance. Fierce and racy styling details ensure a perfect transitional fit to carry you from work to play seamlessly. Best of all, MOTO features hassle-free care for busy, on-the-go professionals.



SCAN FOR
PRODUCT VIDEOS



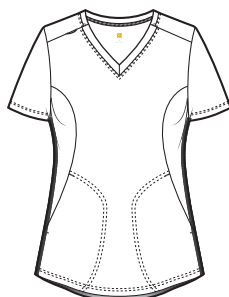


**6199
WOMEN'S
MOTO V-NECK TOP**

WOMEN'S MODERN FIT
XS - 2XL

(Size M length: 27 ¾")

- BLAC
- NAVY
- PWHT
- WINE



- Flattering curved V-Neck
- Curved sleek side entry pockets
- Shoulder badge loop
- Shape enhancing curved princess seams
- Back hip pocket with invisible zipper
- Curved hem

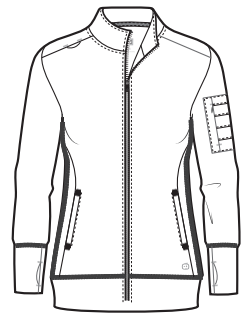


**8199
WOMEN'S
MOTO JACKET**

WOMEN'S MODERN FIT
XS - 2XL

(Size M length: 27 ¾")

- BLAC
- NAVY
- PWHT
- WINE



- Mock neck collar, shoulder badge loop
- Dye-to-match full zip front
- Invisible Zip pin-tuck detailed pocket on wearer's left sleeve
- Two deep side entry welt pockets
- Two large interior top loading pockets
- Self-cuff with thumb holes



**5199
WOMEN'S
MOTO PINTUCK PANT**

WOMEN'S MODERN FIT
XS - 2XL

(Size M leg opening: 4 ¾",
Inseam: 28 ½"(regular)

- BLAC
- NAVY
- PWHT
- WINE



- Mid-rise fully elasticized pull-on waist with dyed-to-match drawstring
- Front side pockets with invisible zipper, two back patch pockets
- Moto inspired pin-tucks at knee
- Self-fabric bottom cuffs

Jogger Leg