

Monoplan

The Monoplan is a top quality moveable wall system that allows you to optimise the use of available space with speed and ease. This sophisticated system does not require a floor track and yet once positioned the panels form a rigid wall giving all the properties and appearance of a permanent wall.

*Education Centre,
Eden Project, Cornwall*

Monoplan

The Monoplan system comprises panels up to 1240mm wide which interlock to form a wall. Actual panel widths are determined by the site aperture, there are no standard sized panels or 'make up' panels.



Features and benefits

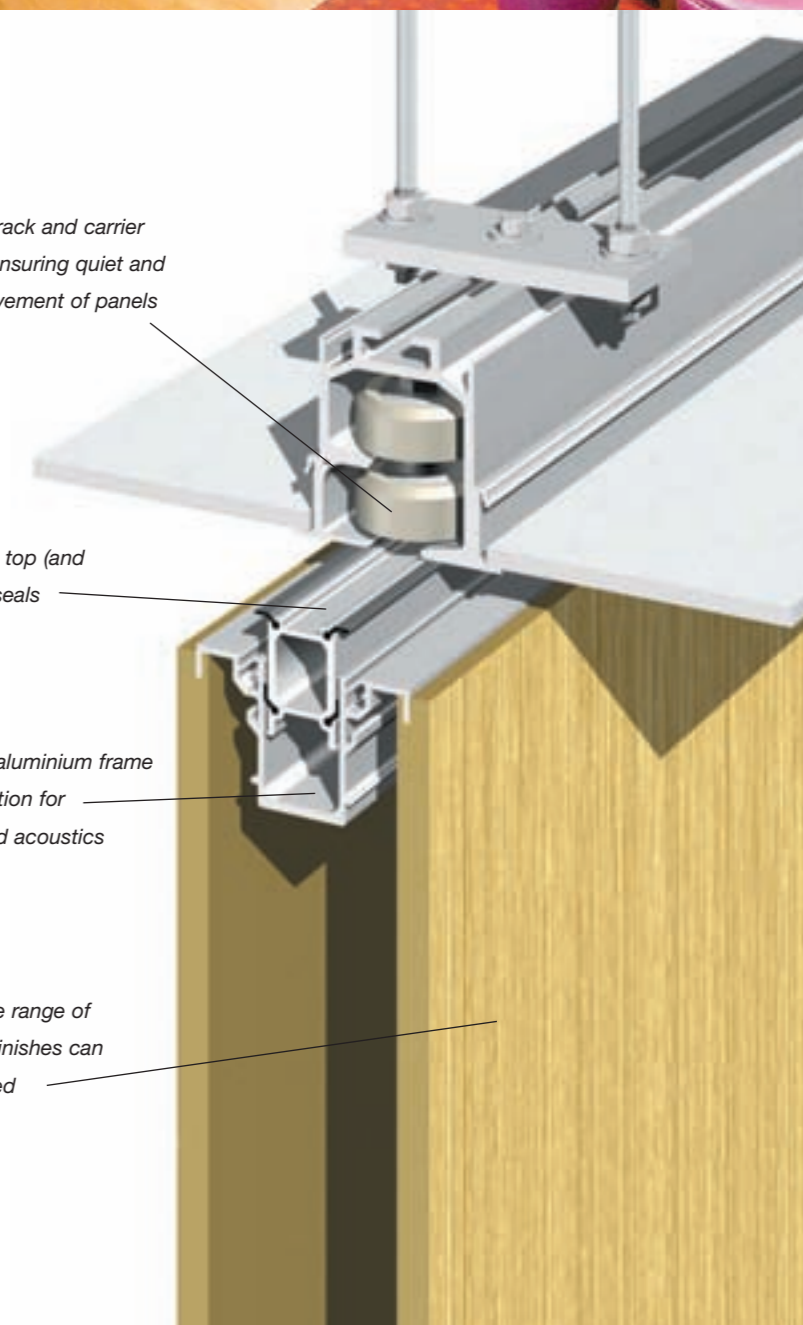
- Top hung system without the need for a floor track
- Retractable top and bottom seals ensure effortless movement of panels
- Combines elegance with robust construction
- Concealed or exposed panel edge profiles
- Numerous panel stacking options for complete flexibility
- Sealed for life roller assemblies provide smooth and silent movement
- The system offers various levels of sound reduction
- Extensive range of surface finishes available

Unique track and carrier system ensuring quiet and easy movement of panels

Operable top (and bottom) seals

Isolated aluminium frame construction for enhanced acoustics

Extensive range of surface finishes can be applied





Monoplan

Bespoke solutions

Each moveable wall is specifically made to your requirements. Of course, not all walls are simple straight line divisions. Pass doors, Angles or Vision Panels may be included in the design.



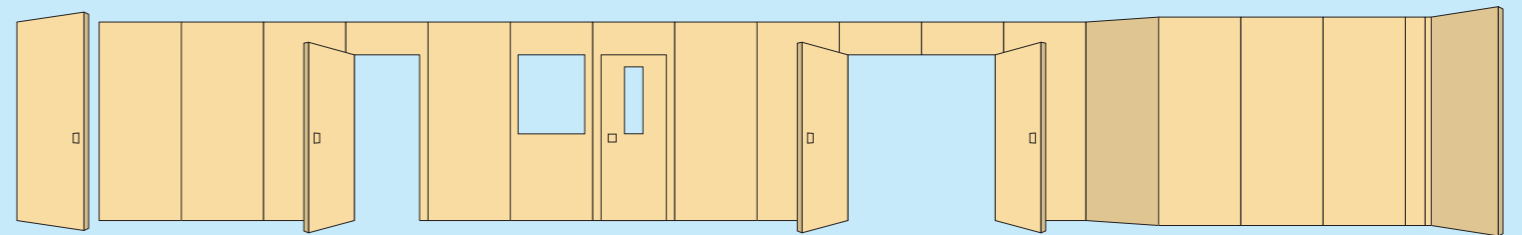
Durham County Hall

Operation

When moving a wall panel there is a 20-25mm gap between the top of the panel and the underside of the head track, there is a similar gap between the bottom of the panel and the floor. Once a panel is positioned, acoustic integrity is maintained along the top and bottom of the panel by extending pressure seals. The pressure seals are extended and retracted by a single 180° turn of a removable operating handle.

Final closure of the wall is achieved by extending a telescopic sleeve on the last panel. This action simultaneously extends the top and bottom seals.

Touch Base in Swindon
Monoplan 110



Illustrated above are some of the special features offered

Construction

Wall panels are of double skin construction with a robust internal aluminium frame. The panel faces are not 'hard' fixed to the frame and therefore when sound waves 'hit' one side of the wall the vibration caused is not directly transferred to the opposite face. Aluminium edge profiles may be CONCEALED, OR EXPOSED to provide a trim.

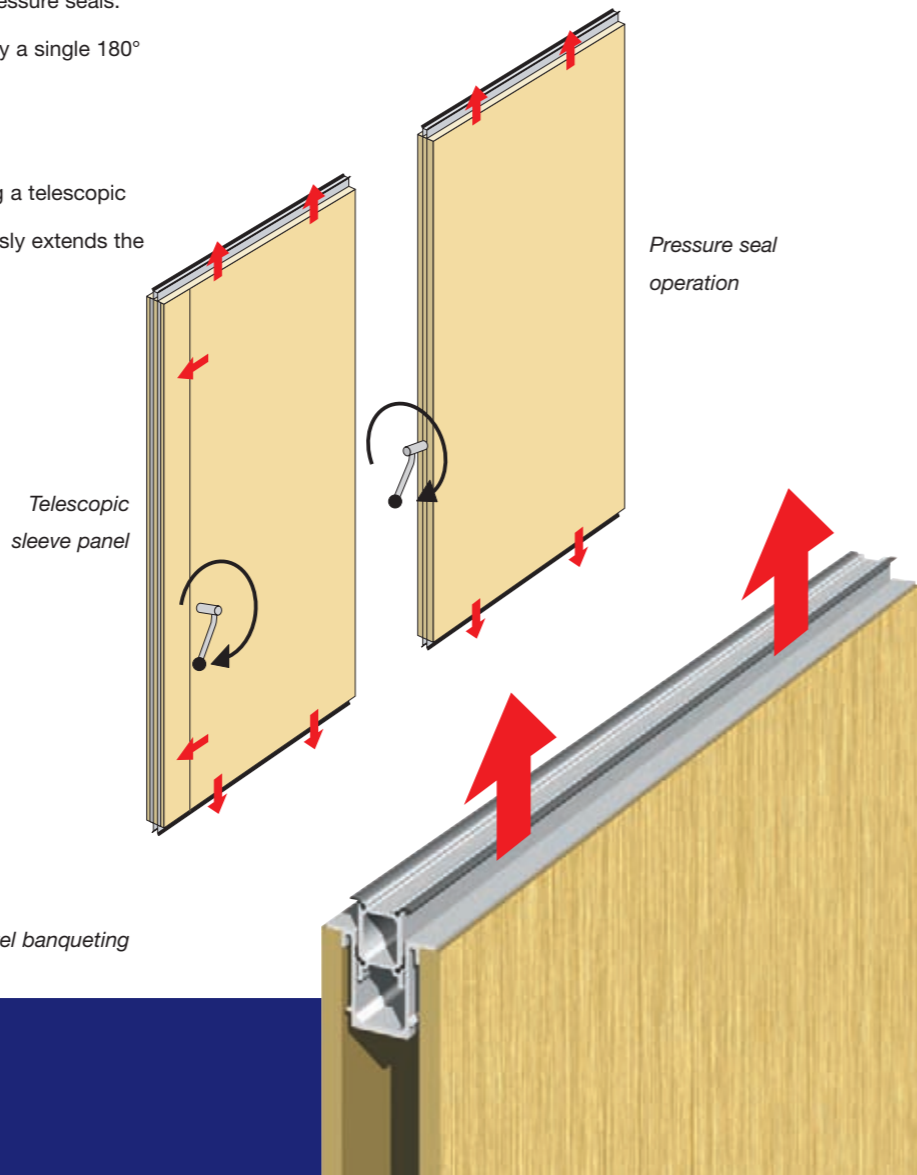
Heavy duty rubber gaskets are fitted to the panel profiles ensuring maximum acoustic sealing to all surrounding surfaces. The highest levels of sound reduction are achieved by

introducing rubberised bitumen membranes and mineral wool insulation to the core of each panel.

The rapid action mechanism, which operates the retractable seals, is designed to exert sufficient pressure to achieve the high levels of sound reduction offered. The retractable seals are designed to tolerate deviations in floor level and the deflections of supporting structures. The tolerance limit is evaluated for each individual application.



Hotel banqueting



Concealed panel profiles

Exposed panel profiles

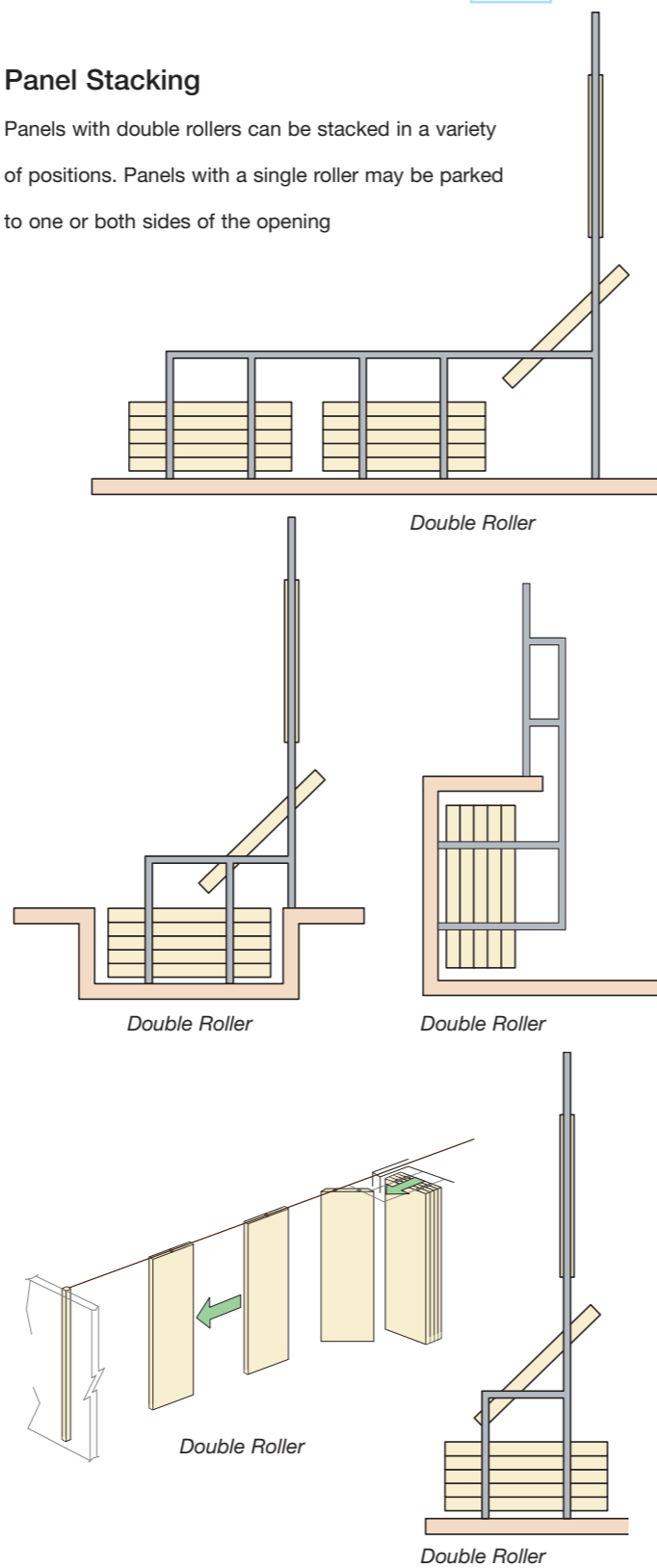


6.8m high panels with a single central roller

Monoplan

Panel Stacking

Panels with double rollers can be stacked in a variety of positions. Panels with a single roller may be parked to one or both sides of the opening

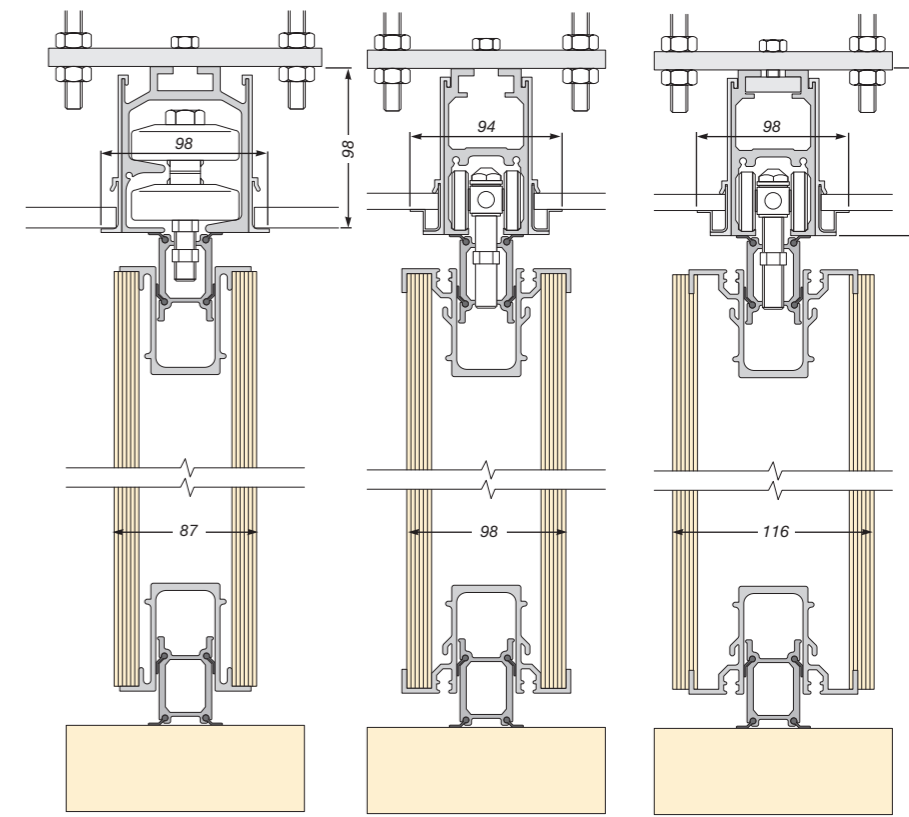


Panel options

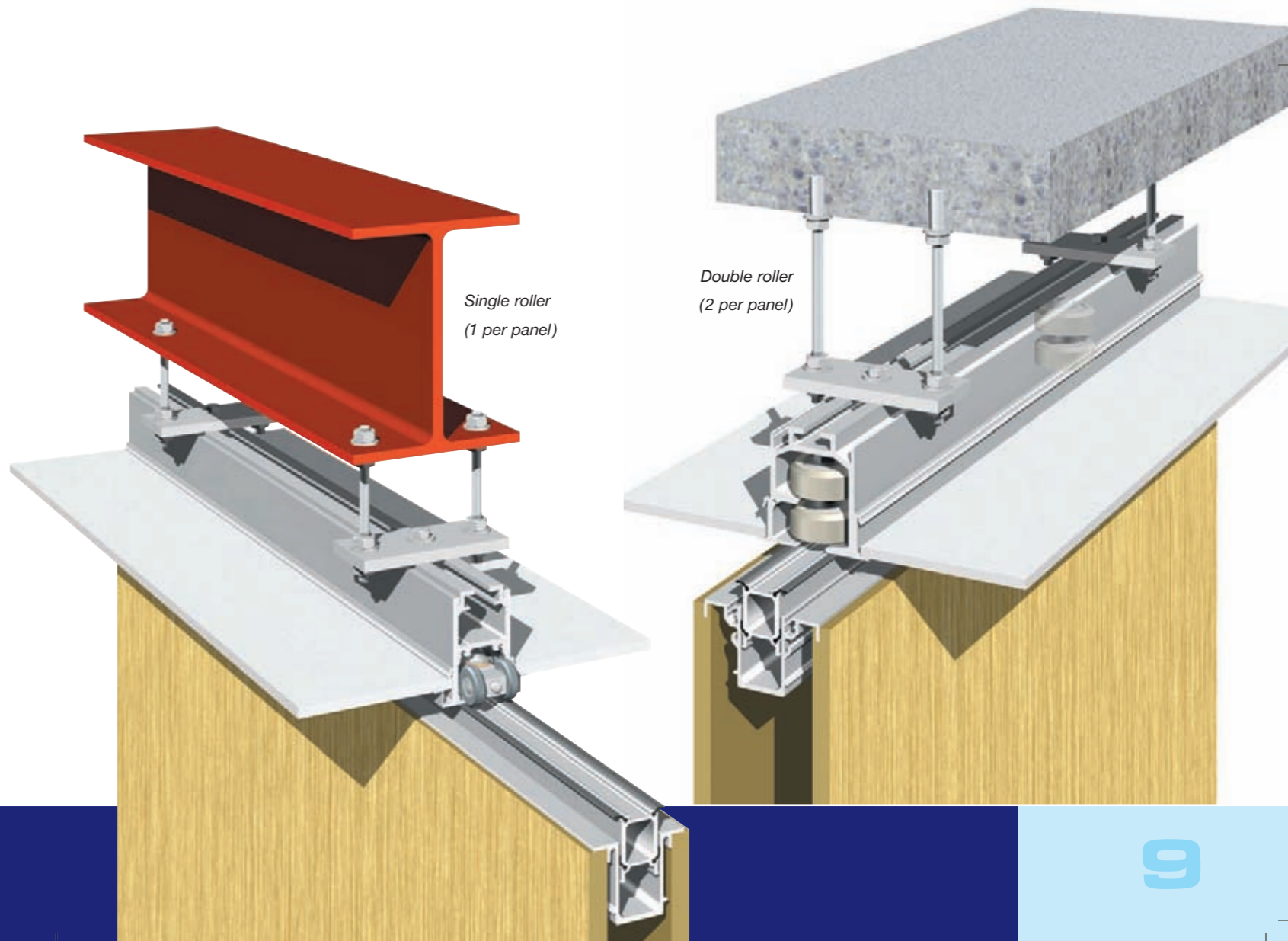
There are 3 panel options; Type 85, Type 100, and Type 110. Type 85 and Type 100 have an aluminium edge trim. Type 110 has a concealed profile detail allowing the face finish to return around the edge of each panel.

Track Types

There are 2 track types. One for single roller installations and one for double rollers. Each panel option may have either track type.



Type 85 With double roller track
Type 100 With single roller track
Type 110 With single roller track



Monoplan-S

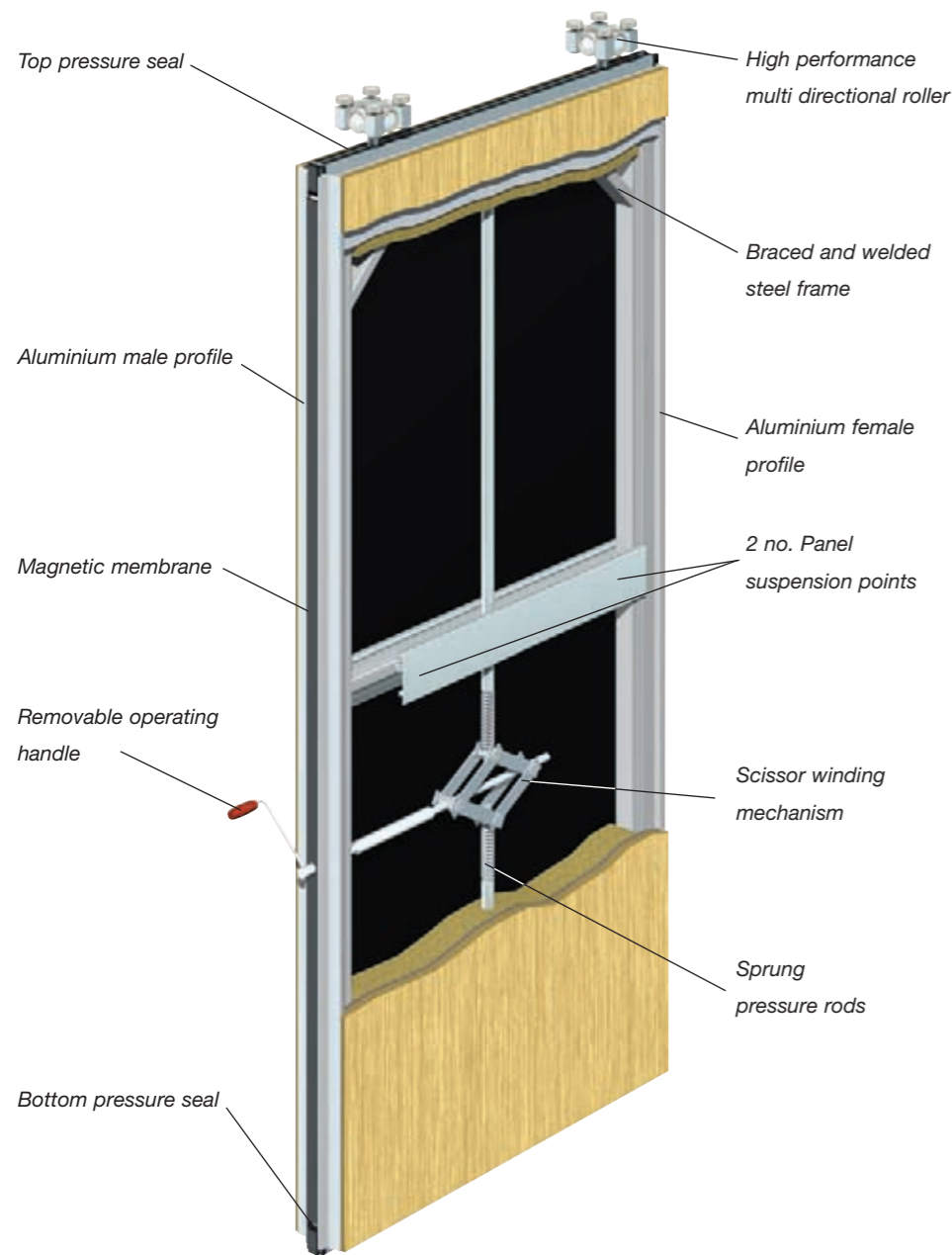


Monoplan-S

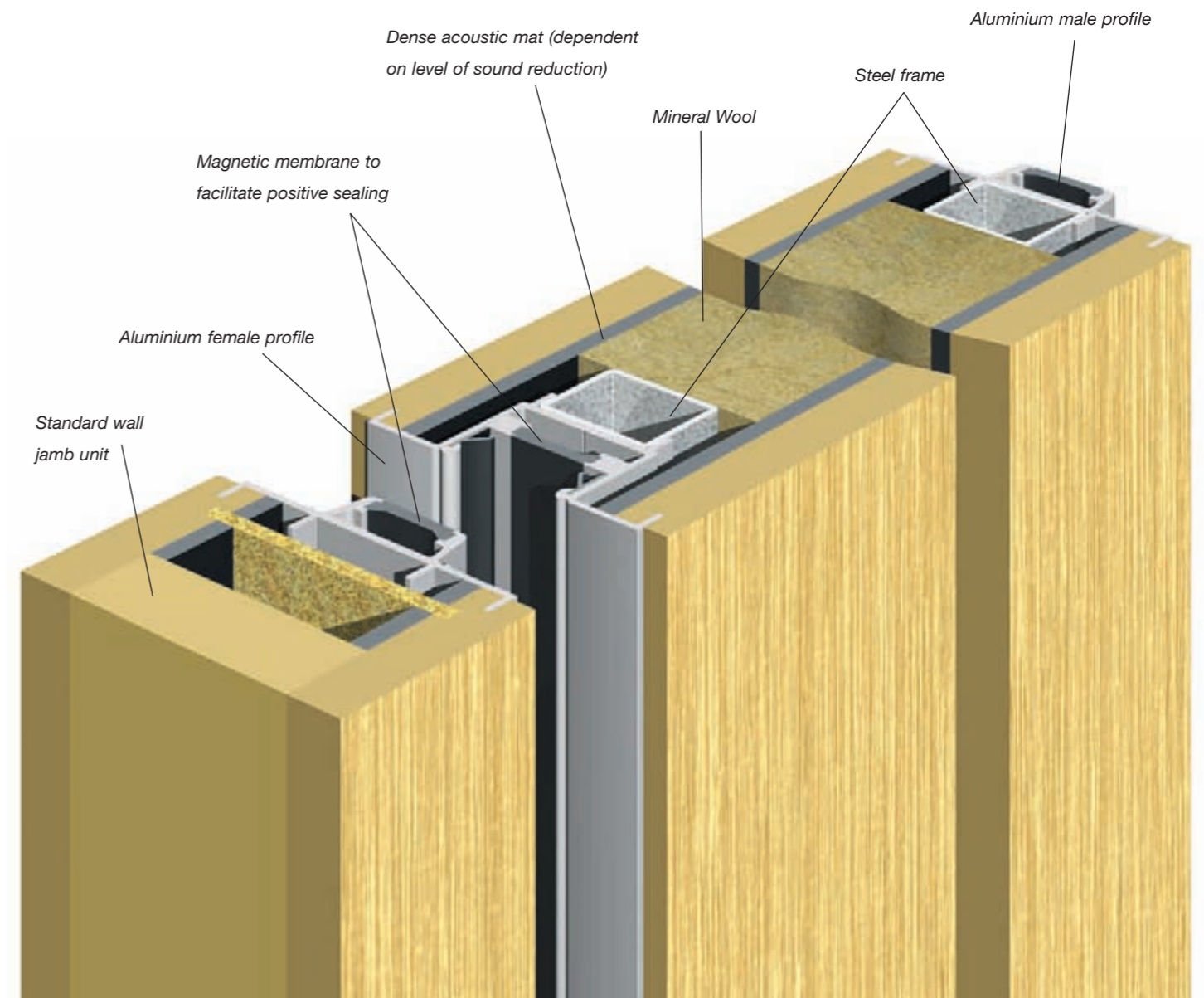


The Monoplan S is the most robust option in the Monoplan range. Panel faces are suspended from a steel frame with just 2 points of contact. The edges of panel faces are slotted into aluminium profiles. This method of cladding the steel frame allows the panel faces to be acoustically separated from each other and thereby minimises the transfer of sound waves through the system. Each panel has an extruded aluminium male profile to one vertical edge and a female profile to the other.

These profiles are fitted with magnetic membranes which ensure positive interlocking of the panels. Once the wall panels have been adjusted for height and level the roller stems are locked with a fail-safe mechanism to ensure that the panels will align perfectly every time the wall is set up. Pressure seals extend from the top and bottom of each panel exerting a closing pressure of 2kn providing panel stability and excellent acoustic sealing.



- Features and benefits**
- Braced and welded steel frame
 - Magnetic male / female edge profiles with an attractive force of 70 N per metre
 - 2kn top and bottom seal pressure
 - Up to 56dB sound reduction
 - Choice of exposed or concealed edge profiles
 - 1 hour and 1/2 hour fire resistant options
 - Demountable panel faces can be changed with ease
 - Internal telescopic unit
 - Fail safe lock to roller stems
 - Semi-automatic option



Monoplan



Aberdeen
Exhibition Centre

Product Selector

Type	Acoustic (R'w)	Thickness (mm)	Weight (kg/m ²)	Max Panel Width (mm)	Max Panel Height (mm)	Exposed/Concealed Edge Profiles
Aluminium framed						
85	37/42	87	36/43	1240	5000	EXP
100	39/46/50	97	34/45/53	1240	5000	EXP
110	37/41/45/ 50/53	116	38/42/46/ 54/57	1240	5000	CON
Steel framed						
S100K	40/42/44/ 46/49/53	100	43/44/48/ 50/53/57	1240	10,000	CON
S100U	40/42/44/ 46/49/53	104	43/44/48/ 50/53/57	1240	10,000	EXP
S130K	56	124	62	1240	10,000	CON
S130U	56	128	62	1240	10,000	EXP

Installation

Becker offer a full installation service complying with the requirements of 'FastTrack' contracts by carrying out a first fix of supports, tracks and baffles and a second fix of the finished panels.

We also offer a complete 'Turn Key' operation, carrying out the installation and all associated works (e.g. taking down and reinstating ceilings, providing primary steel supports etc.). To avoid disrupting a working environment the installation can be programmed to take place out of normal working hours, causing little or no inconvenience to the client.

Our team of fitters have many years of experience in the partition industry. We therefore offer a complete installation package including structural support, acoustic baffles, ceiling works and associated builder's works. Our prices include, off loading, haulage and the supply of all plant necessary to complete the installation.



Monoplan Type 100
finished in carpet

Finishes

Virtually any finish that can be applied to a conventional wall can be applied to the Monoplan System e.g. paint or wall covering. A large number of our installations are finished in veneer, melamine or laminate.

The Monoplan System can also incorporate skirtings, dados, presentation rails and display boards etc. Recent installations have included finishes such as chalk board, cork pin board, carpet and veneer with inlay.

Acoustics

The Monoplan System offers sound reduction levels from R'w 37 – 56dB. These levels are backed up by certificates awarded by a reputable independent body. They are not in-house tested. Full test results are available on request. (see Product Selector chart on page 12 for more details)

Fire Performance

Class 'O' or '1' Spread of Flame panels are available to your requirements. 'Monoplan Type 100 has 1 hour and 1/2 hour fire assessments.



Monoplan Type 100 with inset
display rails at Adidas offices



Monoplan Type 100 S
finished with skirting,
panelling, dado, and
wall covering.