



Healthcare doorsets



Leading UK manufacturer
With over 30 years experience

FD30

FD60

FD90

FD120

FD30/60 X-Ray

FD 30/60 Acoustic doors

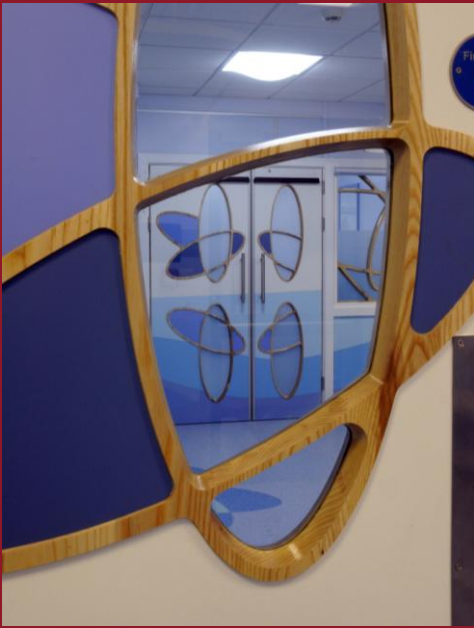
FD30/60 Yeoman Shield PVC clad

BM Trada Q-mark certification

Part of the Noberne portfolio



www.nobernedoors.co.uk



NOBERNE DOORSETS OFFER

- Full BS / EN acoustic test evidence
- Full BS / EN fire test evidence
- BM Trada Q mark doorsets
- Antibacterial Lacquer as standard
- Factory hung door sets HTM 58 compliant
- Full Noberne construction for secure fixings
- FSC chain of custody
- RIBA NBS plus approved
- FD30 FD60 FD90 FD120 & X-ray fire doorsets
- Bespoke manufacturing service



The Need for Performance Doorsets

HTM 58 Guide lines call for the use of certificated door sets

The challenge that architects, manufacturers and contractors face in meeting the requirements, is finding an effective fire barrier whilst ensuring safety and value for money to their clients. Noberne are able to offer a full range of timber doorsets that have been tested for both fire and acoustic performance, with prime test evidence. Backed with BM Trada Q-mark 3rd party accreditation. Offered with FSC chain of custody meeting 2 prerequisites of central government procurement.

Extended Performance Doorsets

NFR – FD120 Doors Sets HTM58 Compliant with Antibacterial Finish

By offering door sets that utilize full fire test evidence we are able to offer solutions to suit this harsh environment within the healthcare sector. Doors can be offered in painted, laminate or veneer finish (with standard antibacterial lacquer) or PVC wrapped (Yeoman Shield). With over 30 years of experience within this sector we have supplied doorsets to most UK NHS trusts. By offering NFR, FD30, FD60, FD90, FD120, X-ray and security doors Noberne are confident that we will be able to provide a solution. For ease of specification all of our products are approved under the RIBA NBS Plus scheme.

Primary Test Evidence Is Key

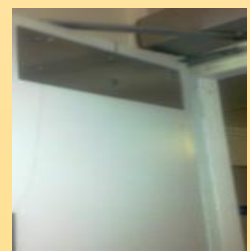
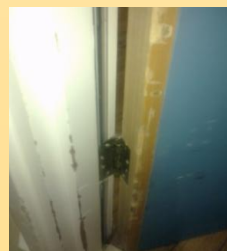
Why would you buy a product that a manufacturer had not tested?

If your supplier can't show you prime test evidence (they have designed, tested and made the door themselves) then how do you know that it will work? With CE Marking coming into legislation in 2013 certification will become more apparent, our view at Noberne is it has not been tested then we will not offer it to market, as how do you know it will work?

Why Compromise On Quality

We do not compromise on door core construction?

We see many door core failures on site when GDC (chipboard) cores are inappropriately used which don't well cope with the applications of the healthcare sector. Doors split from floor springs and closures, hinges drop, impact damage are all problems faced on site. This means a shorter life span for the doors and ongoing replacements. Photos of some issues are shown below:



HOSPITAL APPLICATIONS

Due to the horizontal evacuation strategies within the NHS best practice guide the need for higher rated performance doorsets is often key. Noberne can offer doorsets from NFR – FD120 all with primary test evidence so offering a true one stop shop for all doors required from the cleaners cupboard to a secure isolation door.

CUSTOM SOLUTIONS

The unique construction of Noberne doors offers strength, stability and flexibility in construction to provide solutions for the complexity of locks and anti ligature hinges and pivot mechanisms without the compromising stability allowing ease of specification.



Customer solutions

Noberne in addition to supplying doorsets directly, support other door manufacturers within our industry that do not offer higher fire rated, acoustic and x-ray doorsets. This is offered as an OEM solution to allow fabricators to offer tested products, which are outside the scope of budget cores used both on size (FD30/60) and fire rating (FD90/120).

Test evidence and 3rd party accreditation

All Noberne series doors come with primary fire test evidence with BM TRADA Q-Mark third party certification.

Series 2 – 30 minute fire rated doors – 38mm thick

The Series 2 fire rated door is manufactured using a timber perimeter framed high density flaxboard core. Due to the fact that this fire door is only 38mm thick, many architects and specifiers find it the ideal door for upgrading work.

Series 3 – 30 minute fire rated doors

The Series 3 fire rated door is derived from the first doors manufactured by Noberne, upgraded and improved over the years. A timber perimeter framed high density flaxboard core offers a strong and sturdy door very popular for use wherever doors of better than average strength and durability are required. Available as Yeoman Shield PVC clad doorsets. This product has achieved up to Rw34dB acoustic rating in acoustic tests.

Series 4 – 60 minute fire rated doors – 46mm thick

The Series 4 fire rated doors are 46mm thick and were introduced following requests from architects and specifiers for a one hour fire resisting door less than the 54mm thickness normally available. It has proved a very popular fire door in the fields of upgrading and refurbishing where it has enabled costs to be contained or even reduced.

CASE STUDY PHOTOGRAPHS



Series 5 – 60 minute fire rated doors

The Series 5 fire rated door is a strong and sturdy door with a timber perimeter framed high density flaxboard core very popular for use wherever doors of better than average strength and durability are required. An extremely well designed and constructed door, it has obtained exceptionally good results under tests and is recommended for use in areas of high wear and tear. Available as Yeoman Shield PVC clad doorsets. This product has achieved up to Rw36dB acoustic rating in acoustic tests.

Series 6 – 90 minute fire rated doorsets

The Series 6 fire rated doorset is a timber based construction similar to the other Series fire doors we manufacture offering greater strength and durability than the alternative mineral core products on the market. Available as singles and pairs with vision panels up to 0.30m².

Series 7 – 120 minute fire rated doorsets

The Series 7 fire rated doorset is a timber based construction similar to the other Series fire doors we manufacture offering greater strength and durability than the alternative mineral core products on the market. Available as singles and pairs with vision panels up to 0.30m².

Series 8 – X Ray 30 minute fire rated & NFR doors

The Series 8 lead lined X ray doorset is to our own specialist design with the door and frame incorporating a lead insert from Code 3 (1.32mm) to Code 7 (3.15mm). Available as singles and pairs including vision panels up to 0.32m². This product has achieved up to Rw35dB acoustic rating as flush single action single leaf doorsets in acoustic tests.

Yeoman Shield – Door and Frame Protection FD30 & FD60

Door and frame protection is often a requirement in a modern hospital due to the use of more trolleys and tugs, increasing the potential for damage. The increased life span of a protected doorset often more than covers the initial cost investment. Yeoman Shield products can also be retrofitted to existing doors offering a suited finish and ability to match wall and face protection products used in the building.

We have fire tested both the FD30 & FD60 versions of clad doorsets, allowing us to offer fully certificated solutions with primary test evidence for this product.



Noberne Doors Ltd
Lupton Street
Hunslet, Leeds
LS10 2QP

Tele: 0113 277 8577 Fax: 0113 277 2049 Email: sales@nobernedoors.co.uk Web: www.nobernedoors.co.uk