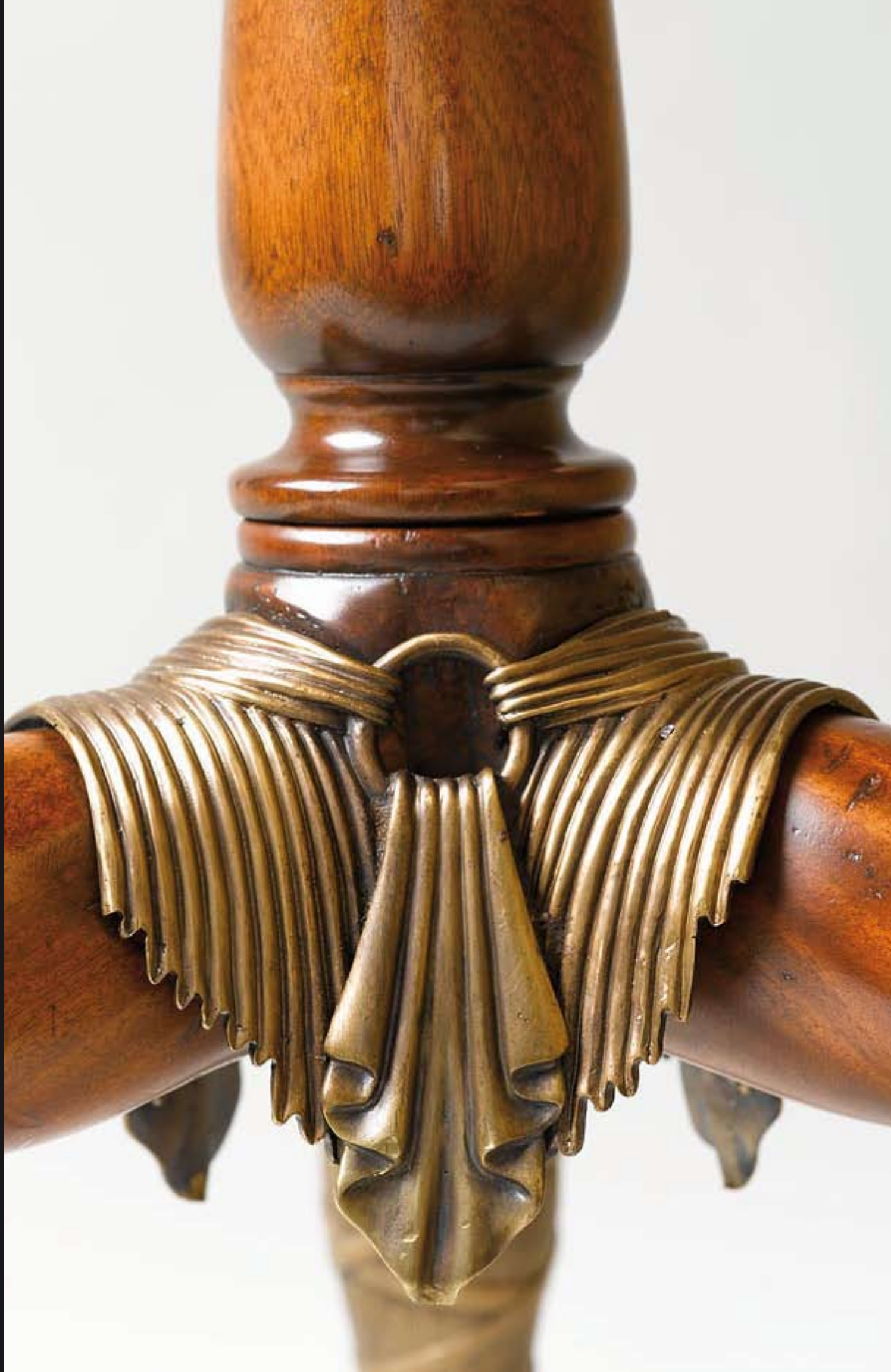


# repro:lifica

VOLUME I





# rep·li·ca

IMPORTANT FURNITURE  
BY  
HAND

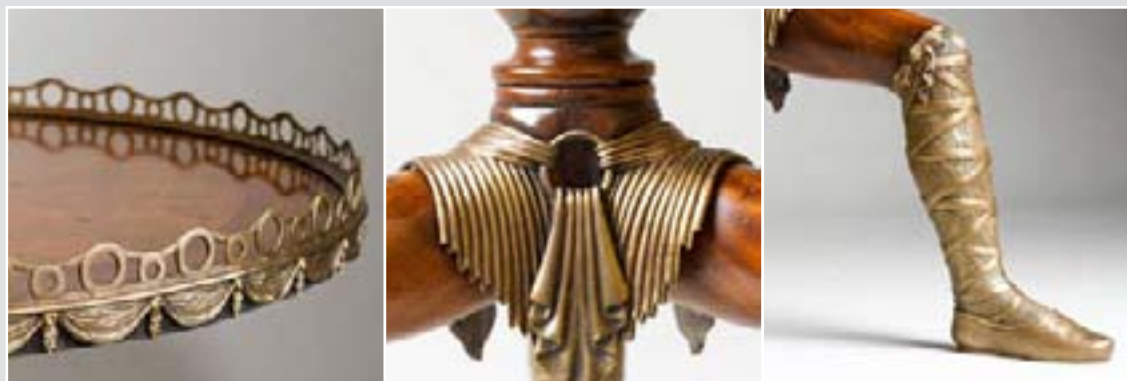


A unique  
and important collection  
of fine furniture.

## Curious Isle of Man Tripod

A most remarkable and rare pollard burl and mahogany 'Manx' tripod table, the circular top with a fine swag cast brass gallery supported on a turned column with unusual Ballerina legs with bent knees and finely cast brass swag mounts and strapped shoe feet.

The original Isle of Man circa 1850 from a Private Collection.





## Manx Whimsical Stool

An extremely unusual and finely hand carved and brass mounted stool, the studded rectangular brown leather upholstered seat on a naturalistically carved and parcel gilt 'x' frame base in the form of a headless warrior with classical armour, the legs with brass strapped boots, the arms raised and holding spiral turned batons as armrests.

The original 19th century from the Isle of Man.





## Imposing Medieval Armour

A hammered bronze suit of armour, with a crested helmet and visor, with chain mail beneath the suit, holding a broad sword and mounted on a weathered mahogany plinth base.

The original German, 16th century, sold at auction for over \$50,000.





## Bacchanalian Cellaret

A Neo-Classical mahogany cellaret or jardinière, oval with removable brass liner, the stop fluted frieze on finely brass cast Bacchanalian putti capitals, cabriole legs with leaf and hoof feet.

The original George III circa 1790, sold at auction in London for \$587,000





## The Linnell C Scroll Mirror

A fine hand carved giltwood wall mirror after John Linnell, the acanthus 'C' scroll framed marginal plates with a shell and cartouche crest enclosing a rectangular lattice astragal antiqued mirror plate.

The original George III circa 1770.  
From a Private London Collection.





## The Jupe Patent Dining Table

An extending dining room table. The swivel action top is formed of eight spin-out, triangular segments with additional leaves to expand the table top, which is raised on a substantial centre turned pillar and four turned columns on a concave platform base. The handmade internal capstan action and inset corners are of solid brass.

The original was patented by Robert Jupe (at the time an upholsterer), of 47 Welbeck Street, Cavendish Square in March 1835. Jupe and his then partner John Johnson manufactured these tables between 1835 and 1840. Jupe tables are extremely rare, in fact among the rarest of all furniture, and have fetched up to \$500,000 at auction.

Each table is accompanied by a baize lined leaf cabinet (see previous page)







## The Jupe Table Collection

### Circular

**RE99003** Pollard burl jupe dining table fitted with brass feet @ 84" diameter, with leaves storage.

60<sup>1</sup>/<sub>8</sub> W x 60<sup>1</sup>/<sub>8</sub> D x 30 H in. / 152 W x 152 D x 76 H cm  
 Extending to 84 W x 84 D x 30 H in. / 213 W x 213 D x 76 H cm

**RE99004** Mahogany jupe dining table fitted with brass feet @ 84" diameter, with leaves storage.

60<sup>1</sup>/<sub>8</sub> W x 60<sup>1</sup>/<sub>8</sub> D x 30 H in. / 152 W x 152 D x 76 H cm  
 Extending to 84 W x 84 D x 30 H in. / 213 W x 213 D x 76 H cm

**RE99005** Mahogany jupe dining table fitted with brass feet @ 90" diameter, with leaves storage.

67<sup>1</sup>/<sub>2</sub> W x 67<sup>1</sup>/<sub>2</sub> D x 30 H in. / 171 W x 171 D x 76 H cm  
 Extending to 90 W x 90 D x 30 H in. / 228 W x 228 D x 76 H cm

**RE99006** Pollard burl jupe dining table with brass feet @ 90" diameter, with leaves storage.

67<sup>1</sup>/<sub>2</sub> W x 67<sup>1</sup>/<sub>2</sub> D x 30 H in. / 171 W x 171 D x 76 H cm  
 Extending to 90 W x 90 D x 30 H in. / 228 W x 228 D x 76 H cm

### Oval

**RE99097** Mahogany jupe dining table with brass feet in oval with leaves storage.

88<sup>1</sup>/<sub>2</sub> W x 57<sup>1</sup>/<sub>2</sub> D x 30 H in. / 224 W x 145 D x 76 H cm  
 Extending to 107 W x 74<sup>1</sup>/<sub>4</sub> D x 30 H in. / 271 W x 188 D x 76 H cm

**RE99108** Pollard burl jupe dining table with brass feet in oval with leaves storage.

88<sup>1</sup>/<sub>2</sub> W x 57<sup>1</sup>/<sub>2</sub> D x 30 H in. / 224 W x 145 D x 76 H cm  
 Extending to 107 W x 74<sup>1</sup>/<sub>4</sub> D x 30 H in. / 271 W x 188 D x 76 H cm



## Lion Club Chair

A carved mahogany side chair in the manner of George Smith, the deep button antique brown leather upholstered over scroll back and seat, on naturalistically carved lion legs with accentuated knees, on paw feet. (far right)

The original Regency circa 1815.  
From a Private London Collection.

## Lion Club Chair

The same in fine cow hide (near right)





## George II Pride Chair

A fine carved mahogany and parcel gilt library side chair, the serpentine deep button antique brown leather upholstered back and seat on lion mask and leaf carved cabriole legs terminating in hairy paw and ball feet. (near right)

The original George II circa 1735 sold at auction for \$23,000.

## George II Pride Chair

The same in fine cow hide (far right).





## Georgian Throne Chair

An unusual carved mahogany and parcel gilt library side chair, the serpentine fine cow hide upholstered back and seat enclosed by lion head arms, on lion mask and leaf carved cabriole legs terminating in hairy paw and ball feet.

The original George II circa 1735 sold at auction for \$76,000.





## The Parisian Griffin Desk

A mahogany and lacquer writing table, the rectangular tan leather inset top with four crossbanded frieze drawers, on two finely cast Granite, resin and steel Griffin seated on plinth bases.

The original Restauration circa 1820. Designed by Gabriel Bouiller, Paris 1822. From the Gianni Versace Collection sold at auction in New York for \$75,000.





## Delicate Urn Stand

A mahogany tray top urn stand, the square undulating gallery top and apron fitted with a frieze candle slide, on flowerhead carved capital, turned and fluted tapering legs.

The original George III circa 1785 from a Private London Collection.





## Restful Regency Bench

A carved mahogany and parcel gilt hall bench, the reeded solid seat with lapette carved and scroll end supports, loose antique brown leather button upholstered seat cushion, on turned fluted and tapering legs.

The original Regency circa 1820 in the manner of George Bullock. Sold at auction in London for \$7,000.





## Exquisite Louis Seize Étagère

A two tier mahogany display table with drawer, the pierced brass galleried tier on leaf cast brass scroll supports trailing to the larger top with intricately cast brass swag and ribbon tied mounted frieze, on turned, fluted and tapering legs terminating in brass cappings and ball feet.

The original Louis XVI circa 1780, from a Private Continental Collection.





## Exquisite Pier Table

An important American serpentine mahogany pier or console table of excellent proportions, the inset dark grey granite top above a shaped and undulating apron on shell carved cabriole legs with claw and ball feet.

The original New York circa 1760 from the Cortelyou, a Dutch family who were amongst the earliest to emigrate to Long Island. Sold at auction in New York for \$1,696,000.

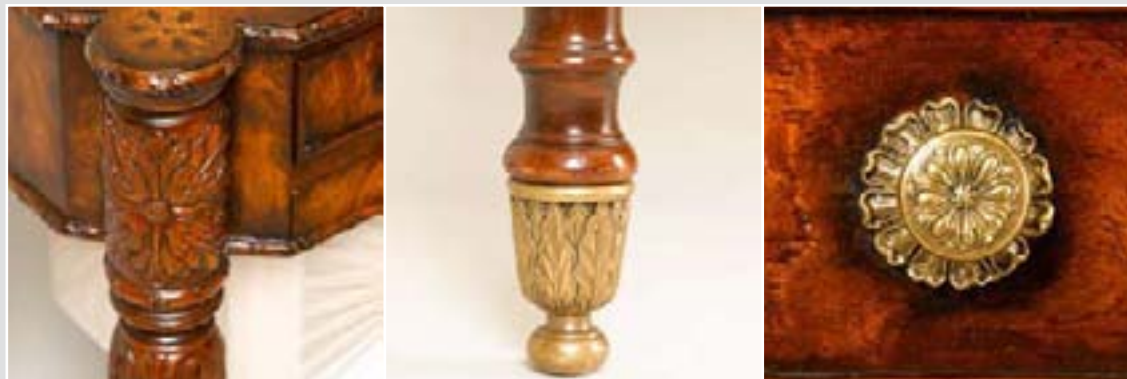




## Flowerhead Sewing Table

A finely carved American mahogany work table, the moulded edge top with protruding rounded corners and a frieze drawer, with a pleated silk covered box drawer below, the turned and fluted legs with leaf and floral carving terminating in cast brass cappings.

The original Salem, Massachusetts circa 1815, sold at auction for \$18,000.

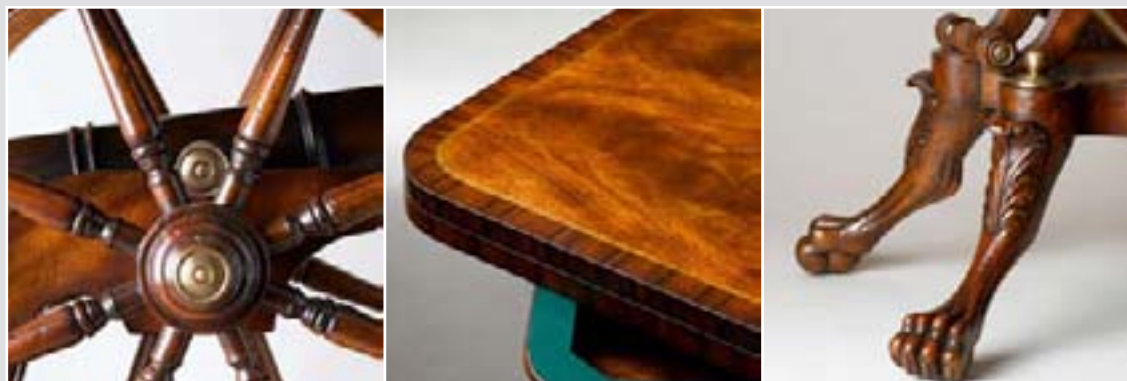




## The Independence Table

The famous American Federal carved mahogany, rosewood and brass strung games table, the rotating and fold over top inset with gilt tooled tan leather playing surface, supported on a wheeled cannon base with fine brass mounts, the plinth as a turret with cannonball finials, lions legs and paw feet.

The original made and signed by Duncan Phyfe of New York, a Scottish emigre cabinet maker who became one of the city's most celebrated artisans of his time. The original circa 1815 sold at auction \$84,000 in New York.



34 **RE52001** (left facing) 36 W x 36 D x 30 H in. / 91 W x 91 D x 76 H cm

**RE52002** (right facing) 36 W x 36 D x 30 H in. / 91 W x 91 D x 76 H cm



## Important Philadelphia Bureau

A mahogany bureau on stand of unusually large proportions, the sloping fall front supported on slide out lopers opening to reveal a fitted interior pigeon holes and shaped drawers with four leather spine faux book drawers, with one long and three further drawers below, shaped apron and shell carved cabriole legs terminating in claw and ball feet.

The original Philadelphia circa 1770 valued for auction at \$40,000.





## Classic Cocktails

A Classical Revival mahogany cocktail table, the square top with canted corners and four frieze drawers, supported by four bold square section tapering cabriole legs terminating in brass bases and lion paw feet, on a concave undertier raised on disc feet.

The original from the Gianni Versace collection sold at auction in New York for \$19,200.





## Mythical Dolphin Console

A striking Neo-Classical ebonised and silvered console table, the finely brass moulded variegated marble top above a rosette frieze with a central drawer, the mirror back below flanked by two bold silvered stylised dolphins on a bowed breakfront plinth base with silvered carved moulding.

The original Swedish circa 1830 from the Gianni Versace Collection.





## The Sphinx Settee

A finely hand carved mahogany and parcel gilt settee, the arched rectangular back and seat upholstered in fine cow hide, the back framed by gilt carved bell-flowers, the arms with brass Sphinx uprights on flowerhead legs with lion paw feet.

The original Empire circa 1815 from the Gianni Versace Collection sold at auction in New York.





## The Canterbury Nest of Tables

An unusual nest of two pollard burl, mahogany banded and brass inlaid tables, the brass bound rectangular tops on turned double end supports, the smaller table with a book tray base.

The original set circa 1820 from a Private London Collection.

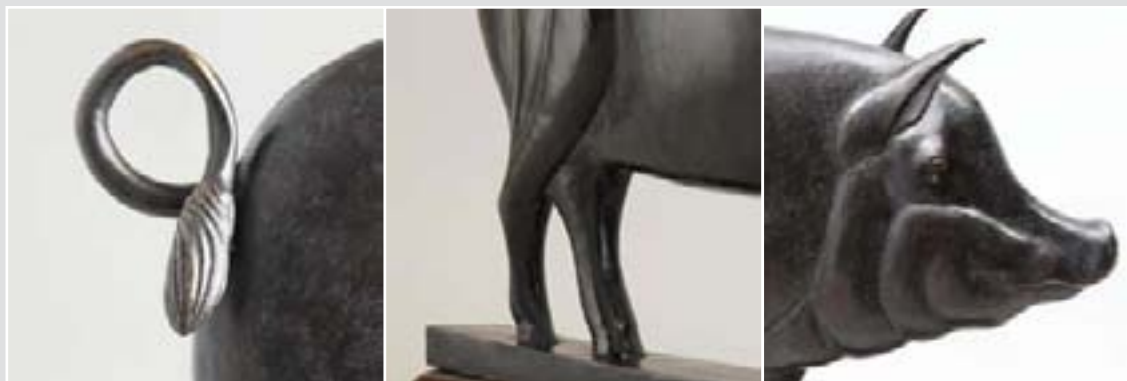




## Charming Farmyard Weather Vane

A hand-beaten verdigris brass bronze pig weather vane, now mounted on a brass and wooden base.

The original American, New England circa 1870 sold at auction in New York for \$90,000.

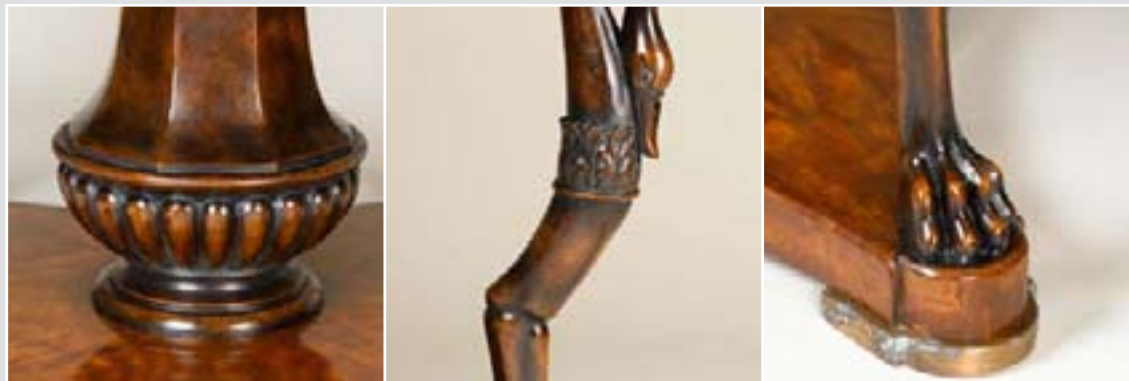




## Swan Neck Center Table

A mahogany and lacquer center table, the circular crossbanded top with frieze drawers and stellar brass handles, on a tapering octagonal column and with four swan head lions leg monopodiae with paw feet of granite resin and steel, the base a concave quatrefoil platform with brass feet.

The original Empire Guéridon circa 1815 from the Gianni Versace Collection sold at auction in New York for \$21,000.





## Roman Revival Cellaret

A pollard burl wine cooler applied with beautifully cast brass lion mask and laurel wreath mounts, the rectangular crossbanded lid with brass carrying handles, with recessed panel sides on brass plinth feet.

The original Regency in the manner of George Bullock circa 1820 valued for auction at \$45,000.





## The Tzar Desk

A fine Neo-Classical ormolu mounted pollard burl free standing writing desk, with delicately cast mounts on all four sides of Chimera and anthemion, with Medusa head handles, the frieze with central drawer flanked by two drawers to each side on lyre shaped open end supports, the platform bases raised on brass disc feet.

The original Russian Empire circa 1820 from the Gianni Versace Collection.





## Mirrored Parisian Chiffonier

A delightful amboyna open-sided chiffonier or side cabinet, the shaped breakfront three quarter brass swag cast gallery top above a central panelled cupboard door flanked by two mirror back shaped shelves with pierced brass galleries, raised on tapering spiral turned legs with brass mounts.

The original Paris, circa 1850.





## Gillows Ladies Desk

A fine kidney shaped mahogany and rosewood, brass inlaid ladies writing desk or dressing table, the brass bound top fitted with a central shaped frieze drawer, the undertier with a pierced brass swag cast gallery supported on four turned legs with fluted feet terminating in brass cappings and castors.

The original Victorian circa 1850 attributed to Gillows of London. From a Private Collection.





## Figured Bureau

A small burl walnut bureau on stand, the leather inset sloping fall front opening to reveal eight drawers and four pigeon holes with a drawer and pull out lopers as support, on cabriole legs with slipper feet.

The original George I circa 1715 from a Private London Collection.





## Bobbin Turned Joynt Stool

A faded walnut Joynt stool, solid rectangular seat on bobbin turned legs joined by stretchers.

The original Charles I circa 1630. Joynt stools were generally used as we would now use carver chairs. At a refectory table one would see two long benches on either side of the table and the Joynt stools would be used at the either ends.

From a Private London Collection.





## The Bachelor's Chest

A fine faded pollard burl Bachelor's dressing chest, the hinged fold over top supported by a pair of pull-out lopers, with two short and three long drawers applied with brass handles on bracket feet.

The original George I. London circa 1720 valued for auction at \$65,000.





## The General's Campaign Seat

A rare and intriguing carved mahogany and parcel gilt stool, the fine cow hide upholstered rectangular overstuffed seat supported on each side with crossed gilt handled and tipped sheathed sword supports centred by a rosette and joined by a turned stretcher.

The original English, circa 1860 from an undisclosed European Private Collection.





## Massachusetts Highboy

An American mahogany block front chest on chest, the broken swan neck cornice with three spiral turned and gilt pine cone finials, the upper section with four graduated drawers above which a fan shell carved drawer flanked by two short drawers all enclosed by fluted uprights, the lower section with four serpentine block front drawers with a shell apron below and on cabriole legs terminating in claw and ball feet.

The original last quarter 18th century, an important historical piece at the apex of the development of this type of furniture, attributable to Henry Rust. Sold at auction in New York for \$119,500.





## The Goddard 'Roundabout' Chair

The Nicholas Brown important American mahogany corner or so called 'Roundabout' arm chair, the arched top rail on turned supports interspersed by interlacing 'C' scroll pierced vase splats, the antique brown leather serpentine drop in seat on cabriole legs and terminating in slipper feet.

The original attributed to John Goddard of Newport, Rhode Island circa 1760. Sold at auction for \$1,584,000. The original chair had remained in the same family home in Providence for nearly 250 years before it was sold in 2005.

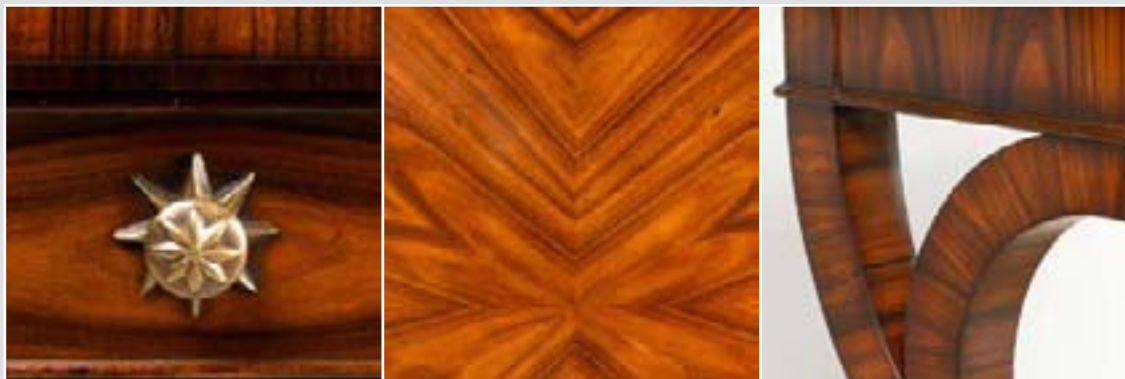




## Interlacing Scroll Writing Table

A fine Neo-Classical rosewood writing table, the rectangular top fitted with two frieze drawers standing on shaped square section loop end supports with similar shaped 'X' stretchers.

The original German circa 1830 from the Gianni Versace Collection.





## Graceful Chinoiserie Commode

A mahogany and lacquer chest of two drawers, the ends and drawer fronts hand decorated in Chinoiserie scenes on figured mahogany, with finely cast brass mouldings, ring drop handles and a faux marble painted top.

The original Louis XVI circa 1785 sold at auction in Paris for \$14,000.





## George II Rococo Fauteuil

A fine Rococo hand carved mahogany library arm chair in the manner of Matthias Lock, the serpentine antique brown leather deep button upholstered back and seat, with scroll arms, leaf and cartouche carved cabriole legs.

The original George II circa 1735 from a Private London Collection.

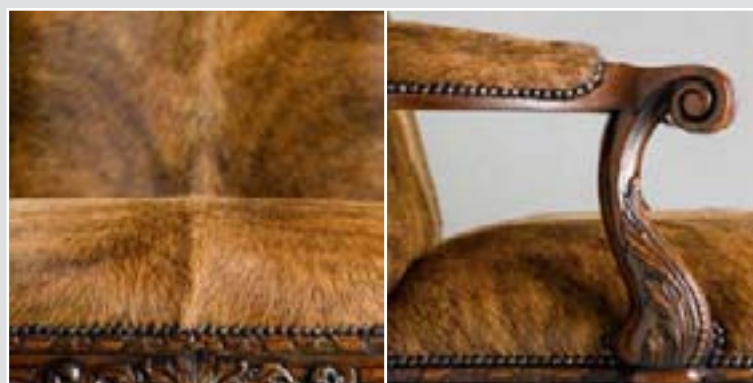




## The Vile & Cobb Acanthus Chair

A profusely hand carved mahogany library arm chair after the celebrated London cabinetmakers Vile and Cobb. The serpentine acanthus leaf carved top rail and the fine cow hide upholstered back and seat enclosed by padded scroll end arms on carved cabriole legs and hairy paw feet.

The original George II circa 1765.  
From a Private London Collection.





# A Magnificent Desk

A fine and important mahogany and rosewood cross banded Partners' pedestal desk of magnificent proportions, with gilt highlighting to the carved decoration, the moulded edge top with three inset tooled red leather writing surfaces, on each side above three frieze drawers and two oval panel cupboard doors each enclosing six drawers hand-lettered in gold. The doors flanked on either side by trailing husk carved pilasters, the sides and kneehole with panels as the doors, each pedestal on a plinth base. The 30 drawers mounted with finely cast brass rocaille handles.

The original George III circa 1773 was part of HSBC's Corporate Art Collection and was sold at auction for \$1,800,000.

Commissioned from Thomas Chippendale for John Martin Esq. of Ham Court, Gloucestershire. Chippendale was the son of a Worcestershire carver and established himself in business in Conduit Street in 1749 prior to moving to St Martin's Lane in 1752. He is regarded as the master of design and proportion.





## Chippendale Library Bookcase

An imposing mahogany, crossbanded and parcel gilt open library bookcase en suite with the Chippendale Partners desk in this collection. With a moulded cornice and adjustable shelves below, with touch lights to each section, flanked by trailing husk carved uprights, the base of three frieze drawers on two three drawer pedestals and plinth bases flanking a knee-hole.

(Chippendale Partners Desk RE71005)





## Sumptuous Sabre Leg Bergère

A mahogany scoop back library Bergère arm chair, the caned back and seat with a loose antique brown leather button cushion and shaped loose backrest, on sabre legs capped with roundels.

The original Regency circa 1815 sold at auction in London for \$10,000.





## Metamorphic Reading Table

A mahogany, brass inlaid and rosewood reading table, the rising crossbanded moulded edge top with inset removable brass book rest, the frieze with slides to each side and a frieze drawer with a shield shaped escutcheon and oval handles, on lobed and turned fluted tapering legs, terminating in brass cappings and castors.

The original George III circa 1800 sold at auction for \$38,720.





## Sinuuous Serpentine Chest

A mahogany serpentine chest of drawers, the canted protruding corners with finely brass mounted caryatid and bellflower shaped uprights, the two short and three long graduated drawers with detailed floral wreath cast drop handles and escutcheons, on a moulded base with bracket feet.

The original George III circa 1770 in the manner of John Linnell. From a Private London Collection.





## Cabriole Leg Stool

A superb carved mahogany and parcel gilt footstool, on acanthus leaf capped and gold leaf highlighted cabriole legs with lion paw feet, the seat upholstered in fine cow hide. (far right)

The original George II circa 1740 sold at auction for \$25,920

## Georgian Great Stool

A superb carved mahogany and parcel gilt Ottoman or 'Great' stool, on acanthus leaf capped and gold leaf highlighted cabriole legs with lion paw feet, the seat upholstered in fine cow hide. (near right)





## Exceptional Tripod Table

A mahogany circular tilt top tripod table, the moulded edge top with a finely turned brass gallery on a spiral turned baluster column with parcel gilt acanthus leaf carved cabriole legs terminating in claw and ball feet.

The original George II circa 1750 sold at auction for \$21,600.





## Smith & Hope Library Chair

A hand carved dark mahogany parcel gilt library open arm chair, the raised and scroll top rail carved with a plume and scrolls, the caned and loose antique brown leather button upholstered cushion seat and panel bar back above a ring turned and lotus leaf carved rail, the arm above winged leopard monopodiae supports with paw feet.

The original after George Smith and Thomas Hope circa 1815. George Smith published a 'Collection of Designs for Household Furniture and Interior Decoration', in 1808 and shared many aspects of furniture design with his contemporary Thomas Hope.

The original sold at auction in London for \$55,600.





## Elegant Regency Bar Back

A carved mahogany and parcel gilt arm chair in the manner of Thomas Hope, the over scrolled carved top rail and padded arms enclosing an antique brown leather button seat and padded bar back, the seat rail with gilt roundels and on four sabre legs.

The original Regency circa 1820 sold at auction in London for \$31,000.

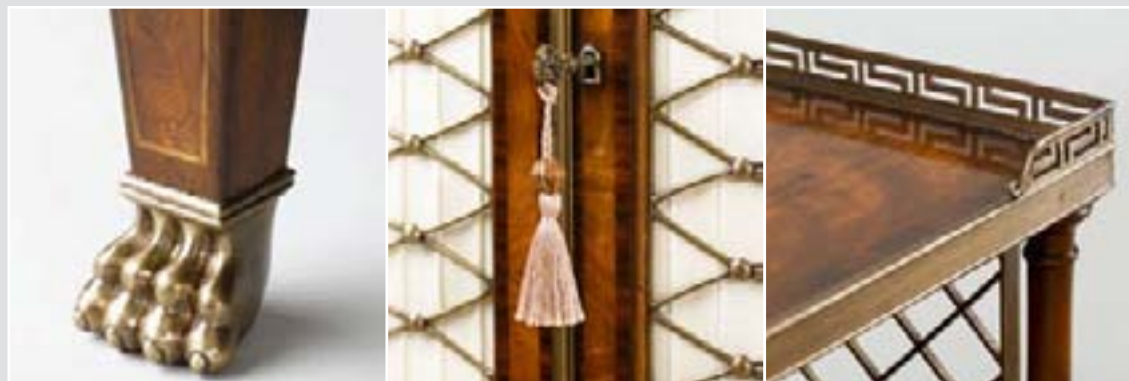




## Regency Brass Inlaid Chiffonier

A mahogany, rosewood crossbanded and brass inlaid chiffonier, the upper shelf structure with a fine three quarter Greek key pierced brass gallery with open brass grille and column supports, the cabinet section with two lozenge inlaid frieze drawers applied with lion mask handles, and silk backed elliptical grille panel doors, on square tapering legs with brass paw feet.

The original Regency circa 1815 sold at auction for \$19,500.





## Charming Cheval Dressing Mirror

A charming Italian Neo-Classical finely carved wood cheval mirror, partially gilded and ivory painted with a leaf hand carved frame flanked and surmounted by foliate scrolls enclosing a bevelled edge plate, on paw feet with easel chain supports.

The original circa 1780 valued for auction in London at \$9,000.





## Concave Side Cabinet

A fine mahogany and burl mahogany banded side cabinet, with three frieze drawers above corresponding oval panel and lozenge inlaid doors enclosing adjustable shelves, with concave sides, on turned legs with brass cappings.

The original George III circa 1800, sold at auction London for \$20,000.



100 **RE61003** 64 W x 16 D x 36<sup>1</sup>/<sub>4</sub> H in. / 162 W x 40 D x 92 H cm



## The Finely Carved Italian Console

A finely carved limed wood painted serpentine console table, the shaped bowfront mahogany and finely scrolling brass marquetry leaf inlaid top above a finely carved panelled frieze, on spiral turned, acanthus leaf capital and fluted turned legs joined by stretchers centred by a wreath moulded circular mahogany urn tier.

The original North Italian, circa 1770. From a Private European Collection.





## Hourglass Shield Back Chair

A weathered mahogany arm chair, the shield back and open scroll arms enclosing an antiqued upholstered seat on cabriole legs terminating in pad feet. (far right)

The original George I circa 1720.  
Sold at auction in London for \$18,900.

## Hourglass Shield Back Chair

The same in fine cow hide (near right)



104 **RE41003** (far right) 24½ W x 24¾ D x 38½ H in. / 62 W x 61 D x 97 H cm

**RE41004** (near right) 24½ W x 24¾ D x 38½ H in. / 62 W x 61 D x 97 H cm



## Regency Scoop Back

A Regency carved faded honey mahogany side chair, scoop back, fine cow hide upholstered seat, lions legs paw feet and accentuated knees.

The original 1820, from a Private London Collection.





## Neapolitan Satyrical Ewer

A fine Neo-Classical verdigris baluster ewer, the serpentine spout and loop scroll handle with a Satyr mask base, the baluster body with fluted decoration mounted on a stepped square pedestal applied with brass Medusa head mounts.

The original Italian circa 1830. From a Private New York Collection.

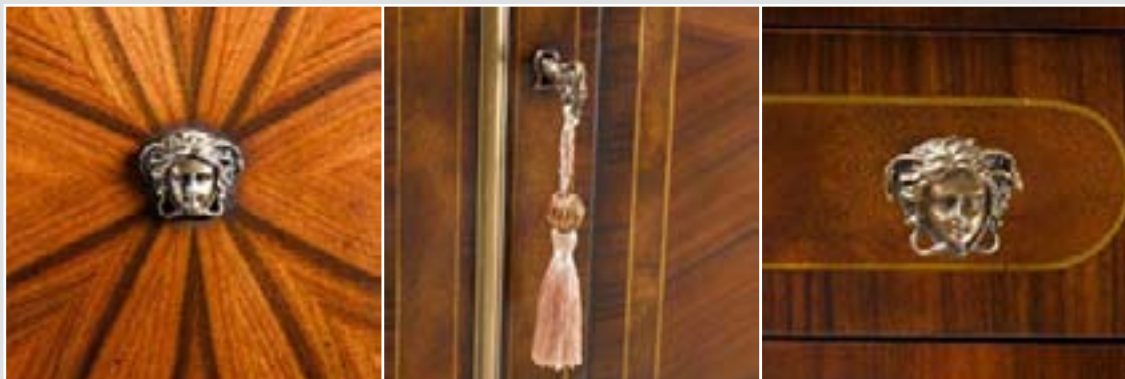




## Highly Strung Cabinet

An exceptional rosewood, inlaid and brass strung side cabinet, the rectangular top above two frieze drawers with ovoid panel inlay, Medusa head brass handles and mounts to the radiating rosewood and banded cupboard doors, on bracket feet.

The original Regency circa 1810 from a Private English Collection.

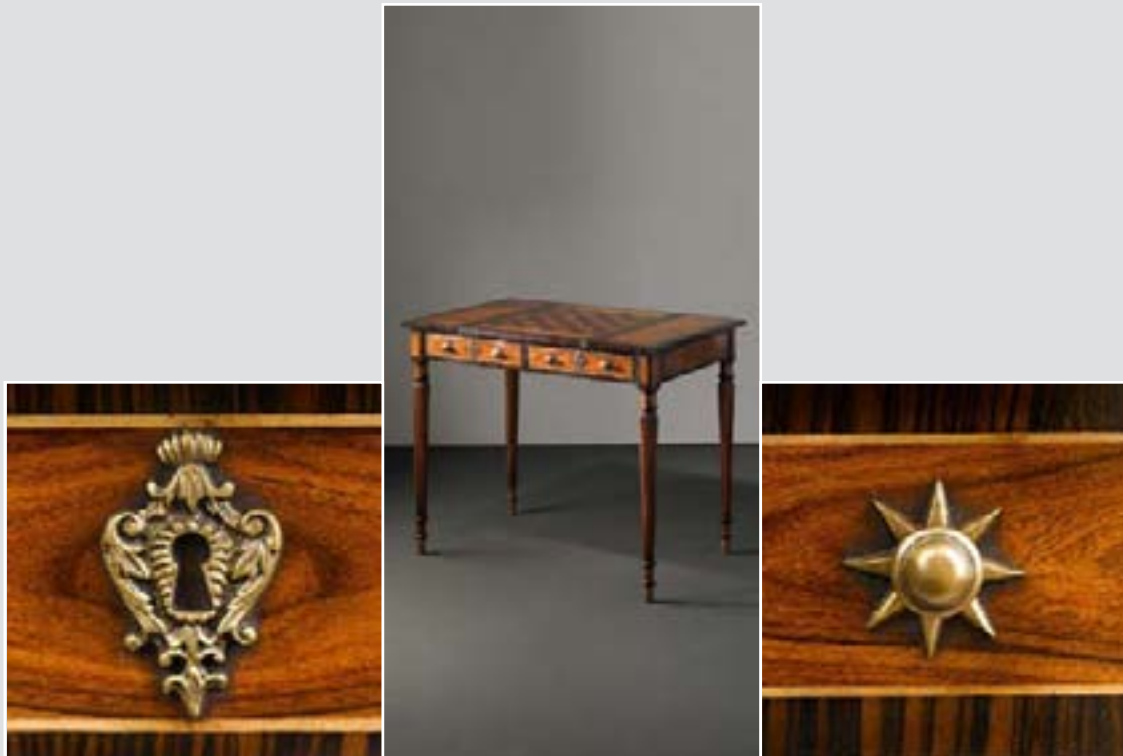




## Elegant Gillows Games Table

A rosewood, macassar ebony crossbanded and brass inlaid games table, the slide out reversible chess inlaid center section revealing a backgammon board, the frieze with two dummy drawers and brass handles, on fluted tapering legs terminating in brass cappings.

The original Regency circa 1810, Gillows of London. From a Private New York Collection.





## Parisian Griffin Cocktail

A mahogany and glass inset circular cocktail table, three lacquer Granite resin and steel Griffin supports, trefoil concave platform base and brass plinth feet.

The original classic Restauration circa 1820 designed by Gabriel Bouiller, Paris 1822.

(En suite with the writing desk RE71007)





## Occasional Rococo

A carved mahogany stool, the circular antique brown leather button upholstered seat on 'C' scroll and leaf carved cabriole legs.

The original George III circa 1765 sold at auction for \$6,000.

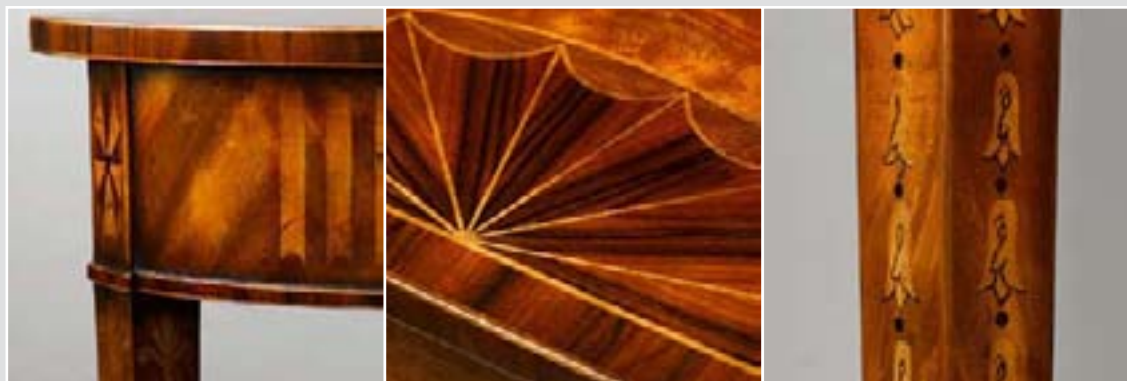




## Irish Bowfront Console

A mahogany, rosewood and parquetry inlaid demi lune console table, fan inlaid top, faux fluted frieze, inlaid square tapering legs.

The original George III, Dublin.  
Attributed to William Moore circa 1780.  
From an Irish Private Collection.





## Classic Queen Anne Chest

A good mahogany, crossbanded and boxwood strung break-bowfront chest of drawers, with a shaped brushing slide, three short and three long drawers flanked by reeded uprights on bracket feet.

The original Queen Anne circa 1705 London.



120 **RE60011** 32 W x 18 D x 34 H in. / 81 W x 45 D x 86 H cm



## Brass Strung Urn Stand

A mahogany and brass inlaid tray top urn stand, the square top with an undulating gallery and fitted with a slide, on square tapering legs terminating in spade feet united by a delicately ring turned 'X' shaped stretcher.

The original George III, circa 1800 from Kenwood House, London sold at auction for \$7,560.





## The Goddard Serpentine

An American serpentine mahogany silver table, the dished moulded edge top above a plain undulating frieze on four palmette carved cabriole legs with claw and ball feet.

The John Goddard (1723-1785) table was recently sold at auction for \$7,900,000 and is considered to be a highly important masterpiece of 18th century American furniture. Goddard made the original for Nicholas Brown of Rhode Island as part of a wedding furniture order. The cost then was £82 (Rhode Island currency). When sold at auction the table was still owned by a direct descendant of Nicholas Brown's. A similar table made at the same time can be found at the Winterthur Museum in Delaware, USA. The table is distinguished by the fact that it displays a mastery of serpentine design and formidable carving skills, the latter of which are evident in the symmetrical palmettes and leaf-carved knees, in the claw feet and open talons.





## Sunburst Lowboy

A faded burl walnut and line strung low side table, the moulded edge crossbanded top with two frieze drawers below centred by a semi circular sunburst inlaid drawer recessed with an arch and sans traverse with undulating apron, on cabriole legs with slipper and disc feet.

The original George I circa 1720 sold at auction in London for \$47,250.

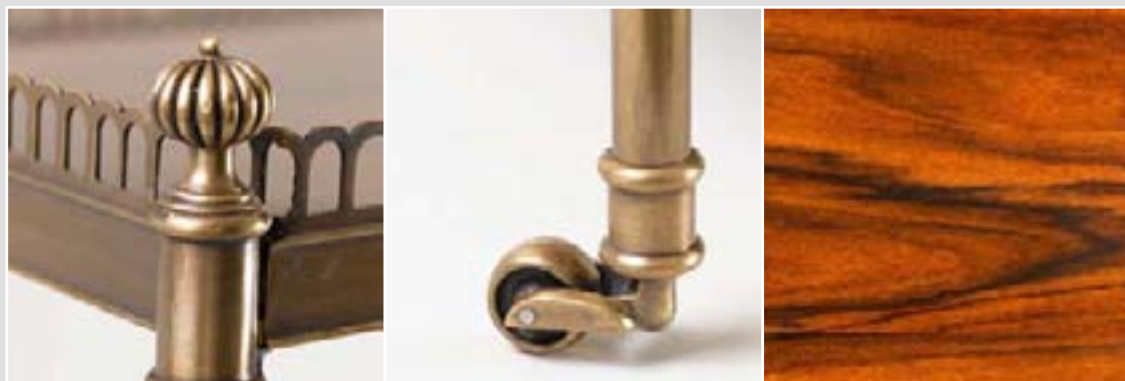




## Dignified Rosewood Étagère

A rosewood and elegantly turned cast brass three tier Étagère, the rectangular pierced repeating arch brass gallery top and brass bound lower tiers between brass columns terminating in brass castors.

The original by Mallets of London sold at auction for \$6000.





## Sphinx Monopodiae Center Table

An Egyptian Revival mahogany and lacquer center table, the circular brass bound top with wreath handle frieze drawers on three finely cast granite and resin Sphinx monopodiae with paw feet, on a trefoil concave platform base.

The original Empire circa 1810 from the Gianni Versace Collection valued at \$18,000.

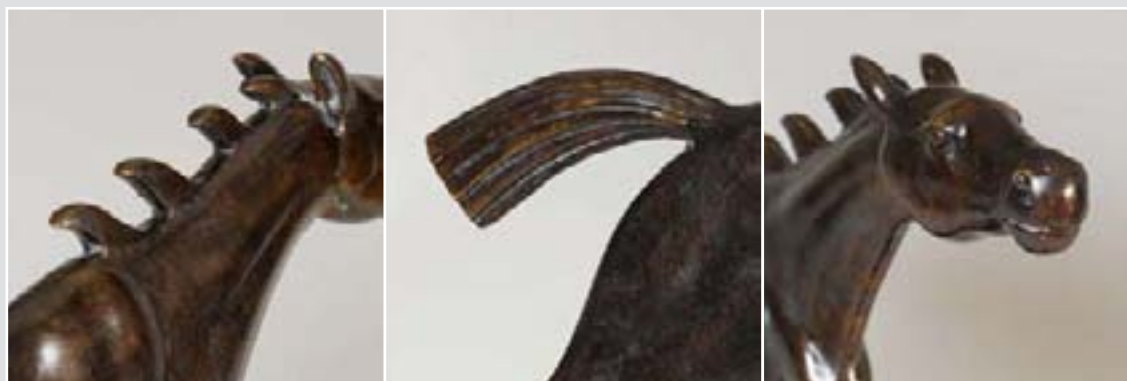




## Galloping Weather Vane

A hand-beaten hollow verdigris brass so called 'Hindoo' weather vane, in the shape of a running horse now mounted on an brass base.

The original American, New England, circa 1880 sold at auction in New York for \$15,600.

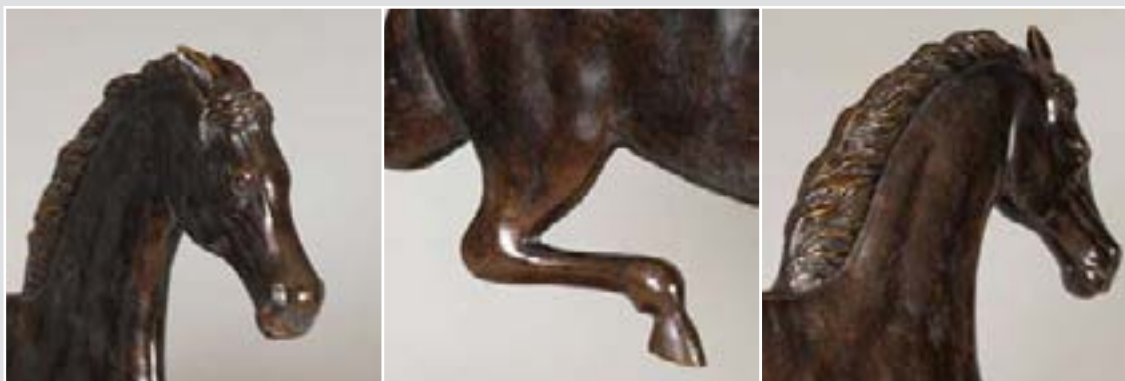




## Cantering Weather Vane

A hand-beaten verdigris brass so called 'Black Hawk' weather vane, in the shape of a cantering horse.

The original Maine, New England circa 1870 and attributable to Cushing and White. Sold at auction in New York for \$15,600.





## The Zephyr Console

A fine, rare and delightful mahogany console table, the variegated brass inlaid granite top above a frieze drawer with Medusa mount flanked by anthemion, the mirror back below on a breakfront plinth base, supported by winged Zephyr and brass roundel capital turned and tapering legs.

The original Empire by Jacob Freres, Paris circa 1815. Valued for auction at \$30,000.





## The Weisweiler Guéridon

A mahogany Guéridon after A. Weisweiler, the circular brass bound and marquetry hand brass inlaid top and galleried undertier supported by scroll capital brass legs with rope loop handles on paw feet joined by a floral trefoil pierced stretcher.

The original Directoire circa 1790.  
From a Private Parisian Collection.

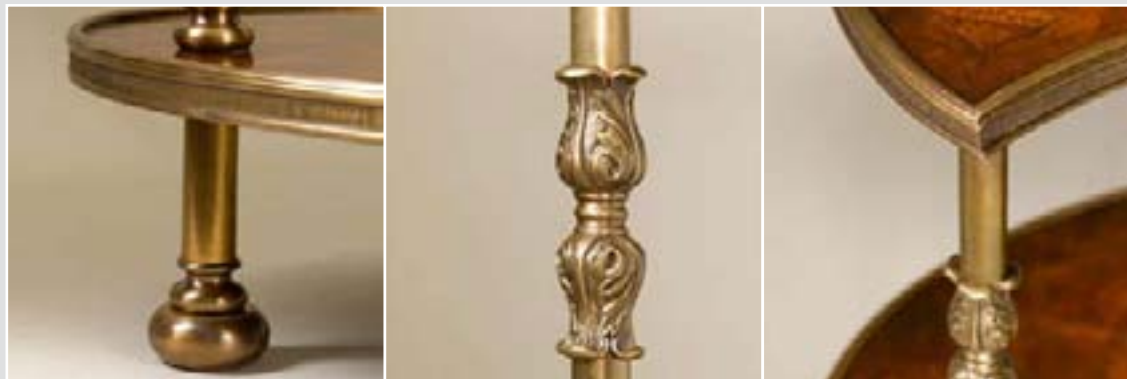




## Finely Shaped Whatnot

A charming three tier mahogany and burl banded étagère, the brass bound kidney shaped upper tiers with an oval undertier supported between finely turned and cast brass columns.

The original English circa 1850 from a Private London Collection.





## A Chippendale Desk

A fine mahogany partners' desk, the rectangular top inset with a gilt tooled tan leather writing surface, the frieze with three drawers to each side and three drawers below to each pedestal opposed by cupboard doors, with panelled sides and on plinth bases, all drawers with finely cast brass mounts.

The original George III undoubtedly by Thomas Chippendale, London circa 1765, valued for auction at \$120,000.





## The Chippendale Hexagon Table

A fine mahogany and parcel gilt tripod table in the manner of Thomas Chippendale, the figured hexagonal top on a turned and fluted column with carved acanthus leaf and scroll legs.

The original George III circa 1780 valued for auction in New York at \$14,000.

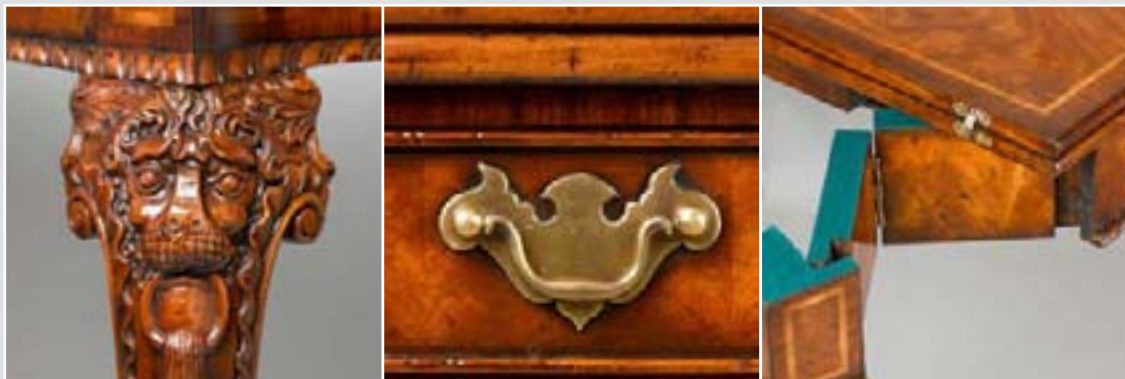




## Gadrooned Tea Table

A fine carved mahogany tea table, the serpentine gadrooned edge fold over top fitted with a central frieze on lion mask carved cabriole legs terminating in claw and ball feet.

The original George II circa 1730.  
From a private New York Collection.





## A Demi Lune Table

A mahogany demi lune console of small proportions, fitted with two central frieze drawers applied with brass handles and locks, on square tapering legs terminating in brass feet joined by an undertier.

The original George III circa 1800 sold at auction for \$6,650.





## Grecian Revival Brass Inlaid Writing Table

A mahogany writing table after Molitor, the rectangular top with engraved brass moulding and brass line inlay above a frieze fitted with two drawers, anthemion mounts above the carved naturalistic lion legs with paw feet accentuated at the knees, all on a concave mahogany and brass inlaid plinth base.

The original circa 1820 was formerly used by Gianni Versace in the Salon at Casa Casuarinas, Miami. Sold at auction for \$54,000.





## Ingenious 'Table en Cabaret'

A delightful mahogany tripod table, the circular top with a finely cast brass swag and pierced gallery adjustable through a brass telescopic mechanism, supported on a tapered column and square section downswept legs.

The original 19th century French. Inspired by a similar item sold at auction in Paris for \$24,600.





## Serpentine Reeded Chest

A rare Neo-Classical mahogany serpentine chest of drawers, the top with protruding corners with gilt carved and cluster reed columns enclosing four graduated drawers with brass drop handles, on shaped bracket feet.

The original George III circa 1770 sold at auction London for \$108,000.





## Neo-Classical Torchère

A mahogany and parcel gilt torchère, the circular top on three gilt capital fluted columns centred by upswept stretchers joined by a turned fluted and urn finial on acorn feet.

The original Italian circa 1785 from the Gianni Versace Collection sold at auction in New York for \$10,400.





## Rococo Work Table

A carved mahogany and parcel gilt box on stand, the gilt carved moulded top above the fall front applied with a finely cast brass Rocaille escutcheon and handle opening to reveal six drawers, supported on a fluted and acanthus leaf carved column with tripod leaf on shell carved cabriole legs.

The original George II circa 1740 sold at auction in New York for \$26,450.





## Delightful Regency Occasions

A mahogany and brass lozenge inlaid occasional table, the canted rectangular top fitted with a frieze drawer and eight lion mask mounts, supported on a spiral turned column with four brass 'C' scroll supports, the downswept legs and finial plinth on peg feet.

The original Regency circa 1815 sold at auction London for \$17,300.





## Intricately Carved Torchère

A finely hand carved mahogany and silver leaf torchère, a wreath carved circular top with a lattice carved and flowerhead frieze, on three bell flower carved tapering supports terminating in lion paw feet, joined by a trefoil guilloche carved undertier and on a canted triangular pedestal base.

The original Louis XVI circa 1790  
sold at auction for \$43,000.





## Exquisite Regency Footstool

A finely carved mahogany and parcel gilt footstool, grey silk upholstered arched seat, acanthus leaf bracketed lions paw feet below the panelled and rosette carved frieze.

The original Regency London circa 1825 valued for auction at \$5,000.





## Regency Library Chair

A carved mahogany and parcel gilt library arm chair, the antique brown leather button back and seat enclosed by padded arms with acanthus carved uprights, on anthemion capital turned tapering and carved legs.

The original Regency circa 1815 sold at auction in London for \$50,000.

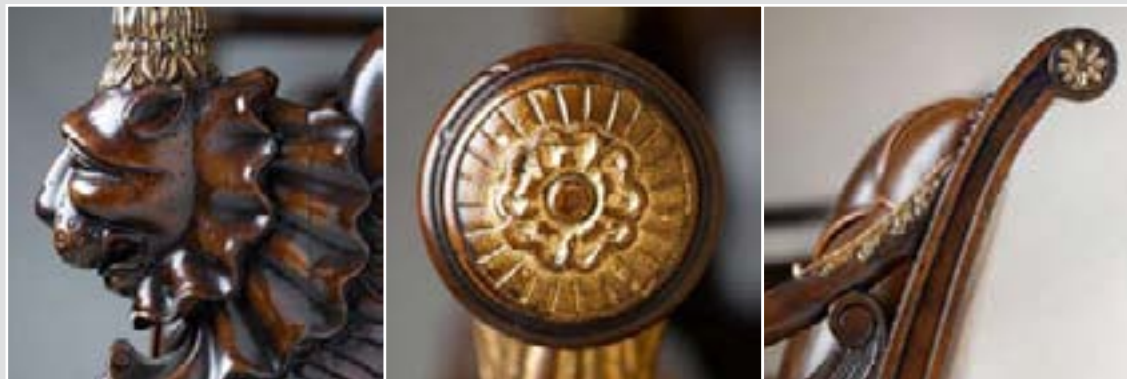




## Classical Revival Chesterfield

A very finely carved mahogany framed and parcel gilt settee, the over scroll back and seat deep button upholstered in antique brown leather flanked by carved finial terminus arms and winged leopard and paw foot monopodiae.

The original French circa 1815 sold from the Gianni Versace Collection in New York.







**RE10033**  
**Pg131**

29 W x 6 D x 19<sup>3</sup>/<sub>4</sub> H in.  
73 W x 15 D x 50 H cm



**RE10034**  
**Pg133**

32<sup>1</sup>/<sub>2</sub> W x 8 D x 24<sup>1</sup>/<sub>2</sub> H in.  
82 W x 20 D x 62 H cm



**RE10035**  
**Pg45**

29<sup>3</sup>/<sub>4</sub> W x 3<sup>1</sup>/<sub>2</sub> D x 17 H in.  
75 W x 8 D x 43 H cm



**RE10067**  
**Pg5**

29 W x 17 D x 80 H in.  
73 W x 43 D x 203 H cm



**RE11001**  
**Pg7**

24 W x 28 D x 27 H in.  
60 W x 45 D x 68 H cm



**RE15001**  
**Pg107**

6 W x 8<sup>1</sup>/<sub>2</sub> D x 25<sup>1</sup>/<sub>4</sub> H in.  
15 W x 21 D x 64 H cm



**RE17001**  
**Pg161**

14<sup>3</sup>/<sub>4</sub> W x 13 D x 48 H in.  
37 W x 33 D x 121 H cm



**RE17003**  
**Pg155**

16 W x 16 D x 40 H in.  
40 W x 40 D x 101 H cm



**RE31002**  
**Pg97**

33 W x 26<sup>3</sup>/<sub>4</sub> D x 70<sup>1</sup>/<sub>2</sub> H in.  
83 W x 67 D x 179 H cm



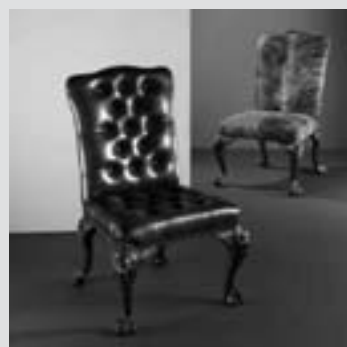
**RE31004**  
**Pg9**

40 W x 2 D x 70 H in.  
101 W x 5 D x 177 H cm



**RE40001** (left)  
**Pg15**

22<sup>1</sup>/<sub>2</sub> W x 28<sup>1</sup>/<sub>2</sub> D x 40<sup>1</sup>/<sub>2</sub> H in.  
57 W x 72 D x 102 H cm



**RE40002** (right)  
**Pg17**

26<sup>3</sup>/<sub>4</sub> W x 27<sup>7</sup>/<sub>8</sub> D x 42 H in.  
67 H x 70 D x 106 H cm



**RE40005**  
**Pg105**

25 W x 27 D x 36 H in.  
63 W x 68 D x 91 H cm



**RE41001**  
**Pg19**

31<sup>1</sup>/<sub>4</sub> W x 33<sup>1</sup>/<sub>2</sub> D x 44<sup>3</sup>/<sub>4</sub> H in.  
79 W x 85 D x 113 H cm



**RE41002**  
**Pg165**

26<sup>3</sup>/<sub>4</sub> W x 29<sup>1</sup>/<sub>2</sub> D x 36<sup>5</sup>/<sub>8</sub> H in.  
67 W x 74 D x 93 H cm

**RE40006** (right)

**RE40007** (left)  
26<sup>1</sup>/<sub>4</sub> W x 28<sup>3</sup>/<sub>4</sub> D x 41<sup>3</sup>/<sub>4</sub> H in.  
66 W x 73 D x 106 H cm



**RE41003** (right)  
**Pg103**

24½ W × 24¾ D × 38½ H in.  
62 W × 61 D × 97 H cm

**RE41004** (left)



**RE41005**  
**Pg91**

26 W × 27½ D × 36¼ H in.  
66 W × 69 D × 92 H cm



**RE41006**  
**Pg67**

25½ W × 24½ D × 31 H in.  
64 W × 62 D × 78 H cm



**RE41007**  
**Pg93**

25 W × 27¾ D × 38 H in.  
63 W × 70 D × 96 H cm



**RE41010**  
**Pg75**

30½ W × 30 D × 40½ H in.  
77 W × 76 D × 102 H cm



**RE41012**  
**Pg81**

25¼ W × 28½ D × 36¼ H in.  
64 W × 72 D × 92 H cm



**RE41013**  
**Pg73**

29 W × 27 D × 43 H in.  
73 W × 68 D × 109 H cm



**RE44001**  
**Pg59**

19½ W × 12 D × 22 H in.  
49 W × 30 D × 55 H cm



**RE44002**  
**Pg163**

22¾ W × 16¼ D × 7⅛ H in.  
57 W × 41 D × 18 H cm



**RE44003**  
**Pg63**

27¾ W × 20½ D × 19¾ H in.  
69 W × 52 D × 50 H cm



**RE44004** (left)  
**Pg87**

53½ W × 39½ D × 20½ H in.  
135 W × 100 D × 52 H cm

**RE44005** (right)

31 W × 23 D × 20 H in.  
78 W × 58 D × 50 H cm



**RE44006**  
**Pg25**

42 W × 16 D × 23¾ H in.  
106 W × 40 D × 60 H cm



**RE44008**  
**Pg115**

20 W × 20 D × 20 H in.  
50 W × 50 D × 50 H cm



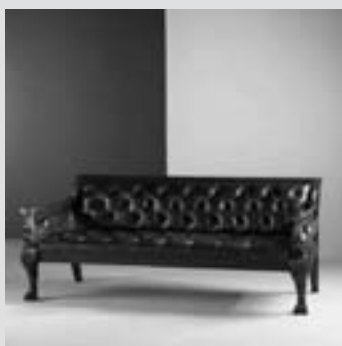
**RE44009**  
**Pg3**

32¼ W × 21 D × 24½ H in.  
81 W × 53 D × 62 H cm



**RE45004**  
**Pg41**

52 W × 27½ D × 37 H in.  
132 W × 69 D × 93 H cm



**RE45005**  
**Pg167**

57 W x 33 D x 38 H in.  
144 W x 83 D x 96 H cm



**RE50001**  
**Pg31**

23<sup>1</sup>/<sub>4</sub> W x 16 D x 29 H in.  
59 W x 40 D x 73 H cm



**RE50003**  
**Pg29**

41 W x 22<sup>1</sup>/<sub>2</sub> D x 31 H in.  
104 W x 57 D x 78 H cm



**RE50004**  
**Pg43**

18<sup>1</sup>/<sub>4</sub> W x 12<sup>1</sup>/<sub>4</sub> D x 25<sup>1</sup>/<sub>8</sub> H in.  
46 W x 31 D x 63 H cm



**RE50005**  
**Pg27**

32<sup>1</sup>/<sub>4</sub> W x 22<sup>1</sup>/<sub>4</sub> D x 41 H in.  
81 W x 56 D x 104 H cm



**RE50006**  
**Pg23**

14 W x 14 D x 25 H in.  
35 W x 35 D x 63 H cm



**RE50007**  
**Pg121**

14<sup>1</sup>/<sub>4</sub> W x 14<sup>1</sup>/<sub>4</sub> D x 27<sup>7</sup>/<sub>8</sub> H in.  
36 W x 36 D x 70 H cm



**RE50008**  
**Pg1**

24 W x 24 D x 29 H in.  
60 W x 60 D x 73 H cm



**RE50009**  
**Pg143**

25<sup>3</sup>/<sub>4</sub> W x 24<sup>7</sup>/<sub>8</sub> D x 27<sup>1</sup>/<sub>2</sub> H in.  
65 W x 63 D x 69 H cm



**RE50010**  
**Pg127**

21 W x 15 D x 28<sup>3</sup>/<sub>8</sub> H in.  
53 W x 38 D x 72 H cm



**RE50011**  
**Pg129**

36<sup>1</sup>/<sub>4</sub> W x 36<sup>1</sup>/<sub>4</sub> D x 34<sup>5</sup>/<sub>8</sub> H in.  
92 W x 92 D x 87 H cm



**RE50012**  
**Pg47**

48 W x 48 D x 30<sup>5</sup>/<sub>8</sub> H in.  
121 W x 121 D x 77 H cm



**RE50013**  
**Pg137**

22<sup>1</sup>/<sub>4</sub> W x 22<sup>1</sup>/<sub>4</sub> D x 28<sup>1</sup>/<sub>4</sub> H in.  
56 W x 56 D x 71 H cm



**RE50014**  
**Pg123**

33 W x 21 D x 26<sup>5</sup>/<sub>8</sub> H in.  
83 W x 53 D x 67 H cm



**RE50018**  
**Pg125**

33 W x 19 D x 28 H in.  
76 W x 48 D x 71 H cm



**RE50019**  
**Pg139**

20<sup>1</sup>/<sub>4</sub> W x 18 D x 32<sup>3</sup>/<sub>4</sub> H in.  
51 W x 45 D x 83 H cm



**RE50020**  
**Pg151**

16<sup>1</sup>/<sub>4</sub> W x 15<sup>1</sup>/<sub>4</sub> D x 34 H in.  
41 W x 38 D x 86 H cm



**RE50021**  
**Pg83**

24 W x 17 D x 30 H in.  
60 W x 43 D x 76 H cm



**RE50022**  
**Pg89**

34 W x 34 D x 30 H in.  
86 W x 86 D x 76 H cm



**RE50023**  
**Pg159**

22<sup>3</sup>/<sub>4</sub> W x 16 D x 29 H in.  
57 W x 40 D x 73 H cm



**RE50024**  
**Pg157**

23<sup>5</sup>/<sub>8</sub> W x 25 D x 30 H in.  
60 W x 63 D x 76 H cm



**RE50025**  
**Pg147**

22 W x 13<sup>3</sup>/<sub>4</sub> D x 35 H in.  
55 W x 34 D x 88 H cm



**RE51001**  
**Pg37**

44 W x 44 D x 20 H in.  
111 W x 111 D x 50 H cm



**RE51002**  
**Pg113**

42 W x 42 D x 23<sup>1</sup>/<sub>2</sub> H in.  
106 W x 106 D x 59 H



**RE51004**  
**Pg49**

30<sup>3</sup>/<sub>4</sub> W x 20<sup>1</sup>/<sub>2</sub> D x 22<sup>1</sup>/<sub>2</sub> H in.  
78 W x 52 D x 57 H cm



**RE52001** (left facing)  
**Pg33**

36 W x 36 D x 30 H in.  
91 W x 91 D x 76 H cm

**RE52001** (right facing)



**RE52003**  
**Pg145**

41 W x 38<sup>3</sup>/<sub>4</sub> D x 30 H in.  
104 W x 98 D x 76 H cm



**RE52004**  
**Pg111**

36 W x 23 D x 30 H in.  
91 W x 58 D x 76 H cm



**RE53001**  
**Pg39**

36 W x 17 D x 38 H in.  
91 W x 43 D x 96 H cm



**RE53002**  
**Pg117**

49 W x 13 D x 34 H in.  
124 W x 33 D x 86 H cm



**RE53005**  
**Pg135**

36 W x 17 D x 37 H in.  
91 W x 43 D x 93 H cm



**RE53006**  
**Pg101**

48 W x 18 D x 34<sup>3</sup>/<sub>8</sub> H in.  
121 W x 45 D x 87 H cm



**RE60004**  
**Pg153**

40 W x 20 D x 32<sup>3</sup>/<sub>4</sub> H in.  
101 W x 50 D x 83 H cm



**RE60005**  
**Pg65**

45 W x 23<sup>5</sup>/<sub>8</sub> D x 92 H in.  
114 W x 60 D x 223 H cm



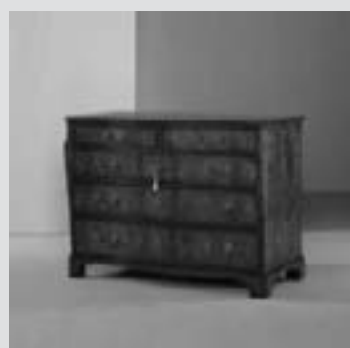
**RE60008**  
**Pg71**

34 W x 18 D x 34<sup>1</sup>/<sub>2</sub> H in.  
86 W x 45 D x 87 H cm



**RE60009**  
**Pg61**

32<sup>1</sup>/<sub>2</sub> W x 32 D x 32<sup>1</sup>/<sub>8</sub> H in.  
82 W x 81 D x 81 H cm



**RE60010**  
**Pg85**

52 W x 24 D x 37 H in.  
132 W x 60 D x 93 H cm



**RE60011**  
**Pg119**

32 W x 18 D x 34 H in.  
81 W x 45 D x 86 H cm



**RE61001**  
**Pg53**

52<sup>3</sup>/<sub>4</sub> W x 16<sup>3</sup>/<sub>8</sub> D x 37<sup>1</sup>/<sub>8</sub> H in.  
133 W x 41 D x 94 H cm



**RE61002**  
**Pg109**

46 W x 15 D x 36 H in.  
116 W x 38 D x 91 H cm



**RE61003**  
**Pg99**

64 W x 16 D x 36<sup>1</sup>/<sub>4</sub> H in.  
162 W x 40 D x 92 H cm



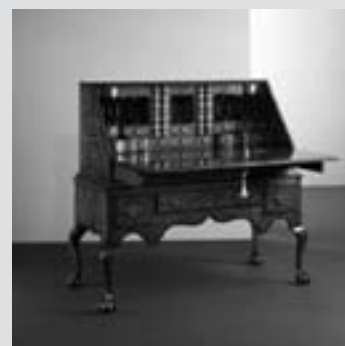
**RE61005**  
**Pg95**

40 W x 18 D x 49 H in.  
101 W x 45 D x 124 H cm



**RE63001**  
**Pg79**

88<sup>1</sup>/<sub>8</sub> W x 20<sup>1</sup>/<sub>2</sub> D x 92 H in.  
223 W x 52 D x 233 H cm



**RE71001**  
**Pg35**

47<sup>1</sup>/<sub>8</sub> W x 23<sup>1</sup>/<sub>4</sub> D x 44 H in.  
119 W x 59 D x 111 H cm



**RE71002**  
**Pg51**

52 W x 26 D x 30 H in.  
132 W x 66 D x 76 H cm



**RE71003**  
**Pg141**

56 W x 36 D x 30 H in.  
142 W x 91 D x 76 H cm



**RE71004**  
**Pg69**

42 W x 24 D x 30 H in.  
106 W x 60 D x 76 H cm



**RE71005**  
**Pg77**

86 W x 47 1/2 D x 30 H in.  
218 W x 120 D x 76 H cm



**RE71006**  
**Pg149**

56 W x 28 D x 30 H in.  
142 W x 71 D x 76 H cm



**RE71007**  
**Pg21**

56 W x 30 D x 30 H in.  
142 W x 76 D x 76 H cm



**RE71009**  
**Pg57**

23 1/4 W x 23 3/4 D x 34 H in.  
59 W x 60 D x 86 H cm



**RE71010**  
**Pg55**

38 1/4 W x 21 1/4 D x 30 H in.  
97 W x 53 D x 76 H cm



**RE99004**  
**Pg11**

60 1/8 W x 60 1/8 D x 30 H in.  
152 W x 152 D x 76 H cm

Extending to  
84 W x 84 D x 30 H in.  
213 W x 213 D x 76 H cm

### Circular

#### RE99003

60 1/8 W x 60 1/8 D x 30 H in. / 152 W x 152 D x 76 H cm  
Extending to 84 W x 84 D x 30 H in. / 213 W x 213 D x 76 H cm

#### RE99005, RE99006

67 1/2 W x 67 1/2 D x 30 H in. / 171 W x 171 D x 76 H cm  
Extending to 90 W x 90 D x 30 H in. / 228 W x 228 D x 76 H cm

**Pg13**

### Oval

#### RE99097; RE99108

88 1/2 W x 57 1/2 D x 30 H in. / 224 W x 145 D x 76 H cm  
Extending to 107 W x 74 1/4 D x 30 H in. / 271 W x 188 D x 76 H cm

**Pg13**

Veneers and solid woods exhibit the individual characteristics of the timber from which they are cut and while every effort is made to reproduce accurately the colour of the furniture illustrated there may be some variations in grain pattern and colour. Natural colour changes may also occur with age in the materials used, particularly in leather, wood and veneer.

Dimensions quoted are approximate and Theodore Alexander reserves the right to alter specifications in the interest of improved quality and design.

Designs and design elements featured in this catalogue are the subject of pending and issued patents.

rep-li-ca logo, art direction and design  
TA International Services Co.Ltd,  
Photography and Prepress  
Alderman Studios, High Point, North Carolina, USA  
Printing Oxford Graphic, Singapore  
Theodore Alexander 2006 ©  
RE/01/06





A UNIQUE COLLECTION BY  
**THEODORE**  

---

**ALEXANDER**®