

**Total Cubicle Solutions**  
Typhoon Leisure Range  
Cubicles • Vanity Units • IPS Units



## Typhoon Range

Introducing a new dimension in washrooms.

When you require a solution that just works, Typhoon provides the answer! Suitable for pools or high traffic areas, Typhoon offers an attractive, cost effective solution.

Manufactured in high quality, 12mm compact grade laminate, the system is versatile and is suitable for WC, shower and changing room applications.

Typhoons colour flexibility has always been a key feature, providing customers with contrasting colours to highlight components and to bring creative flair into the washroom. Total Cubicle Solutions has raised expectations by introducing 33 stimulating colours, providing you with the optimum colour palette to deliver innovative washroom solutions.

To comply with new Building Regulations, part M, Total Cubicle Solutions has added enlarged and ambulant cubicle options to the Typhoon range. Together with our service promise, you are now in the position to specify, with confidence, a stunning washroom installation for any market sector, at an economical price.

Total Cubicle Solutions take pride in providing a personalised, professional and cost effective service and can recommend Typhoon in the following applications:

- Hospitals
- Health Centres
- Sports Stadiums
- Schools and Colleges
- HM Prisons
- Night Clubs and Industrial applications.

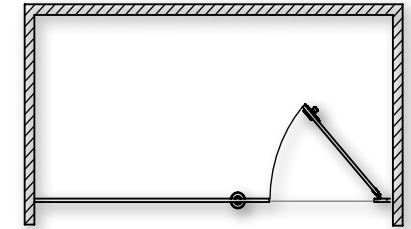
We can offer a fast turnaround for the tightest of deadlines and having built up a reputation for superb after sales support, our goal is to supply your cubicles with the minimum of fuss, ensuring that from the start to finish, your project runs smoothly.

All this, and the added reassurance that you are dealing with people with over 75 years experience in the industry.

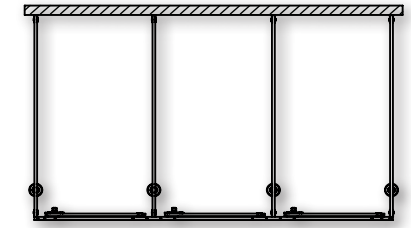


## Toilet Cubicle Layout Options

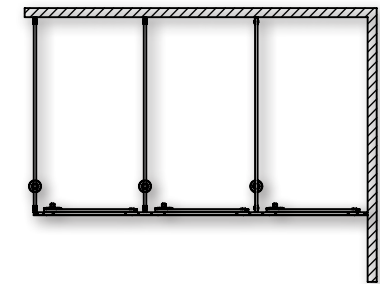
### Single Cubicle (SI)



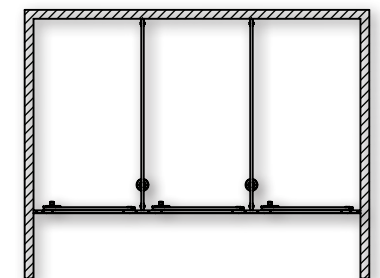
### Free Standing (FS)



### Open Ended (OE)



### Between Walls (BW)



Units 5-7, Luton Street  
Liverpool  
L5 9XR

T: 0844 800 7785  
F: 0844 800 7738  
E: sales@totalcubicles.co.uk

## Fittings and Accessories

Typhoon fittings are built to stand the test of time. They come in an attractive black powder coated finish to contrast with the Typhoon Range colour options.

TCHIN13B / TCHIN19B



TCCHA13B / TCCHA19B



TCTRHOLDB



SHAL13B / SHAL19B



TCCHOOKB



SHALC2MB / SHALC4MB



SHAHR



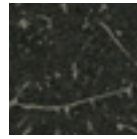
DOOR BUFFER



Units 5-7, Luton Street  
Liverpool  
L5 9XR

T: 0844 800 7785  
F: 0844 800 7738  
E: sales@totalcubicles.co.uk

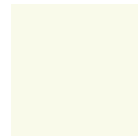
## Typhoon Colour Options



Black Craquele  
C0-09



Cyber Blue  
CB-3



White  
E0-00



Silver Grey  
E0-02



Mellon Yellow  
E2-31



Gold Yellow  
E3-42



Soft Pink  
E5-11



Poppy Red  
E7-62



Heaven Blue  
E17-30



Powder-Blue  
E17-32



Aqua Blue  
E17-52



Light Blue  
E19-11



Aquamarine  
E20-12



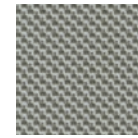
Pastel Green  
E23-21



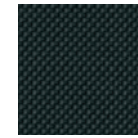
Icy Blue  
E25-01



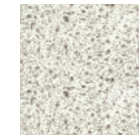
Steel Blue  
E25-04



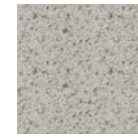
Micro Grey  
MC-1



Micro Black  
MC-2



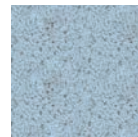
Speckled White  
S0-00



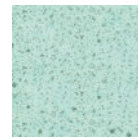
Speckled Silver  
S0-02



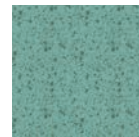
Speckled Sand  
S3-01



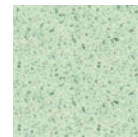
Speckled  
Heaven Blue  
S17-30



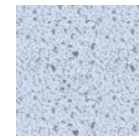
Speckled Light Blue  
S19-11



Speckled  
Aquamarine  
S20-12



Speckled  
Pastel Green  
S23-21



Speckled Icy Blue  
S25-21



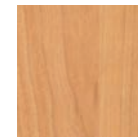
Silver-Maple  
W71-03



Beech  
W73-01



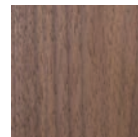
Oak  
W74-01



Wild Cherry  
W78-01



Lime  
W80-01



Verona Walnut  
W82-03



European Wild Apple  
W88-02



Units 5-7, Luton Street  
Liverpool  
L5 9XR

T: 0844 800 7785  
F: 0844 800 7738  
E: sales@totalcubicles.co.uk

## Vanity Units

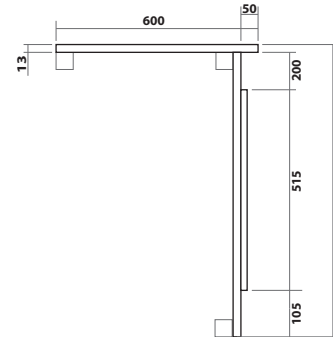
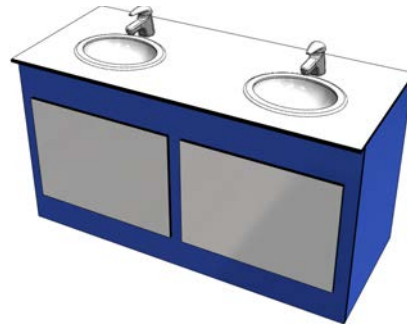
The Typhoon range of vanity units has an exceptional resistance to water and impact and is available in matching colours to the Typhoon range of cubicles.



### Vanity Unit Layout Options

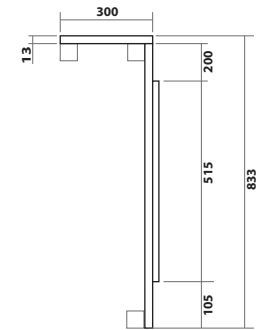
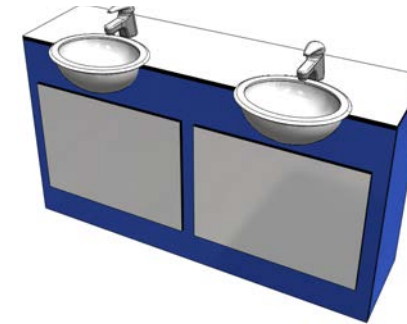
#### Standard Vanity Unit

TYPHOVSTD



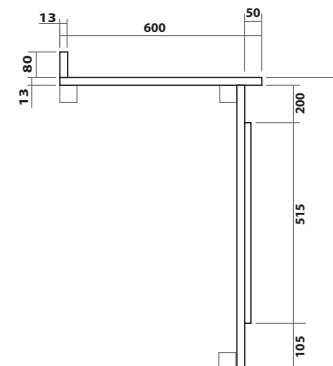
#### Semi-recessed Vanity Unit

TYPHOVSR



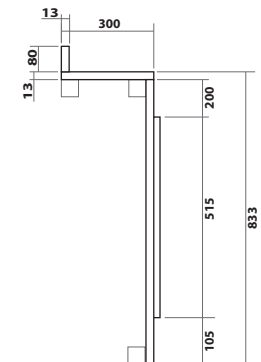
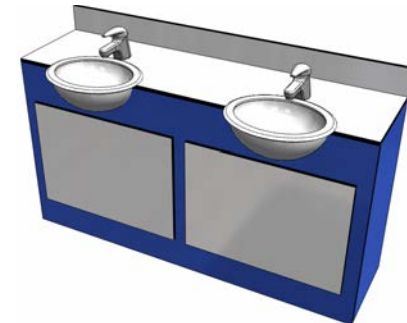
#### Standard Vanity Unit with Loose Upstand

TYPHOVSTDLU



#### Semi-recessed Vanity Unit with Loose Upstand

TYPHOVSRLU



Units 5-7, Luton Street  
Liverpool  
L5 9XR

T: 0844 800 7785  
F: 0844 800 7738  
E: sales@totalcubicles.co.uk

## IPS Units

The Typhoon range of IPS units has an exceptional resistance to water and impact.

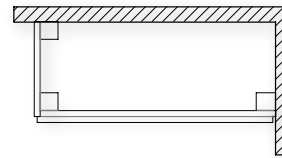


### IPS Layout Options

**Free Standing**  
(FS)



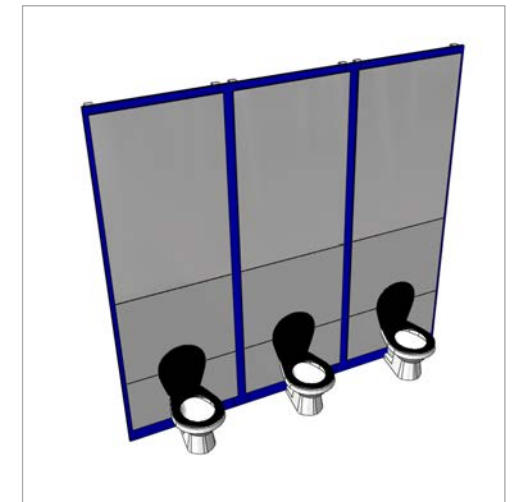
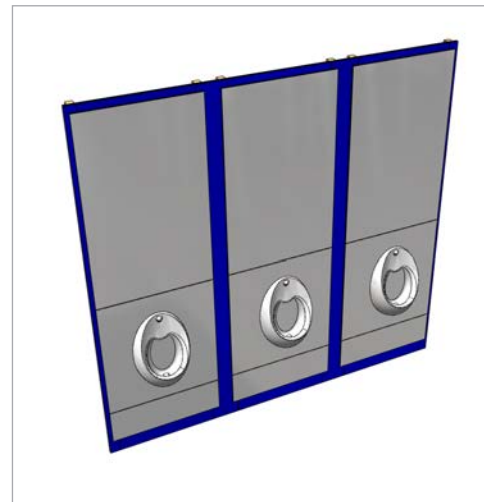
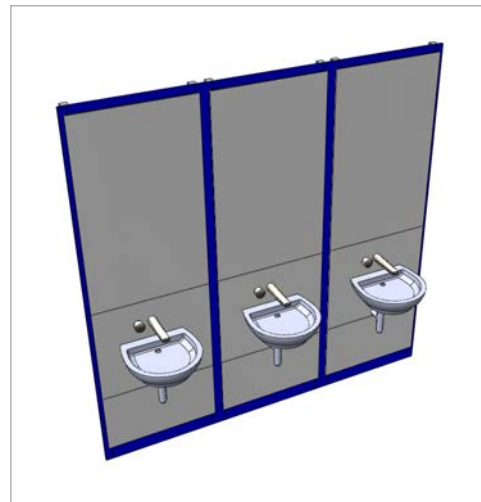
**Open Ended Left**  
(OELH)



**Open Ended Right**  
(OERH)



**Hole In Wall**  
(HIW)



Units 5-7, Luton Street  
Liverpool  
L5 9XR

T: 0844 800 7785  
F: 0844 800 7738  
E: sales@totalcubicles.co.uk

## Installation Instructions

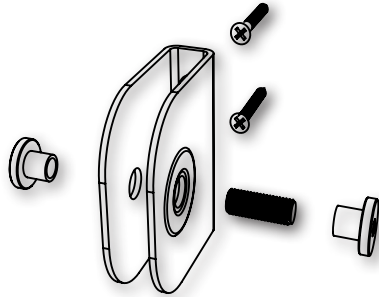
Please look over the enclosed drawings to familiarise yourself with the parts required to construct your cubicle. Check that the sizes you have provided for manufacture are correct and match the sizes on site.

### Installing The Partitions

**Please Note:** We no longer pre-drill the partitions as Soil Stacks and Window Placements can compromise the fitting position. Normally our Cubicles are divided equally along the wallspace except where Ambulant or Disabled Cubicles are to be implemented.

#### Step 1

Fix the partition channel brackets to the rear wall using 35x4mm posi screws and red plugs.



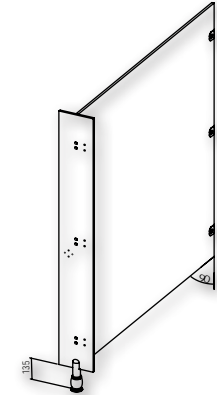
#### Step 2

Fix Channel brackets to Pilasters using Bolt through interference fit lost head t-nut.



#### Step 3

Next check the squareness and height of the partition (approx 135mm from the ground) Then fix the height adjustable leg to the floor with 35x4mm posi screws and red plugs, (please ensure before drilling that no under floor heating is present).

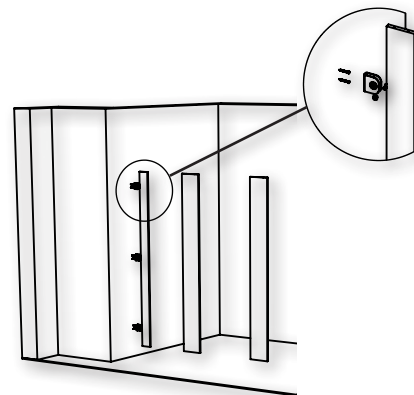


### Installing Pilasters

#### Step 4

Start by installing an end pilasters back to the wall on the brackets provided, using 35x4mm posi screws and red plugs.

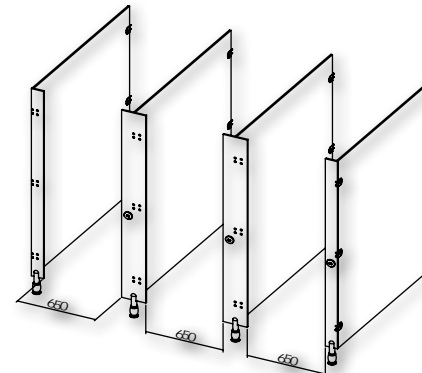
Set the pilaster height 135mm up from the floor to match the partition height and tighten the T-Nuts down securely on the pilaster



### Check Measurements

#### Step 5

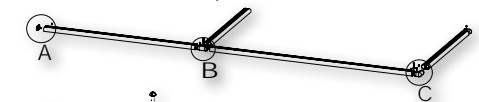
Next, measure the door aperture; it should measure 35mm less than the overall width of the door. If this matches, you can continue on, installing the remaining centre pilasters, again checking the aperture and measurements as you go.



### Fit The Headrail Frame

#### Step 6

The Channel headrail is what braces the whole cubicle construction, so correct fitment of this item is essential. Start by cutting the headrail to the correct length. Next, fit the rail over the pilaster. The tubular frame should be constructed in accordance to the shape of the cubicles.



Detail A shows the application for mounting the frame

Detail B shows the 3 way connection bracket used to extend the

Detail C shows the corner assembly for the open end cubicles.



Units 5-7, Luton Street  
Liverpool  
L5 9XR

T: 0844 800 7785  
F: 0844 800 7738  
E: sales@totalcubicles.co.uk

# Installation Instructions

Please look over the enclosed drawings to familiarise yourself with the parts required to construct your cubicle. Check that the sizes you have provided for manufacture are correct and match the sizes on site.

## Step 7

Fix Headrail end cap to wall where appropriate, as shown in detail A in step 6. Lower Headrail frame onto cubicles

Pre-drill the pilasters through the top of the headrail and affix 3 12x4mm screws into the top of each pilaster bracing the construction.



## Accessories

### Step 9

Fit the hat, coat hook and toilet roll holders at the desired height using the 12x4mm Resistorx screws piloted to 10mm depth.

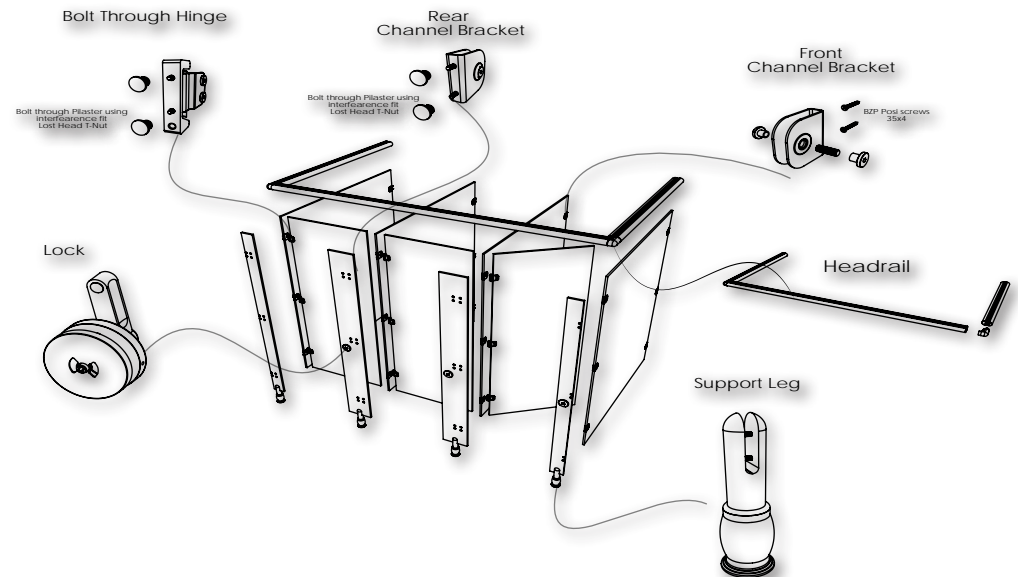
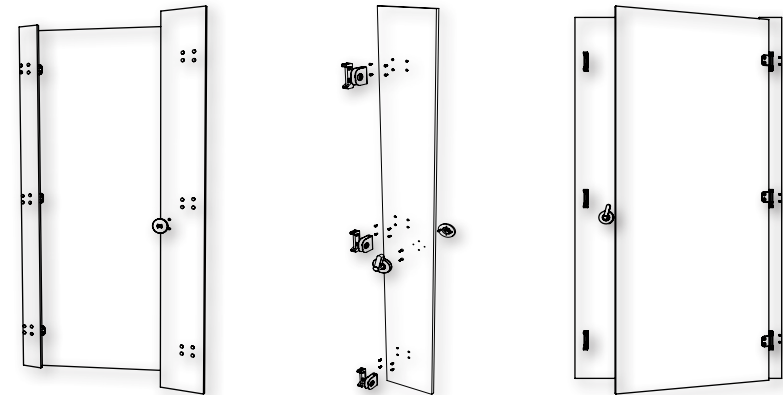
## Fitting The Doors And Lock Keeps

### Step 8

The doors provided should overlap the aperture by 35mm. The door should now be fitted ensuring an equal overlap of 17.5mm on either side of the pilaster/aperture. Fix hinges using bolt through interference fit lost head t-nut.

The lock is attached to the pilaster in two halves. Fix the keep arm half to the reverse of the Pilaster bolting through from the front. Nest align the face plate to the interference holes and tighten using allen key.

**Please Note:** The nylon cams in the hinges can be adjusted to allow the door to swing open or closed. To change the operation of the closure, remove the nylon cam and turn in through 90 degrees.



Units 5-7, Luton Street  
Liverpool  
L5 9XR

T: 0844 800 7785  
F: 0844 800 7738  
E: sales@totalcubicles.co.uk