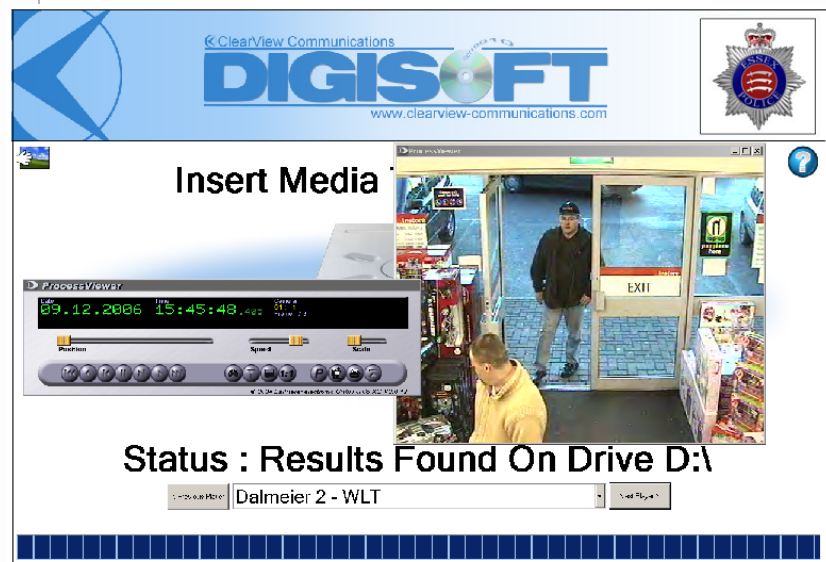


Uniclass
L7626
June 2009



## DigiSoft CDV052

Digital CCTV View and Print Software



### Features and Benefits

Designed for use by non-technical staff

Instantly view CCTV footage

Take a print of the image of interest

Speed up investigations by showing suspects evidence immediately

Built in UniVue player for ease of replay

Touch screen display option

On screen help pops up when a player is launched

Regular upgrades with new players / features

ClearView's DigiSoft CCTV viewing software allows agencies within the Criminal Justice System to view CCTV footage and then print images of interest. This makes their use of CCTV more effective in investigating and solving crime, speeding up investigations and allowing specialist video labs to focus on more technically challenging work.

DigiSoft's user interface is simple to use with a minimum of controls. This allows use to concentrate on the tasks they are trying to accomplish, without needing to become video or computer experts.

DigiSoft automatically selects the appropriate CCTV player from the system's library of hundreds of viewers.

As a result, users can view footage directly on their PC rather than having to wait for the disk to be sent to a central facility for viewing or conversion. This can result in suspects being shown evidence and charged immediately rather than having to be bailed to return when the footage has been processed.

## Automatic Detection and Play of Digital CCTV and Video formats

The software is based on ClearView's "Auto Code Detect" as used in our DigiVue and DigiTrac products. It has been developed to have minimum user intervention so that once a disk is inserted in the drive it is automatically analysed. The software then builds a list of possible players with the most likely player at the top of the list. This player is launched and, if possible, the footage file is automatically loaded. For those players where footage has to be manually imported, on-screen help is displayed to help the user.

If the most likely player does not play the footage, the second player in the list can be selected by pressing the "Next Player" button. If the user knows the name of the player, it can be selected from a drop down list and played immediately.

## New Players and Codecs

New players and codecs are added to the DigiSoft library and distributed to users on a quarterly basis to ensure that the system is kept up-to-date with the latest players and software versions.

## Printing

To print an area of interest simply press the print screen button and define the area required using the cross hairs. The image is sent directly to the printer.

## Help

The help menu comprises a set of user instructions and help information for every CCTV player on the system. This is automatically displayed as a player is launched.

## PC Hardware and Software Requirements

- ◆ Pentium 4 3.0Ghz or better
- ◆ 1Gb ram or better
- ◆ Hard disk with minimum of 5Gb free space
- ◆ 128mb or better graphics card
- ◆ Monitor resolution of 1280x1024, 32bit colour or better
- ◆ DVD drive
- ◆ Media Card reader (recommended)
- ◆ PC Printer (Canon Pixma or equivalent recommended)
- ◆ Operating System Windows XP with SP2
- ◆ Account with administrator user rights

## UniVue - Universal Player

Built into the DigiSoft program is ClearView's innovative UniVue function. UniVue is a unique technological breakthrough in the world of CCTV decoding. It provides users with a single GUI (graphical user interface) for the replay a wide range of different CCTV video formats without the need for users to re-learn player controls for each manufacturer's system.



## UniVue GUI

