



Uniclass
L7626
Feb 2009

DigiVue-Pro CDV062

Digital Video & CCTV Workstation



Features and Benefits

Auto-code detection of digital CCTV, mobile phone and video formats

Plays DVD-/+/RAM, CD, digital stills media and floppy disc

Converts Digital to analogue video and vice versa

Fire wire, USB, composite, Y/C, STEREO audio, LAN, parallel port

High speed 1:2 duplication

File verification

Deleted file retrieval

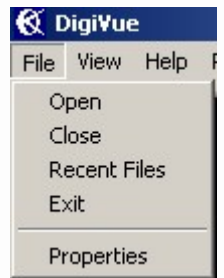
Video/audio encryption

Audit trail

Fully password protected

DigiVue-Pro is a low-cost digital video workstation ideal for use by non-technical personnel to view Digital CCTV for investigative, evidential and presentation purposes. It enables all common CCTV, still image, audio and DVD formats to be automatically displayed and output as standard video. Key facilities include:-

- Digital CCTV Viewing
- Digital to Analogue video conversion
- Duplication
- Video Editing
- Image Save and Print
- Document preparation
- File image retrieval and viewing
- Encryption
- Verification



All function are accessed from the main DigiVue control screen that Microsoft Windows users will be instantly familiar with.

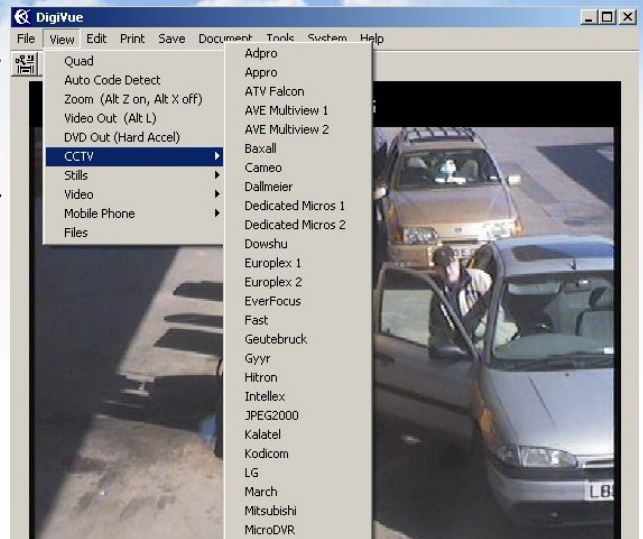
DigiVue-Pro utilises ClearView's proprietary video player developed specifically for surveillance CCTV video replay. Standard video files can be played instantly with full control over replay speed (x0.1-x10) and frame by frame advance.

Automatic Detection and Play of Digital CCTV and Video formats

An “**Auto Code Detect**” facility is available for digital CCTV and standard video formats. Simply insert the digital media - DigiVue-Pro will automatically search and display the video file.

In addition to CCTV, DigiVue-Pro has facilities for playing standard DVDs (including video interviews), digital camera stills and mobile phone pictures and video.

Full screen or zoomed digital video can be output to a standard video monitor or video tape (composite or Y/C), printed or saved—all by simple keyboard shortcuts.



Editing

Sections of video footage may be output directly to video tape and compiled for presentations. Alternatively, digital video footage may be cut and spliced with still images and titles to make an edited compilation for presentation purposes. The compilation may be saved on CD or DVD for replay on PC, laptop or DVD player. Index points can be marked on the video so that specific sections can be found instantly. Standard DVD players will show the title screen with all index points. This system is suited for replay in court.



Duplication

Any video or image file can be easily copied onto VHS tape (optional video recorder), CD, DVD, floppy disc or paper print. High speed CD/DVD duplication is possible 1:1, or two simultaneous copies can be made of stored material.



Security

DigiVue-Pro is password protected to ensure that access is controlled by function and user. System operations are logged by user, time and date.

ClearView Digital/analogue video processing system comparison

	Decodes Digital CCTV AVI, DVD	Decodes Analog Mux CCTV	Converts Digital to analog	Converts Analog to digital	Converts Digital to digital	Masks video	Copies CD/DVD	Edits video	Supports HD caddies Zip, LSfloppy
DigiVue-Pro	Y	N	Y	Y	Y	N	X2	Y	N
DigiVue-Demux	Y	Y	Y	Y	Y	N	X2	Y	N
Digitrac-Pro	Y	N	Y	Y	Y	Y	X4	Y	Y
Digitrac-Demux	Y	Y	Y	Y	Y	Y	X4	Y	Y