

Background

Videominer was developed in Holland in close co-operation with several Police forces. It can **search 1 hour of processed video footage in 1 second**. It can process live or recorded video footage from Digital or taped sources unattended.

Awarded the SSA Silver award for most innovative product in 2007, Videominer has proved to be extremely popular throughout European Police Forces due to its full frame PAL processing. It has to be seen to be believed (call us for a free on-site demonstration.).

Videominer enables a new approach to video investigation.

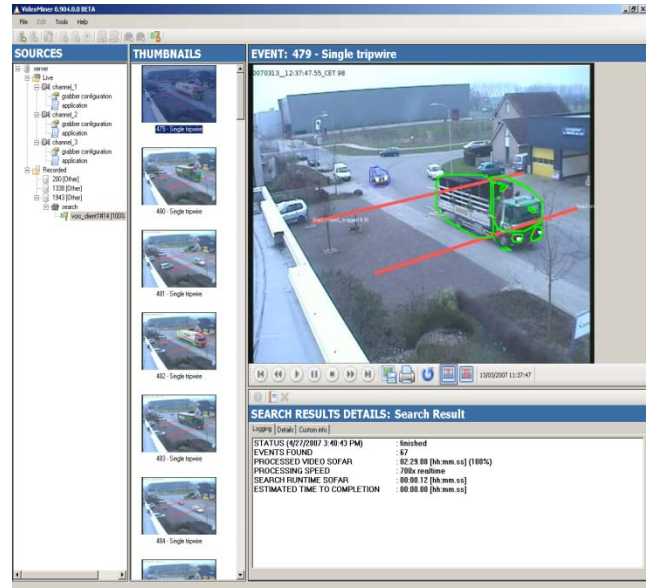
Video footage collected from Shops, Town Centers, Airports and Transportation can be uploaded, processed and investigated. Previously minimal recordings were collected. These were necessarily short to reduce the amount of investigation time allocated.

By applying rules and checking the results, an operator can interrogate optimal amounts of footage in the minimum amount of time.

The resultant video clips (shown opposite) allow for the quickest and most accurate resultant footage and allow further refinement in seconds by utilising secondary queries on ALL processed footage.

Alternatively, with the application of our equipment at the camera, footage can be processed in real time allowing direct access to processed footage on all recordings.

The thorough analysis and application of rules can deliver outstanding results, compared to the cost and time involved in traditional video investigation.



Video Object Analysis according to Videominer

Complete Object Analysis in four stages:

- **Image Enhancement**
Noise removal, image stabilisation and contrast enhancement
- **Object Finding**
Detection of object based on edges, texture, motion and background reference
- **Object Analysis**
Measurement of object features based on contours, colour and shape.
- **Object Identification and Tracking**
An outline of the detected object is drawn.
- This is known as blobbing.

XTRACT™ processor

Proprietary developed processor for video and audio analysis forms the heart of the Video Object Analysis server. With unsurpassed speed and accuracy.

Full Object Analysis

Fundamentally new approach in four steps leads to complete analysis of objects in video footage.

Object Database

Unsurpassed fast search of all objects, including moving objects, in a database. With the aid of interactive and post-capture defined queries.

Interactive application

The GUI is developed and refined in close cooperation with several law enforcement organisations such as CIPR&D, police force Noord-Holland Noord.

Process

500 ~ 5000 times real-time search speed in video.

Accurate and COMPLETE analysis of objects due to Observision's new approach:

COMPLETE Object Analysis

User friendly graphical user interface, developed in close cooperation with several police forces.

Easy to use capture and processing of analogue and digital footage.

Tuning of image enhancement prior to video capture for even better search results and post capture adaptation of queries.

Complete Object Analysis captures every object and it's specific parameters including shape, speed, size, colour and texture. (The result of the capture and processing stage is a digital video archive and a database with all object data).

Rule Based Analysis

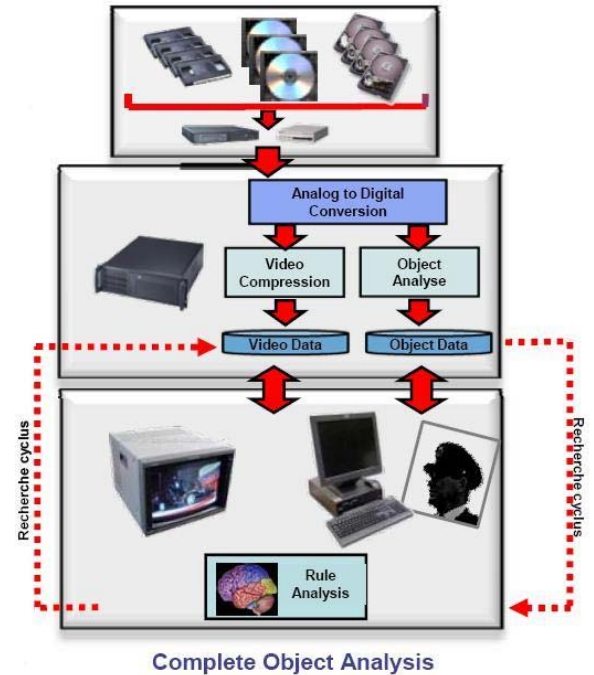
After the processing stage, queries on object, can be applied to database at the speed of 500 – 5000 times faster than video-rate, with the aid of Rule Based Analysis.

Every object has a unique reference to the video source and date/time, enabling instant access to the related piece of video.

The big benefit

Thanks to COMPLETE PAL full frame analysis and the ability to adjust queries on the object database, investigation of video footage can be carried out many times faster and with far greater precision.

With Videominer, nothing can escape.



Example

When did a car drive faster than 15 mph?
When did a lorry drive here?
When was the queue?



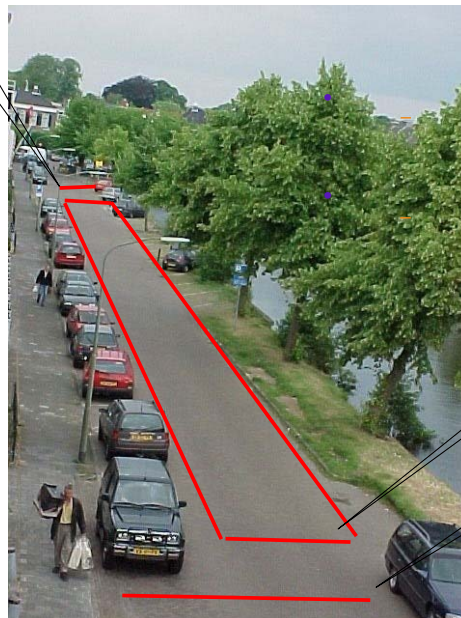
Videominer

The product for video object investigation



ClearView Communications Limited
Widford Industrial Estate, Robjohns Road
Chelmsford, Essex, CM1 3AG, UK
Tel: 01245 214100 • Fax: 01245 214101
E-mail: info@clearview-communications.com
Web: www.clearview-communications.com

Sales: 01245 214104 Purchasing: 01245 214106
Service: 01245 214110 Technical: 01245 214109
Returns: 01245 214108 Accounts: 01245 214107



Compute average speed of vehicles driving past

Object passes Line A and Line C

Queue detection

Object(s) in Zone B standing still

Zone B

Line