

New Linoleum xf



A SURFACE REVOLUTION

LINOLEUM

Linoleum Passion

- > Natural and renewable raw materials
- > Wide collection for endless creative possibilities
- > Design toolbox with three entries – colour, pattern and trends
- > Superior xf surface protection for extreme toughness
- > Easy cleaning and maintenance – no initial wax or polish needed



Linoleum Passion



For more than a hundred years, linoleum flooring from Tarkett has been made with care using the same manufacturing process and renewable raw materials like linseed oil, resin, jute, wood and cork flour.

We at Tarkett want to share our passion for linoleum with you by offering all its strong emotional values in a fresh, dynamic and very versatile design toolbox. With new Linoleum xf from Tarkett you can satisfy people's emotional needs, functional demands and financial requirements simultaneously.



Allegro xf

Allegro xf colours

With the power of eight multicolour expressions, Allegro xf opens up opportunities for creating great impact in interior design settings. Its unique design is based on five vivid colours.

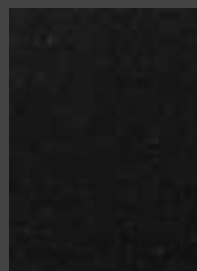


Grey mix
2.5 mm : 1842 140
WR: 1751 140

Etrusco xf

Etrusco xf colours

The uniqueness of Etrusco xf lies in its ten bright, strong colours, which seem to have come straight from the tube. Thanks to its deep colours and plain design, Etrusco xf can be combined easily with any other type of pattern or used alone, for great design effects.



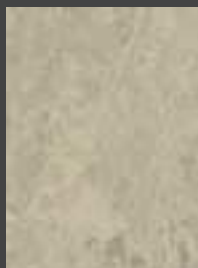
Black
2.5 mm : 1877 098
WR: 1751 098

Veneto xf colours

With its marbled design, divided into Soft and Strong pattern levels, and 50 colour references, Veneto xf is a great choice for all commercial segments.

Veneto xf SOFT

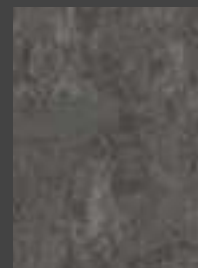
SOFT PATTERN



Grey
2.0 mm : 1871 793
2.5 mm : 1872 793
WR: 17511 793



Slate
2.0 mm : 1871 674
2.5 mm : 1872 674
WR: 1751 674



Steel
2.0 mm : 1871 673
2.5 mm : 1872 673
WR: 1751 673



Concrete
2.0 mm : 1871 686
2.5 mm : 1872 686
WR: 1751 686

Veneto xf STRONG

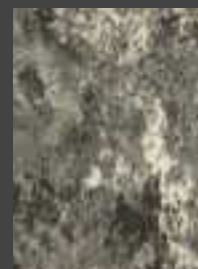
STRONG PATTERN



Platinum
2.0 mm : 1871 684
2.5 mm : 1872 684
WR: 1751 684



Charcoal
2.0 mm : 1871 610
2.5 mm : 1872 610
WR: 1751 610



Pebble
2.0 mm : 1871 604
2.5 mm : 1872 604
WR: 1751 604



Stone
2.0 mm : 1871 692
2.5 mm : 1872 692
WR: 1751 692

Allegro xf



Blue mix
2.5 mm : 1842 170
WR: 1751 467

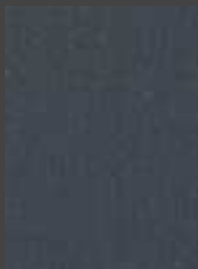


Indigo mix
2.5 mm : 1842 160
WR: 1751 160

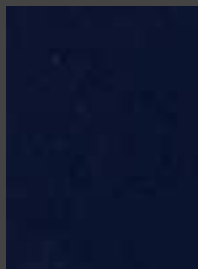


Anise mix
2.5 mm : 1842 150
WR: 1751 150

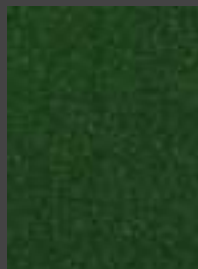
Etrusco xf



Metal
2.5 mm : 1877 051
WR: 1751 051



Indigo
2.5 mm : 1877 066
WR: 1751 066



Green
2.5 mm : 1877 050
WR: 1751 050

Veneto xf SOFT



Zinc
2.0 mm : 1871 671
2.5 mm : 1872 671
WR: 1751 671



Pewter
2.0 mm : 1871 685
2.5 mm : 1872 685
WR: 1751 685



Lagoon
2.0 mm : 1871 666
2.5 mm : 1872 666
WR: 1751 664



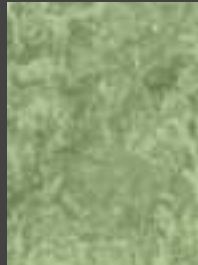
Denim
2.0 mm : 1871 669
2.5 mm : 1872 669
WR: 1751 669



Lavender
2.0 mm : 1871 670
2.5 mm : 1872 670
WR: 1751 670



Aquamarine
2.0 mm : 1871 664
2.5 mm : 1872 664
3.2 mm : 1873 664
WR: 1751 664



Leaf
2.0 mm : 1871 751
2.5 mm : 1872 751
WR: 1751 751

Veneto xf STRONG



Aluminium
2.0 mm : 1871 672
2.5 mm : 1872 672
WR: 1751 672



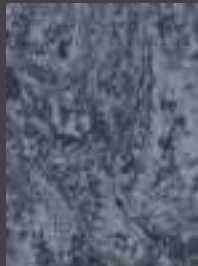
Horizon
2.0 mm : 1871 663
2.5 mm : 1872 663
3.2 mm : 1873 663
WR: 1751 660



Ocean
2.0 mm : 1871 665
2.5 mm : 1872 665
3.2 mm : 1873 665
WR: 1751 665



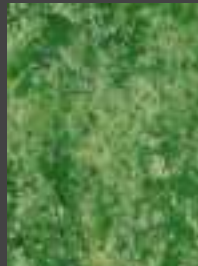
Navy
2.0 mm : 1871 688
2.5 mm : 1872 688
WR: 1751 068



Ink
2.0 mm : 1871 662
2.5 mm : 1872 662
WR: 1751 662



Turquoise
2.0 mm : 1871 677
2.5 mm : 1872 677
WR: 1751 677



Grass
2.0 mm : 1871 650
2.5 mm : 1872 650
WR: 1751 650

Allegro xf



Red mix
2.5 mm : 1842 100
WR: 1751 100



Orange mix
2.5 mm : 1842 130
WR: 1751 130

Etrusco xf



Anise
2.5 mm : 1877 095
WR: 1751 095



Purple
2.5 mm : 1877 049
WR: 1751 049

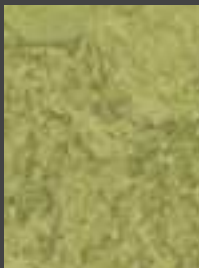


Red
2.5 mm : 1877 041
WR: 1751 041

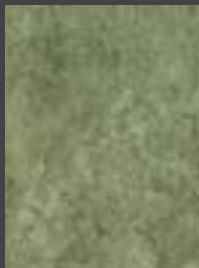


Orange
2.5 mm : 1877 037
WR: 1751 037

Veneto xf SOFT



Olive
2.0 mm : 1871 750
2.5 mm : 1872 750
WR: 1751 750



Sage
2.0 mm : 1871 753
2.5 mm : 1872 753
WR: 1751 753



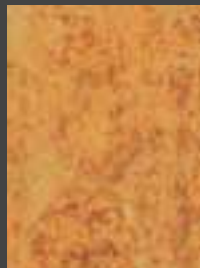
Lila
2.0 mm : 1871 649
2.5 mm : 1872 649
WR: 1751 649



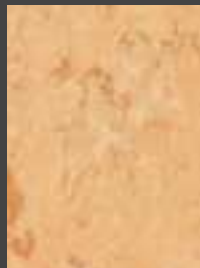
Carmine
2.0 mm : 1871 645
2.5 mm : 1872 645
WR: 1751 645



Salmon
2.0 mm : 1871 642
2.5 mm : 1872 642
WR: 1751 642



Amber
2.0 mm : 1871 636
2.5 mm : 1872 636
WR: 1751 636



Coral
2.0 mm : 1871 615
2.5 mm : 1872 615
WR: 1751 615

Veneto xf STRONG



Absinthe
2.0 mm : 1871 695
2.5 mm : 1872 695
WR: 1751 695



Khaki
2.0 mm : 1871 752
2.5 mm : 1872 752
WR: 1751 752



Plum
2.0 mm : 1871 618
2.5 mm : 1872 618
WR: 1751 618



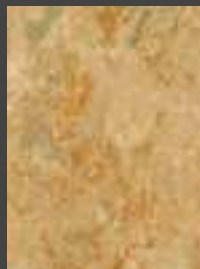
Burgundy
2.0 mm : 1871 744
2.5 mm : 1872 744
WR: 1751 744



Terracotta
2.0 mm : 1871 641
2.5 mm : 1872 641
3.2 mm : 1872 641
WR: 1751 641



Copper
2.0 mm : 1871 634
2.5 mm : 1872 634
WR: 1751 634



Citrine
2.0 mm : 1871 631
2.5 mm : 1872 631
WR: 1751 631

Allegro xf



Yellow mix

2.5 mm : 1842 120

WR: 1751 120



Beige mix

2.5 mm : 1842 121

WR: 1751 121

Etrusco xf



Yellow

2.5 mm : 1877 036

WR: 1751 036

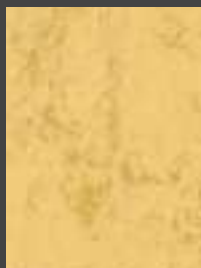


Beige

2.5 mm : 1877 002

WR: 1751 002

Veneto xf SOFT

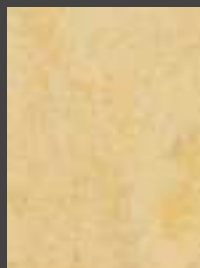


Corn

2.0 mm : 1871 612

2.5 mm : 1872 612

WR: 1751 612

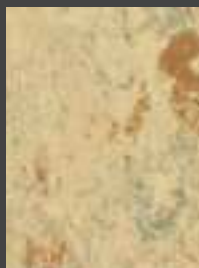


Eggshell

2.0 mm : 1871 619

2.5 mm : 1872 619

WR: 1751 619



Sisal

2.0 mm : 1871 611

2.5 mm : 1872 611

3.2 mm : 1873 611

WR: 1751 313

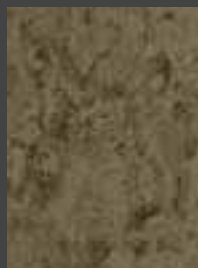


Sand

2.0 mm : 1871 622

2.5 mm : 1872 622

WR: 1751 119

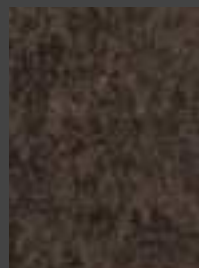


Earth

2.0 mm : 1871 607

2.5 mm : 1872 607

WR: 1751 607

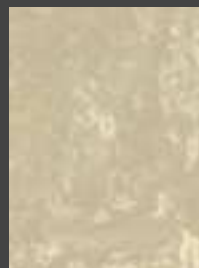


Chocolate

2.0 mm : 1871 632

2.5 mm : 1872 632

WR: 1751 632



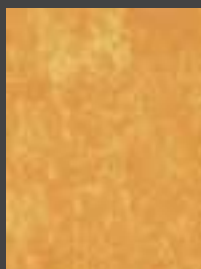
Ivory

2.0 mm : 1871 601

2.5 mm : 1872 601

WR: 1751 601

Veneto xf STRONG



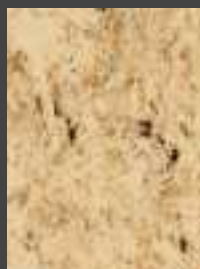
Sunflower

2.0 mm : 1871 628

2.5 mm : 1872 628

3.2 mm : 1873 628

WR: 1751 628



Cork

2.0 mm : 1871 679

2.5 mm : 1872 679

WR: 1751 679



Camel

2.0 mm : 1871 616

2.5 mm : 1872 616

WR: 1751 313

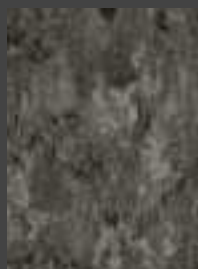


Azurite

2.0 mm : 1871 624

2.5 mm : 1872 624

WR: 1751 679



Smoke

2.0 mm : 1871 608

2.5 mm : 1872 608

WR: 1751 608

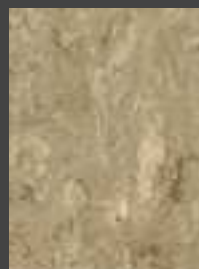


Taupe

2.0 mm : 1871 621

2.5 mm : 1872 621

WR: 1751 621

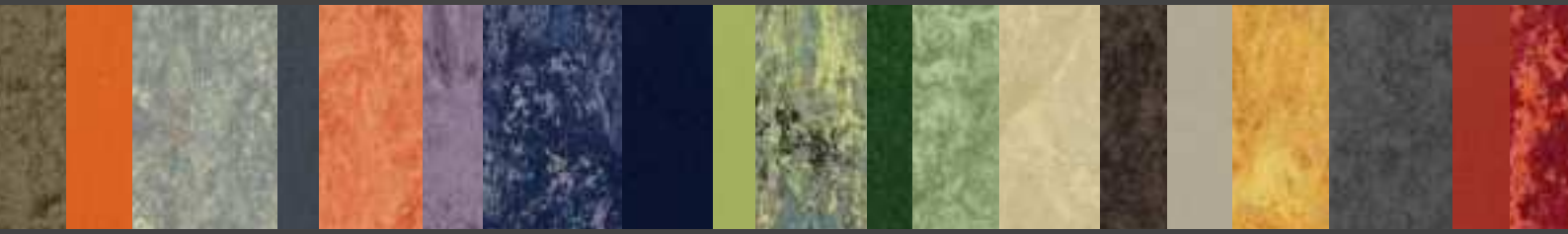


Silk

2.0 mm : 1871 625

2.5 mm : 1872 625

WR: 1751 625



The Linoleum xf design toolbox

When you are creating an interior design solution for a commercial area, you have to meet a lot of practical needs and demands. Yet the aesthetic and emotional values must be equally important. For you to be able to realize your vision, it is important to have good inspiration and help in the interior design process. That is why we created the Linoleum xf design toolbox. When using it there are three ways to go in – colour, pattern and trends – for an infinite number of combinations.

Colours

The use of colour is a great way to create emotions. When searching for the right colour set-up, it is important to have a wide selection to choose from. The Linoleum xf toolbox includes a dynamic and vibrant colour range of 68 references.

Patterns

To allow maximum scope for using patterns to create the desired energy, the Linoleum xf collection is based on four levels of pattern expression – from plain and soft to medium marbling and multicolour.

Trends

The Linoleum xf design collection is inspired by today's architectural trends, ensuring a versatile and contemporary design approach that imparts a positive energy to all kinds of commercial areas.

Inspirational trends

PLAYTIME



Bright colours are a source of life and expression

Today, the development of every product must encompass people's multiple facets, their many personalities, activities and roles. This vivid and fresh palette offers you the opportunity to customize your project and to dare to express yourself!

LOFT/VINTAGE



Scale of greys for an upgradeable architecture

Comfort is often synonymous with movement and simplicity. This implies openness and transparency, large spaces and neutral colours. With these subtle shades of neutral greys, it is easy to adapt your living spaces as your lifestyle evolves.



645 carmine



037 orange



695 absinthe



677 turquoise



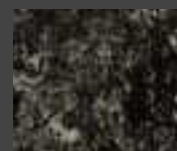
671 zinc



686 concrete

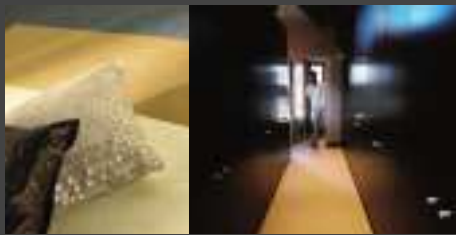


692 stone



610 charcoal

LUXURY



ENVIRONMENTAL INTELLIGENCE



SOFTNESS



Colours of seduction

Offering you moments of hedonistic pleasure in a multi-sensorial and colourful environment. Transforming the everyday into unique and surprising little moments. Black or violet, sunflower or chocolate? There is no limit to your self-expression. The idea of luxury is something very personal, in fact.

A green for everyone, for every project

Preserving nature and the environment will play an increasingly important role. In this search for protection, people need to get back to "mother nature", and want to be surrounded by natural products and living shades like greens and yellow-greens.

Sensory colours for a relaxing architecture

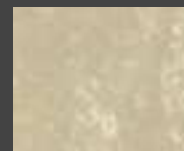
The floor is a meeting surface between human beings and architecture; it is a witness to life. Like a kind of cocoon, these soft and relaxing colours invite you to feel well and protected. In a constantly aggressive world we need to take the time for a pause.



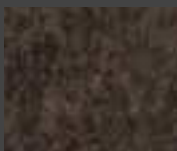
628 sunflower



750 olive



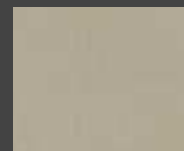
601 ivory



632 chocolate



050 green



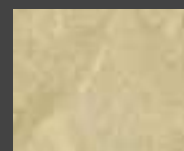
002 beige



049 purple



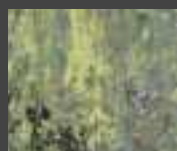
751 leaf



622 sand



098 black



150 anise mix



619 eggshell

Linoleum xf and xf welding rods – a surface revolution!

Linoleum xf is exactly what linoleum needed – a tough surface to protect and enhance a natural, renewable and beautiful product. It is a true surface revolution, with surface protection that gives superior resistance to abrasion and chemicals as well as easy cleaning and maintenance. It is accompanied by Linoleum xf welding rods that need no special treatment, yet resist all kinds of soiling and abrasion.

From beginning to end, Linoleum xf will give you all the advantages you could wish for:

- > Extremely tough surface – second only to diamond
- > Excellent resistance to abrasion, stains and chemicals
- > No initial wax or polish needed – no need to strip
- > Linoleum xf welding rods based on unique formula – for perfect joints with extreme scratch resistance and exceptional stain and chemical resistance
- > Easy cleaning and maintenance, 30% saving on maintenance costs
- > More than 50% saving on water, detergent and energy
- > Excellent life cycle cost

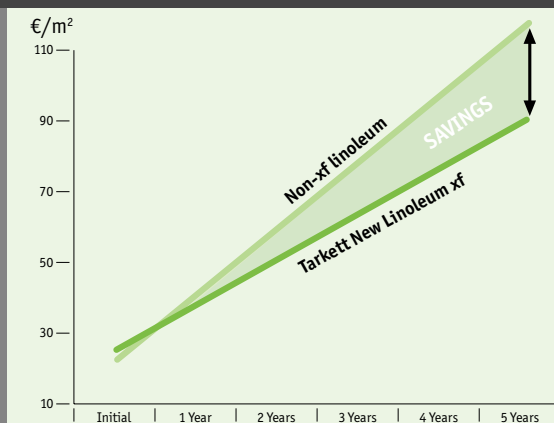
And we can prove it

Linoleum xf has been tested extensively at the WFK Institute in Germany, a leading international cleaning technology research center. Tests focused on our Linoleum xf versus ordinary linoleum. Results show that Linoleum xf

significantly outperforms ordinary linoleum in brightness and colour retention, in alkali resistance and in stain resistance to a series of substances, including acetone, coffee and betadine.

The cost of the initial investment and installation normally represents just a small part of a flooring's total life cycle cost. The rest is cleaning and maintenance. And that is why the reduced frequency and extent of cleaning and maintenance give Linoleum xf a very favourable life cycle cost. Compared with untreated linoleum flooring, payback on the extra investment comes within one year. For more information, please contact your Tarkett representative.

life Cycle Cost for Linoleum xf

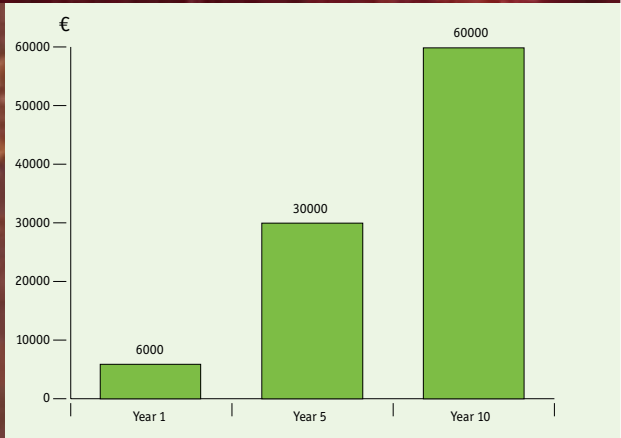


Linoleum xf construction

- ① Urethane polymerbased surface treatment with particle reinforcement
- ② Solid linoleum
- ③ Jute backing



cleaning costs – savings for 1000 m²



Cleaning and maintenance costs are reduced by 30%. Example: For an area of 1,000 m² over a period of 10 years, the savings will reach 60,000 euro.

Based upon Internal Tarkett LCC (Life Cycle Cost) calculations.



For acoustic needs:

Linoleum Silencio xf and Linoleum Acoustic xf

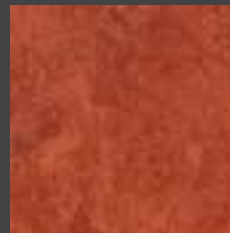
When acoustic properties are needed, Tarkett Linoleum Silencio xf and Tarkett Linoleum Acoustic xf are excellent choices. Their two-layer constructions include the xf treated linoleum, prebonded to an under layer. Tarkett Linoleum Silencio xf has a total thickness of 3.8 mm – including 2.5 mm linoleum with jute backing and 1.3 mm polyurethane foam under layer, which give a sound reduction of 17 dB. A 3.3 mm thickness version is also available on request.


Tarkett Linoleum Acoustic xf has a total thickness of 4 mm – including 2 mm linoleum with jute backing and 2 mm Elafono cork under layer, which give a sound reduction of 14 dB. The Elafono cork under layer is also available as a single product.

The unique construction and the manufacturing process, involving temperature and high pressure, give floorcoverings that minimises the effect of impact noise. These floorings also offer greater elasticity, thermal insulation and comfort under-foot that lead to an increased sense of well-being for the users.



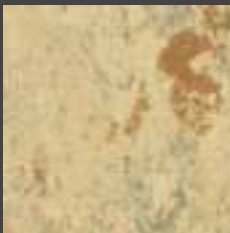
Silencio xf*



Terracotta
 1892 641
 WR: 1751 641




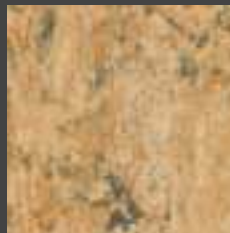
Absinthe
 1892 695
 WR: 1751 695




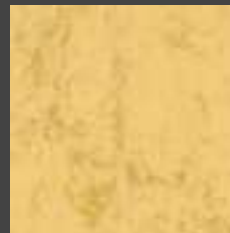
Sisal
 1892 611
 WR: 1751 313




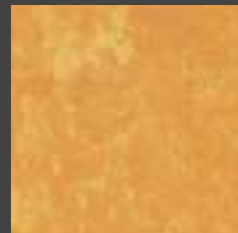
Coral
 1892 615
 WR: 1751 615




Camel
 1892 616
 WR: 1751 313



Corn
 1892 612
 WR: 1751 612



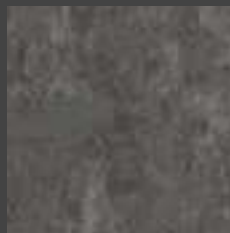
Sunflower
 1892 628
 WR: 1751 628



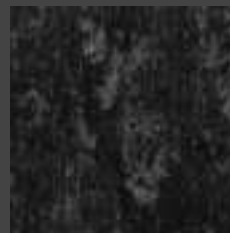
Ocean
 1892 665
 WR: 1751 665



Horizon
 1892 663
 WR: 1751 660



Steel
 1892 673
 WR: 1751 673



Slate
 1892 674
 WR: 1751 674



Platinum
 1892 684
 WR: 1751 684

* Other colors available on request

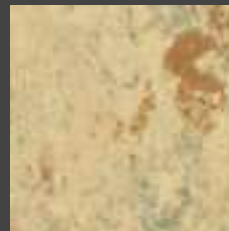
WR = Welding rods

For easy installation: Veneto Soluzione xf

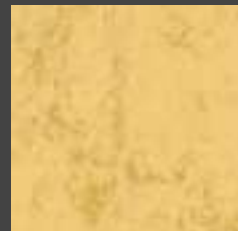
Relaying on the same strong surface layer qualities of Linoleum xf, Tarkett Veneto Soluzione comes with unique advantages – its modular format and its self-locking system. The benefit of this is simple, reliable and glue-free installation.

Veneto Soluzione is based on a three-layer construction consisting of the 2 mm linoleum surface, the 6.8 mm core and the 1.2 mm cork base layer, giving a total thickness of 10 mm. The cork backing reduces impact sound by 16dB.

Veneto Soluzione is available on request in two modular sizes: 915x305 mm and 305x305 mm. The colours and design are co-ordinated with the Veneto range.



Sisal
1881 611
1882 611



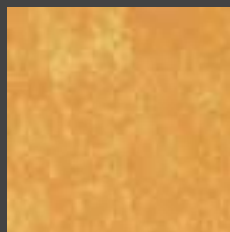
Corn
1881 612
1882 612



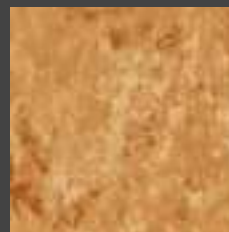
Coral
1881 615
1882 615



Camel
1881 616
1882 616



Sunflower
1881 628
1882 628



Copper
1881 634
1882 634



Terracotta
1881 641
1882 641



Leaf
1881 751
1882 751



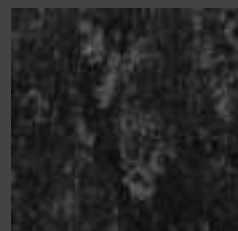
Ocean
1881 665
1882 665



Lagoon
1881 666
1882 666



Aluminium
1881 672
1882 672



Slate
1881 674
1882 674

Tarkett's Balanced Choice

Linoleum xf is part of Tarkett's choice of sustainable solutions, an integrated system that allows for balancing all the competing needs, while making choices that are truly sustainable and work together aesthetically.



Better materials

Where we can use renewable and recycled resources, we do

- Use of rapidly renewable raw materials (approx. 90%) – linseed oil, pine rosin, wood flour and jute



Resource stewardship

Using fewer resources is good for the environment and the bottom line

- Proprietary xf™ surface treatment reduces water, detergent and chemicals consumption by more than 50%

- Yearly decrease of overall factory waste (more than 30% in 2008 vs 2007)
- Raw material suppliers required to contribute to Tarkett's LCA (Life Cycle Analysis)
- Constant reduction of energy needed to produce one square metre (8.5% less kWh/mq in 2008 vs 2007)
- Manufactured in an ISO 14001 facility



People-friendly spaces

We make floors that help people work, play, shop, heal and learn better

- Low emission floorings in conformity with restrictive labels and regulations as

- Der Blaue Engel (Germany), Umweltzeichen (Austria), the Swan (Nordic), Geca (Australia) and Floor Score (USA).
- Cork provides underfoot comfort and acoustic properties, naturally
- Natural bacteriostatic properties



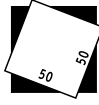
Reuse and recycle

We find ways to use more recycled content at the start and recycle more product at the end

- 10% of pre-consumer linoleum recycled into the product itself
- 100% recycling of production water



Linoleum xf



Manufactured by:
Tarkett SpA
05036 Narni
Italy
EN 548
Linoleum xf



Manufactured by:
Tarkett SpA
05036 Narni
Italy
EN 686
Linoleum Silencio xf



Manufactured by:
Tarkett SpA
05036 Narni
Italy
EN 687
Linoleum Acoustic xf

Technical data	Standards	Veneto xf			Veneto Acoustic xf	Veneto Tiles xf	Silencio xf	Veneto Soluzione xf	Allegro xf	Etrusco xf
		2.0 mm	2.5 mm	3.2 mm	4.0 mm	2.5 mm	3.8 mm	10 mm	2.5 mm	2.5 mm
Total thickness	EN 428	2.0 mm	2.5 mm	3.2 mm	4.0 mm	2.5 mm	3.8 mm	10 mm	2.5 mm	2.5 mm
Classification	EN 685	Classes: Domestic Commercial Light industrial UPEC	Classes: 23 34 42 U4P3E1/2C2	Classes: 23 34 42 U4P3E1/2C2	Classes: 23 33 41 U4P3E1/2C2	Classes: 23 34 42	Classes: 23 33 41 U4P3E1/2C2	Classes: 23 32 U4P3E1/2C2	Classes: 23 34 42 U4P3E1/2C2	Classes: 23 34 42 U4P3E1/2C2
Total weight	EN 430	ca. 2 400 g/m ²	ca. 3 000 g/m ²	ca. 3 900 g/m ²	ca. 4 500 g/m ²	ca. 3 150 g/m ²	ca. 3 350 g/m ²	ca. 8 600 g/m ²	ca. 3 000 g/m ²	ca. 3 000 g/m ²
Residual indentation	EN 433	ca. 0.07 mm	ca. 0.08 mm	ca. 0.10 mm	ca. 0.25 mm	ca. 0.08 mm	≤ 0.20	max. 0.12 mm	ca. 0.08 mm	ca. 0.08 mm
Castor chair	EN 425	Suitable for office chairs with castors type W (Norm EN 12529).								
Dimensional stability	EN 669					Variation ≤ 0.10 %				
Type of floorcovering	EN 686						Linoleum on a foam backing			
	EN 687				Linoleum on a corkment backing					
	EN 14085							Floor panels for loose laying		
Flexibility	EN 435 Method A	≤ 25 mm Ø	≤ 30 mm Ø	≤ 40 mm Ø	≤ 30 mm Ø	≤ 30 mm Ø	≤ 30 mm Ø		≤ 30 mm Ø	≤ 30 mm Ø
Fire classification	EN 13501-1	C _n s1	C _n s1	C _n s1	C _n s1	C _n s1	C _n s1	C _n s1	C _n s1	C _n s1
Cigarette burns	EN 1399	Resistant to cigarette burns.								
Static electrical propensity	EN 1815	< 2 kV	< 2 kV	< 2 kV	< 2 kV	< 2 kV	< 2 kV	< 2 kV	< 2 kV	< 2 kV
Impact sound reduction	ISO 140-8 EN ISO 717-2	5 dB	6 dB	9 dB	14 dB	6 dB	17 dB	16 dB	6 dB	6 dB
Impact sound reduction with Elafono*	ISO 140-8 EN ISO 717-2	14 dB	15 dB	15 dB					15 dB	15 dB
Light fastness	ISO 105-B02 Method 3	≥ 6	≥ 6	≥ 6	≥ 6	≥ 6	≥ 6	≥ 6	≥ 6	≥ 6
Chemical resistance	EN 423	Resistant to dilute acids, oils, fats and current solvents and alkalis.								
Thermal resistance	EN 12524	0.012 m ² K/W	0.015 m ² K/W	0.019 m ² K/W	0.040 m ² K/W	0.015 m ² K/W	0.040 m ² K/W	0.098 m ² K/W	0.015 m ² K/W	0.015 m ² K/W
Underfloor Heating		Suitable	Suitable	Suitable	Suitable	Suitable	Suitable	Suitable	Suitable	Suitable
Colours		50	50	6	on request	on request	12	12 on request	8	10
Form of delivery (rolls)	EN 426	20-30 lm x 2 m			ca. 20 lm x 2 m		ca. 20 lm x 2 m		20-30 lm x 2 m	
Form of delivery (tiles)	EN 427					50 x 50 cm		30.5 x 91.5 cm		
– Side length						deviation: ≤ 0.50 mm		or 30.5 x 30.5 cm		
– Squareness and straightness						deviation: ≤ 0.35 mm		accordingly		

DESCRIPTION EN 548

Linoleum homogeneous floor-covering on jute backing for rolls and synthetic backing for tiles.

Composition:

Wood and cork flour, linseed oil, natural resins, pigments.

The above information is subject to modifications for the benefit of further improvement (10/08).

To obtain the exact colour of the samples, it is recommended to expose them to sunlight for several hours in order to remove the normal yellowing effect due to the oxidation process.

Tarkett's instructions regarding installation, cleaning and maintenance should be observed. Please contact Tarkett at the address shown for these instructions.

* Elafono:

Description: one-layer under layer made of cork grain and a binding agent on jute backing.

Properties:
sound-reducing effect.
Available:
rolls of 20 to 30 lm x 2 m.
Thickness:
2.0 mm
Ref: 1861030

Also available:

Narnidur xf

- Linear marbled design
- 4 mm thickness designed to withstand heavy traffic
- Ideal for industrial applications
- 8 colours available on request
- Corresponding to 3.2 mm Veneto xf

INTELLIGENT FLOORING SOLUTIONS



SYSTEM

Providing not just a product, but a complete functional solution designed to fully meet customer needs.

SERVICE

Supporting customers from first consultation to product installation, and throughout the product's service life.

SAVINGS

Finding materials, construction and solutions that minimise maintenance requirements and achieve best life cycle costs.

STYLE & DESIGN

Contributing to atmosphere, state of mind and emotion, to efficiency and a sense of well-being.

SUSTAINABILITY & ENVIRONMENT

Taking the lead in promoting measures to help preserve a sustainable environment.

The Tarkett Group

- Sales Offices
- Production Sites
- Recycling Plants
- Training Centers



TARKETT SALES COMPANIES

www.tarkett-commercial.com

> **Australia:** Tarkett Australia Pty Ltd – Tel. +61 2 96 34 73 73 > **Austria:** Tarkett Holding GmbH, Niederlassung Wien – Tel. 01 47 88 062 > **Baltic States:** Tarkett SAS – Tel. +370 37 262 220 > **Belgium:** S.A. Tarkett NV – Tel. +32 16 35 98 80 > **China:** Tarkett Asia Pacific Limited Shanghai Representative Office – Tel. +86 (21) 60 95 68 38 > **Czech Republic:** Tarkett SAS, org. slozka – Tel. +420-271 001 602 > **Denmark:** Tarkett A/S – Tel. +45 43 90 60 11 > **Finland:** Tarkett Oy – Tel. +358 9 5406 5870 > **France:** Tarkett France – Tel. +33 1 41 20 42 49 > **Germany:** Tarkett Holding GmbH, Bereich Objekt – Tel. +49 6233 810 > **Greece:** Tarkett Monoprosopi Ltd – Tel. +30 210 6745 340 > **Hong Kong:** Tarkett Asia Pacific Ltd. – Tel. +852 2511 8716 > **Hungary:** Tarkett SAS – Tel. +36 1 437-8150 > **Italy:** Tarkett S.p.A. – Tel. +39 02 893 411 > **Luxembourg:** Tel. +352 949 211 8804 > **Middle East:** Tarkett Middle East – Tel. +961 1 51 3363/4 > **Netherlands:** Tarkett Nederland – Tel. +31 76 57 80 760 > **Norway:** Tarkett AS – Tel. +47 32 20 92 00 > **Poland:** Tarkett Wykładziny Sp. z o.o. – Tel. +48 22 639 31 66 > **Portugal:** Tarkett SA – Tel. +351 21 427 64 20 > **Russian Federation:** Tarkett Russia – Tel. +7 4 95 777 69 83 > **Slovakia:** Tarkett SAS – Tel. ++421 34 774 12 09 > **Singapore:** Tarkett Far East – Tel. +65 67 43 53 84 > **South East Europe:** Tarkett Trade d.o.o. – Tel. +381 21 7557 649 > (44) 569 12 21 > **Spain:** Tarkett Floors S.L – Tel. +34 91 358 00 35 > **Sweden:** Tarkett Sverige AB – Tel. +46 771 25 19 00 > **Switzerland:** Tarkett Holding GmbH, Bereich Objekt Schweiz – Tel. +41 043 233 79 24 > **Ukraine:** Tarkett UA – Tel. +380380 (44) 569 12 21 > **United Kingdom:** Tarkett Ltd – Tel. +44 (0) 1622 854 040 > **North America:** Johnsonite – Tel. +1 440 543 8916 > Tarkett Inc. USA – Tel. +1 713 869 5811 > **Tarkett International:** Tel. +49 6233 811 755 – Tel. +33 1 41 20 41 01