



Uniclass L442

Cl/SfB

	34	X	
--	----	---	--



SAPPHIRETM
balustrades

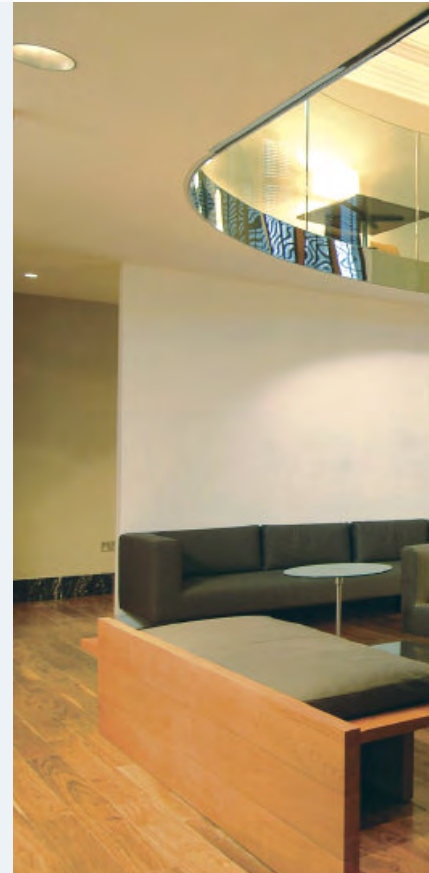
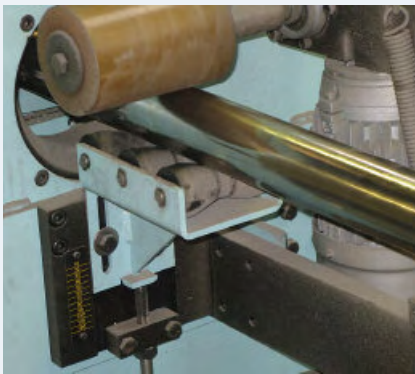
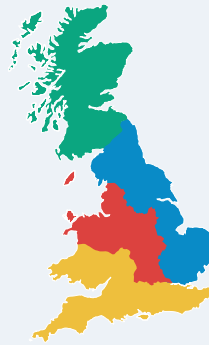


Handrail systems in stainless steel,
coated steel, glass, aluminium,
hardwood and brass



INTRODUCTION

Sapphire Systems was established in 1992, and is now trading as Sapphire Balustrades from four regional offices. Through consistent quality of workmanship, and reliable service, the business is continually expanding and diversifying. Our activities embrace a complete service including surveys, design, structural calculations, manufacture and installation.



Crystal structural glass with mirror polished trims

Our Mission

- To establish lasting team relationships with customers, specifiers and suppliers through providing balustrade solutions in a reliable, principled and honest manner.
- To develop a recognised brand of quality products and handrail systems which are attractive, fit for purpose and conform to legislation.
- To harness the potential and talent of both staff and subcontractors through training and by maintaining a safe, satisfying and rewarding work environment and ethos.



Onyx balustrade with glass infill panels



Customer Service

- Construction and refurbishment can involve tremendous pressures for contractors – they have to manage and co-ordinate sets of subcontractors and get projects completed successfully and on time. That is why we go the extra mile to make life easy for our customers.
- We ensure that contact with our customers is maintained throughout each project and after its completion, and we value feedback in view of further improvement in our service.

Design Solutions

- Design and fixing solutions are available to achieve the required loadings, whatever the construction or substrate.
- Detailed drawings are issued for approval, so everyone knows exactly what they are getting before we manufacture it.
- Sapphire technical advisors are always on hand to assist with any design questions.
- We comply with ISO14001:2004 and adopt the best available environmental practices. Our products have a long life and when no longer wanted can be dismantled and easily recycled.

Project Management Strategies

- Our resources are carefully managed by forward planning – labour for design, production and installation is allocated as soon as we accept an order.
- To ensure things are ready by the dates agreed, we set internal deadlines as jobs progress through each department of our business.
- We liaise with site management so there is a clear understanding of co-ordination between preceding and following trades.
- In conjunction with site management, we work to assess and eliminate risks and provide a safe working environment for all.
- We comply with health and safety standard OHSAS18001:1999.



Crystal balustrade and **Natura** handrail with satin polished stainless steel trim

Quality Assurance

We take great care to ensure that high standards of quality are maintained in all our activities.

- Our staff receive detailed guidance on procedures they are involved in.
- Regular team meetings provide forums for discussing improvements, maintaining consistency, resolving problems and preventing recurrence.
- Our Management System has been independently assessed to the ISO 9001:2000 quality standard by a UKAS accredited assessing body.
- All handrail systems come with a 12 year warranty for total peace of mind.

Product Specification Benefits

Our handrail systems reflect years of development and experience in providing specifiers with choice and flexibility whilst overcoming the problems they face, including:

- Complex layouts.
- Limitation of space.
- Stringent regulations.

All ranges incorporate a wide selection of fixings, connections and infills to suit.

Sapphire Balustrades offer handrail systems you can specify on any project with confidence and assurance.



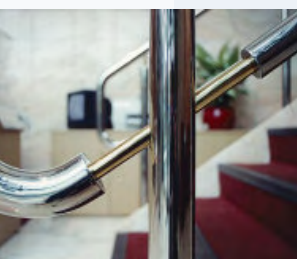
Coral 3kN/m balustrade with mesh infill panels



Coral balustrade with perforated panels to a ramp



Aluma Ascot balustrade



Platinum mirror polished stainless steel with gold plated fittings

Important Features

- Our handrail systems are largely interchangeable, allowing specifiers to combine different materials.
- Connections between parts are designed using engineering techniques in preference to visible welds.
- Standardisation of sizes and components yields the benefits of reduced costs and shorter lead times.
- Our twelve year warranty offers security against any possibility of design or manufacturing defects.
- Sales and technical staff are on hand to supply further literature or details and to give advice.
- Bespoke designs can be developed economically by incorporating special features or materials into one of our standard ranges.



- Balustrades are fabricated from mild steel for internal applications or stainless steel for external applications with a unique polyester powder coating process to achieve a high quality hardwearing surface finish.
- Excellent visual effects can be created through a wide selection of colours and metallic finishes, and there is flexibility to combine contrasting colours.
- A wide range of matching infills are available including mesh, perforated or glass panels, and vertical or horizontal midrails.
- Anti-bacterial coating is also available to help restrict the spread of germs in clinical or medical environments.



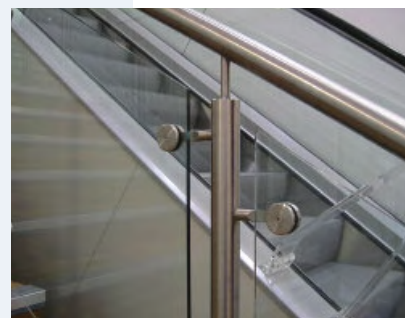
- Aluminium extrusions in a variety of shapes and sizes form the backbone of this exciting range.
- Superior resistance to corrosion makes these products ideal for areas of concern including external balconies and seafront locations.
- The handrail profile can be chosen from three standard shapes.
- Powder coated or anodized surface finishes are available options.



- This style combines the complementary finishes of mirror polished stainless steel handrails and balusters with brass connections and bracketry.
- Gold plating can be applied to the brass components for the ultimate effect.
- Ideal for entrance staircases and atriums in prestigious buildings where a stunning visual impact is required.



Opal balustrade with glass infill panels



Onyx with slimline lugs and glass



Coral balustrade with glass and solid sheet infill panels



Aluma Avon balustrade



Platinum balustrade with one midrail



Pearl bright polished stainless steel balustrade with three midrails



- All items are formed from stainless steel including various engineered and list components such as brackets, lugs and fixings.
- The good looks, neat details, practicality, versatility and durability make this one of our most popular ranges.
- Infill options include glass panels, straining wires and horizontal or vertical midrails.



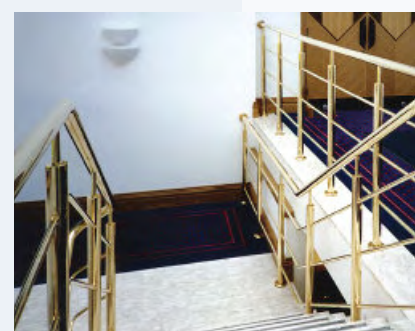
Onyx balustrade on helical staircase with curved, satin polished stainless steel perforated panels



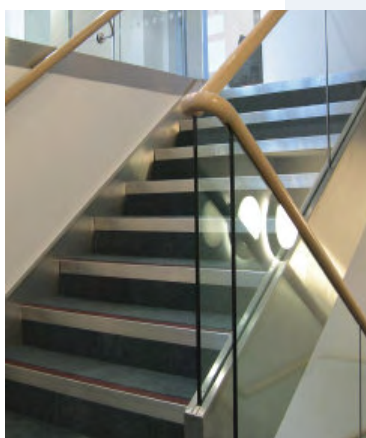
Ruby balustrade with two handrails



- Solid brass components and tubing form this range which is often used for upgrading historic or listed buildings to comply with current regulations.
- Regular polishing will maintain the outstanding lustre of the mirror polished brass.
- Bronzing is also available where a truly antique finish is required.



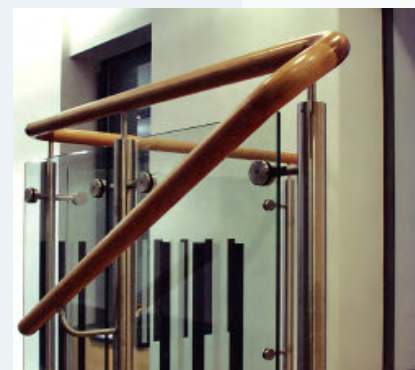
Ruby bright polished solid brass balustrade



Natura handrail on **Crystal** balustrade



- Quality hardwood handrails are used in this range to complement components and balustrades from other ranges.
- Unique high strength jointing methods mean that no core rail is required, which vastly improves the aesthetics.
- Specially formed curves mean a smooth flow of handrail is achieved even around corners and junctions.



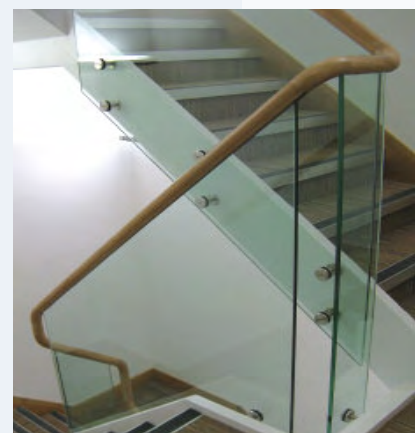
Natura handrail on **Onyx** balustrade with glass infill panels



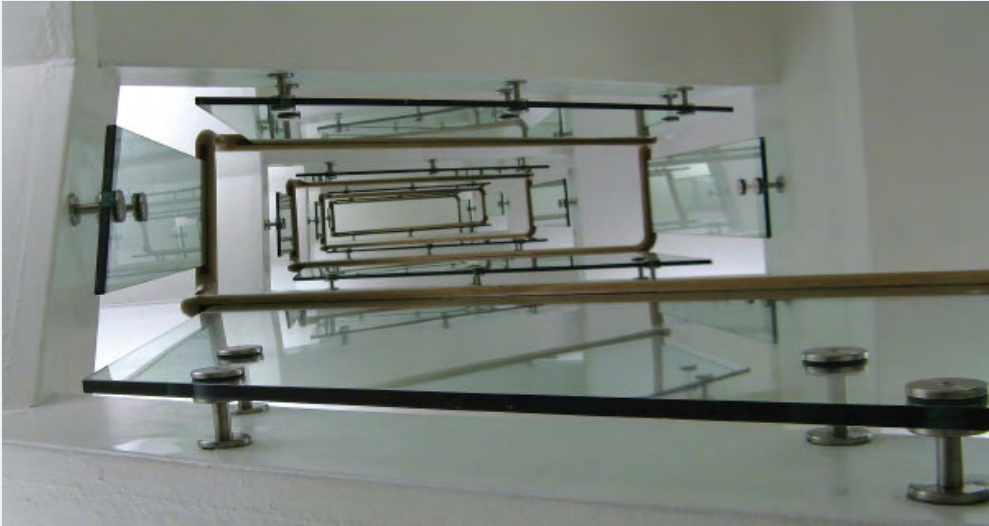
Crystal system with **Onyx** handrail



- Structural toughened glass panels with no vertical supports are the key to this style, which is becoming increasingly popular where an unimpeded view or a distinctive image is required.
- The comprehensive range of fixing solutions includes extruded aluminium channels, steel bracketry and visible stainless steel point fixings.
- Base fixings can be left exposed, covered in stainless steel or coated steel, or left for overcladding in hardwood, stonework or painted boards.
- Handrails can be either offset or slotted onto the glass, and can be in hardwood or stainless steel.

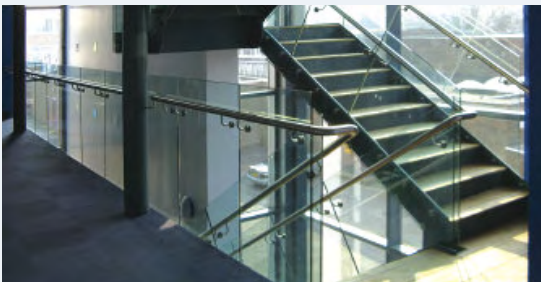


Crystal balustrade and slotted **Natura** handrail

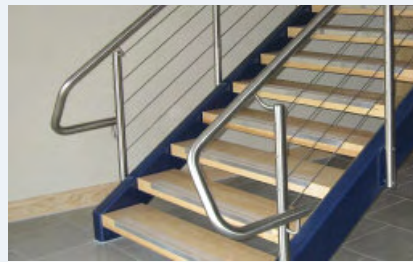


Crystal balustrade with a **Natura** handrail

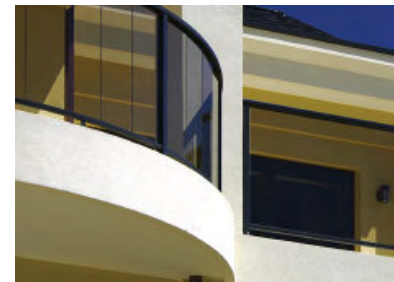
This mixture of structural glass with a **Natura** handrail gives an open feel which allows light to dominate the staircase.



Crystal balustrade with an offset handrail and increased height glass



Onyx balustrade and offset handrail with five straining wires



Aluma Avon balustrade to balconies



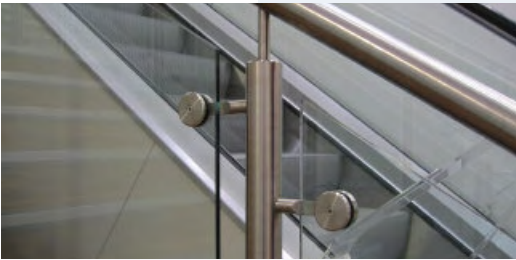
Crystal curved structural glass balustrade, **Onyx** satin polished handrail

The **Onyx** stainless steel handrail, offset from the wall on stainless steel brackets and slotted onto curved **Crystal** balustrade, gives a cool, sleek look in keeping with the surroundings.

The lack of uprights in these balconies allows an uninterrupted view over the city.



Structural glass balustrade with a slotted **Topaz** handrail



1.5kN/m **Onyx** balustrade combined with toughened glass infill panels



Natura handrail on the **Crystal** system



Opal balustrade combined with toughened glass infill panels

The **Crystal** system in this situation used two layers of glass laminated together thus eliminating the need for a handrail



Curved **Crystal** balustrade



The 1.5kN/m **Onyx** glass balustrade was chosen for its clean appearance and for its maintenance free finish in this busy retail environment



Stainless steel **Onyx** balustrade and toughened glass infill panels



Curved **Pearl** balustrade with three midrails



A pair of **Onyx** swing gates

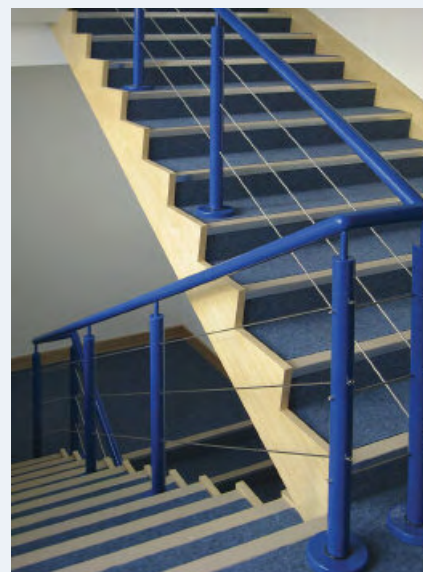


Aluma Avon balustrade powder coated to compliment the surroundings

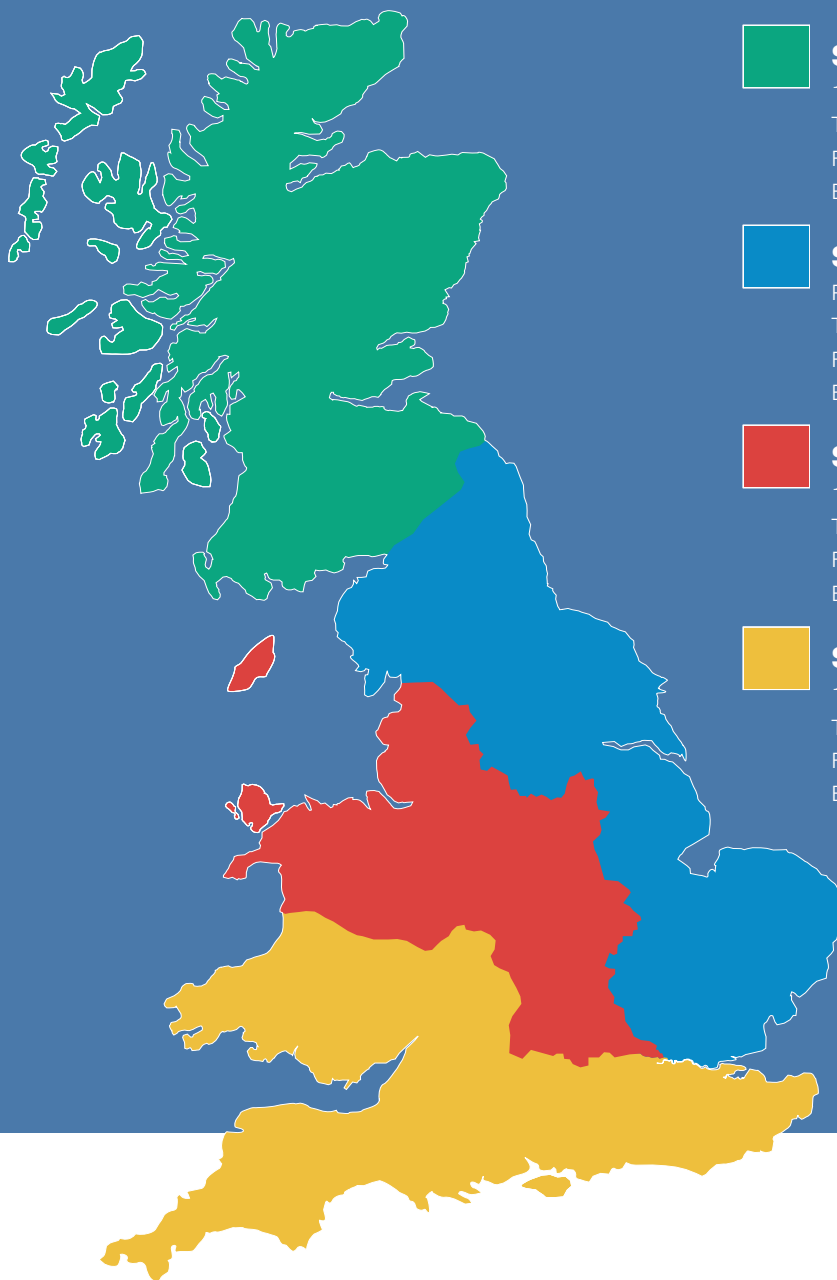
The **Opal** range is regularly chosen for its ability to compliment or contrast its surroundings in any environment



Opal balustrades with clear toughened glass infill panels



Opal polyester powder coated steel balustrade with three stainless steel strained wires in Basildon



Sapphire Scotland

1 Blackhouse Circle, Peterhead AB42 1BN
 T > 01779 476 089
 F > 01779 471 796
 E > sales@sapphirescotland.co.uk



Sapphire Eastern

Park Farm Lane, Nuthampstead, SG8 8LZ
 T > 01763 847 020
 F > 01763 847 030
 E > sales@sapphireeastern.com



Sapphire Midlands

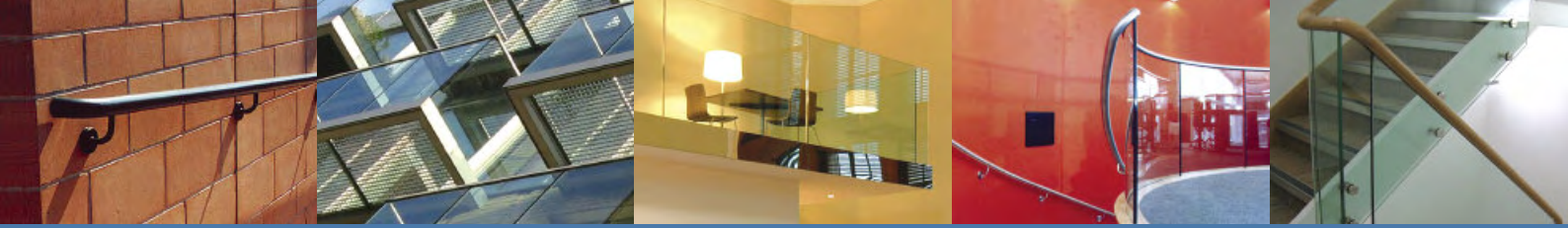
10 Thorpe Way, Banbury OX16 4SP
 T > 01295 265 500
 F > 01295 265 040
 E > sales@sapphiremidlands.com



Sapphire Southern

11 Arkwright Road, Reading, RG2 0LU
 T > 0118 986 5410
 F > 0118 986 5420
 E > sales@sapphiresouthern.com





Sapphire Scotland

1 Blackhouse Circle, Peterhead AB42 1BN

T > 01779 476 089

F > 01779 471 796

E > sales@sapphirescotland.co.uk

Sapphire Midlands

10 Thorpe Way, Banbury OX16 4SP

T > 01295 265 500

F > 01295 265 040

E > sales@sapphiremidlands.com

Sapphire Eastern

Park Farm Lane, Nuthampstead, SG8 8LZ

T > 01763 847 020

F > 01763 847 030

E > sales@sapphireeastern.com

Sapphire Southern

11 Arkwright Road, Reading, RG2 0LU

T > 0118 986 5410

F > 0118 986 5420

E > sales@sapphiresouthern.com

www.sapphirebalustrades.com