



Avon Barrier Company Ltd

**Avon
HIGH
SECURITY
TYRE KILLER
BARRIER**



Avon High Security Tyre Killer Barrier

The Avon High Security Tyre Killer Barrier is designed for use in high security high traffic applications.

The tyre killer barrier is a simple to install highly secure vehicle control barrier, ideally suited for approach entrances to banks, military installations, airports, docks, cash collection depots, government offices etc.

The tyre killer teeth retract below ground level when a signal is received from the push button or integrated access control unit providing safe access for authorised vehicles. When the vehicle has passed, the teeth return to the active position, ensuring total protection from unauthorised vehicle intrusion.

Tyre killer barriers may be used with any type of access control system. We recommend that the Tyre Killer is used in conjunction with a rising arm barrier and an underground inductive detector loop to act as a safety device to prevent the barrier operating when an authorised vehicle is stationary over the teeth.

Features

- Full electrical isolation and overload protection
- Manual operation facility with safety interlock
- Electro/Hydraulic Operation
- Height in raised position 475mm
- Fully galvanised and powder coated construction to provide maximum protection in extreme environments.

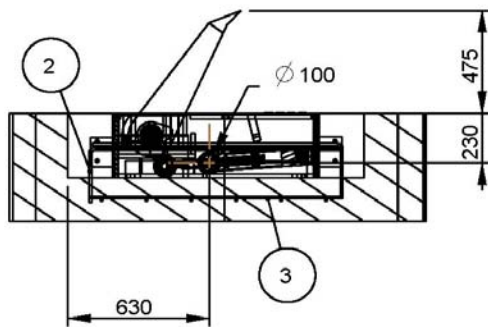
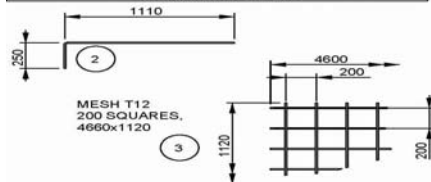
**Avon Barrier
Company Ltd**
191-195 South Liberty Lane
Ashton Vale Trading Estate
Bristol BS3 2TN UK

TEL +44 (0)117 953 5252
Fax +44 (0)117 953 5373
Email
sales@avon-barrier.com
www.avon-barrier.com

Avon High Security Tyre Killer Barrier

Technical Specification

3	T12	1	MESH	4660	1120
2	T12	4	11	1110	250
1	T12	4	00	4600	
ITEM	SIZE	QUANTITY	SHAPE	A	B



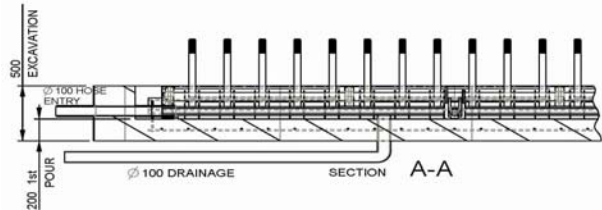
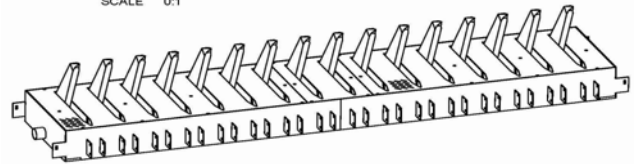
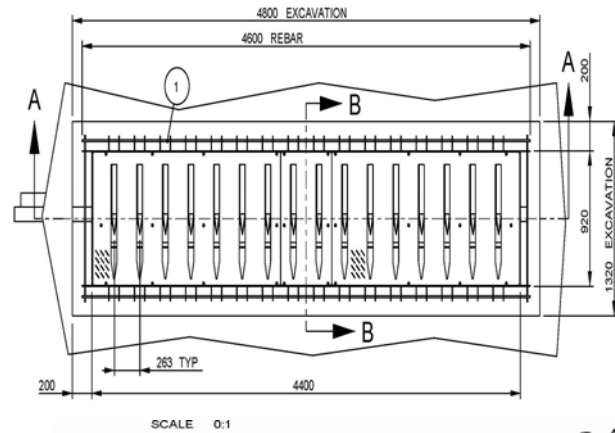
Avon High Security Tyre Killer Barrier

Options

The Tyre Killer Barrier comes with a push-button control as standard, however it can be customised to interface with a wide range of access control equipment to suit specific customer requirements (available as options) and any configuration including (but not limited to) inductive loop systems, card readers, communication equipment and manned guard panic systems can be accommodated. Where the Tyre Killer Barrier control point is remote from the installation, we strongly recommend the fitting of a recordable CCTV system, traffic lights and safety inductive loop systems

Options available

- Emergency buttons with lock down
- UPS backup for the electrical system
- Access control and Intercom systems
- Inductive loop systems
- Traffic lights and back-indication system

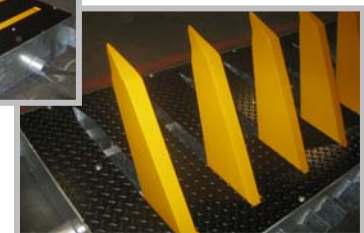


Technical Details

Physical Dimensions: To suit site requirements
HPU Cabinet -640/940mm W x 670mm D x 1300mmH

Power requirements:
 Basic Power requirements: 3-Phase 415V AC, 50Hz, 20 amps (other voltages are available) Control Voltage S.E.L.V 24 v

Construction: The framework is constructed from fully welded, heavy gauge, steel angle and box section and hi-tensile structural steel.



The Avon Barrier Company reserve the right to change or amend the specification of its products from time to time in furtherance of its policy of continued improvements.

REF ABC/Avon Tyre Killer Barrierr/Version 1.2.12.2010



Avon Barrier Company Ltd
 191-195 South Liberty Lane
 Ashton Vale Trading Estate Bristol BS3 2TN UK
 Tel +44 (0)117 9535 252
 Fax +44 (0)117 9535 373
 Email sales@avon-barrier.com
 Website www.avon-barrier.com