

# AV SECURITY

price list

April 07



[www.top-tec.co.uk](http://www.top-tec.co.uk)



TOP-TEC  
AV SECURITY

### LPCB Explained

- The Loss Prevention Certification Board (LPCB) is an independent testing house for fire & security products. Tests are numerous and are product dependant.
- Top-Tec approved products have been tested in accordance with test reference LPS 1214:Issue 2, categorised as 'Physical Protection Devices for Personal Computers and Projectors'. This means that they can withstand physical attack, thus simulating an alarm condition and time for security forces to react.
- Many insurance companies and police forces across the country recognise and recommend LPCB approved security products.



### Top-Tec LPCB Approved System

- The fully approved system is made up from three individual components (see opposite). The installation is only fully approved if all three elements are from the tested system. However, each element of the system has been effectively tested i.e. Security Cage, Mounting Pole and Ceiling Mounting Arrangement and you can therefore have confidence in their individual quality.
- This Top-Tec range is unique. No other manufacturer has succeeded in gaining this demanding LPCB attack insurance approval.



Desk Mounted

Why not fit the very best security from Europe's leading brand!

## Top-Tec LPCB Approved System

- The only LPCB and SBD approved projector security system
- Universal design available in four sizes to accommodate most projector models (only T-T 140/3 & 140/4 are approved)
- Moveable panels allow adjustment for easy installation and future proofing/re-use for replacement projectors.
- Ball/socket mounting assembly allows a huge range of adjustment for projector positioning.
- High quality grey and silver finish
- Locks can be supplied suited or mastered on request at a small extra charge.
- Can be ceiling or desk mounted.



## LPCB System Components

Code	Projector Size/Description	Price (Exc VAT)
T-T140/3	150-340* 150-255* 50-95*	<b>£240.00</b>
T-T140/4	150-340* 150-255* 50-120*	<b>£240.00</b>
T-T105-CU	Lockable Ceiling Unit	<b>£95.00</b>
T-T105-HDC050	500mm long heavy duty pole	<b>£16.22</b>
T-T105-HDC100	1000mm long heavy duty pole	<b>£32.44</b>
T-T105-HDC150	1500mm long heavy duty pole	<b>£48.66</b>

**Bundle packages available - see page 8**

Carriage costs for the above vary with quantity and delivery address. Free to UK Mainland for Retail Value over £600 excl VAT. Please call for details.

Dalen Limited, Valepits Road, Garretts Green, Birmingham B33 0TD  
Tel: 0121 783 3838 Fax: 0121 784 6348 security@top-tec.co.uk

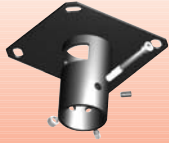


**TOP-TEC**  
AV SECURITY

### Ceiling Plate - Standard

#### T-T 105-CP1

Ceiling plate. Suitable for 50mm diameter poles.



Price Ex VAT  
**£27.20**

### Large Ceiling Plate

#### T-T 105-CP2

Large Top-Tec Ceiling Plate with holes at 240 x 240 mm centres.



Price Ex VAT  
**£40.35**

### Close Coupled Ceiling Plate

#### T-T 105-CCCP1

This ceiling plate eliminates the need for a pole, enabling projector enclosures or mounts to be attached directly to the ceiling.



Price Ex VAT  
**£27.20**

### Ceiling Plate with 180° pivot

#### T-T 105-CP6

Top-Tec Ceiling Plate with 180° pivot.



Price Ex VAT  
**£44.95**

### Ceiling Plate Lock Kit

#### T-T 105-CPLOCK

This lock covers the ceiling plate bolts to prevent plate removal (2 units per kit).



Price Ex VAT  
**£62.00**

### Ceiling Plate with Tilt

#### T-T 105-005

Secure ceiling mount that allows 45° movement from the vertical. This is restricted to one axis.



Price Ex VAT  
**£46.87**

### Locking Ceiling Plate

#### T-T 105-CP1-L

Ceiling plate with secure lockable cover for ceiling bolts & locking column safety pin.



Price Ex VAT  
**£78.20**

### Adjustable Ceiling Plate

#### T-T 105-CP1-UPL

Secure adjustable ceiling plate with lockable cover. Tested under attack conditions. Swivel assembly provides 360° rotation and 35° tilt.



Price Ex VAT  
**£88.20**

### LPCB Approved Ceiling Mount

#### T-T 105-CU

Lockable Ceiling Unit that forms part of the unique LPCB approved system.



Price Ex VAT  
**£95.00**

### Top-Tec Tube Mount

#### T-T 105-TM05

Tube Mount for use with 50 diameter columns and bars.

Other sizes available to order.



Price Ex VAT  
**£33.45**

### Top-Tec Girder Clamp

#### T-T 105-GC

Clamps to standard girders. Centre swivel provides a vertical drop from angled girders.



Price Ex VAT  
**£68.40**

### Ceiling Plate 90 Degree

#### T-T 105-CP90

This ceiling plate is used when the column needs to be secured to the side of a ceiling beam or support structure.



Price Ex VAT  
**£44.95**

### Top-Tec Column Coupler

#### T-T 105-CC (not shown)

Column Coupler. Not lockable.

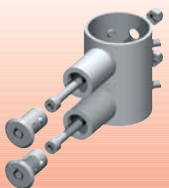
Price Ex VAT  
**£17.50**

Carriage  
**£5.00**

#### T-T 105-CC-L (as picture)

Lockable Column Coupler

Price Ex VAT  
**£56.25**



### Joint for Mounting Pole

#### T-T 105-UJ

Universal Joint to connect a T-T 105-CP1 to any pole. Allows for angled installations & prevents wrenching of the ceiling plate by thieves.



Price Ex VAT  
**£42.00**

### Uni-Joint Bolt Security Kit

#### T-T 105-UJBS-KIT

Security bolt kit for T-T 105-UJ.

Price Ex VAT  
**£52.50**

Carriage  
**£5.00**

#### T-T 105-BS-KIT

Single Bolt Kit

Price Ex VAT  
**£26.25**



Carriage costs for the above vary with quantity and delivery address. Free to UK Mainland for Retail Value over £600 excl VAT.

Please call for details.

# AV Security POLES & ACCESSORIES

## Wall Mounting Bracket to Drawing

### T-T 105-WMB

This secure wall mounted boom is available with throws of 600 to 1000mm. Made to Order.

Price Ex VAT  
**£110.00**



## Top-Tec Telescopic Boom up to 2.5m

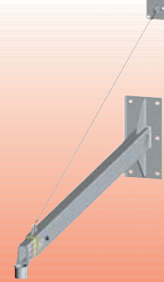
Wall mounted Telescopic Boom for adjustable provision away from the wall.

### T-T 105-TB20 1.4 - 2.0m

Price Ex VAT  
**£200.00**

### T-T 105-TB25 1.9 - 2.5m

Price Ex VAT  
**£230.00**



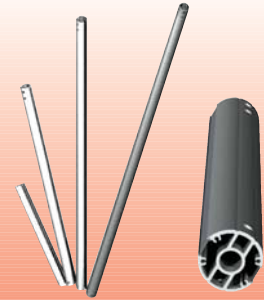
## Aluminium Extruded Poles

Elegant 50mm diameter aluminium pole with a satin anodized finish.

Has two cable ducts that allow data & power cables to be run separately.

Each duct has a removable plastic strip to hide the cables.

Code	Size	Price (Exc VAT)
T-T 105-AEC050	500mm	<b>£19.22</b>
T-T 105-AEC075	750mm	<b>£38.44</b>
T-T 105-AEC100	1000mm	<b>£57.66</b>
T-T 105-AEC150	1500mm	<b>£76.88</b>
T-T 105-AEC200	2000mm	<b>£96.10</b>
T-T 105-AEC300	3000mm	<b>£115.32</b>

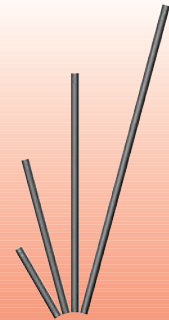


## Top-Tec Mounting Column

Mounting columns are available in various lengths.

Standard Duty Columns for use when the highest security installations are not required

Code	Size	Price (Exc VAT)
T-T 105-SDC050	500mm	<b>£10.10</b>
T-T 105-SDC075	750mm	<b>£15.15</b>
T-T 105-SDC100	1000mm	<b>£20.20</b>
T-T 105-SDC150	1500mm	<b>£30.30</b>
T-T 105-SDC200	2000mm	<b>£40.40</b>
T-T 105-SDC300	3000mm	<b>£60.60</b>

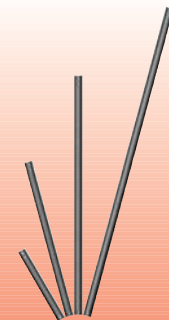


## LPCB Approved Top-Tec Column

These Heavy Duty Columns are also available in various lengths.

Heavy Duty Columns provide high-level security as an integral element of our LPCB approved system.

Code	Size	Price (Exc VAT)
T-T 105-HDC050	500mm	<b>£16.22</b>
T-T 105-HDC075	750mm	<b>£24.33</b>
T-T 105-HDC100	1000mm	<b>£32.44</b>
T-T 105-HDC150	1500mm	<b>£48.66</b>
T-T 105-HDC200	2000mm	<b>£64.88</b>
T-T 105-HDC300	3000mm	<b>£97.32</b>

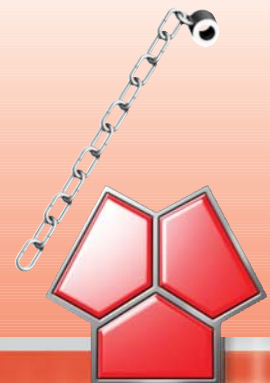


## Top-Tec Security Chain

Security chains are sized to suit the poles.

They feed through the cable port of a CP1, down the inside of the pole and are terminated with the secure safety bolt in the security cage or projector attachment.

Code	Size	Price (Exc VAT)
T-T 105-SC050	500mm	<b>£15.25</b>
T-T 105-SC075	750mm	<b>£16.86</b>
T-T 105-SC100	1000mm	<b>£18.50</b>
T-T 105-SC150	1500mm	<b>£21.75</b>
T-T 105-SC200	2000mm	<b>£25.00</b>
T-T 105-SC300	3000mm	<b>£32.00</b>
T-T 105-SC-UJ	Extension chain for use when a universal joint (see T-T 105-UJ) is included in the installation.	



Carriage costs for the above vary with quantity and delivery address. Free to UK Mainland for Retail Value over £600 excl VAT. Please call for details.

Dalen Limited, Valepits Road, Garretts Green, Birmingham B33 0TD  
Tel: 0121 783 3838 Fax: 0121 784 6348 security@top-tec.co.uk

### Top-Tec SPYDA

#### T-T AV SPYDA

The SPYDA has four strong mounting arms that provide fully adjustable length and fixing positions.

Mounting holes on any given projector vary enormously but the Spyda will cope with most sizes, heights and positions.

Price Ex VAT  
**£64.40**



### Secure Universal Mount

Open projector mount with a lockable cover that prevents access to the projector fixing screws. The swivel ball system provides a 35° tilt in all directions together with 360° rotation capability.

#### T-T 105-SUPM-1

Price Ex VAT  
**£125.00**

#### T-T 105-SUPM-2

Price Ex VAT  
**£125.00**



# GRYPA SECURITY SYSTEM

### Top-Tec GRYPA

#### T-T AV GRYPA

Use in two ways:

1. The GRYPA and cable combination is primarily an adjustable device that adds security to an existing installation.

2. Also available is the GRYPA with a Swivel Mount for direct pole mounting.

Price Ex VAT  
**£99.80** Exc cable



### GRYPA Swivel

#### T-T AV-GR-SW

The secure Grypa Swivel Mount provides 360° rotation and 35° tilt in all directions.

Only for use with the T-T AV GRYPA.

Price Ex VAT  
**£39.65**



### GRYPA Cables

This red security cable for T-T AV GRYPA adds extra security and is essential when retrofitting.



Code	Cable Length	Price (Exc VAT)
T-T 494-10-R	1.0m	<b>£30.00</b>
T-T 494-15-R	1.5m	<b>£32.50</b>
T-T 494-20-R	2.0m	<b>£35.00</b>
T-T 494-30-R	3.0m	<b>£40.00</b>
T-T 494-40-R	4.0m	<b>£45.00</b>
T-T 494-50-R	5.0m	<b>£50.00</b>
T-T 494-60-R	6.0m	<b>£55.00</b>

### Top-Tec GRYPA Mount Kit with Swivel Assembly

#### AVB-GY-H

Kit contains the Grypa bracket (T-T AV GRYPA) and Grypa Swivel Assembly (T-T AV-GR-SW)

Price Ex VAT  
**£139.45**



### Top-Tec GRYPA Mount Kit with Cable

The Kit includes the following items: Red 10mm Security Cable and AV-GRYPA Projector mount.

Code	Cable Length	Price (Exc VAT)
AVB-GY-10	1.0m	<b>£129.80</b>
AVB-GY-15	1.5m	<b>£132.30</b>
AVB-GY-20	2.0m	<b>£134.80</b>
AVB-GY-30	3.0m	<b>£139.80</b>
AVB-GY-40	4.0m	<b>£144.80</b>
AVB-GY-50	5.0m	<b>£149.80</b>
AVB-GY-60	6.0m	<b>£154.80</b>



Carriage costs for the above vary with quantity and delivery address. Free to UK Mainland for Retail Value over £600 excl VAT. Please call for details.

## Desk Mounted Bespoke Projector Cage

### T-T 101-S

Generic part number for a range of bespoke desk mounted projector cages.

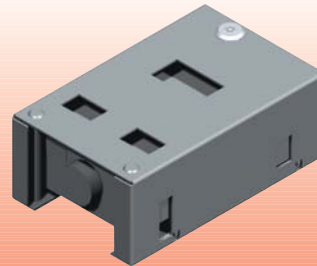
Extremely robust thief resistant design, well proven in the marketplace.

Contact us for exact part numbers for your projector model.

Very large units priced individually.

Price Ex VAT

**£160.00**



## Ceiling Mounted Bespoke Projector Cage

### T-T 101-SS

Generic part number for a range of bespoke ceiling mounted hanging projector cages.

Extremely robust thief resistant design, well proven in the marketplace.

Contact us for exact part numbers for your projector model.

Very large units priced individually.

Price Ex VAT

**£240.00**

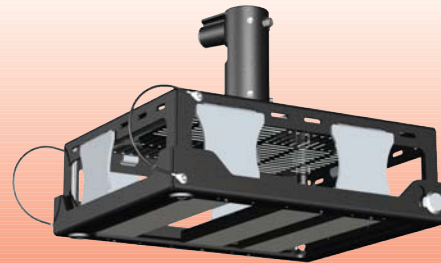


## LPCB Approved Universal Projector Cage

The Universal Projector Cage is integral to the LPCB approved projector security system.

Incorporating a fixed mounting plate that ensures repeatable removal and refit for filter cleaning.

Code	Width		Depth		Height	Price (Exc VAT)
	Min (long side)	Max	Min (short side)	Max		
T-T 140/3	150	309	150	250	50 - 75	<b>£240.00</b>
T-T 140/4	150	309	150	250	50 - 100	<b>£240.00</b>

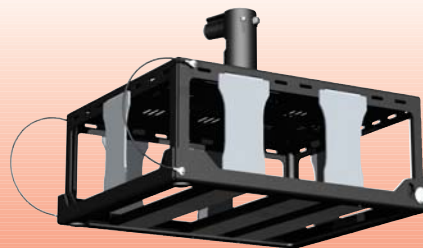


## Universal Projector Cage

Universal Projector Cage that is built to the same standard as the cages in the LPCB approved projector security system.

Incorporating a fixed mounting plate that ensures repeatable removal and refit for filter cleaning.

Code	Width		Depth		Height	Price (Exc VAT)
	Min (long side)	Max	Min (short side)	Max		
T-T 140/5	170	344	170	295	75 - 125	<b>£252.00</b>
T-T 140/6	200	386	200	345	85 - 150	<b>£295.00</b>



**TOP-TEC**  
AV SECURITY

Carriage costs for the above vary with quantity and delivery address. Free to UK Mainland for Retail Value over £600 excl VAT. Please call for details.

Dalen Limited, Valepits Road, Garretts Green, Birmingham B33 0TD  
Tel: 0121 783 3838 Fax: 0121 784 6348 security@top-tec.co.uk

### LPCB Total Security Kit with Cage

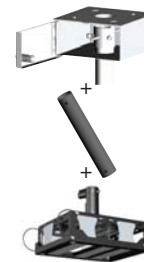
LPCB approved Heavy Duty Column, Ceiling Unit and 140/3 or 140/4, projector cage.

Select L3 bundles for projectors up to 340(w) x 255(d) x 95(h).

Select L4 bundles for projectors up to 340(w) x 255(d) x 120(h).

Dimensions in mm

Code	Pole Length	Price (Exc VAT)
AVB-L3-05	0.5m	<b>£335.00</b>
AVB-L3-10	1.0m	<b>£350.00</b>
AVB-L3-15	1.5m	<b>£365.00</b>
AVB-L3-20	2.0m	<b>£380.00</b>
AVB-L4-05	0.5m	<b>£335.00</b>
AVB-L4-10	1.0m	<b>£350.00</b>
AVB-L4-15	1.5m	<b>£365.00</b>
AVB-L4-20	2.0m	<b>£380.00</b>



### Security Kit with T-T 140/3 or T-T 140/4 Cage

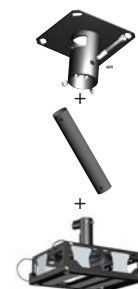
Standard Ceiling plate, Standard Duty Column and 140/3 or 140/4, projector cage.

Select C3 bundles for projectors up to 340(w) x 255(d) x 95(h).

Select C4 bundles for projectors up to 340(w) x 255(d) x 120(h).

Dimensions in mm

Code	Pole Length	Price (Exc VAT)
AVB-C3-05	0.5m	<b>£275.00</b>
AVB-C3-10	1.0m	<b>£285.00</b>
AVB-C3-15	1.5m	<b>£295.00</b>
AVB-C3-20	2.0m	<b>£305.00</b>
AVB-C4-05	0.5m	<b>£275.00</b>
AVB-C4-10	1.0m	<b>£285.00</b>
AVB-C4-15	1.5m	<b>£295.00</b>
AVB-C4-20	2.0m	<b>£305.00</b>



### SUPM1 or SUPM2 Projector Mounting Kit

Standard Ceiling plate, Standard Duty Column and Secure Universal Projector Mount -1 or 2.

Select M1 bundles for projectors up to 226(w) x 296(d).

Select M2 bundles for projectors up to 276(w) x 296(d).

Dimensions in mm

Code	Pole Length	Price (Exc VAT)
AVB-M1-05	0.5m	<b>£150.00</b>
AVB-M1-10	1.0m	<b>£155.00</b>
AVB-M1-15	1.5m	<b>£165.00</b>
AVB-M1-20	2.0m	<b>£175.00</b>
AVB-M2-05	0.5m	<b>£150.00</b>
AVB-M2-10	1.0m	<b>£155.00</b>
AVB-M2-15	1.5m	<b>£165.00</b>
AVB-M2-20	2.0m	<b>£175.00</b>

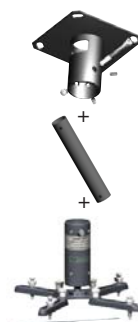


### Top-Tec SPYDA Mount Kit

Standard Ceiling plate, Standard Duty Column and AV-SPYDA mount.

Code	Size	Price (Exc VAT)
AVB-SY-05	0.5m	<b>£85.00</b>
AVB-SY-10	1.0m	<b>£90.00</b>
AVB-SY-15	1.5m	<b>£100.00</b>
AVB-SY-20	2.0m	<b>£110.00</b>

Model	Examples of hole centre options	
	Maximum mm	Minimum mm
T-T Spyda	288 x 75	95 x 95
	250 x 200	
	255 x 225	



### Top-Tec GRYPA Mount Kit with Cable - See page 6

Carriage costs for the above vary with quantity and delivery address. Free to UK Mainland for Retail Value over £600 excl VAT. Please call for details.

## MEDIA CAGES & CABINETS

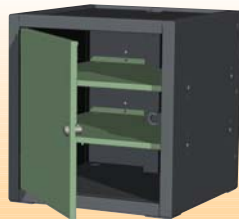
### Static Media Secure Cabinet

#### T-T 554 CAB02

External sizes: 600mm wide x 600mm deep x 730mm high.

Internal: 510mm wide x 550mm deep x 540mm high.

Price Ex VAT  
**£599.00**



There are two shelves to split the available space into 3.

### Mobile Media Secure Cabinet

#### T-T 554 CAB01

External sizes: 600mm wide x 600mm deep x 730mm high (without castors).

Internal: 510mm wide x 550mm deep x 540mm high.

There are two shelves to split the available space into 3.

Price Ex VAT  
**£599.00**



### Mobile Secure Cabinet & Projector

#### T-T 554 CAB03

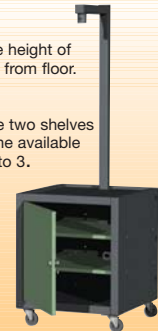
External sizes: 600mm wide x 600mm deep x 730mm high (without castors).

Internal: 510mm wide x 550mm deep x 540mm high.

Price Ex VAT  
**£699.00**

Max pole height of 1950mm from floor.

There are two shelves to split the available space into 3.



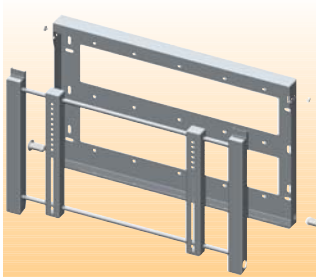
## LCD/PLASMA MONITOR MOUNTS

### Universal Plasma Bracket

Secure Plasma Mounting Bracket. With forward tilt adjustment to 6°.

**T-T 485-Y01** plasmas 23" - 37"  
Price Ex VAT  
**£155.00**

**T-T 485-Y02** plasmas 37" - 60"  
Price Ex VAT  
**£175.00**



### Universal Monitor Bracket

#### T-T 485-U-3

Desk mounted Universal Secure LCD monitor mount with tilt, swivel and height adjustments. Suits 75mm and 100mm square VESA mounts

Price Ex VAT  
**£129.00**



### Mount with Focal Length Adjustment

#### T-T 485-U-4

Desk mounted Universal Secure LCD monitor mount with tilt, swivel, height and focal length adjustments. Suits 75mm and 100mm square VESA mounts.

Price Ex VAT  
**£209.00**

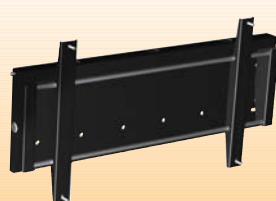


### Universal Plasma Bracket

Secure Plasma Mounting Bracket. With forward tilt adjustment up to 10°.

**T-T 485-X01** plasmas 23" - 37"  
Price Ex VAT  
**£155.00**

**T-T 485-X02** plasmas 37" - 60"  
Price Ex VAT  
**£175.00**

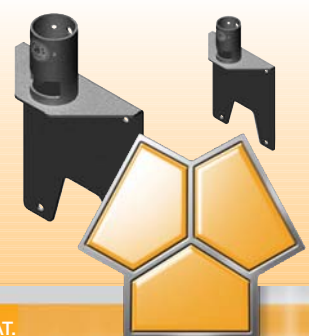


### Plasma Bracket Adaptor

Plasma bracket adaptor mounts for use with single pole installation.

**T-T 105-PS1** suits Y01 & X01  
Price Ex VAT  
**£48.80**

**T-T 105-PS2** suits Y02 & X02  
Price Ex VAT  
**£68.80**



Carriage costs for the above vary with quantity and delivery address. Free to UK Mainland for Retail Value over £600 excl VAT. Please call for details.

Dalen Limited, Valepits Road, Garretts Green, Birmingham B33 0TD  
Tel: 0121 783 3838 Fax: 0121 784 6348 security@top-tec.co.uk

# NEPTUNE 19" UNIVERSAL SECURE

**“A revolutionary approach to storing both ICT and multi-media devices”**



## Key Features

- Height adjustable shelves and stop brackets
- Secures both rack and non-rack mounted equipment
- Use as a lectern or fit inside an existing lectern
- Internal cable management
- High quality security locks
- Can be attached to wall or floor
- Available from 6 to 48 U's
- Capability to attach monitor brackets and projector mounts to top surface



Patent Pending

Adjustable height, width & depth



Rear Security Bar



Anti-Tamper Back Panel

## Top-Tec Neptune Cabinets

The Neptune rack system has been designed to store from 6 to 48 U's and has a wide range of optional extras. This 19" universal secure rack system symbolises a revolutionary approach to storing both ICT and multi-media devices with rack mounted equipment. Also, available to fit all Neptune cabinets, are easy to use lockable back panels which help prevent unwanted or accidental tampering of equipment without impeding user access.

## Design

Developed in conjunction with industry specialists and end users, the Neptune cabinet's ground breaking design more than exceeds the expectations set by traditional 19" rack systems. Height adjustable shelves are complimented by fully adjustable side and back stop brackets. This gives Neptune cabinet users the distinct advantage of being able to safely secure both rack mountable equipment and other forms of ICT, AV and multi-media equipment, including computers, DVD players, amplifiers, PDU's, blade servers and projectors.

## Main Unit

Code	Description	Overall Size (mm)			Shelves Inc. in Rack	Price (Ex VAT)	Carriage
		W	D	H			
T-T Neptune- 06	Adjustable Secure 19" Rack- 06 U	523	545	444	3	£400.00	£20.00
T-T Neptune- 08	Adjustable Secure 19" Rack- 08 U	523	545	533	3	£440.00	£20.00
T-T Neptune- 12	Adjustable Secure 19" Rack- 12 U	523	545	711	5	£520.00	£20.00
T-T Neptune- 14	Adjustable Secure 19" Rack- 14 U	523	545	800	5	£560.00	£20.00
T-T Neptune- 16	Adjustable Secure 19" Rack- 16 U	523	545	889	6	£630.00	£30.00
T-T Neptune- 20	Adjustable Secure 19" Rack- 20 U	523	545	1067	7	£770.00	£45.00
T-T Neptune- 24	Adjustable Secure 19" Rack- 24 U	523	545	1245	9	£910.00	£60.00
T-T Neptune- 28	Adjustable Secure 19" Rack- 28 U	523	545	1506	10	£1,180.00	£75.00
T-T Neptune- 32	Adjustable Secure 19" Rack- 32 U	523	545	1684	11	£1,320.00	£90.00
T-T Neptune- 36	Adjustable Secure 19" Rack- 36 U	523	545	1862	13	£1,460.00	£105.00
T-T Neptune- 40	Adjustable Secure 19" Rack- 40 U	523	545	2040	14	£1,600.00	£120.00
T-T Neptune- 44	Adjustable Secure 19" Rack- 44 U	523	545	2218	15	£1,740.00	£135.00
T-T Neptune- 48	Adjustable Secure 19" Rack- 48 U	523	545	2396	17	£1,880.00	£150.00

## Optional Removeable Back Panel

Code	Price (Ex VAT)
T-T Nep-Back- 06	£72.00
T-T Nep-Back- 08	£76.00
T-T Nep-Back- 12	£84.00
T-T Nep-Back- 14	£88.00
T-T Nep-Back- 16	£92.00
T-T Nep-Back- 20	£100.00
T-T Nep-Back- 24	£108.00
T-T Nep-Back- 28	£116.00
T-T Nep-Back- 32	£124.00
T-T Nep-Back- 36	£132.00
T-T Nep-Back- 40	£140.00
T-T Nep-Back- 44	£148.00
T-T Nep-Back- 48	£156.00

Carriage as marked UK Mainland. Large orders /other destinations POA.

[www.top-tec.co.uk](http://www.top-tec.co.uk)

E.&O.E.

### Flexibility

With models available to store from 6 to 48 U's, the Neptune cabinet has been created for use in a number of areas, be it traditional IT and multi-media outlets such as clubs, cinemas and server rooms, or to meet the growing need for rack systems that are able to act as lecterns and media desks.

### Anti-Theft

The height of the front door aperture can be selected to suit individual access requirements while still securing all the equipment, standard aperture is 50% of the usable height.

The Neptune cabinet incorporates high quality locks and a rear security bar that doubles as a cable management device.

For increased security and safety, a lockable back panel is also available, to help prevent unwanted tampering of equipment.

## ACCESSORIES

### Extractor Fan

#### T-T Nep-Fan

12 v Ventilation fan and transformer for Neptune cabinet 60mm<sup>2</sup> x 50mm (d).

Price Ex VAT  
**£87.95**



### Swivel Castors

#### T-T Nep-Castor

Set of four 5" diameter swivel castors, increases height of rack by 150mm.

Price Ex VAT  
**£75.00**

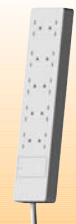


### Extension Lead

#### T-T Nep-Ext10

10 Gang power socket.

Price Ex VAT  
**£52.00**



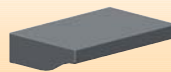
### Top Extension

#### T-T Nep-Top

Top surface extension for Neptune cabinet. 350mm (w) x 530mm (d).

\*Maximum two per unit.

Price Ex VAT  
**£48.60** EA



### Spare Side-Stop

#### T-T Nep-S-Stop

Additional side-stop bracket for Nep-shelf prevents sideward movement within the cabinet.

Price Ex VAT  
**£14.00**

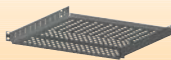


### Additional Internal Shelf

#### T-T Nep-Shelf

Additional standard shelf including two stops.

Price Ex VAT  
**£48.60**



### Spare Back-Stop

#### T-T Nep-B-Stop

Additional back-stop bracket for Nep-shelf prevents backward movement within the cabinet.

Price Ex VAT  
**£14.00**



### Front Blank Plate

Front blanking plates to conceal empty U's

#### T-T Nep-Blank-1u

Price Ex VAT  
**£9.95**

#### T-T Nep-Blank-2u

Price Ex VAT  
**£14.95**



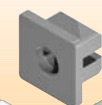
### Captive Square Nut

#### T-T Nep-Shelf Fix

Set of 20 captive nuts with screws to enable mounting of additional shelves and rack equipment.

Price Ex VAT  
**£9.80**

Kit of 20 inserts & 20 screws



T-T Neptune- 6



T-T Neptune- 14



T-T Neptune- 48

### Patent Pending

Carriage costs for the above vary with quantity and delivery address. Free to UK Mainland for Retail Value over £600 excl VAT. Please call for details.

**Dalen Limited**, Valepits Road, Garretts Green, Birmingham B33 0TD  
Tel: 0121 783 3838 Fax: 0121 784 6348 security@top-tec.co.uk



## More products from the Top-Tec Security range:

### ICT Security

- Tower, desktop, & server enclosures
- Laptop brackets & desk mounted enclosures
- Flat panel brackets and mounts
- Laptop night-safes
- Secure cabling
- Rack cabinets

### Secure Desking Solutions

- Cantilever & four-leg designs
- V desks - multi-function
- Sliding top desks
- Electronic height-adjustable desks
- Corner desks, drawer storage solutions

### Audio-Visual Security

- Projector enclosures
- Secure ceiling units, poles and brackets
- Secure media trolleys
- Rack cabinets



## Products from the Top-Tec Industrial range:

### Safety

- Access platforms
- Folding access platforms
- Safety harnesses
- Spill kits

### Storage

- Self-tipping skips
- Handy bins
- Tidy bins
- Drum storage
- Drum handlers
- Sump pallets

### Handling

- Pallet trucks
- Hand carts
- Tipping pallets

## Your Guarantee of Quality

- Established as Europe's largest range of physical entrapments
- Widest range of LPS 1214 category I & II approved security devices
- Next day delivery for in-stock items
- Bespoke design service available
- Nationwide fitting service
- E-commerce website



Quality Systems Certificate No. 276  
Assessed to ISO 9002



Police Preferred Specification



**Dalen Limited**, Valepits Road, Garretts Green, Birmingham B33 0TD  
Tel: 0121 783 3838 Fax: 0121 784 6348 security@top-tec.co.uk

[www.top-tec.co.uk](http://www.top-tec.co.uk)