

You'll never know its there until you need it!

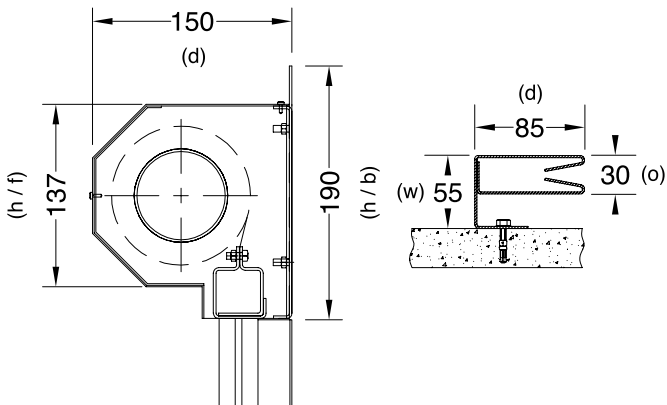
The ViiFire Door is a compact fully automatic motorised roller system with a high temperature stainless steel reinforced curtain, tested up to 1000°C, concealed in a strong steel casing above the doorway or opening. It remains hidden but ready to work – in the event of a fire. It is easy for a competent person to install and the first and only 'plug and play' system.

The ViiFire Door can be either a main alarm controlled or a standalone Fire Curtain safety system, replacing traditional fire doors in corridors, lobbies or 'compartments'. The system only deploys in the event of a fire, total power or system failure (as required by regulation) or manual activation. The system specification must be approved by an authorised person ie Building Control.

Design Specification

Headbox:	Back	190mm	(h/b)
	Front	137 mm	(h/f)
	Depth	150mm	(d)

Side Guides:	Width	55mm	(w)
	Depth	85mm	(d)
	Opening	30mm	(o)



The design caters for a standard range of opening sizes from 900mm x 2000mm to 2500mm x 2300mm. Special sizes can be accommodated up to a maximum size of 3000mm x 3000mm.

The descent speed is factory set to between 0.06 m/s to 0.15 m/s to comply with BS PAS 121:2007 (5.3a).

The system is designed as 'plug and play'. This means that all ancillary equipment is provided with a labeled plug that plugs into a corresponding labeled socket.

The system contains its own dedicated, self-monitoring battery back-up & emergency power system.

This system comes with an aesthetically stylish mini control panel as standard. Only the battery and control fuses are on the main control box.

- ✓ **Mandatory Safety Functions**
- ✓ **Total Power Failure Gravity Fail Safe**
- ✓ **Total Wiring Corruption Gravity Fail Safe**
- ✓ **Total Control Equipment Gravity Fail Safe**
- ✓ **Safe Controlled Operating Speeds**

Accessories

Emergency Retract *

Touch-switch, push-switch, pressure mat or motion sensor
Emergency retract works for 20 cycles during 2 hours

*Emergency Retract buttons are not supplied as standard. Please ensure you check with the appropriate authority if emergency retract is required.

Two-message voice warning device.

Message 1 – Curtain descending

Message 2 – Curtain obstruction

Light beacon

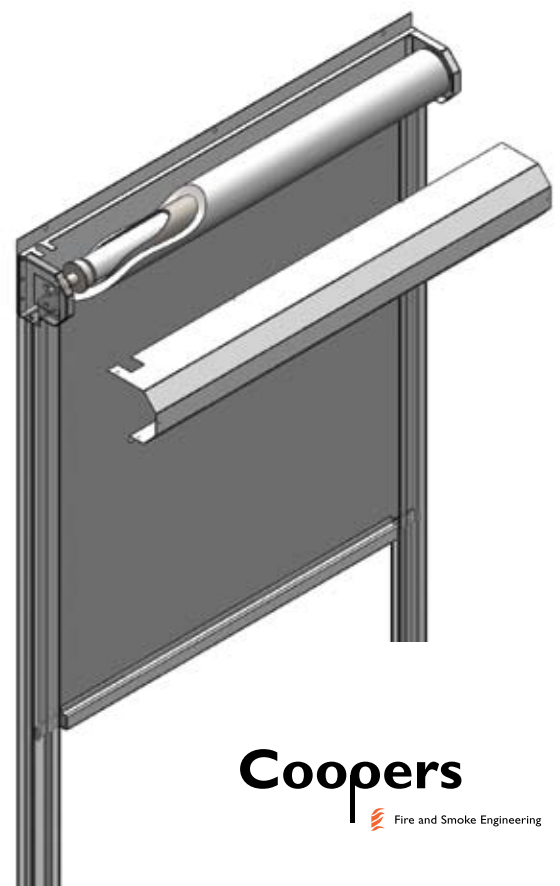
Red Light – Flashing (not strobe) to indicate that the unit is operating.

Bump Stop (on bottom bar): A pressure sensitive strip on the bottom bar that senses the obstruction, causing the curtain to retract, pause, play the obstruction message, then descend again. This sequence is repeated three times in a row before finally descending regardless of obstruction.

Obstruction Beam: If an object is blocking the ViiFire Door, then after 10 seconds the voice warning device activates. This is a warning device only. The curtain will descend in the event of activation.

Fire Alarm input: The system is activated from main system or heat, smoke or thermal fuse alarm inputs. Detectors can be wired in series to extend cover.

Should you have any queries please contact ViiFire Technical for FREE on: 0800 783 6628



Size and weight chart

Clear opening width (mm): (Overall width):	900 (1066)	1000 (1166)	1500 (1666)	2000 (2166)	2500 (2666)
Clear opening height (mm): (Overall Height):	2000 (2190)	2000 (2190)	2000 (2190)	2000 (2190)	2000 (2190)
Product code:	VFD9/20	VFD10/20	VFD15/20	VFD20/20	VFD25/20
Weight (approx) (Kg):	29.7	31.0	37.4	43.8	52.1
Clear opening height (mm): (Overall Height):	2300 (2490)	2300 (2490)	2300 (2490)	2300 (2490)	2300 (2490)
Product code:	VFD9/23	VFD10/23	VFD15/23	VFD20/23	VFD25/23
Weight (approx) (Kg):	30.1	31.4	37.8	44.3	52.6

(Max size available: 3000 x 3000)

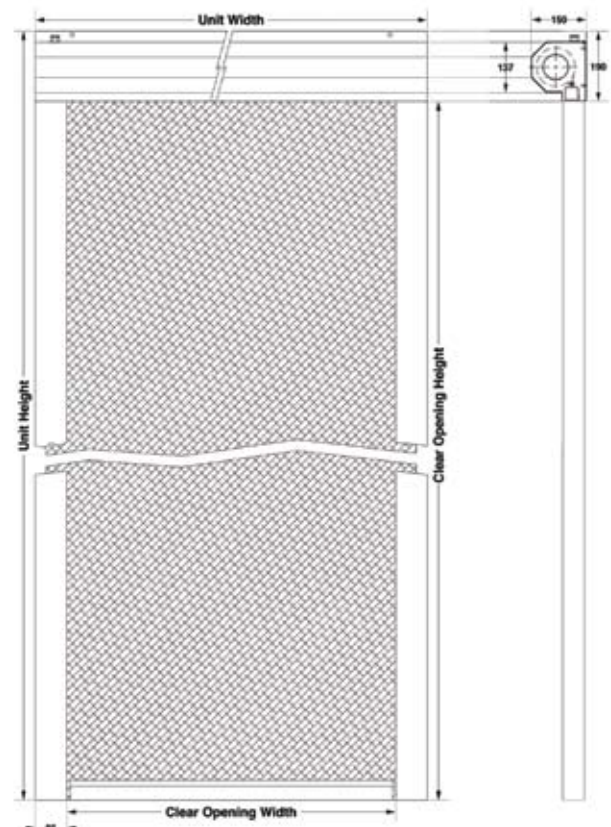
Measuring and Ordering

1. Check all walls and surfaces are suitably fire rated.
2. Ensure all fittings, if different to those supplied, are suitably fire and load rated. (Coopers does not accept any responsibility if fittings other than those supplied are used. Please contact our Technical Department if you are unsure.)
3. Ensure there are no obstructions e.g. pipes, cables, tiles etc. Measure the width of the opening at the top, middle and bottom. Use the maximum dimension as your clear opening width.
4. Measure the height of the opening on the left, middle and right. Use the maximum dimension as your clear opening height.
5. Select the model with the next largest appropriate opening size from the Size & Weights chart.
6. Each fire curtain is supplied with a 5 metre pre-wired, fire rated motor cable to the control panel, a 2 metre mains power lead with a standard plug to fit a standard fused unswitched socket and a 5 metre two core alarm cable. Any mains electrical connections or modifications must only be carried out by a qualified electrician.
7. Fire curtains will be supplied with the motor cable located at the left side of the headbox. If a right side cable extrusion is required, please request when ordering.

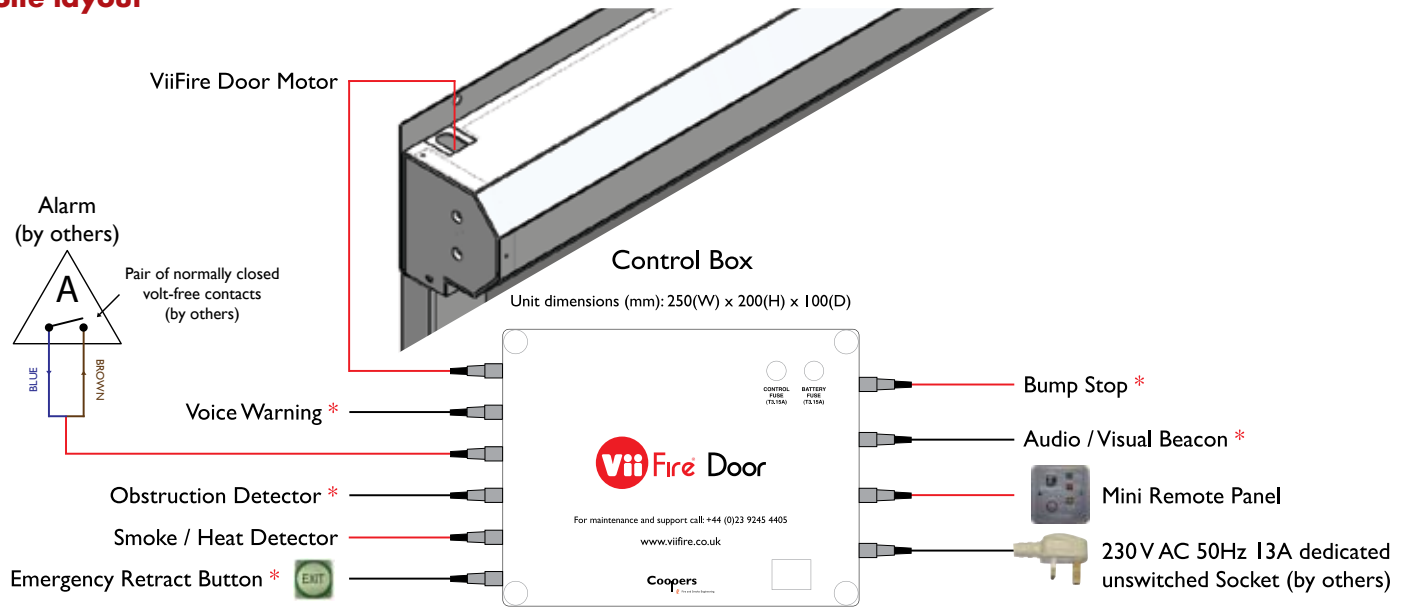
Examples

Width of Opening: 1430, Height of Opening: 1876 – Select VFD15/20 Model

Width of Opening: 847, Height of Opening: 2206 – Select VFD9/23 Model

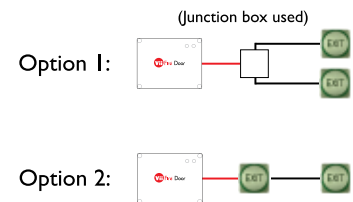


Site layout



* Optional Accessory

Emergency Retract Wiring Options :-



O & M test procedure

	Mini remote panel	Alarm green light	Mains red light	Battery yellow light	Beacon / voice warning unit**	Curtain position
Normal	Key at 'auto'	On	OK (light off)	OK (light off)	Off	Retracted
To simulate alarm	Key at 'test'	Flashing	OK (light off)	OK (light off)	On	Deploys
Emergency retract button pressed**	Key at 'test'	Flashing	OK (light off)	OK (light off)	Off (on ascent) On (on descent)	Retracts, holds for 10 seconds, then deploys again
Reset (i.e. Normal)	Key at 'auto'	On	OK (light off)	OK (light off)	Off	Retracts
Mains fail (disconnect mains plug to test)	Key at 'auto'	On	Flashes (buzzer sounds)	OK (light off)	Off	Retracted (30 minute delay before deployment)
If alarm activated	Key at 'auto'	Off	Off	Off	On	Deploys immediately (gravity fail safe)
Emergency retract button pressed** (after deployment)	Key at 'auto'	Off	Off	Off	Off (on ascent) On (on descent)	Retracts, holds for 10 seconds, then deploys
Reset (i.e. Power and alarm normal)	Key at 'auto'	On	OK (light off)	OK (light off)	Off	Retracts automatically
Poor battery condition	Key at 'auto'	On	OK (light off)	On Call service*	Off	Retracted
Shutdown battery condition	Key at 'auto'	On	OK (light off)	Flashing Call service*	Off	Deploys (gravity fail safe)

*Refer to 'Fault finding chart' in the O & M Manual

** If fitted

Technical Specification

Mechanical

Headbox:	Mild Steel 18 swg (1.2mm)
Backplate:	Mild Steel 18 swg (1.2mm)
End Plates:	Mild Steel 14 swg (2.0mm)
Side Guides:	Mild Steel 14 swg (2.0mm)
Bottom Bar:	Mild Steel 14 swg (2.0mm)
Painting:	Polyester Powder Coated RAL 9010 (other finishes on request)
Curtain:	Coopers EFP 2/1000/SS (Smoke Seal) 610 gsm stainless steel reinforced Micronised Aluminium Heat Reflecting Woven Glass Fibre

Electrical

Motor:	24Vdc Gravity Fail Safe (GFS) (with mandatory LSF 200 fire rated cable)
Controls:	24Vdc Emergency Power Unit Plug and Play pre-wired High impact ABS 250mm (W) x 200mm (H) x 100mm (D) Electronic IntelliStall® closure system
Power requirements:	230Vac – 50Hz via IEC power inlet (110Vac available on request) 0.35A, 0.75A.
Motor fuse:	3.15A anti-surge (T3.15A)
Battery fuse:	3.15A anti-surge (T3.15A)
Max output:	27.3Vdc 2A (2.3A cut-off / motor stop)
Batteries:	2 no. 12V, 1.2Ahr Sealed Lead Acid in series
Alarm:	Pair of normally closed volt-free contacts (by others) Smoke Detector or Heat Detector, Test key-switch
Side sockets:	Motor Detector (Heat or Smoke) Voice Warning Light Warning Bump Stop Obstruction Beam Emergency Retract Mini Remote Panel IEC Mains In

Mini Remote Panel:

The MRP is supplied to fit either a surface mount box OR a flush box by others (13A socket depth)

Alarm Status LED.	Reflects alarm status
Green On	Alarm Ok
Green Flashing	Alarm Activated
Red Off	Mains Ok
Red Flashing	Mains Failure (Buzzer Sounds)
Yellow Off	Battery Ok
Yellow On	Low Battery
Yellow Flashing	Curtain Descent Imminent
Dimensions	86mm (W) x 86mm (H)

Emergency retract:

If required, an emergency retract button is supplied for each side of the opening.

Special features:

Automatic alarm system detection. (Alarm, Detector or both.) If both are missing, the unit signals this and enters a lock-out condition. The Key switch must be in the AUTO position to enable the system to search for the alarm system.

Accreditations

BS EN 1634-1:2000

BS 476-22-8:1987

BS PAS 121:2007

BS 7346-3:1990

BS 476-6:1989

BS 476-7:1997

BS 476-31.1:1983

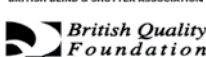
ISO 9001:2000

Meets the 'self closing without power' fire safety requirement (Approved Document B)

www.viifire.co.uk



Assessed to ISO 9001:2000
Certificate number FM22356



Coopers

Fire and Smoke Engineering

Coopers Fire Ltd, Edward House, Penner Road, Havant, Hampshire, PO9 1QZ United Kingdom.
Tel: +44(0) 23 9245 4405 Fax: +44 (0) 23 9249 2732
email: info@coopers-uk.com web: www.coopers-uk.com

The Company reserves the right to change product specifications that incorporate any improvements and upgrades to both electrical and mechanical components without prior notification

Coopers Fire Ltd have 30 years of Fire Life Safety experience which is supported by Public and Product liability of £10 million and Professional Indemnity of £5 million.