



# Oil in Water Analyzer



## Believe it

World's Best Oil in Water Analyzers

**Droplets & Solids Measurement**

**Water Composition Monitoring**

**Automatic Oil Type Selection**

**Range - 0 to 20,000ppm**

**10 years Data logging**

**Maintenance Free**

**Remote Access**

**Self Cleaning**



Distribution by:

IMA Ltd, Parkwell House, Guisley, West Yorkshire, LS20 8BH

Tel: +44 (0)1943 878877 Email: [info@ima.co.uk](mailto:info@ima.co.uk)

[www.ima.co.uk](http://www.ima.co.uk)

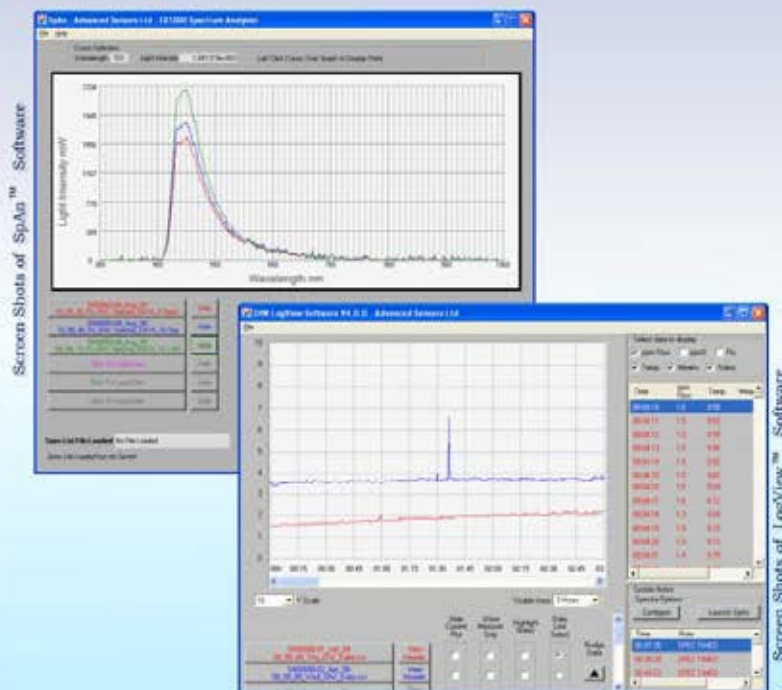
## Software Tools

The operating system is built on the globally established Windows XP Pro operating system, providing a familiar environment for instant usability.

The units data logging features capture 10 years of:

- PPM measurement
- Water sample temperature
- System diagnostic information
- Full scan optical spectrum of sample\*
- Microscopy image data\*\*

Advanced Sensors software suite includes LogView™ which has been designed to quickly and easily display the data logs with just a few clicks of the mouse. LogView™ facilitates the analysis of multiple data logs via colour coded displays for comparison.



Advanced Sensors software suite includes SpAn™ (See Above) simplifying the analysis of multiple optical spectrum simultaneously. The scans are archived as part of the data logging feature, capturing accurately the time and the reason for the spectrum scan.

All data logs can also be accessed with any spreadsheet or database application such as Microsoft's Excel, to allow evaluation with the software of your choice.

## Maintenance Free

The OIW-EX series of Oil-in-Water UV-fluorescent analyzers are designed to operate in hazardous environments and provide consistent, accurate and uninterrupted measurements. The unit uses ultrasonics to eradicate the need for routine maintenance.

The OIW-EX analyzers provide a consistent reliable measurement without requiring flow control mechanisms, mechanical mixers, chemical additives or human intervention.

## Enhanced Measurement Range - up to 20,000ppm

The OIW-EX products detect oil concentrations from low ppb to **20,000ppm**. Measured values are recorded every second in the 'Data Logs' and displayed graphically and numerically on the instrument's display.



Screen Shots of Instrument



## Networking

The Operating System and variety of communication interfaces, enables quick and efficient integration of the OIW-EX product range into any network infrastructure.

## Local Access

The OIW-EX product range will display and relay measurements simultaneously via an industry standard 4-20mA link for easy integration into existing systems. Total access and control of the instrument is provided via the Ethernet or ADSL (twisted pair) interfaces, this connectivity provides access to the instrument up to 1Km away. The level of management and control provided is unprecedented in an OIW analyzer.



## Remote Access

When OIW-EX units are networked to the internet, remote access, control and diagnostics is possible from anywhere in the world, allowing monitoring of all OIW-EX units from one location.



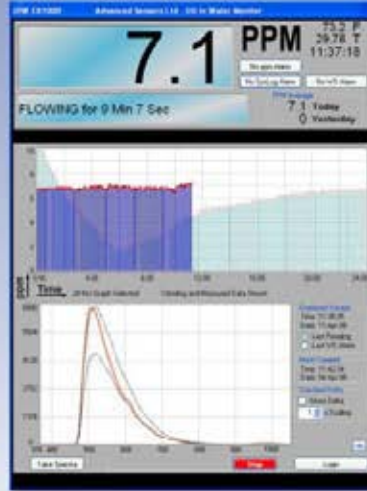
Networking provides simultaneous visibility of measurements from multiple OIW-EX units dispersed throughout the network; a specific OIW-EX unit can be selected for further investigation or control by simply selecting the unit with a click of the mouse.

# Total Detection

## Water Composition Monitoring\*

The unique inbuilt spectrometer delivers an additional layer of analysis that provides an insight into process dynamics which leads to improved process management.

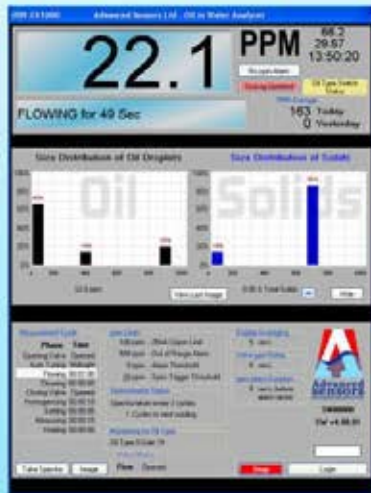
The spectrometer also monitors the water composition, should it change by a user defined percentage, an alarm can be generated to alert process engineers and chemists of the variance.



The spectrometer may also be used to monitor or measure specific substances e.g. process chemicals within the water stream.

## Automatic Oil Type Detection\*

Automatic calibration selection is another unique feature of the analyzer. The spectrometer can differentiate the signature of individual oil types and select the appropriate measurement calibration. This removes the need for human intervention should there be more than one oil type present in the water stream.




## Droplets & Solids Measurements\*\*

The video microscopy feature measures oil droplet size and distribution, also, solids (particulates) size and distribution. These are displayed graphically and numerically. The data is stored in the daily logs and the video images are stored for further analysis.

\*OIW-EX1000 and EX4000 Models Only  
\*\*OIW-EX4000 Model Only

## User Friendly

Microsoft  
**Windows** 

The simple easy-to-use interface and clear uncomplicated display facilitates simple configuration and use of the instrument. Configurations are easily selected using drop down menu bars and the current status of the measurement cycle is clearly displayed.

The flexibility of the user interface provides an unlimited variety of configuration settings, empowering the user to tailor the OIW-EX products to their specific needs.



## Technical Data

Sensitivity:	Resolution 1ppb
Range:	0-20,000ppm
Droplets Measurement:	1-200µm dia.
Solids Measurement:	1-40,000µm <sup>2</sup> area
Sample Temp.	Max 100°C
Sample Pressure	0-35bar (150bar*)
Sample Flow	0-25 l/m (1000 l/m*)
Size with Stand:	620 x 620 x 1160mm
Operating Temp.	-20°C to +50°C (higher temp.*)
Weight:	76.9kg (inc. Stand, Valve & Chamber)
Power Supply:	110V or 240V AC, 50 or 60Hz, 3A
Power:	Typically 30W (120W Max)
Data Output:	4-20mA, Ethernet, ADSL (HART*)
Alarms:	On-screen & External Relay (SMS Text*)
Response:	Real Time, On Line
Data Logging:	> 10 years, as standard
Remote Access:	Ethernet/ADSL (HART*)
Security:	Multiple Level Password Protection
Flange Connectivity:	1inch BS4504 PN16 (Other sizes*)
Maintenance:	None
Service Inspection:	12 months
SS Grade:	316L
Wetted parts Grade:	316L (Duplex and Super Duplex*)
Certification:	 II 2 G Ex d IIB T4 FM Class1 Div1 MEPC.107(49) - USCG

### \*Optional

NOTE: Purged air NOT required

*Believe it*  
World's Best Oil in Water Analyzers



Distribution by:  
IMA Ltd, Parkwell House, Otley Rd,  
Guisely, West Yorkshire, LS20 8BH  
England  
Tel: +44 (0)1943 878877  
Email: info@ima.co.uk  
Web: www.ima.co.uk

