

*Solutions for the cement industry*

**Are you paying skilled staff to climb stairs  
or to produce cement?**



*Access anytime, anywhere*

## Let us transport your workers faster for less cost!

**Alimak Hek has provided industrial lifts based on the rack & pinion drive technology to the cement industry for more than 40 years.**

In fact, we have installed over 30,000 rack & pinion solutions for different industries worldwide, including many in cement plants. We have developed extensive engineering knowledge on a wide variety of industrial applications. Industrial lifts from Alimak Hek are designed to withstand the harsh environments and abrasive conditions in cement plants, providing safe, reliable vertical access, anytime and anywhere it is needed, from silos, cyclone towers, and preheaters, to filter chambers, calciners, and mills.

### **More reliable than traction lifts**

Easy to install and maintain, the rack & pinion lift has proven to be far more reliable than traditional traction lifts. And compared to accessing heights via stair towers, rack & pinion lifts significantly increase efficiency, productivity, and safety.

Rack & pinion lifts for permanent installations from Alimak Hek are ideal for accessing cement plant structures for inspections, emissions monitoring, maintenance, and periodic overhauls. They also effectively reduce the risk of falls from height, eliminate exertion from climbing, and provide the ability to quickly transport injured personal from any height.

Alimak Hek offers a wide and versatile range of vertical access solutions also for temporary use whether for retrofitting, upgrades or larger refurbishment programs in the plant.

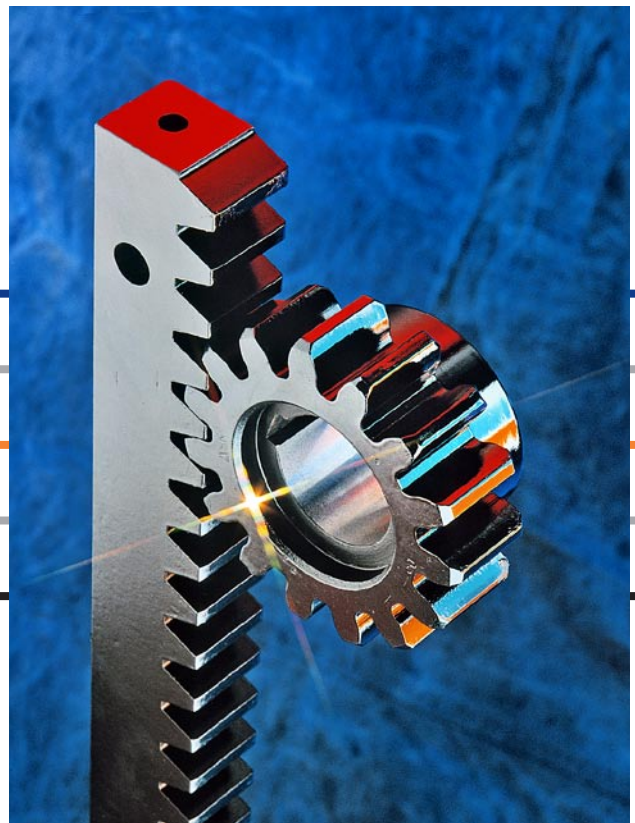
### **Plant Construction**

For temporary construction work at a cement plant, Alimak Hek can also offer a wide range of construction hoists, work platforms, and transport platforms. We also manufacture the Alimak Scando range of temporary construction hoists for transporting passengers and materials, as well as Hek mast climbing transport and work platforms. Offering the optimum transport solution for cement plant construction projects, including chimney and slipform work, they provide secure, efficient vertical access for men and materials.

### **Rack & pinion pioneers**

In 1962 we pioneered the rack & pinion drive system that, within a few years, helped establish us as the world's leading specialist in this technology. The rack & pinion construction hoist proved to be simple, reliable and cost-effective compared to the wire rope drive or other revolutionized passenger and material transportation options on construction sites.

The rack & pinion concept has since been developed and refined, subsequently opening up new markets in the industrial lift sector. Today our activities are concentrated on the design, manufacture and distribution of construction hoists, permanent industrial lifts, and mast climbing work platforms and transport platforms, all based on the rack & pinion principle.





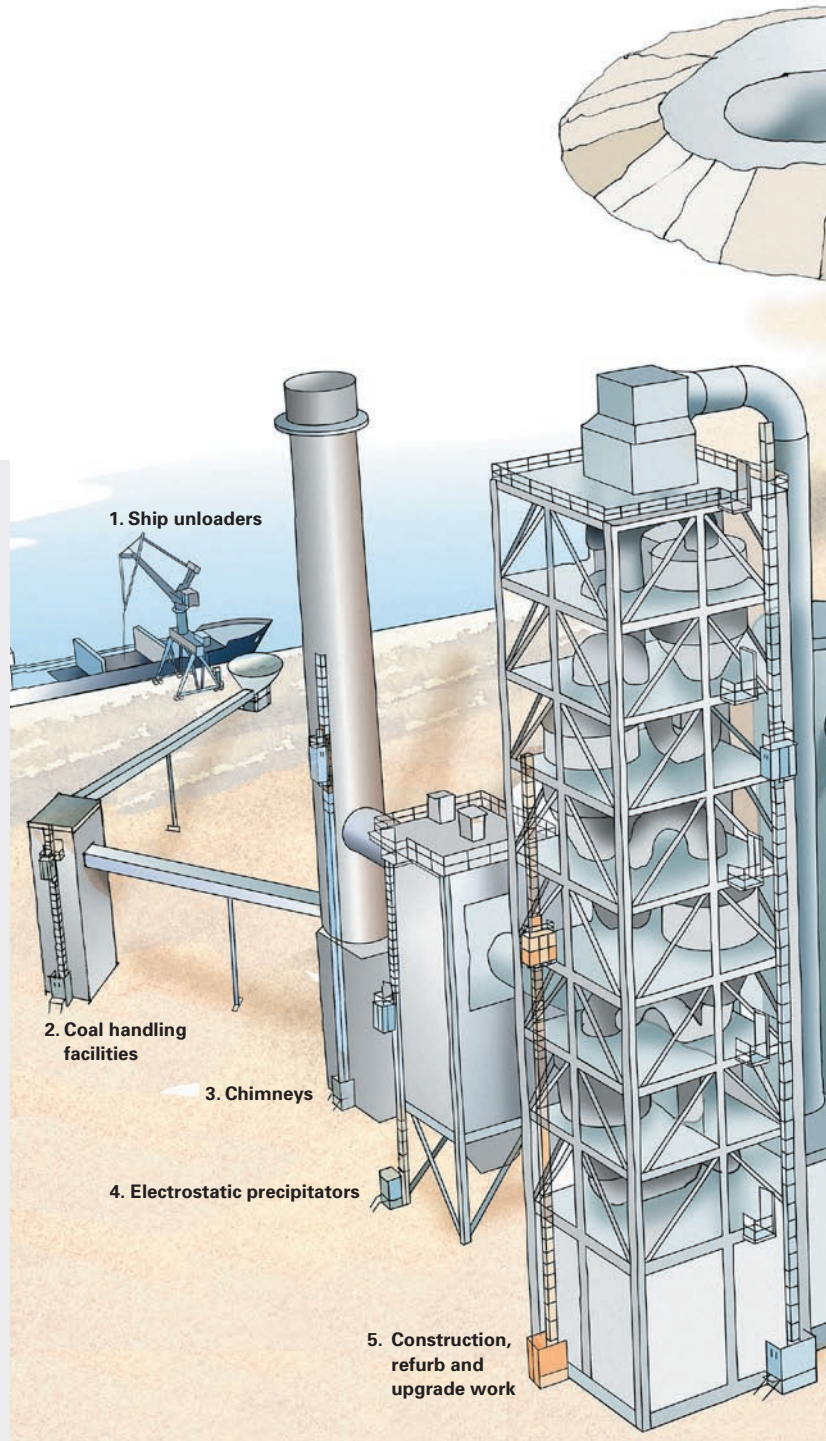
## Flexible for any type of vertical transport service at a plant

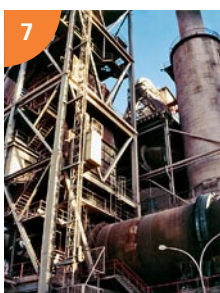
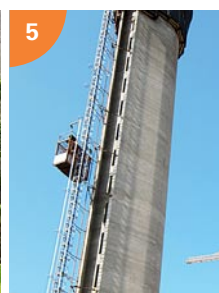
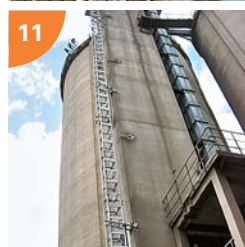
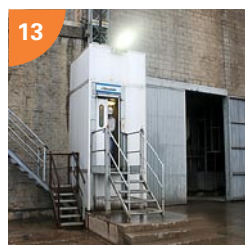
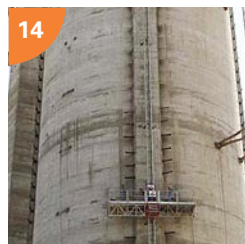
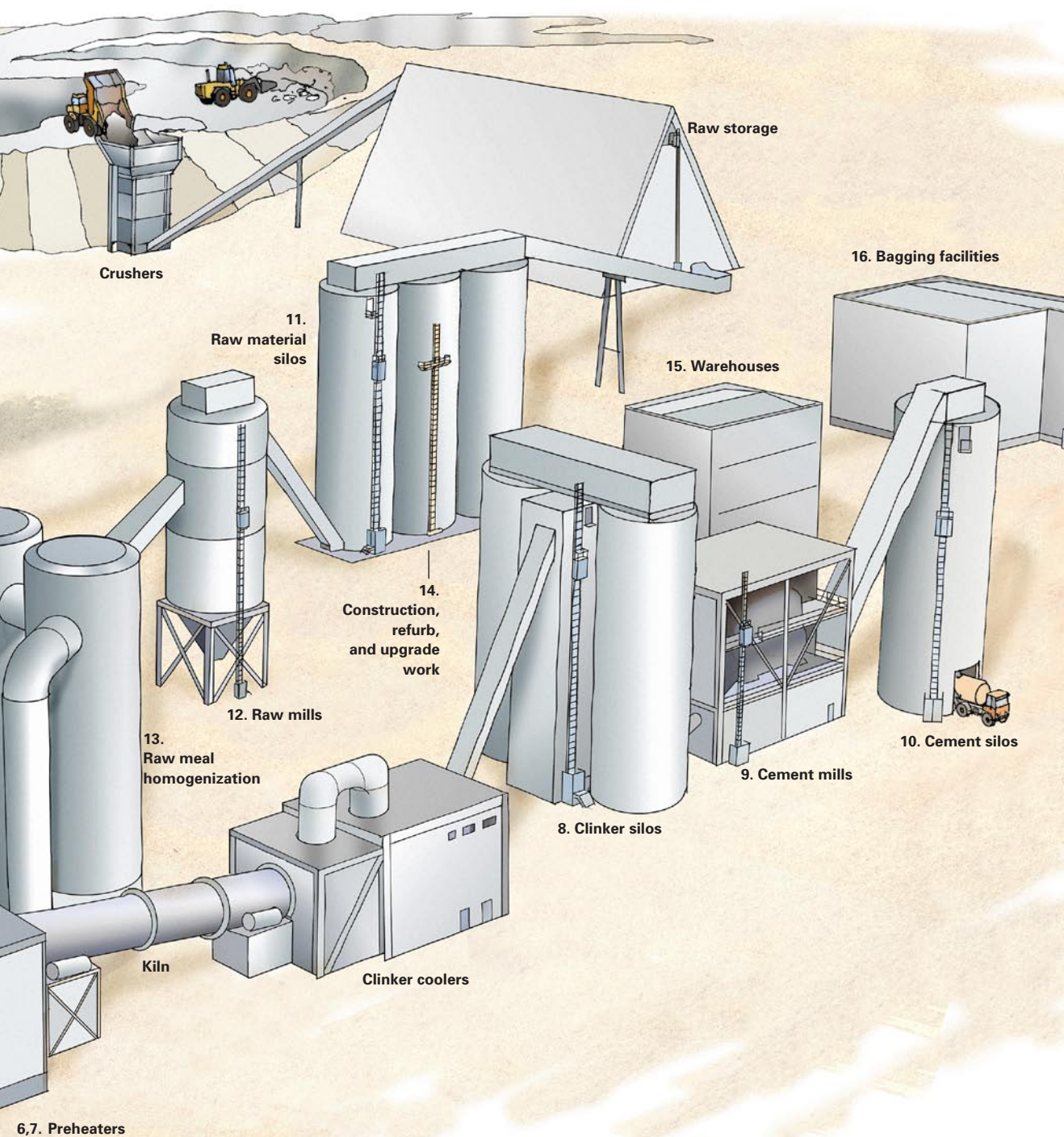
A cement plant is a tough place for any piece of machinery to operate in, and the lift is no exception. Our lifts operate at peak performance within dusty environments. We have a working solution for any transport requirement within the plant.

Silos, cyclone towers, wet scrubbers, preheaters, filter chambers, bagging facilities, stack calciners and mills are typical applications for Alimak lifts. Lift capacities may vary depending on the size and weight of the goods to be transported – ranging from maintenance personnel only to heavy replacement parts and sacks.

### Rack and pinion simply because:

- Made for tough environments
- No shaft is required
- Indoor or outdoor installation
- Small footprint
- Low space required above the lift at top landing
- No machine room is required
- No concrete pit is required
- Small interference to buildings or structures
- Easy to retrofit to existing buildings or structures
- Can be installed on inclined and curved surfaces
- No lifting height limits
- High capacities and speed
- Accurate leveling at landings
- Can decline based on gravity control in instances of a power outage
- Durable and easy to maintain





## Low investment costs with high productive results

Many field studies and research reports have shown that the installation and usage of Alimak rack and pinion lifts are extremely profitable. The Alimak lift is also proven to be highly efficient at very low lifting heights; particularly when environmental factors are taken into account.

Other reasons to choose an Alimak lift:

- Atomization means that less people are working in the process and that production and output become more sensitive to disturbances.
- Loss of production time at unplanned stops in the process, as well as during planned maintenance stops, is becoming more and more expensive.
- Does not require a lift shaft and is economical to install at plants without lifts.
- Economical at very low lifting heights.
- Flexible and easy to install in challenging areas where access service is needed most.
- Improves upon increased labour and engineering time costs.
- Addresses increased environmental demands.
- Meets increased health safety and security demands.

### **Complete life-cycle support**

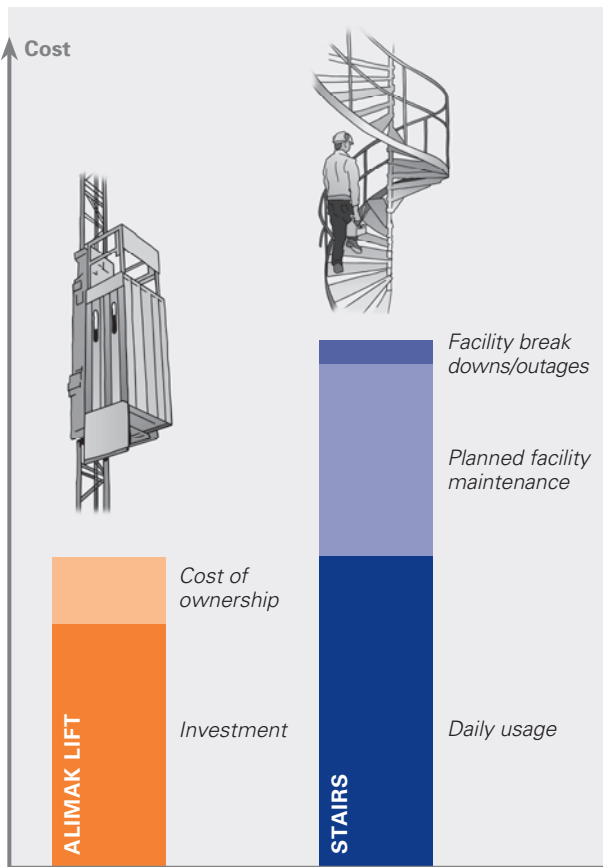
Owners of Alimak rack and pinion lifts have learned that they can keep uptime maximised and critical operations running efficiently even in the most demanding applications. Quite commonly lifts have been in service for very long periods (15 plus years) even in excessively harsh and unfriendly environments, have they been properly supported and maintained.

Alimak Hek offers a variety of products and services designed to improve the efficiency and extend the lifetime of our machines through the Alimak Hek companies and the global distributor network. We provide customer support programs, regular maintenance inspections, globe-spanning spare parts operations, and comprehensive commercial, technical, and application engineering training for everyone using and assembling our products.



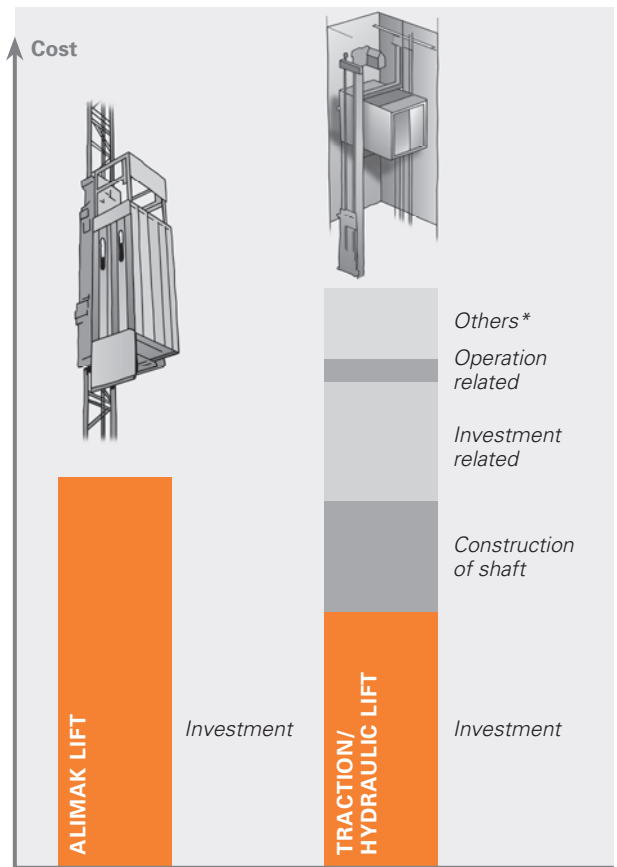
**Alimak lifts vs. stairs**

The example below displays the usage of an Alimak lift on a project in comparison to using a staircase only – results show cost savings of more than 40% from the investment and use of an Alimak lift.



**Alimak lifts vs. conventional lifts**

The example below displays the usage of an Alimak lift on a project in comparison to using a conventional lift solution – results show cost savings of more than 30% from the investment and use of the Alimak lift and system.



\*e.g. emergency evacuation system

*The Alimak Hek Group is the world's leading supplier of mast climbing equipment and added value services for both temporary and permanent installations, providing the most cost efficient, reliable, and flexible vertical access solutions for people and materials in the construction and general industry.*

*The Alimak Hek Group is owned by Triton, an independent European private equity investor, focusing on investing in companies with leading market positions in attractive industry niches. Triton has offices in Sweden, Germany and the UK.*