



YEOMAN **SHIELD**

WALL & DOOR PROTECTION

making business a pleasure *for over 55 years*



Yeoman Shield 45mm Oval Handrail

Yeoman Shield 45mm Oval Handrail

The new Yeoman Shield 45mm Oval Handrail meets the brief perfectly for installation in corridors and communal areas where added support for service users is required. It can also be installed on sloping ramps and stairways if required.

Manufactured from PVCu the rail is warm to the touch and easy to clean. This hygienic system has an Aluminium core and stainless steel underslung brackets giving the required 65mm distance between the rail and wall to ensure a firm and comfortable grip for the user.

The Oval Handrail is available in various colours with an accompanying range of accessories to ensure a durable and solid fit to the substrate within the environment the rail is intended for. The use of contrasting accessories can help service users who have impaired vision or have dementia.

Suitable for:

Corridors, ramps, interior stairs and entrances in public buildings, education, healthcare, leisure, and retail environments.

Composition:

Rail - Extruded PVCu Sleeve over extruded Aluminium core

External & Internal Corners - injection moulded.

Wall Return Stop Ends - injection moulded.

Underslung Fixing Bracket - Type 304 Stainless Steel

Guidance for when installing handrails.

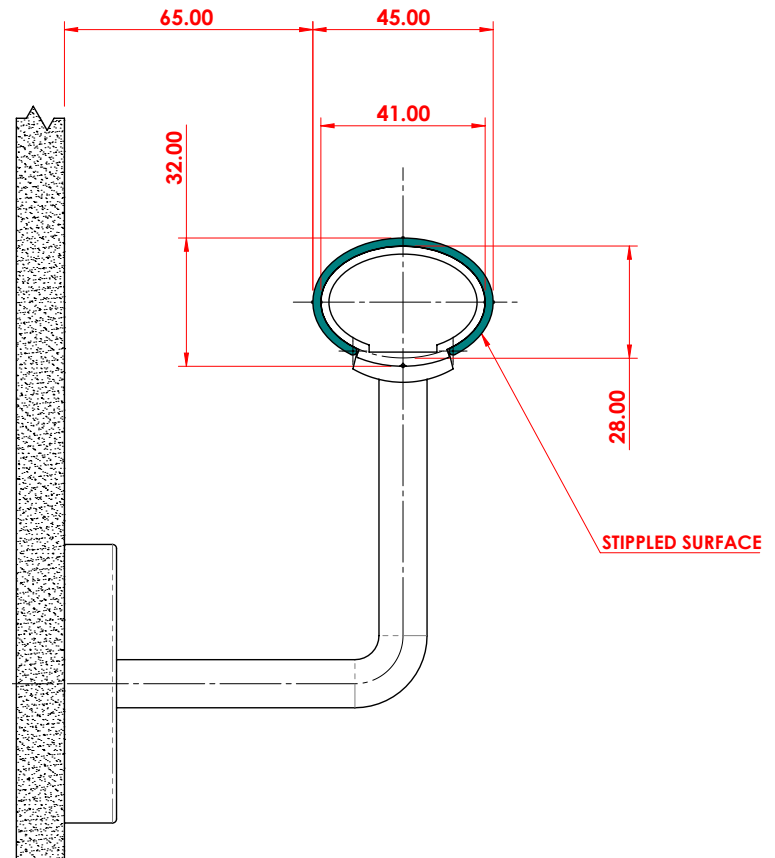
Install height: Between 900 – 1000mm from floor (or pitch when installing on stairways).

Grip: Between 32 and 50mm with 50 -75mm gap between wall and rail.

Colour Contrast: Sufficiently different from wall colour to assist dementia and visually impaired service users.

Material: Warm to touch and easy to clean.

Accessories: Wall return accessories to prevent snagging of clothes and bags.



Easy to clean with everyday cleaning products



Rail & Accessories
Light Grey, Mid Grey, Dark Grey, Graphite, Royal Blue, White,
Accessories also available in Black

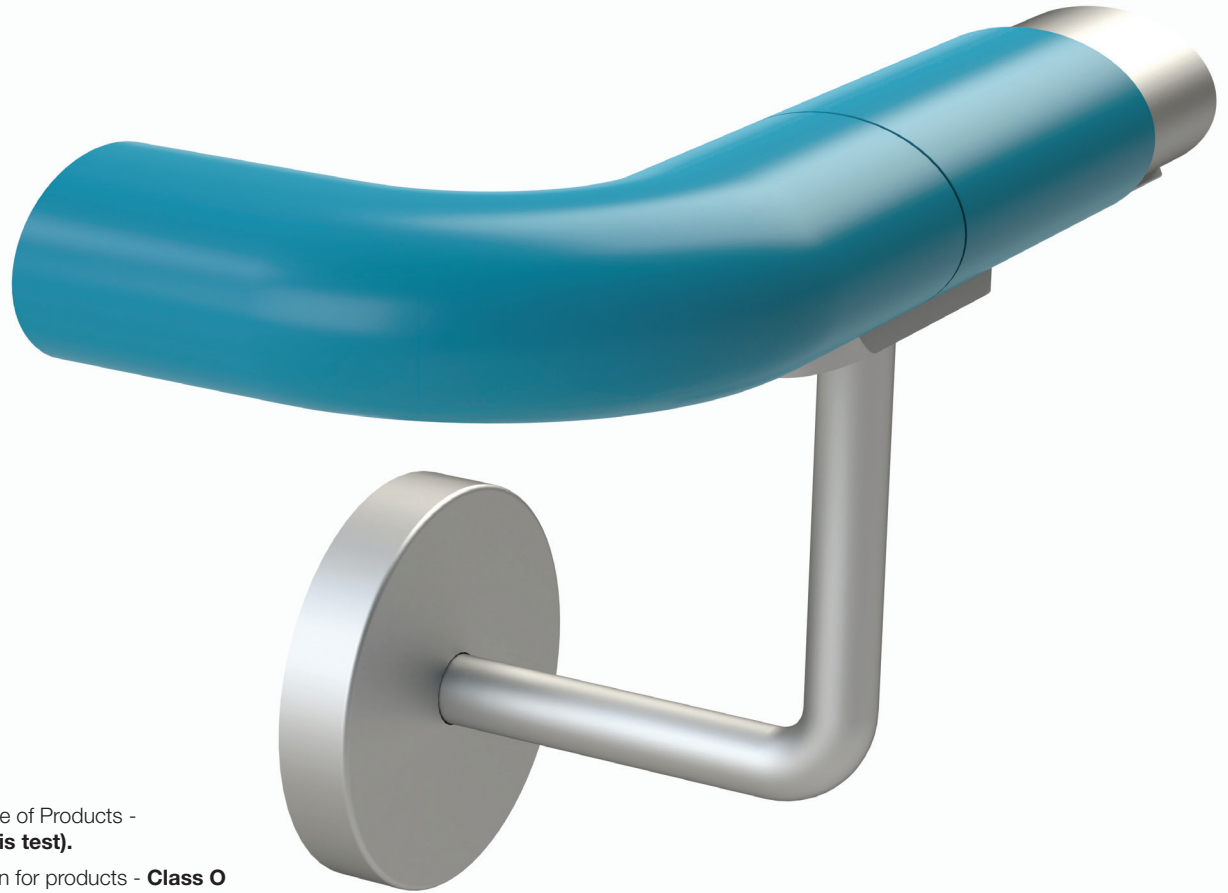
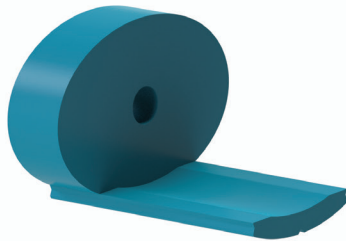


Available on 7 to 10-day delivery



HBN 00-04 – handrail guidance,
HBN 00-09 – infection control,

Dimensions	Projection	Length/Height	Width	Depth	Thickness
Oval Rail	-	3.5M	45mm Dia.	32mm	2mm
Aluminium Core	-	3.5M	41mm	28mm	3mm
External/ Internal Corner	-	-	108 x 108mm	-	2mm
Wall Return	-	-	108 x 108mm	-	2mm
Underslung Fixing Bracket	-	-	-	-	-



Fixing Options:

Fixed to wall substrate via Stainless steel underslung fixing brackets c/w Cover Plate

Scan to view fixing instruction video.



Fire Performance:

Textured Extruded Protection Products – **B, s2, d0**

BS EN 13823: 2010 + A1: 2014.

BS EN ISO 11925 - 2: 2010.

BS EN 13501 - 1: 2007 + A1: 2009.

BS 476: Part 7: 1997 - The Surface Spread of Flame of Products - **Class 1Y (Class 1 is the best classification in this test).**

BS 476: Part 6: 1989 + A1: 2009. - Fire Propagation for products - **Class O**
- As defined in the latest Building Regulations, Approved Document B (Fire Safety).

Wall Structure*	Screw	Plug
Plasterboard	Appropriate length 5mm machine screw	5mm Rubber Rawlnut
Brickwork, Breeze Blockwork, Concrete	Appropriate length No. 10 woodscrew	No. 10 Plastic plug
Lightweight Blockwork e.g. Thermalite, Siporex	Appropriate length No. 10 woodscrew	Fischer S8 Plastic plug
Steel	Self-tapper	-

* Consideration needs to be taken on wall structure for secure fitting. For single skin plaster board an internal timber pattress is advised.

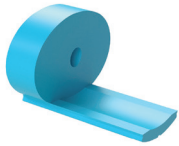
Accessories



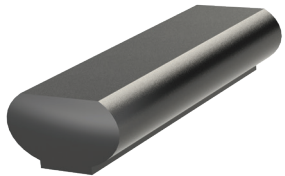
90° Internal/External Corner



135° Internal/External Corner



Wall Return Stop End

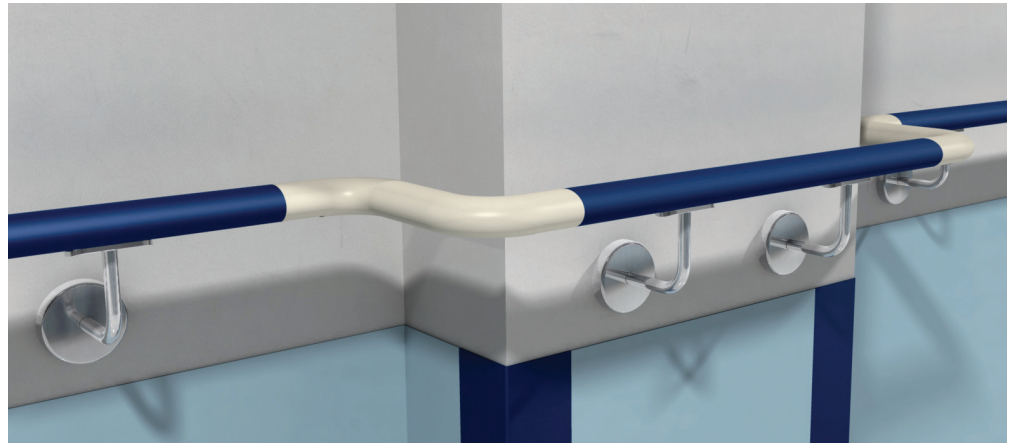


Joint Block



Underslung Fixing Bracket
c/w Cover Plate

- ✓ Fire Tested
- ✓ Supply Only Nationwide Delivery
- ✓ Held in Stock
- delivery 7/10 working days
- ✓ Nationwide Installation Service
- ✓ Free Samples
- ✓ Free Site Measures





YEOMAN
SHIELD

WALL & DOOR PROTECTION

making business a pleasure *for over 55 years*

For more information please call **0113 279 5854**
or email **info@yeomanshield.com**

www.yeomanshield.com