



Yeoman Shield Contour Hand/Crash Rail

# Yeoman Shield Contour Hand/Crash Rail

The new Contour Hand/Crash Rail from Yeoman Shield serves both as a functional handrail and robust crash rail all in one stylish design.

The perfectly shaped upper handrail provides ideal support for those in need whilst the shaped bottom section fends off impact damage caused by everyday traffic such as wheelchairs, trolleys, beds and other wheeled equipment as well people brushing against it.

Thoughtfully designed for ease of installation and strength, Contour Hand/Crash Rail is a cost effective solution for busy circulation corridors and in heavy trafficked areas such as lift lobbies etc can be combined with other Yeoman Shield products to provide total surface protection for your building.

As the top handrail section and bottom crash rail section are independent its easy to mix and match colours from the range to design inspiring schemes to help with wayfinding and DDA but also to compliment modern interior design schemes. Accessories also come in two parts to help create seamless designs or contrasting effects to enhance the environment.

### Suitable for:

Busy circulation corridors and walkways in healthcare, leisure, commercial and educational settings.

### Compliant with HBN 00-04 Circulation and Communication spaces

### Composition:

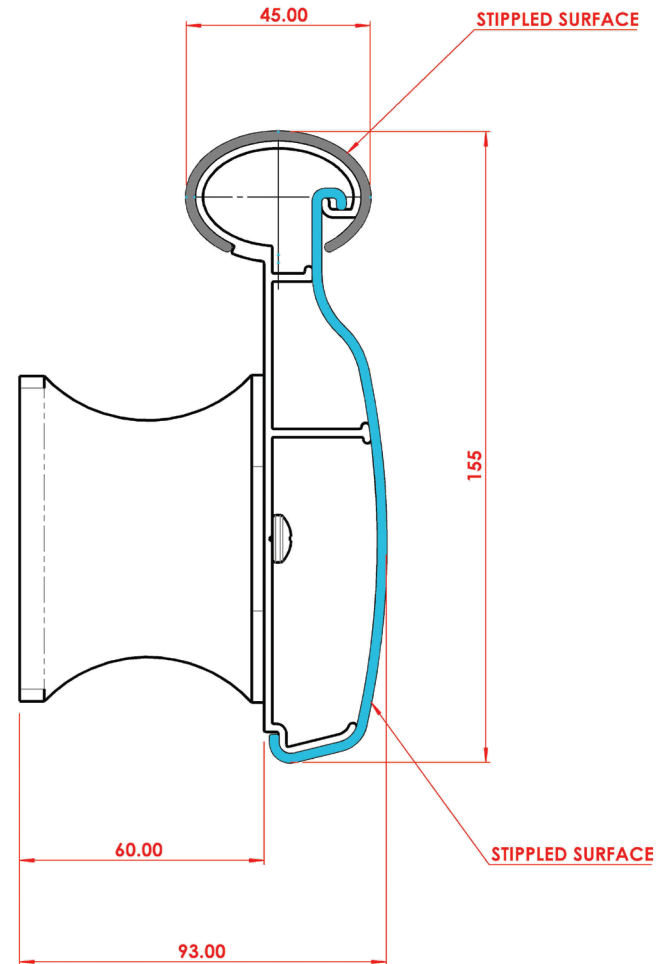
Rail - Extruded PVCu

Core - Extruded Aluminium

Accessories - Injection Moulded ABS

Spacer Brackets

- Injection Moulded PVCu



Easy to clean with everyday cleaning products



Colours available for the rail and accessories are Light Grey, Mid Grey, Dark Grey, Graphite, Royal Blue, White. Other colours available subject to quantity.

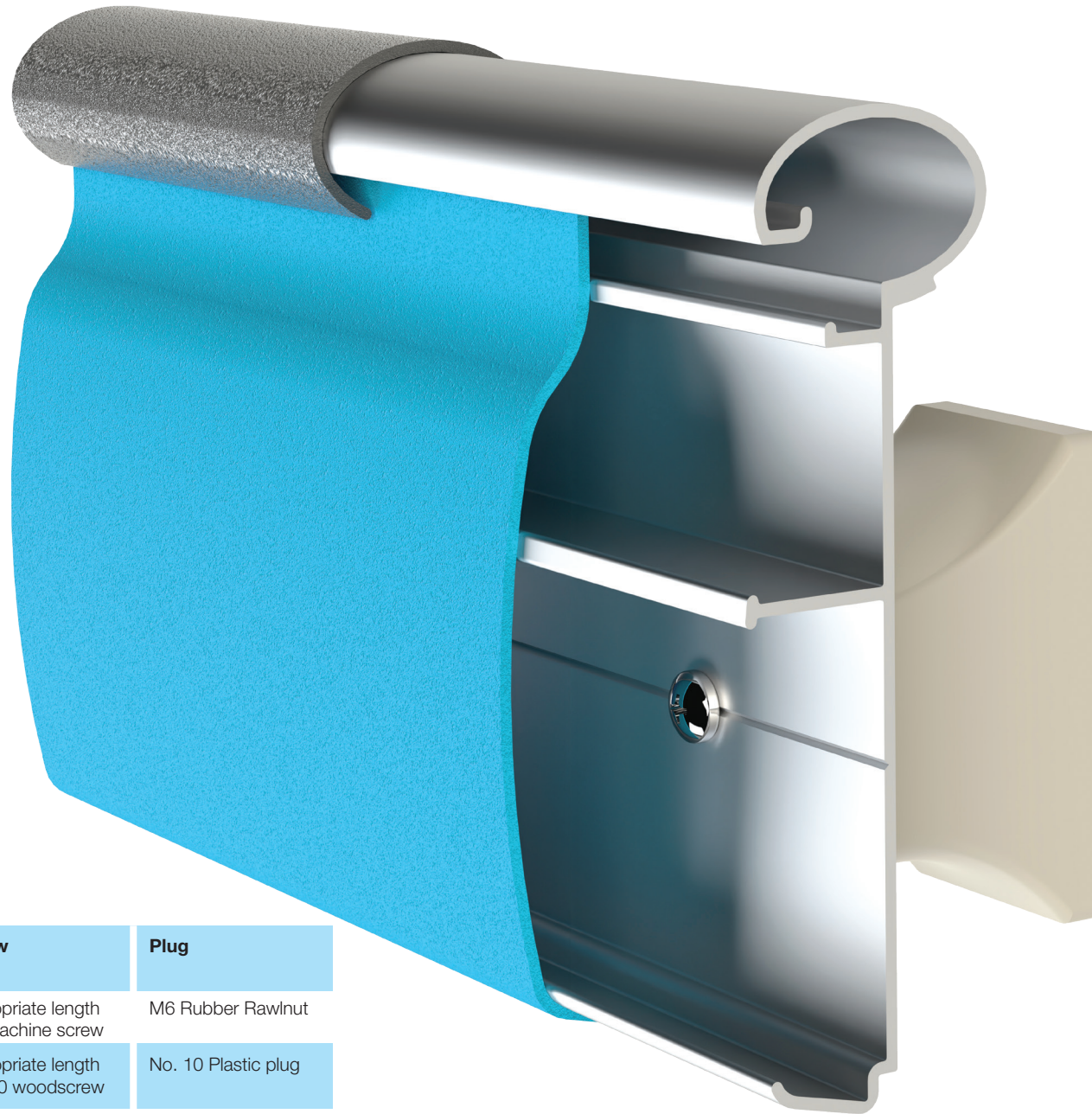
Accessories are also available in Black.



Available on 4 to 5 day delivery

Dimensions	Projection	Length/Height	Width
Contour Rail*	45 mm	3500 mm	155 mm
Aluminium Core	41 mm	3500 mm	155 mm
Accessories	45 mm	105 x 105 mm	155 mm
PVCu Spacer Bracket	60 mm	80 mm	45 mm

\*Overall dimensions



**Fire Performance:**

Textured Extruded Protection Products – **B, s2, d0**

**BS EN 13823: 2010 + A1: 2014.**

**BS EN ISO 11925 - 2: 2010.**

**BS EN 13501 - 1: 2007 + A1: 2009.**

**BS 476: Part 7: 1997**

- The Surface Spread of Flame of Products
- **Class 1Y (Class 1 is the best classification in this test).**

**BS 476: Part 6: 1989 + A1: 2009.**

- Fire Propagation for products - **Class O**
- As defined in the latest Building Regulations, Approved Document B (Fire Safety).

**Fixing Options:**

Scan to view fixing instruction video.



Wall Structure	Screw	Plug
Plasterboard	Appropriate length M6 machine screw	M6 Rubber Rawlnut
Brickwork, Breeze Blockwork, Concrete	Appropriate length No. 10 woodscrew	No. 10 Plastic plug
Lightweight Blockwork e.g. Thermalite, Siporex	Appropriate length No. 10 woodscrew	Fischer S8 Plastic plug
Steel	Self-tapper	-

- ✓ Fire Tested
- ✓ Installation Service\*
- ✓ Supply Only Nationwide Delivery
- ✓ Stock availability - 4 to 5 working days
- ✓ Free Samples
- ✓ Free Site Measures

\*Inhouse installation service

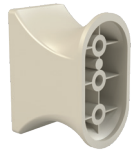
Fitting Accessories



Wall Return



Wall Fixing Plate



Spacer Bracket



90° External Angle



90° Internal Angle



135° External Angle



135° Internal Angle



For more information  
please call **0113 279 5854**  
or email **info@yeomanshield.com**

**www.yeomanshield.com**

