



Yeoman Shield Ellipse Protection Rail

Yeoman Shield Ellipse Protection Rail

The curved contours of the new Yeoman Shield Ellipse Protection Rail are not only aesthetically pleasing but serve the purpose of protecting interior walls from impact damage.

This easy to clean PVCu profiled rail is the perfect option when it comes to maintaining high hygiene standards which is sustained throughout the product by way of an Aluminium core.

The Aluminium core, though lightweight, offers strengthened resilience, fending off impact damage which can be caused from wheeled vehicles, equipment and passers-by.

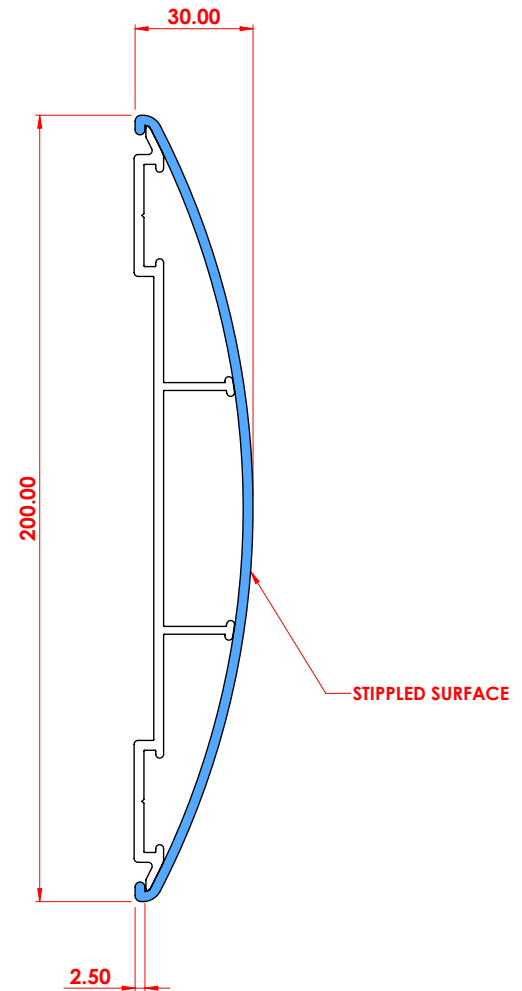
The 200 mm width provides ample coverage to spare the wall above and below the rail from marking, denting and scratching.

Suitable for:

Interior corridors, entrance ways, storage areas, back of house, plant rooms, waste and sterilisation rooms, classrooms, sports facilities, hospital wards, theatres, waiting areas, leisure and retail facilities.

Composition:

- Rail - Extruded PVCu
- Core - Extruded Aluminium
- Stop End – Injection moulded (2 No. Stop Ends form an internal corner)
- External Corners - Injection moulded



Easy to clean with everyday cleaning products



Rail & Accessories
Light Grey, Mid Grey, Dark Grey, Graphite, Royal Blue, White, Other colours available from Yeoman Shield range, subject to quantity.

Black - accessories only



Available on 7 to 10-day delivery

Dimensions	Projection	Length/Height	Width
Ellipse Rail	30mm	2500 mm	200 mm
Aluminium Core	30 mm	3500 mm	200 mm
External Corner	30 mm	200 mm	45 x 45 mm
Stop End (2 x Stop Ends = Internal Corner)	30 mm	200 mm	45 mm

Fire Performance:

Textured Extruded Protection Products – **B, s2, d0**

BS EN 13823: 2010 + A1: 2014.

BS EN ISO 11925 - 2: 2010.

BS EN 13501 - 1: 2007 + A1: 2009.

BS 476: Part 7: 1997 - The Surface Spread of Flame of Products -
Class 1Y (Class 1 is the best classification in this test).

BS 476: Part 6: 1989 + A1: 2009. - Fire Propagation for products - **Class O**
- As defined in the latest Building Regulations, Approved Document B (Fire Safety).

Considerations when installing Protection Rails.

Installation height:

Though usual guide is to fit at between 800 and 1000 mm it is best to ensure the Ellipse Protection rail is at a height that protects from most impact eventualities. A double run of rail can be the best solution.

Accessories:

Think about using contrasting colours for stop ends and corners for DDA concerns.

Materials: Easy to clean

Fixing Options:

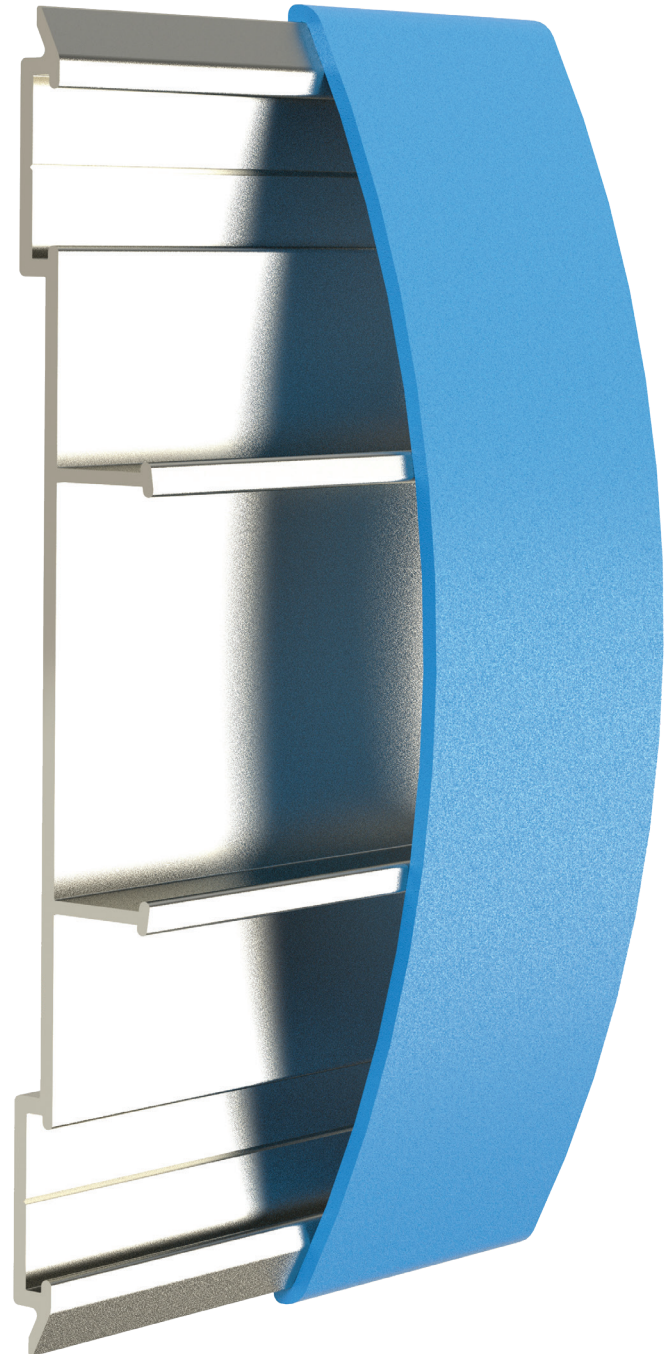
Fixed to wall screwed through the Aluminium core with PVCu cover clipped over.

Fixing Options:

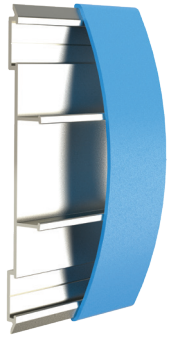
Scan to view fixing instruction video.



Wall Structure	Screw	Plug
Plasterboard	Appropriate length 5mm machine screw	5mm Rubber Rawlnut
Brickwork, Breeze Blockwork, Concrete	Appropriate length No. 10 woodscrew	No. 10 Plastic plug
Lightweight Blockwork e.g. Thermalite, Siporex	Appropriate length No. 10 woodscrew	Fischer S8 Plastic plug
Steel	Self-tapper	-



Fitting Accessories



Aluminium Core



Internal Corner



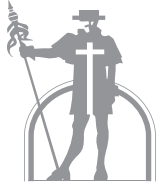
External Corner



Stop End



- ✓ Fire Tested
- ✓ Supply Only Nationwide Delivery
- ✓ Held in Stock
- delivery 7/10 working days
- ✓ Installation Service
- ✓ Free Samples
- ✓ Free Site Measures



YEOMAN SHIELD

WALL & DOOR PROTECTION

making business a pleasure for over 55 years

For more information
please call **0113 279 5854**
or email **info@yeomanshield.com**

www.yeomanshield.com

